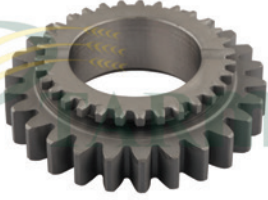




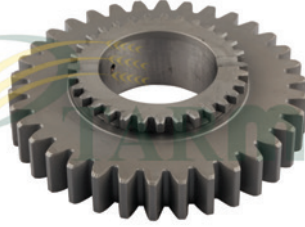
JD-0001



630-955

H75179
2-4 VİTES DİŞLİSİ
(Z-26 / 31)

JD-0002



630-955

H75180
1-3 VİTES DİŞLİSİ
(Z-34 / 31)

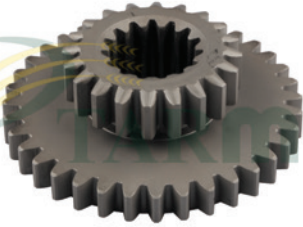
JD-0003



630-955

H82165
SENKROMEÇ ÇEMBER DİŞLİ
(Z-31)

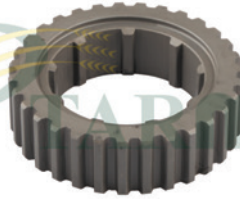
JD-0004



630-955

H32057
GERİ VİTES DİŞLİSİ
(Z-36 / 20 / 15)

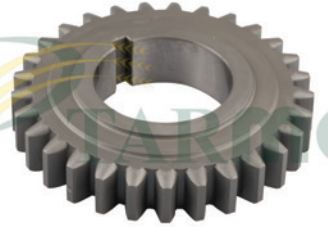
JD-0005



630-955

R26255
ORTA GEZİCİ İÇ SENKROMEÇ DİŞLİ
(Z-31 / 9)

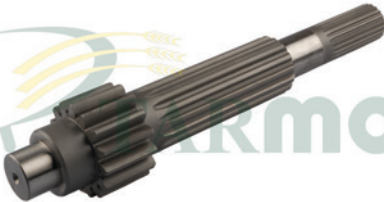
JD-0006



630-955

H33491
TEK KAMALI DİŞLİ
(Z-29)

JD-0007



630-955

H36519
KAMALI MİL
(Z-21 / 15 / 15) - (UZUN)

JD-0008



630-955

H64031
KAMALI MİL
(Z-9 / 13) - (KISA)

JD-0009



630-955

H33495
GRUP DİŞLİSİ PRİZDİREK
(Z-13 / 23 / 15 / 10) - (KISA)

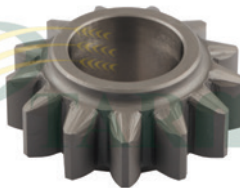
JD-0010



955 SÜPER

Z10928
GRUP DİŞLİSİ PRİZDİREK
(Z-13 / 23 / 15 / 10) - (UZUN)

JD-0011



630-955

Z10928
GRUP PRİZDİREK TAMİR DİŞLİSİ
(Z-13)

JD-0012



630-955

Z11298
VİTES AYI - (ORİJİNAL TİP)
(ÇENELİ) - (BÜYÜK)



TARMO A.Ş.

JOHN DEERE

www.tarmo.com.tr

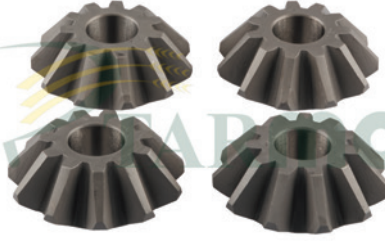
JD-0013



630-955

Z11299-H11479
VİTES AYI
(KÜÇÜK)

JD-0014



630-955

L29227
İSTAVROZ DİŞLİSİ
(KONİK)

JD-0015



630-955

L29226
İSTAVROZ MİLİ

JD-0016



630-955

AZ23520
DİFERANSİYEL CER DİŞLİSİ
(DÖVME)

JD-0017



1174-1450

Z11013-AH66305
CER DİŞLİSİ
(Z-29 / 85) - (YEKPARE) - (DÖVME)

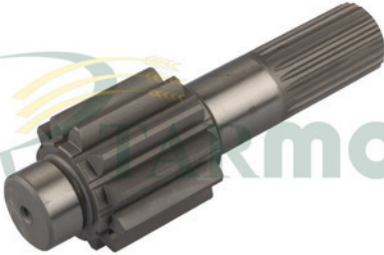
JD-0018



630-955

AZ23265
CER DİŞLİSİ
(Z-25 / 85) - (YEKPARE) - (DÖVME)

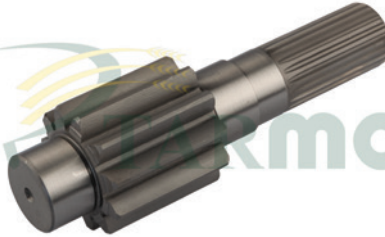
JD-0019



630

Z10944-H28090
PİNYON DİŞLİ CER KARŞILIĞI
(Z-21 / 11)

JD-0020



955

H65260
PİNYON DİŞLİ CER KARŞILIĞI
(Z-21 / 11)

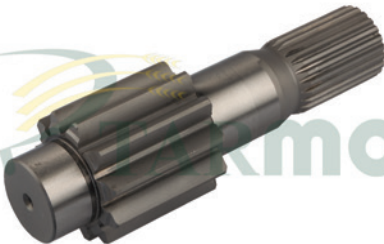
JD-0021



955 SÜPER

Z11315
PİNYON DİŞLİ CER KARŞILIĞI
(Z-23 / 11)

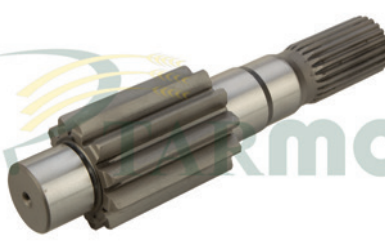
JD-0022



1170-1450-1550

CQ58485-CQ05043
PİNYON DİŞLİ CER KARŞILIĞI
(Z-23 / 11)

JD-0023



1000-2000 SERİSİ

Z11320
PİNYON DİŞLİ CER KARŞILIĞI
(Z-23 / 11)

JD-0024

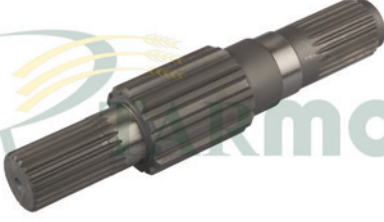


955

Z10798
CER KOVANI
(ÇELİK)



JD-0025



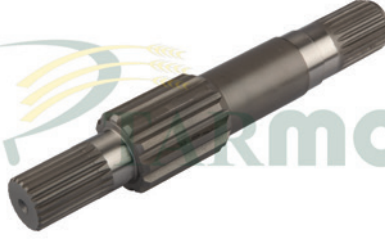
630-955

Z27545

DİFERANSİYEL AKSI

(Z-23 / 12 / 21) - (25cm) - (SAĞ)

JD-0026



630-955

Z27546

DİFERANSİYEL AKSI

(Z-23 / 12 / 21) - (29cm) - (SOL)

JD-0027



955-955 SÜPER

Z37946

DİFERANSİYEL AKSI

(Z-23 / 12 / 23) - (UZUN) - (SAĞ)

JD-0028



955-955 SÜPER

Z37945

DİFERANSİYEL AKSI

(Z-23 / 12 / 23) - (KISA) - (SOL)

JD-0029



1174

Z45036

DİFERANSİYEL AKSI

(SAĞ - SOL)

JD-0030



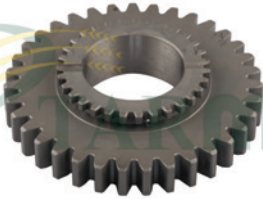
1450

H136017

DİFERANSİYEL AKSI

(SAĞ - SOL)

JD-0031



975H-985H-1075H

Z31530

1 VE 3.VİTES DİŞLİSİ

JD-0032



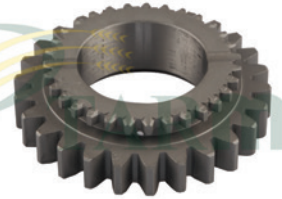
975H-985H-1075H

H62815

1 VE GERİ VİTES DİŞLİSİ

(Z-35 / 20 / 15)

JD-0033

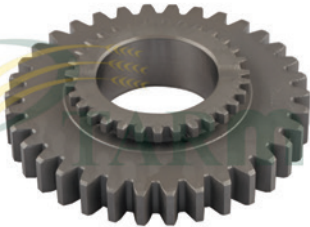


1174

Z11551

2-4 VİTES DİŞLİSİ

JD-0034



1174

Z11552

1-3 VİTES DİŞLİSİ

JD-0035

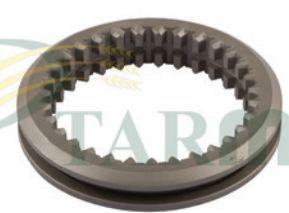


1174

Z11557

1 VE GERİ VİTES DİŞLİSİ

JD-0036



1174

Z44614

SENKROMEÇ ÇEMBER DİŞLİ



TARMO A.Ş.

JOHN DEERE

www.tarmo.com.tr

JD-0037



1174

Z46410
SENKROMEÇ ORTA GEZİCİ

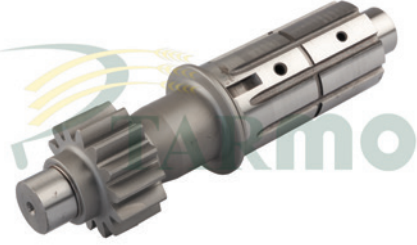
JD-0038



1174

Z11788
KAMALI MİL
(UZUN)

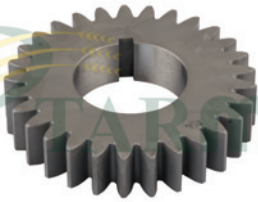
JD-0039



1174

Z11706
KAMALI MİL
(KISA)

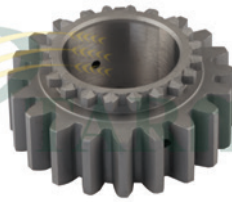
JD-0040



1174

Z11550
TEK KAMALI DİŞLİ

JD-0041



1174

Z11556
1 VE GERİ VİTES DİŞLİSİ

JD-0042



1174

Z11553
GRUP PRİZDİREK DİŞLİSİ

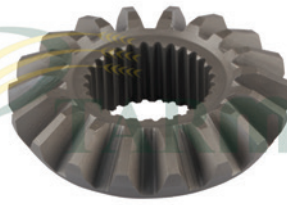
JD-0043



630

H33512
DİFERANSİYEL AKSİ
(ESKİ MODEL)

JD-0044



1030-1130-2030

L28376
AKS DİŞLİSİ TRAKTÖR
(ESKİ MODEL)

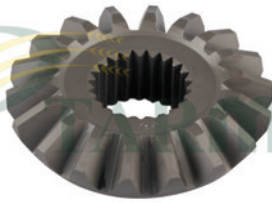
JD-0045



965-975

Z35514
DİFERANSİYEL AKSİ
(ÖZEL) - (UZUN) - (SOL)

JD-0046



630-955

T29394
İSTAVROZ DİŞLİSİ
(YENİ MODEL)

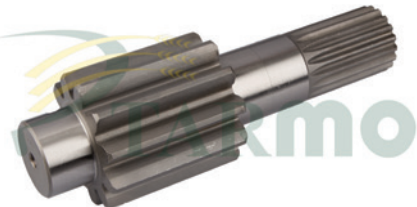
JD-0047



630-955-1170

H103167
KAMALI MİL ARA PULU

JD-0048



2000-9000-CTS SERİSİ

H157014
PİNYON DİŞLİ
(Z-11) - (CER KARŞILIĞI)



TARMO A.Ş.

JOHN DEERE

www.tarmo.com.tr

JD-0049



2000 SERİSİ

Z12905
DİFERANSİYEL AKS MİLİ
(FREZELİ)

JD-0050



2000 SERİSİ

Z12885-Z12521
DİFERANSİYEL AKS DİŞLİSİ
(HELİS)

JD-0051



630-955

Z11284-Z10770
BÜYÜK TEKER ŞAPKALI AKS
(DÖVME)

JD-0052



965-975-985-1085-1174

Z11791-Z11622
BÜYÜK TEKER ŞAPKALI AKS
(DÖVME)

JD-0053



630

AZ16162
ARKA AKS

JD-0054



955

AZ29047-AZ23688
ARKA AKS

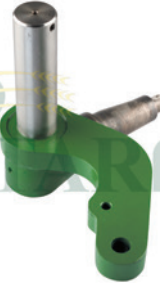
JD-0055



965-975-985-1055-1075

AZ28787
ARKA AKS

JD-0056



1174-1177-4425

AZ35624
ARKA AKS
(TEK KULAKLI) - (SOL)

JD-0057



1174-1177-4425

AZ37246
ARKA AKS
(ÇİFT KULAKLI) - (SAĞ)

JD-0058



900-1000 SERİSİ

H21871
BÜYÜK TEKER ŞAPKALI AKS SOMUNU

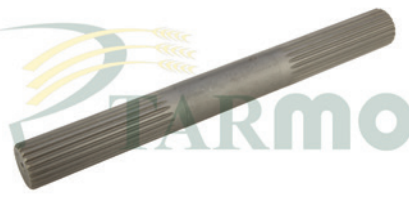
JD-0060



630

H36520
AKS MİLİ
(Z-21) - (596mm) - (UZUN) - (SAĞ)

JD-0061



630

H36521
AKS MİLİ
(Z-21) - (348mm) - (KISA) - (SOL)



TARMO A.Ş.

JOHN DEERE

www.tarmo.com.tr

JD-0062



955

Z32611

AKS MİLİ

(Z-21) - (671mm) - (UZUN) - (SOL)

JD-0063



955

Z32612

AKS MİLİ

(Z-21) - (273,5mm) - (KISA) - (SAĞ)

JD-0064



950-960-970

Z32614

AKS MİLİ

(Z-21) - (811mm)

JD-0065



950-960-970

Z32613

AKS MİLİ

(Z-21) - (527mm)

JD-0066



950-960-970

H36522

AKS MİLİ

(Z-21) - (850mm)

JD-0067



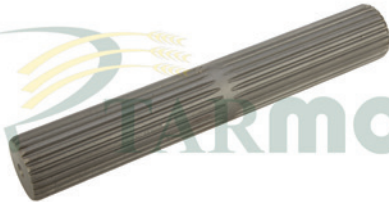
955 SÜPER

Z37933

AKS MİLİ

(Z-23) - (645mm) - (UZUN) - (SOL)

JD-0068



955 SÜPER

Z37934

AKS MİLİ

(Z-23) - (246mm) - (KISA) - (SAĞ)

JD-0069



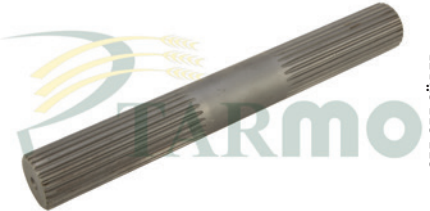
955-955 SÜPER

Z37937

AKS MİLİ

(Z-23) - (593mm) - (UZUN) - (SOL)

JD-0070



955-955 SÜPER

Z37938

AKS MİLİ

(Z-23) - (295,5mm) - (KISA) - (SAĞ)

JD-0071



1450-1170

Z37941

AKS MİLİ

(Z-23) - (811mm)

JD-0072



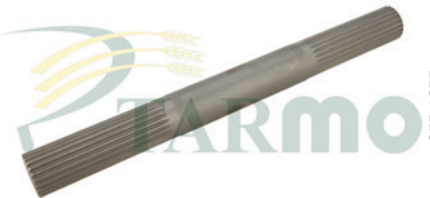
975-1075-1174-1177

Z37940

AKS MİLİ

(Z-23) - (550mm)

JD-0073



955-1055

Z38335

AKS MİLİ

(Z-23) - (386mm)



TARMO A.Ş.

JOHN DEERE

www.tarmo.com.tr

JD-0074



955

Z38796
AKS MİLİ
(Z-23) - (435mm)

JD-0075



955-1055

Z38336
AKS MİLİ
(Z-23) - (785mm)

JD-0076



950-955-960-970

Z38794
AKS MİLİ
(Z-23) - (735mm)

JD-0077



1185-1450-1550-2054

Z59336
AKS MİLİ
(Z-23) - (507mm)

JD-0078



1165-1175-1450-1550

CQ24615
AKS MİLİ
(Z-23) - (581mm)

JD-0079



1165-6300-7700

CQ05101
AKS MİLİ
(Z-23) - (400mm) - (SAĞ)

JD-0080



1165-1175-6300-7300

CQ06569
AKS MİLİ
(Z-23) - (660mm) - (SAĞ)

JD-0081



1165-1175-6300-7300

CQ05100
AKS MİLİ
(Z-23) - (700mm) - (SOL)

JD-0082



1165-1175-1450-1550

CQ14131
AKS MİLİ
(Z-23) - (800mm) - (SAĞ)

JD-0083



1165-1175-1450-1550

CQ12569
AKS MİLİ
(Z-23) - (840mm) - (SOL)

JD-0084



1450

AKS MİLİ
(Z-23) - (515mm)

JD-0086



2000 SERİSİ

AKS MİLİ
(Z-23) - (850mm)



TARMO A.Ş.

JOHN DEERE

www.tarmo.com.tr

JD-0087



630-955

Z31218
AKS FREZESİ
(Z-21)

JD-0088



955

Z37932
AKS FREZESİ
(Z-23)

JD-0089



1450-1550

H133231
AKS FREZESİ
(Z-23)

JD-0090



955

Z35607
MOTORBAŞI KUYRUK MİLİ
(Z-24) - (SIK FREZELİ)

JD-0091



630

Z30509
MOTORBAŞI KUYRUK MİLİ
(Z-11) - (FREZELİ) - (UZUN)

JD-0092



630

Z21274
MOTORBAŞI KUYRUK MİLİ
(Z-11) - (FREZELİ) - (KISA)

JD-0093



1174

Z11407
MOTORBAŞI KUYRUK MİLİ
(34,50cm)

JD-0094



965-975

Z37189
MOTORBAŞI KUYRUK MİLİ
(37cm)

JD-0095



975-985-1085-1185

Z11409
MOTORBAŞI KUYRUK MİLİ
(27cm)

JD-0096



1057-1157

Z11746
MOTORBAŞI KUYRUK MİLİ
(31cm)

JD-0097



1450

DQ10365-CQ51034
MOTORBAŞI KUYRUK MİLİ
(27cm)

JD-0098

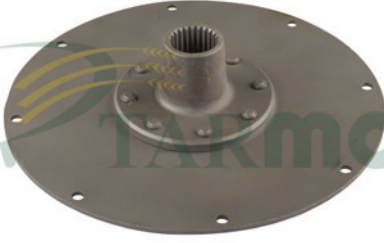


965-968-975

Z38620-Z38850
MOTORBAŞI KUYRUK MİLİ
(42cm)



JD-0099



955

AZ22756
MOTORBAŞI SACLI DİSKİ
(SIK DIŞ)

JD-0100



630

AZ18174-AZ22624
MOTORBAŞI SACLI DİSKİ
(SEYREK DIŞ)

JD-0101



630

AZ10598
MOTORBAŞI SACLI DİSKİ
(ESKİ MODEL)

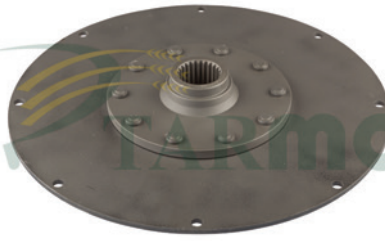
JD-0102



1174

AZ42393
MOTORBAŞI SACLI DİSK

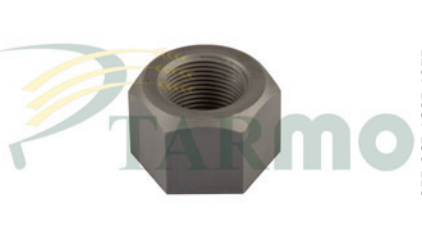
JD-0103



1450

DQ23827
MOTORBAŞI KUYRUK MİLİ SACLI
DİSKİ

JD-0104



955-965-1065-1075

14M7176
MOTORBAŞI MİLİ SOMUNU

JD-0106



630-955

H61954
ZIPKA - (İKİLİ) - (YARIM SULU)
(DÖVME)

JD-0107



630-955

Z11228
ZIPKA - (İKİLİ) - (TAKVİYELİ)
(YARIM SULU) - (DÖVME)

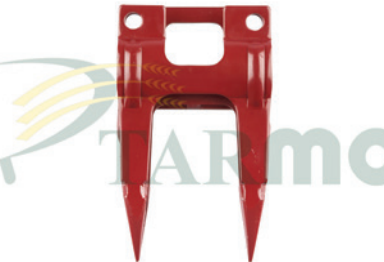
JD-0108



630-955

H25603
ZIPKA
(3'LÜ) - (SFERO)

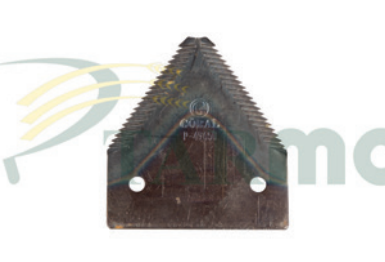
JD-0109



1174

Z11785
ZIPKA - (SAC)
(ORİJİNAL) - (USA)

JD-0110



630-955

P49650
BIÇAK
(20 DIŞ)

JD-0111



1157-1170-1174

Z47493
BIÇAK
(20 DIŞ) - (ÜÇGEN DELİKLİ)



TARMO A.Ş.

JOHN DEERE

www.tarmo.com.tr

JD-0112



1174

Z52672
BİÇAK

JD-0113



420100045
BİÇAK
(SCH TİPİ) - (ÇİFT DELİKLİ)

JD-5097



630-955

Z21972
BİÇAK MASTAR ŞERİDİ
(440cm)

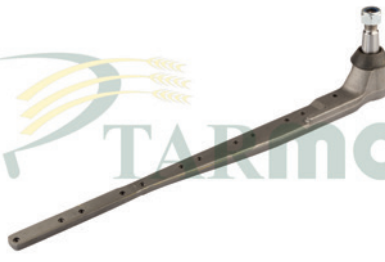
JD-5098



975-1050

Z47473
BİÇAK MASTAR ŞERİDİ
(68 BİÇAK)

JD-0120



1157-1158-1174

AZ50341
MASTAR ROTU
(UZUN)

JD-0121



800 SERİSİ TABLALAR

AZ41726
MASTAR ROTU
(KISA)

JD-0122



1450

AZ47383
MASTAR ROTU

JD-0123



630-955

AH21346
MASTAR ROTBAŞI
(SULU) - (DÖVME)

JD-0124



630-900 SERİSİ

AH21345
BİÇAKKOLU ROT BAŞI
(SULU) - (DÖVME)

JD-0125



630-955

AH75396
ARKA DİREKSİYON ROTU
(DİŞİ)

JD-0126



630-955

AH75397
ARKA DİREKSİYON ROTU
(ERKEK)

JD-0127



630-955

AZ10850
ARKA DÖNÜŞ ROTU
(SOL DİŞ)



TARMO A.Ş.

JOHN DEERE

www.tarmo.com.tr

JD-0128



630-955

AZ10851
ARKA DÖNÜŞ ROTU
(SAĞ DİŞ)

JD-0129



965-975-1055-1065-1085

AZ28775-AZ39038
ARKA DİREKSİYON ROTU
(ERKEK)

JD-0130



965-975-1055-1065-1085

AZ28776
ARKA DİREKSİYON ROTU
(DİŞİ)

JD-0131



1174

AZ40007
ARKA DİREKSİYON ROTU
(ERKEK)

JD-0132



1174

AZ40008
ARKA DİREKSİYON ROTU
(DİŞİ)

JD-0133



1174

AZ28777
ARKA DÖNÜŞ ROTU
(SAĞ DİŞ)

JD-0134



1174

AZ28778
ARKA DÖNÜŞ ROTU
(SOL DİŞ)

JD-0135



PAMUK TOPLAMA MAKİNASI

AH94057
ROT
(ERKEK)

JD-0136



1000-1100 SERİSİ

AE28237
BİÇAKKOLU ŞANZİMAN
(KOL-KASNAK HARIÇ)

JD-0137



1000-1100 SERİSİ

AE28237
BİÇAKKOLU ŞANZİMAN
(KOMPLE)

JD-0138



1000-1100 SERİSİ

AE28203-AE28204
BİÇAKKOLU ŞANZİMAN BOŞ KUTUSU

JD-0139



1000-1100 SERİSİ

E40819
BİÇAKKOLU ŞANZİMAN ÇATALI
(DÖVME)

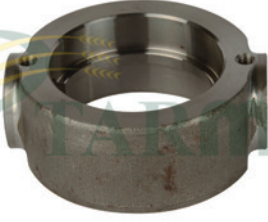


TARMO A.Ş.

JOHN DEERE

www.tarmo.com.tr

JD-0140



1000-1100 SERİSİ

AE27185

BIÇAKKOLU ŞANZIMAN İÇ YATAĞI
(DÖVME)

JD-0141



1000-1100 SERİSİ

AE28390-E60128

BIÇAKKOLU ŞANZIMAN EKSANTRİK
MİLİ

JD-0142



1000-1100 SERİSİ

H86911

BIÇAKKOLU ŞANZIMAN SALLAMA
KOLU - (DÖVME)

JD-0143



1000-1100 SERİSİ

E55264-H98780

BIÇAKKOLU ŞANZIMAN SALLAMA
KOLU KARŞILIĞI

JD-0144



1000-1100 SERİSİ

E52444

BIÇAKKOLU ŞANZIMAN SALLAMA
KOLU - (TERS)

JD-0145



1000-1100 SERİSİ

AE28140-AE35152

BIÇAKKOLU ŞANZIMAN DIŞ YATAĞI

JD-0146



1000-1100 SERİSİ

E43168

BIÇAKKOLU ŞANZIMAN ÇATAL PİMİ

JD-0147



1000-1100 SERİSİ

E78705-E48349

BIÇAKKOLU ŞANZIMAN KASNAĞI

JD-0148



1000-1100 SERİSİ

JD9841

BIÇAKKOLU ŞANZIMAN ÇATAL BURCU

JD-0149



1000-1100 SERİSİ

AH16581

BIÇAKKOLU ŞANZIMAN ÇATAL KEÇESİ

JD-1490



1000-1100 SERİSİ

L1584C

BIÇAKKOLU ŞANZIMAN EKSANTRİK
MİL KEÇESİ

JD-1491



1000-1100 SERİSİ

BIÇAKKOLU ŞANZIMAN ALT KEÇESİ



TARMO A.Ş.

JOHN DEERE

www.tarmo.com.tr

JD-0150



BÜTÜN MODELLER

AH63330
TAZYİK SİBOBU
(GARANTİLİ)

JD-0151



BÜTÜN MODELLER

AL23836
FREN SİBOBU

JD-0152



630

AZ16163
HIZ PİSTONU
(KALIN TİP) - (KOMPLE)

JD-0153



955

AZ23704
HIZ PİSTONU
(KALIN TİP) - (KOMPLE)

JD-0154



630

AZ16164
TIRMIK PİSTONU
(KOMPLE)

JD-0155



955

AZ18452
TIRMIK PİSTONU
(SAĞ) - (KOMPLE)

JD-0156



955

AZ18451
TIRMIK PİSTONU
(SOL) - (KOMPLE)

JD-0157



630-955

AZ21951-AZ16232
DİREKSİYON PİSTONU
(KOMPLE)

JD-0158



630

AZ10164
TABLA PİSTONU
(KOMPLE)

JD-0159



955

AZ23716-AZ23703
TABLA PİSTONU
(KOMPLE)

JD-0160



1174

AZ45760
TABLA PİSTONU
(KOMPLE)

JD-0161



1157-1174

AZ45759-AZ39037
DİREKSİYON PİSTONU
(KOMPLE)



TARMO A.Ş.

JOHN DEERE

www.tarmo.com.tr

JD-0162



630-955

AZ27651
HIZ PİSTON MİLİ
(KALIN PİSTON İÇİN)

JD-0163



630-955

AZ21952
DİREKSİYON MİLİ
(ŞAPKALI) - (YENİ MODEL)

JD-0165



630-955

H23005
YÜRÜTÜCÜ KASNAK BURCU
(140x132x38mm)

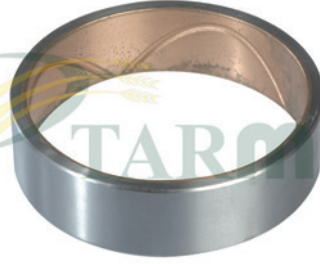
JD-0166



630-955

H23005
YÜRÜTÜCÜ KASNAK BURCU
(STANDART)

JD-0167



630-955

H23005
YÜRÜTÜCÜ KASNAK BURCU
(141x126x50mm)

JD-0168



630-955

Z21088
BOŞALTICI HELEZON YATAK BURCU
(58x50x38mm)

JD-0169



630-955

Z27522
AKS BURCU
(44x40x40mm)

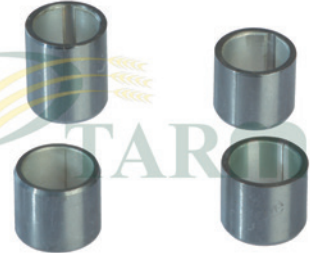
JD-0170



630-955

Z21575
ARKA DİNGİL BURCU
(36x25x50mm)

JD-0171



630-955

Z33642
HİDROLİK POMPA BURCU
(4 ADET TAKIM)

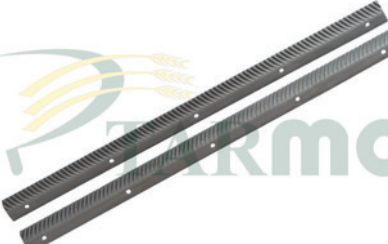
JD-0173



630-955

AZ10690-AZ10691
BATÖR LAMASI
(102cm) - (DELİKLİ)

JD-0174



975-1170-1174-1450

AZ13335-AZ13336
BATÖR LAMASI
(128cm) - (DELİKLİ)

JD-0175



985-1085-1180-1188

AZ26343-AZ26344
BATÖR LAMASI
(154cm) - (DELİKLİ)



JD-0177



BÜTÜN MODELLER

Z11542
ÇELTİK BATÖR DİŞİ

JD-0180



630-955

AR27977
YAĞ MÜŞİRİ

JD-0181



630

AZ15473
HARARET MÜŞİRİ

JD-0182



945-955-965-975-1174

AR67543
ELEKTRİKLİ MAZOT OTOMATIĞI
İTHAL

JD-0183



630-955

AL24526
HARARET SAATİ
(TAYVAN)

JD-0184



FAR

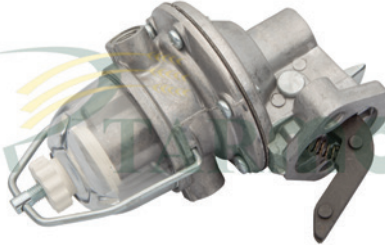
JD-0185



630-955

R82131
MAZOT L RAKORU

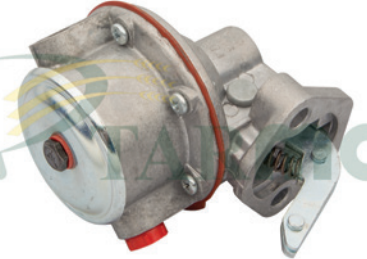
JD-0186



630-955

DD14292
MAZOT OTOMATIĞI
(ŞİŞELİ)

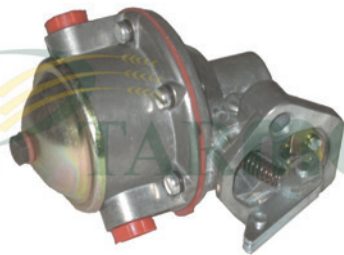
JD-0187



630-955

DD14292
MAZOT OTOMATIĞI
(ŞİŞESİZ)

JD-0188



955 SÜPER

DD14292
MAZOT OTOMATIĞI

JD-0189



1174-1450

RE38009
MAZOT OTOMATIĞI

JD-0190



900 SERİSİ-630-1155

AR89563
ENJEKTÖR MEMESİ



TARMO A.Ş.

JOHN DEERE

www.tarmo.com.tr

JD-0191



1155-1158-TRAKTÖR

AR89564
ENJEKTÖR MEMESİ

JD-0192



TRAKTÖR

RE38057
ENJEKTÖR MEMESİ

JD-0193



TRAKTÖR

RE60062
ENJEKTÖR MEMESİ

JD-0194



TRAKTÖR

RE44508
ENJEKTÖR MEMESİ

JD-1940



900 SERİSİ-TRAKTÖR

AR68364
ENJEKTÖR MEMESİ

JD-1941



630-955

AR85618
ENJEKTÖR BAŞLIĞI
(KALIN T)

JD-1942



630-955

AT27622
ENJEKTÖR BAŞLIĞI
(İNCE T)

JD-1943



900 SERİSİ-1055

AR55378-RE16495
PİSTON KOLU

JD-1944



900 SERİSİ-1055

R55647
PİSTON KOL BURCU

JD-1945



630

AT31610-R48768
GÖMLEK LASTİĞİ
(102'LİK)

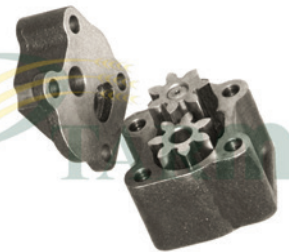
JD-1946



955

AR71618
GÖMLEK LASTİĞİ
(106'LİK)

JD-1947



630-955

DD14760
YAĞ POMPASI
(KOMPLE)



TARMO A.Ş.

JOHN DEERE

www.tarmo.com.tr

JD-1948



630-955

T23220
MOTOR KARTERİ

JD-1949



955-965-1065-1174

AR59621
KARTER YAĞ SÜZGEÇİ

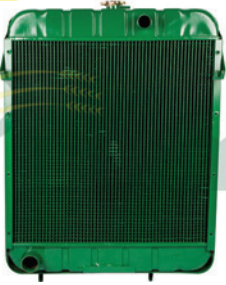
JD-1950



630-955

AT21535
MOTOR YAĞ ÇUBUĞU

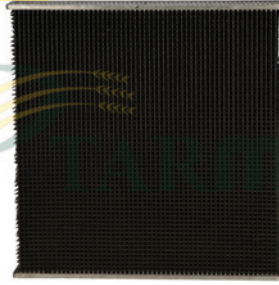
JD-1951



975-1065-1075

AZ23833
RADYATÖR

JD-1952



RADYATÖR PETEĞİ

JD-1953



1174-1177

AL67206-AL67207
STOP LAMBASI
(SAĞ-SOL)

JD-1954



630

R48992
DEVİRDAİM

JD-1955



955

AR52396
DEVİRDAİM

JD-1956



955 SÜPER

AR76290
DEVİRDAİM

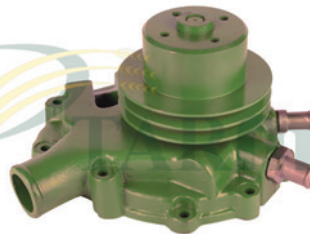
JD-1957



630

41313018
DEVİRDAİM
(PERKINS)

JD-1958



975-1174-1450

RE14370
DEVİRDAİM

JD-0195



630-955

AZ19980
TABLA GERĞİ TELİ



TARMO A.Ş.

JOHN DEERE

www.tarmo.com.tr

JD-0196



955

AZ21465
EL FREN TELİ

JD-0197



955

AZ19599
DEVİR TELİ

JD-0198



955 SÜPER

AZ19599H
DEVİR TELİ

JD-0199



1174

AZ24935
VİTES TELİ
(ÜÇLÜ VALFİN)

JD-0200



955

AZ29787-AZ21469
VİTES TELİ
(220cm)

JD-0201



965-975

AZ29788
VİTES TELİ
(252cm)

JD-0202



1055-1065

AZ27966
VİTES TELİ
(262cm)

JD-0203



1058-1075

AZ29789
VİTES TELİ
(272cm)

JD-0204



1065-1157-4435

AZ34569
VİTES TELİ

JD-0205



1174-1072-1177

AZ34570
VİTES TELİ

JD-0206



955

AZ21467-AZ24928
DEBRİYAJ TELİ

JD-0207



1174

AZ21464
DEBRİYAJ TELİ



TARMO A.Ş.

JOHN DEERE

www.tarmo.com.tr

JD-0208



STOP TELİ
(YERLİ MALZEMELİ)

JD-0209



HİDROSTATİK TELİ
(YERLİ MALZEMELİ)

JD-0210



HİDROSTATİK TELİ
(YERLİ MALZEMELİ)

JD-0211



STOP TELİ
(ORİJİNAL MALZEMELİ)

JD-0212



STOP TELİ
(ORİJİNAL MALZEMELİ)

JD-0213



HİDROSTATİK TELİ
(ORİJİNAL MALZEMELİ)

JD-0214



HİDROSTATİK TELİ
(ORİJİNAL MALZEMELİ)

JD-0229



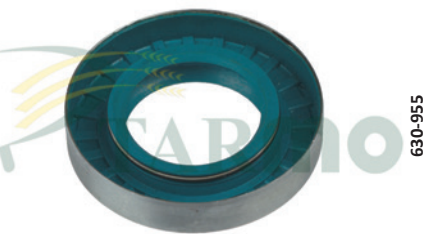
AZ19889
VİTES TELİ ROTCUĞU

JD-0240



AH12466
YÜRÜTÜCÜ KASNAK KEÇESİ
(BÜYÜK)

JD-0241



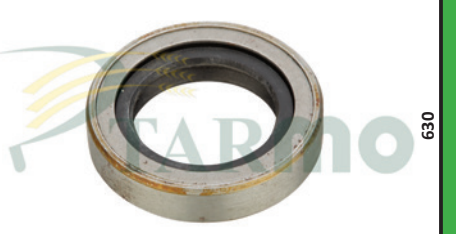
AZ17932
YÜRÜTÜCÜ KASNAK KEÇESİ
(KÜÇÜK)

JD-0242



AH12089
ÖN AKS KEÇESİ
(BÜYÜK)

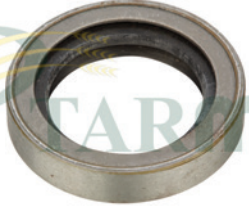
JD-0243



AN32717
PİNYON DİŞLİ KEÇESİ



JD-0244



955

T22069
PİNYON DİŞLİ KEÇESİ

JD-0245



630-955

AP19572
PRİZDİREK KEÇESİ

JD-0246



630

AZ10374
ÖN GÖTÜRÜCÜ DİŞLİ KEÇESİ

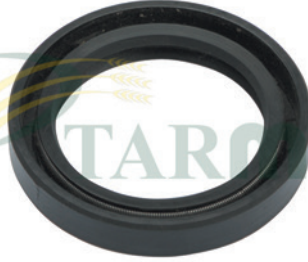
JD-0247



630-955

AZ16786
KAMALI MİL KEÇESİ

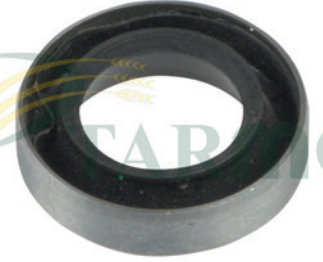
JD-0248



630-955

AZ12215
PATOZ KASNAK KEÇESİ

JD-0249



630-955

AP19599
ŞANZİMAN ÇATAL MİLİ KEÇESİ

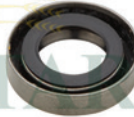
JD-0250



630-955

AH21815
DİFERANSİYEL AKS MİLİ KEÇESİ

JD-0251



630-955

Z31038
HİDROLİK POMPA KEÇESİ

JD-0252



630-955

Z22296-Z22297
BATÖR KASNAK KIL KEÇESİ - (TAKIM)

JD-0253



630-955

AH12467
YÜRÜTÜCÜ KASNAK KIL KEÇESİ
(BANT)

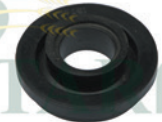
JD-0254



630-955

AR101549
DEVİRDAİM SALMASTRASI
(SACLI) - (TAKIM)

JD-0255



630-955

T27261
DEVİRDAİM SALMASTRASI
(ORİJİNAL TİP)



TARMO A.Ş.

JOHN DEERE

www.tarmo.com.tr

JD-0256



630-955

AR41691
DEVİRDAİM SALMASTRASI PULU
(PORSELEN)

JD-0257



630-955

AR92893
KRANK KEÇESİ ARKA
(ORİJİNAL) - (USA)

JD-0258



630-955

AR67942
KRANK KEÇESİ ÖN
(ORİJİNAL) - (USA)

JD-0260



630-955

AZ37841
TABLA PİSTONU TAMİR TAKIMI

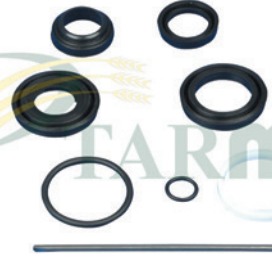
JD-0261



630-955

AZ42360
HIZ PİSTON TAMİR TAKIMI

JD-0262



630-955

AZ37816
HIZ PİSTON TAMİR TAKIMI
(CLAYSON TİP)

JD-0263



630

Z45926A
TIRMIK PİSTON TAMİR TAKIMI

JD-0264



955

AZ37817
TIRMIK PİSTON TAMİR TAKIM
(SAĞ)

JD-0265



955

AZ37848
TIRMIK PİSTON TAMİR TAKIMI
(SOL)

JD-0266



76 MODEL

Z48696
DİREKSİYON PİSTON TAMİR TAKIMI

JD-0267



73 MODEL

Z45927
DİREKSİYON PİSTON TAMİR TAKIMI

JD-0268



630-955

AE27937
HİDROLİK POMPA TAMİR TAKIMI



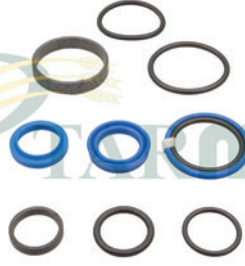
JD-0269



630-955

AZ22654
ANA MERKEZ TAMİR TAKIMI

JD-2690



1000 SERİSİ

AZ37844-AZ46895
DİREKSİYON PİSTON TAMİR TAKIMI

JD-2691



955-965-1055-1065

RE11345
DEVİRDİİM TAMİR TAKIMI

JD-2692



955-965-1055-1065

T30897
DEVİRDİİM USKURU
(ÇARK)

JD-0270



630-955

26M6731
AY KAMA
(6mm) - (TAŞLANMIŞ) - (KÜÇÜK BOY)

JD-0271



630-955

26M6733
AY KAMA
(8mm) - (TAŞLANMIŞ) - (ORTA BOY)

JD-0272



630-955

26M6787
AY KAMA
(10mm)-(TAŞLANMIŞ) - (BÜYÜK BOY)

JD-0273



630-955

26M7000
AY KAMA
(MOTORBAŞI MİLİNİN)

JD-0274



630-955

N34986
HİDROLİK POMPA KAMASI

JD-0275



630-955

49M4836
SARSAK KRANK KAMASI
(8x8x45mm)

JD-0276



630

49M4129
BATÖR KAMASI
(10x8x150mm)

JD-0277



630

49M7031
BATÖR TAMBUR KAMASI
(10x8x200mm)



TARMO A.Ş.

JOHN DEERE

www.tarmo.com.tr

JD-0278



955

49M7018
BATÖR KAMASI
(12x8x140mm)

JD-0279



955

49M7019
BATÖR TAMBUR KAMASI
(12x8x180mm)

JD-0280



955

ÖZEL
TAMBUR KAMASI
(12x8x200mm)

JD-0281



955

49M7021
TAMBUR KAMASI
(12x8x300mm)

JD-0282



900-1000 SERİSİ

50M4203
GÖTÜRÜCÜ DİŞLİ KAMASI
(BURUNLU)

JD-0291



1000 SERİSİ

Z11366
HELEZON PARMAĞI
(20cm) - (DÖRTKÖŞE KAFALI)

JD-0292



1170-1174

H162662-H102724
HELEZON PARMAĞI
(26,50cm) - (DÖRTKÖŞE KAFALI)

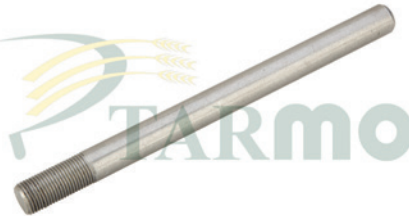
JD-0293



1450

H169914
HELEZON PARMAĞI
(ÇİFT DELİKLİ) - (UZUN)

JD-0294



630-955

Z26570
HELEZON PARMAC CİVATASI

JD-0295



630-955

14M7131
HELEZON PARMAC CİVATASI
SOMUNU

JD-0296



1170-1174

AZ49213
HELEZON PARMAC BAĞLANTI SACI

JD-0297



1000-2000 SERİSİ

H172459
HELEZON PARMAC
U- SACI



TARMO A.Ş.

JOHN DEERE

www.tarmo.com.tr

JD-0298



1000 SERİSİ

28316

HELEZON PARMAK KOPİLYASI

JD-0299



1000-2000 SERİSİ

H169913

PARMAK T FİBER KOPİLYASI

JD-0305

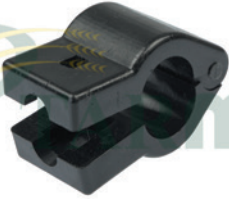


630-955

AR26382

RADYATÖR PERVANESİ

JD-0306



630-955

AZ20696

HELEZON PARMAK T-YATAĞI
(Ø 25mm) - (KELEPÇELİ) - (PLASTİK)

JD-0307



1450

AH171602

HELEZON PARMAK T-YATAĞI
(Ø 45mm) - (KELEPÇELİ) - (PLASTİK)

JD-0308

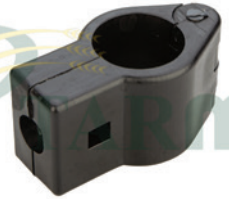


630-955-975

DQ16220

HELEZON PARMAK T FİBERİ
KELEPÇELİ - (30'LUK)

JD-0309

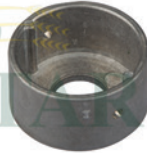


1050-1157-1450

AH107066

HELEZON PARMAK T FİBERİ
KELEPÇELİ - (35'LİK)

JD-0310

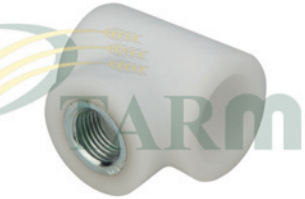


1450-1550-600 SERİSİ

H169912

HELEZON PARMAK KELEPÇE YATAĞI
(ALÜMİNYUM)

JD-0311



630-955

AZ20696

HELEZON PARMAK T-YATAĞI
(PLASTİK)

JD-0312



630-955

Z30752

HELEZON PARMAK NAYLONU

JD-0313



1450-1550-600 SERİSİ

H168206

HELEZON PARMAK FİBERİ
(TAKVİYELİ)

JD-0314



630-955

Z27380-Z55823

ÇİFTLİ TIRMIK FİBERİ



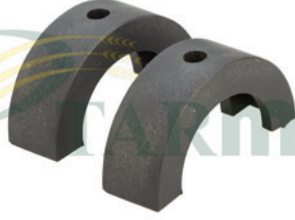
JD-0315



1000 SERİSİ

H175727
ÇİFTLİ TIRMIK FİBERİ

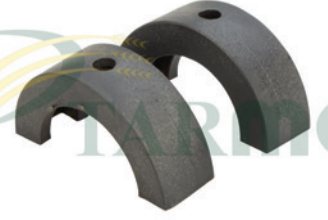
JD-0316



1174

Z39428
SARSAK TAKOZU - (YARIM AY)
(TAKIM) - (DAR) - (PLASTİK)

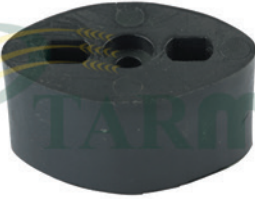
JD-0317



1174

CQ74491
SARSAK TAKOZU - (YARIM AY)
(TAKIM) - (GENİŞ) - (PLASTİK)

JD-0318



630-955

Z21312
GERĞİ TAKOZU
(OVAL)

JD-0319



630-955

Z20418
GERĞİ TAKOZU
(ÖKÇE)

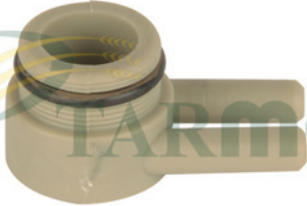
JD-0320



955

Z10428
ZİNCİR GERĞİ MAKARASI

JD-0321



630-955-965-975-1174

AZ21028
HİDROLİK FREN PİPOSU

JD-0322



630

Z20485
DOLAP BURCU

JD-0323



630-955

Z31550
DOLAP YILDIZ BURCU
(TIRNAKLI)

JD-0330



630-955

AZ21576
SARSAK KRANKI
(Ø 35mm) - (4 SARSAK)

JD-0331



630-955

AZ29928
SARSAK KRANKI - (Ø 35mm)
(4 SARSAK) - (ORTADAN BİLEZİKLİ)

JD-0332



900-1000 SERİSİ

AZ29300-AZ36245
SARSAK KRANKI - (Ø 38mm)
(4 SARSAK) - (ORTADAN BİLEZİKLİ)



TARMO A.Ş.

JOHN DEERE

www.tarmo.com.tr

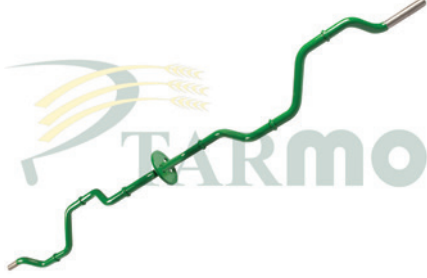
JD-0333



1075-1174-1177

AZ37648-AZ28107
SARSAK KRANKI
(Ø 38mm) - (5 SARSAK)

JD-0334



1085-1185-1188

AZ40873-AZ32426
SARSAK KRANKI
(Ø 28mm) - (6 SARSAK)

JD-0335



2054-2056-2058

AZ46207-AZ49936
SARSAK KRANKI
(Ø 38mm) - (5 SARSAK)

JD-0336



2064-2066-2264-2266

AZ49574
SARSAK KRANKI
(Ø 38mm) - (6 SARSAK)

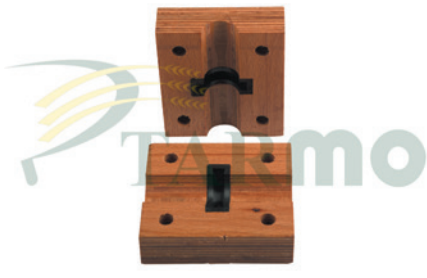
JD-0337



985-1085

AZ28016
SARSAK KRANKI
(Ø 38mm) - (6 SARSAK)

JD-0339



1085-1185-1188

AZ31215-AZ42249
SARSAK TAKOZU
(Ø 28mm) - (AHŞAP)

JD-0340



630-955

AZ31216
SARSAK TAKOZU
(Ø 35mm)

JD-0341



1174

AZ31217
SARSAK TAKOZU
(Ø 38mm) - (ORTADAN BİLEZİKLİ)

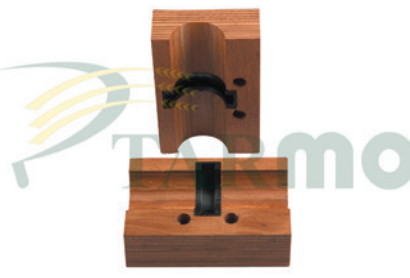
JD-0342



965-975-1157

AZ21612
SARSAK TAKOZU
(Ø 35mm) - (ORTADAN BİLEZİKLİ)

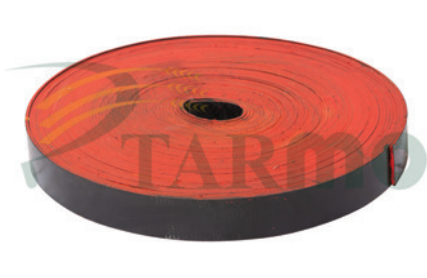
JD-0343



965-975-1157

AZ45586
SARSAK TAKOZU - (Ø 38mm)
(ORTADAN BİLEZİKLİ) - (2 DELİKLİ)

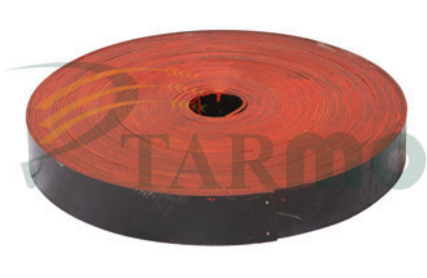
JD-0345



630-955

Z20262
SAĞIR ELEK GETİ
(7'LİK) - (4,5mm) - (1.KALİTE)

JD-0346



630-955

Z20262
SAĞIR ELEK GETİ
(8'LİK) - (4,5mm) - (1.KALİTE)

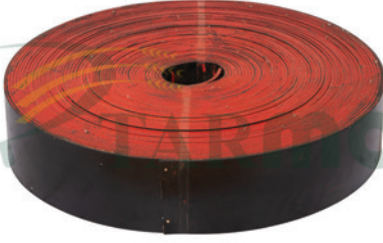


TARMO A.Ş.

JOHN DEERE

www.tarmo.com.tr

JD-0347



630-955

Z20262
SAĞIR ELEK GETİ
(12'LİK) - (4,5mm) - (1.KALİTE)

JD-0348



965-975-1065-1085

Z35497
SAĞIR ELEK GETİ
(36'LİK) - (4,5mm) - (1.KALİTE)

JD-0349



630-955

Z35497
SAĞIR ELEK GETİ
(40'LİK) - (4,5mm) - (1.KALİTE)

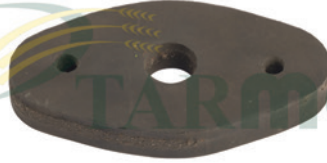
JD-0350



630-955

Z20781
BUĞDAY TAŞIYICI LASTİK PALET

JD-0351



630-955

Z30752
HELEZON PARMAK GETİ
(KAUÇUK)

JD-0352



1450-1175

AZ54780
BEŞİK TAKOZU
(41x20x42mm)

JD-0353



630-955

P42100
ELEK LASTİK TAKOZU
(PRES) - (KÜÇÜK)

JD-0354



630-955

P49545
ELEK LASTİK TAKOZU
(PRES) - (BÜYÜK)

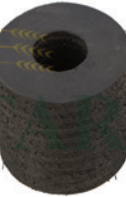
JD-0355



630-955

P42100
ELEK LASTİK TAKOZU
(KESME) - (KÜÇÜK)

JD-0356



630-955

P49545
ELEK LASTİK TAKOZU
(KESME) - (BÜYÜK)

JD-0357



630-955

P48666
ŞANZIMAN KAPAK CONTASI
(MANTAR)

JD-0358



630-955

Z44261
CER KOVAN KAPAK CONTASI
(MANTAR)



TARMO A.Ş.

JOHN DEERE

www.tarmo.com.tr

JD-0359



630-955

Z38278
ŞANZIMAN KOVAN CONTASI
(KLİNGERİT)

JD-3590



630-955

T20271
DEVİRDAİM CONTASI TAKIM
(KLİNGERİT)

JD-3591



BÜTÜN MODELLER

E47141
BİÇAKKOLU ŞANZIMAN KAPAK
CONTASI

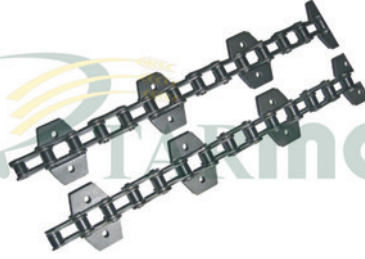
JD-0360



630

AZ14216
GÖTÜRÜCÜ ZİNCİR
(19 KULAK) - (TAKVİYELİ)

JD-0361



955

AZ18658
GÖTÜRÜCÜ ZİNCİR
(22 KULAK) - (TAKVİYELİ)

JD-0362



630-955

AZ10367
ELEVATÖR ZİNCİRİ
(TANE) - (TAKVİYELİ)

JD-0363



630-955

AZ24219
ELEVATÖR ZİNCİRİ
(KESMİK - TAKVİYELİ)

JD-0364



630-955

AZ24231
GÖTÜRÜCÜ ZİNCİR KULAKLI KİLİDİ
(TAKVİYELİ)

JD-0365



630-955

AZ24232
GÖTÜRÜCÜ ZİNCİR KİLİDİ
(TAKVİYELİ)

JD-0366



630-955

AZ24233
GÖTÜRÜCÜ ZİNCİR YARIM EKİ
(TAKVİYELİ)

JD-0367



1174

AZ34254
GÖTÜRÜCÜ ZİNCİR
(TAKVİYELİ)

JD-0368



1450

DQ41476-DQ41477
GÖTÜRÜCÜ ZİNCİR
(TAKVİYELİ)

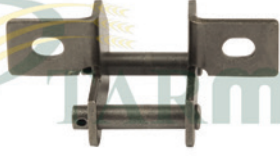


TARMO A.Ş.

JOHN DEERE

www.tarmo.com.tr

JD-0369



630-955

AL15480
ELEVATÖR ZİNCİRİ KULAKLI KİLİDİ

JD-0370



630-955

AZ10591
ZİNCİR
(ASA 40-1)

JD-0371



630-955

AZ10279
ZİNCİR
(ASA 50-1)

JD-0372



1174

AZ38199
ZİNCİR
(ASA 60-1)

JD-0373



630-955

AZ32090
ZİNCİR
(ASA 2040)

JD-0374



BALYA MAKİNASI

ZİNCİR
(ASA 2050)

JD-0375



630-955

AL14207
ZİNCİR KİLİDİ
(ASA 40-1)

JD-0376



630-955

AL14209
ZİNCİR KİLİDİ
(ASA 50-1)

JD-0377



1174

AZ36076
ZİNCİR KİLİDİ
(ASA 60-1)

JD-0378



630-955

AL15954
ZİNCİR KİLİDİ
(ASA 2040)

JD-0379



BALYA MAKİNASI

ZİNCİR KİLİDİ
(ASA 2050)

JD-0380



630-955

AZ12882
ZİNCİR YARIM EKİ
(ASA 50-1)



TARMO A.Ş.

JOHN DEERE

www.tarmo.com.tr

JD-0381



1174

J4217H
ZİNCİR YARIM EKİ
(ASA 60-1)

JD-0382



955

AN102383
KAPLIN ZİNCİR
(ÇİFT SIRA)

JD-0383



630-955

AL15953
ZİNCİR YARIM EKİ
(ASA 2040)

JD-0393



630-955

H80830
BIÇAKKOLU VALS YATAĞI
(SFERO)

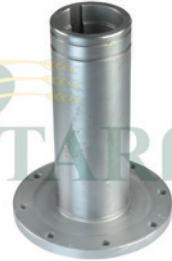
JD-0394



900 SERİSİ

Z11231-Z11232
BIÇAKKOLU VALS YATAĞI
(PARÇALI) - (SFERO)

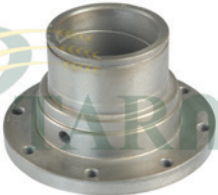
JD-0395



900 SERİSİ

Z10747
BATÖR KASNAK KAMALI POYRASI
(ÇELİK) - (DÖVME)

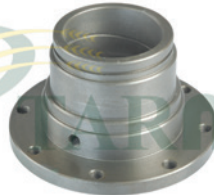
JD-0396



955-970-1055-1155

Z10768
BATÖR KAMALI POYRA YATAĞI
(PİK)

JD-0397



965-975-1065-1075-1174

Z10892
BATÖR KAMALI POYRA YATAĞI
(PİK)

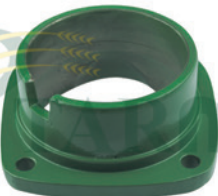
JD-0398



955-975-1155-1174

Z10746
TAMBUR KASNAK KAMALI POYRASI
(ÇELİK) - (DÖVME)

JD-0399



955-965-975-985

Z11118-Z10745
BATÖR VE TAMBUR RULMAN YATAĞI

JD-0400



630-955

H10740
DEBRİYAJ RULMAN YATAĞI

JD-0401



630-955

AZ32107-AZ19387
BORULU RULMAN YATAĞI



TARMO A.Ş.

JOHN DEERE

www.tarmo.com.tr

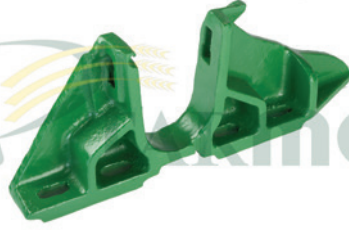
JD-0402



630-955

Z10813-Z10795
BOĞAZ BAĞLANTI YATAĞI
(SOL) - (SFERO)

JD-0403



630-955

Z10814-Z10794
BOĞAZ BAĞLANTI YATAĞI
(SAĞ) - (SFERO)

JD-0404



955-970-1055-1155

Z10128
SÜRTME RULMAN YATAĞI
(SFERO)

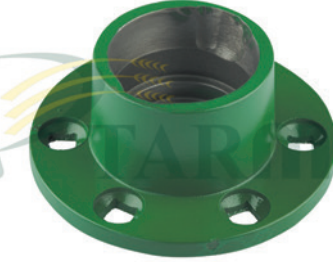
JD-0405



900-1000 SERİSİ

Z10017
BIÇAKKOLU RULMAN YATAĞI

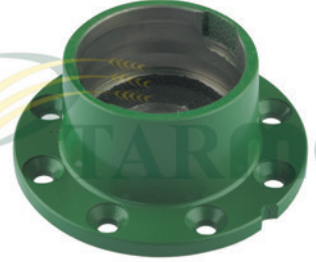
JD-0406



955-985-1055-1155

Z10682
BOĞAZ RULMAN YATAĞI
(ÇELİK)

JD-0407



1000 SERİSİ

Z12357-Z11498
BOĞAZ RULMAN YATAĞI - (8 DELİKLİ)
(ÇELİK) - (DQ 61762-CQ11904)

JD-0408



955

Z11085-Z10949
BIÇAKKOLU ALTIKÖŞELİ MİL KAPLINİ
(ÇELİK)

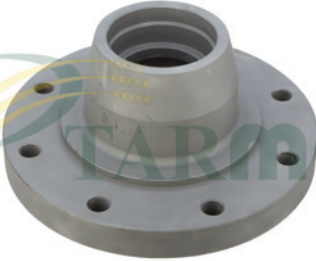
JD-0409



900-1000 SERİSİ

Z10852
ARKA TEKER POYRASI

JD-0410



2000-6000 SERİSİ

Z12481-Z12966
ARKA TEKER POYRASI

JD-0411



1000-4000 SERİSİ

AZ44805
BOĞAZ BAĞLANTI YATAĞI
(SOL)

JD-0412



1000-4000 SERİSİ

AZ44804
BOĞAZ BAĞLANTI YATAĞI
(SAĞ)

JD-0413



900 SERİSİ

Z10685
BIÇAKKOLU KASNAK YATAĞI



TARMO A.Ş.

JOHN DEERE

www.tarmo.com.tr

JD-0414



630-955

Z10031
DOLAP SAC KASNAK GÖBEĞİ

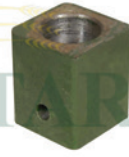
JD-0415



630-955

Z10632-Z10633
VİTES KOLU YATAĞI

JD-0416



630

Z22110
PATOZ GERGİ KASNAK YATAĞI
(DÖRTKÖŞE)

JD-0417



630

AZ10263
DOLAP UZATMA YATAĞI
(KÜÇÜK) - (SAĞ)

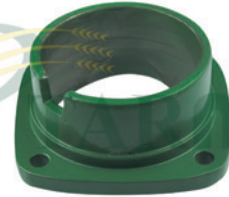
JD-0418



900-1000 SERİSİ

Z10893
SÜRTME RULMAN YATAĞI
(51118)

JD-0419



955-965-975-985

Z11331
BATÖR RULMAN YATAĞI

JD-4190



900-1000 SERİSİ

Z10975
DEBRİYAJ RULMAN YATAĞI

JD-0420



630-955

AH12465
YÜRÜTÜCÜ KASNAK ORTA GEZİCİ

JD-0421



630-955

Z11460-Z10646-H11442
YÜRÜTÜCÜ KASNAK YAN YAPRAK

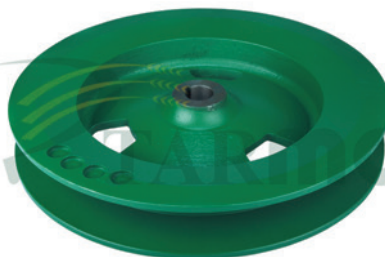
JD-0422



630-955

Z11035-Z10647
YÜRÜTÜCÜ KASNAĞI ORTA TOPU

JD-0423



630-955

Z11497
ŞANZİMAN KASNAĞI

JD-0424



955

Z11084-Z10950
KAMBUR KASNAK



JD-0425



955-975-1155-1174

Z10577-Z10747-Z10768
BATÖR KASNAĞI
(ÇELİK POYRALI) - (KOMPLE)

JD-0426



955-975-1155-1174

Z10577-Z10731
BATÖR KASNAĞI
(TEK KANAT)

JD-0427



955-970-1055-1155

Z10769-Z10489-Z10746
TAMBUR KASNAĞI
(ÇELİK POYRALI) - (KOMPLE)

JD-0428



955-970-1055-1155

Z10769
TAMBUR KASNAĞI
(V KAYIŞSIZ)

JD-0429



630-955

Z10489
TAMBUR KASNAĞI
(V KAYIŞLI) - (TEK TARAF)

JD-0430



900 SERİSİ

Z10086-Z10732
DOLAP DEVİR KASNAĞI
(ÜST) - (TAKIM) - (Z10729-Z10730)

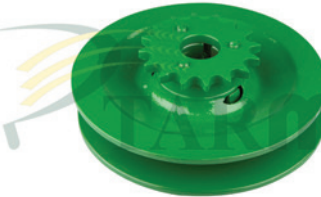
JD-0431



900 SERİSİ

Z10728-Z10731
DOLAP DEVİR KASNAĞI
(ALT) - (TAKIM) - (Z11168-Z11169)

JD-0432



630-955

Z10085-Z10676-Z30028
BEŞKASNAK
(DİŞLİLİ) - (TAKIM)

JD-0433



630-955

Z10079-Z10081
RÜZGARLIK DEVİR KASNAĞI
(TAKIM)

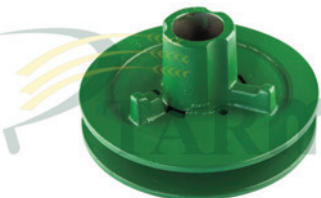
JD-0434



630-955

Z10083-Z10084
DOLAP DEVİR KASNAĞI
(ÜST) - (TAKIM)

JD-0435



630-955

Z10077-Z10078
DOLAP DEVİR KASNAĞI
(ALT) - (TAKIM)

JD-0436



630-955

AP24917
AVARA KASNAK
(RULMANLI) - (KÜÇÜK)



JD-0437



630-955

AN30569
AVARA KASNAK
(RULMANLI) - (BÜYÜK)

JD-0438



630-955

AP24917
AVARA KASNAK
(RULMANSIZ) - (KÜÇÜK)

JD-0439



630-955

AN30569
AVARA KASNAK
(RULMANSIZ) - (BÜYÜK)

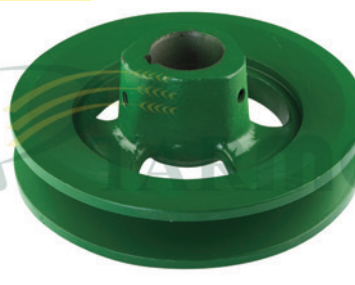
JD-0440



630-955

Z10726
KUYRUK MİLİ KASNAĞI

JD-0441



900 SERİSİ

Z10748
TAMBUR KASNAĞI
(KÜÇÜK)

JD-0442



630

Z10563
BIÇAKKOLU YARIKLI KASNAK

JD-0443



900 SERİSİ

Z10686
BIÇAKOLU DÖRT DELİKLİ KASNAK

JD-0444



1000-2000 SERİSİ

Z11818-Z12274
DOLAP DEVİR KASNAĞI
(ÜST) - (TAKIM)

JD-0445



630-955

Z10836
HİDROLİK POMPA KASNAĞI

JD-0446



630-955

Z10085-Z10676
BEŞKASNAK
(DİŞLİSİZ) - (TAKIM)

JD-0447



1100-1500 SERİSİ

Z11214-CQ27632
BEŞKASNAK
(RULMAN TAKILAN TARAF)

JD-0448



1100-1500 SERİSİ

Z11442-CQ27633
BEŞKASNAK
(DİŞLİ TAKILAN TARAF)



TARMO A.Ş.

JOHN DEERE

www.tarmo.com.tr

JD-0449



1100-1500 SERİSİ

Z11214-Z11442

BEŞKASNAK - (DİŞLİ DAHİL - KOMPLE)
(CQ 27632-CQ 27633)

JD-4490



900 SERİSİ

Z10887

BOĞAZDAN BİÇAKKOLUNA DEVİR
VEREN KASNAK

JD-4491



900 SERİSİ

Z10070

DEPO BOŞALTMA KASNAĞI

JD-4492



1000-7000 SERİSİ

Z11441

KAMBUR KASNAK

JD-4493



2000-2200 SERİSİ

Z63313

RÜZGARLIK KASNAĞI YAN YAPRAK

JD-4494



2000-2200 SERİSİ

Z58337

RÜZGARLIK KASNAĞI YAN YAPRAK

JD-4497



1000 SERİSİ

MOTORBAŞI KASNAĞI

JD-4498



630

Z10812

KAMBUR KASNAK
(BEŞKASNAK MİLİNDE)

JD-4499



950-955-960-970

AZ19443

PATOZ KASNAĞI
(GÖBEKSİZ)

JD-0450



900 SERİSİ

Z10399

BİÇAKKOLU EKSANTRİK DİŞLİ
(Z-20)

JD-0451



900 SERİSİ

Z10399

BİÇAKKOLU EKSANTRİK DİŞLİ
(Z-23)

JD-0452



900-1000 SERİSİ

Z10562

BİÇAKKOLU EKSANTRİK DİŞLİ
(Z-20) - (DAR DELİKLİ)



JD-0453



900-1000 SERİSİ

AZ31797-AZ28798
BIÇAKKOLU EKSANTRİK DİŞLİ
(Z-20) - (KAMALI)

JD-0454



1000 SERİSİ

Z11508
BIÇAKKOLU EKSANTRİK DİŞLİ
(Z-17) - (KAMALI) - (ASA 60 İÇİN)

JD-0455



630-955

Z11379-Z10011
BEŞİKKOLU EKSANTRİK DİŞLİ
(Z-33)

JD-0456



900-1000 SERİSİ

Z11541-Z11368
BEŞİKKOLU EKSANTRİK DİŞLİ
(Z-29) - (Z11382-Z11432)

JD-0457



1174-1166-1188

Z11690
BEŞİKKOLU EKSANTRİK DİŞLİ
(Z-33)

JD-0458



630-955

Z10025
SARSAK KRANK DİŞLİSİ
(Z-63) - (SFERO)

JD-0459



900-1000 SERİSİ

Z11176-Z11367
SARSAK KRANK DİŞLİSİ
(Z-54) - (SFERO)

JD-0460



955

Z10661
BIÇAKKOLU MİLİ DİŞLİSİ
(Z14) - (SIKMALI) - (ÇELİK)

JD-0461



955-975-1055-1155

Z30028
BEŞKASNAK ÜÇ DELİKLİ DİŞLİSİ
(Z-16)

JD-0462



630-955

AZ10272
BEŞKASNAK AVARA DİŞLİSİ
(Z-15) - (ÇELİK)

JD-0463



955

Z10849
ÖN HELEZON DİŞLİSİ
(Z-52) - (SFERO)

JD-0464



900-1000 SERİSİ

Z10884
ÖN HELEZON DİŞLİSİ
(Z-48) - (SFERO)



JD-0465



950-955-965-975

Z10815-Z11543
BOĞAZ GÖTÜRÜCÜ DİŞLİ
(Z-14) - (Ø 35mm)

JD-0466



950-955-965-975

Z10816-Z11544
BOĞAZ GÖTÜRÜCÜ DİŞLİ
(Z-14) - (Ø 40mm)

JD-0467



900-1000 SERİSİ

Z11046
BOĞAZ GÖTÜRÜCÜ DİŞLİ
(Z-11) - (Ø 35mm)

JD-0468



900-1000 SERİSİ

Z11047-Z11048
BOĞAZ GÖTÜRÜCÜ DİŞLİ
(Z-11) - (Ø 40mm)

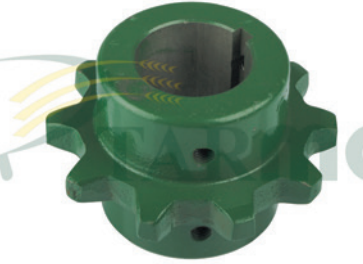
JD-0469



1000 SERİSİ

Z11649
BOĞAZ GÖTÜRÜCÜ DİŞLİ
(Z-14) - (Ø 35mm)

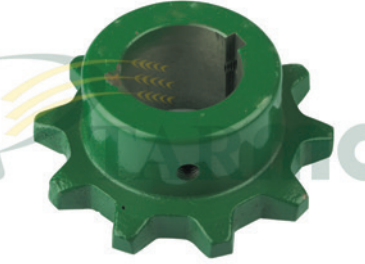
JD-0470



9000-CTS SERİSİ

H159614
BOĞAZ GÖTÜRÜCÜ DİŞLİ
(Z-10) - (Ø 50mm) - (ORTA)

JD-0471



9000-CTS SERİSİ

H159613
BOĞAZ GÖTÜRÜCÜ DİŞLİ
(Z-10) - (Ø 50mm) - (YAN)

JD-0472



1166-1174-1177-1450

CQ08997
BOĞAZ GÖTÜRÜCÜ DİŞLİ
(Z-13) - (KAMALI)

JD-0473



1166-1174-1177-1450

CQ08996
BOĞAZ GÖTÜRÜCÜ DİŞLİ
(Z-13) - (PİMLİ)

JD-0474



630-955

Z10997-Z10032
ELEVATÖR KOVA DİŞLİ
(Z-8) - (Ø 25mm)

JD-0475



900-1000 SERİSİ

Z10886
ELEVATÖR KOVA DİŞLİ
(Z-8) - (Ø 30mm)

JD-0476



900-1000 SERİSİ

Z10955
ELEVATÖR KOVA DİŞLİ
(Z-20)



JD-0477



1000 SERİSİ

Z11689
SARSAK KRANK DİŞLİSİ
(Z-31)

JD-0479



1055-1155-1157-1158

Z11462
ELEVATÖR KOVA DİŞLİ
(Z-16)

JD-0480



1000-2000 SERİSİ

CD00901
ELEVATÖR DİŞLİSİ
(Z-7) - (Ø 25mm)

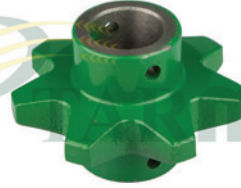
JD-0481



1000-2000 SERİSİ

S02083
ELEVATÖR DİŞLİSİ
(Z-7) - (Ø 30mm)

JD-0482



1000 SERİSİ

CQ19071
ELEVATÖR DİŞLİSİ
(Z-7) - (Ø 35mm)

JD-0483



9000 SERİSİ

H177988
ELEVATÖR DİŞLİSİ
(Z-8) - (Ø 30mm)

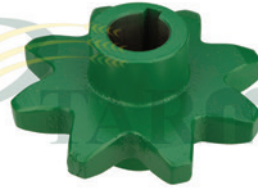
JD-0484



1185-1450-1550

Z11212
ELEVATÖR DİŞLİSİ
(Z-8) - (Ø 25mm)

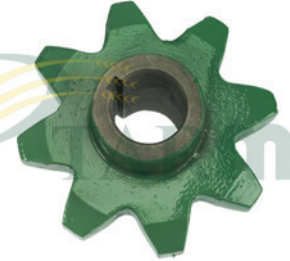
JD-0485



1185-1450-1550

CQ21853
ELEVATÖR DİŞLİSİ
(Z-8) - (Ø 30mm)

JD-0486



1185-1450-1550

CQ21495
ELEVATÖR DİŞLİSİ
(Z-8) - (Ø 35mm)

JD-0487



900-1000 SERİSİ

Z10398
HELEZON AVARA DİŞLİ
(Z-18)

JD-4088



900-1000 SERİSİ

Z10117
KASARCIK DİŞLİSİ
(Z-16)

JD-4089



900-1000 SERİSİ

H134603
ELEVATÖR KOVA DİŞLİSİ
(Z-8) - (ALTIKÖŞELİ)



JD-4090



1000 SERİSİ

Z11443
BEŞKASNAK DİŞLİSİ
(Z-14)

JD-4091



900-1000 SERİSİ

AH15303
KASARCIK AVARA DİŞLİSİ
(Z-11) - (ASA 2040 İÇİN)

JD-4092



1000-2000 SERİSİ

CQ05889
BEŞİKKOLU EKSANTRİK DİŞLİ
KARŞILIĞI - (Z-13)

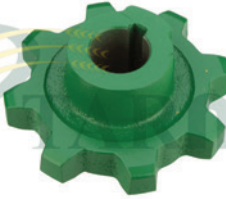
JD-4093



9000-CTS SERİSİ

H133143
ELEVATÖR DİŞLİSİ
(Z-8) - (Ø 35mm)

JD-4094



9000-CTS SERİSİ

H164796
ELEVATÖR DİŞLİSİ
(Z-8) - (Ø 30mm)

JD-4095



900-1000 SERİSİ

Z11475
ELEVATÖR DİŞLİSİ
(Z-32) - (TANE)

JD-4096



900-1000 SERİSİ

Z10883
ELEVATÖR DİŞLİSİ
(Z-26) - (6 DELİKLİ)

JD-4097



630-955

AZ10494
DEPO BOŞALTICI DİŞLİ
(Z-56) - (ÇELİK)

JD-4098



900 SERİSİ

Z20104
DEPO BOŞALTICI DİŞLİ
(Z-13)

JD-4099



1000 SERİSİ

Z11648
BOĞAZ GÖTÜRÜCÜ DİŞLİ
(Z-14) - (Ø 40mm)

JD-4100



1100 SERİSİ

Z11514
BOĞAZ GÖTÜRÜCÜ DİŞLİ
(Z-13) - (KAMASIZ)

JD-4101



1100 SERİSİ

Z11515
BOĞAZ GÖTÜRÜCÜ DİŞLİ
(Z-13) - (KAMALI)



JD-4102



900-1000 SERİSİ

Z30556
BOĞAZ KAPLIN DİŞLİ
(Z-33)

JD-4103



900-1000 SERİSİ

Z39311
BOĞAZ KAPLIN DİŞLİ
(Z-51)

JD-4104



900-1000 SERİSİ

Z30555
BOĞAZ KAPLIN DİŞLİ
(Z-55)

JD-4105



900-1000 SERİSİ

Z27681
DOLAP ARA MİLİ DİŞLİSİ
(Z-13)

JD-4106



900-1000 SERİSİ

Z27685
DOLAP ARA MİLİ DİŞLİSİ
(Z-21)

JD-4107



900-1000 SERİSİ

Z30701
DOLAP ÇEVİRİCİ DİŞLİ
(Z-68) - (4 DELİKLİ)

JD-4108



900-1000 SERİSİ

Z10024
SARKAK KRANK DİŞLİSİ
(Z-63) - (Ø 25mm) - (SFERO)

JD-4109



900-1000 SERİSİ

Z38056
BEŞKASNAK DİŞLİSİ
(Z-14) - (ASA 60 İÇİN)

JD-4110



630

Z10400
HELEZON DİŞLİSİ
(Z-52)

JD-4111



630-955

Z20101
DOLAP ARA MİL DİŞLİSİ
(Z-16)

JD-4112



1174-1177

Z11699
BEŞKASNAK DİŞLİSİ
(Z-16) - (ASA 60 İÇİN) - (SULU)

JD-0488



900-1000 SERİSİ

AZ20402
BİÇAKKOLU ALTIKÖŞELİ DİŞLİLİ MİL
(370mm)



TARMO A.Ş.

JOHN DEERE

www.tarmo.com.tr

JD-0489



900-1000 SERİSİ

AZ24206
BIÇAKKOLU ALTIKÖŞELİ DİŞLİLİ MİL
(500mm)

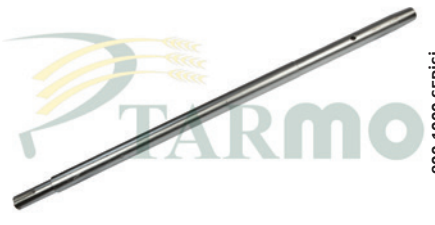
JD-0490



900-1000 SERİSİ

AZ36926-AZ33655
BIÇAKKOLU ALTIKÖŞELİ DİŞLİLİ MİL
(680mm)

JD-0492



900-1000 SERİSİ

Z29639-Z29642
BIÇAKKOLU MİLİ
(Ø 40mm) - (1065mm) - (KALIN)

JD-0493



900-1000 SERİSİ

Z30990
BEŞİK MİLİ
(1235mm)

JD-0494



900 SERİSİ

Z32102-Z30031
BEŞ KASNAK MİLİ
(YENİ MODEL)

JD-0495



900 SERİSİ

AZ20121
SAĞIR ELEK MİLİ
(DÖRTKÖŞE)

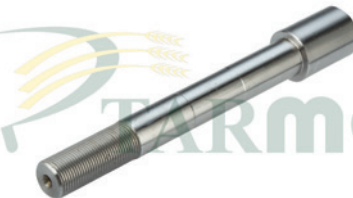
JD-0496



950-960-970-980

AZ28485
SAĞIR ELEK MİLİ
(DÖRTKÖŞE)

JD-0497



900-1000 SERİSİ

H33461-Z36073
BIÇAKKOLU VALS YATAK MİLİ
(204mm)

JD-0498



900-1000 SERİSİ

Z33438
BOĞAZ GÖTÜRÜCÜ ARKA MİLİ
(Ø 40mm)

JD-0499



900-1000 SERİSİ

Z33439
BOĞAZ GÖTÜRÜCÜ ARKA MİLİ
(Ø 35mm)

JD-0500



6 SARSAKLI BIÇERLER

AZ30679
SAĞIR ELEK MİLİ
(1670mm) - (YUVARLAK)

JD-0501



900-1000 SERİSİ

Z30813
BATÖR MİLİ
(1475mm) - (Ø 50mm)

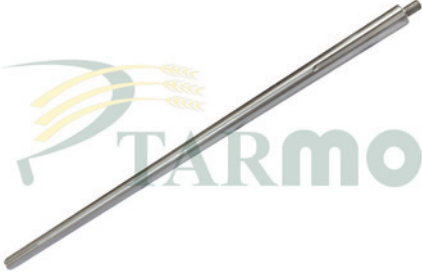


TARMO A.Ş.

JOHN DEERE

www.tarmo.com.tr

JD-0502



900-1000 SERİSİ

AZ20540
TAMBUR MİLİ
(1580mm) - (Ø 50mm)

JD-0503



630

AH19837
VİTES HİLAL MİLİ
(292mm) - (KISA)

JD-0504



630

AH19838
VİTES HİLAL MİLİ
(313mm) - (UZUN)

JD-0505



955

Z38012
VİTES HİLAL MİLİ
(262mm) - (KISA)

JD-0506



955

Z32602
VİTES HİLAL MİLİ
(298mm) - (UZUN)

JD-0507



900-1000 SERİSİ

AZ19160-AZ26904
HELEZON MİLİ
(400mm) - (FLANŞLI) - (SOL TARAF)

JD-0508



900 SERİSİ

Z32893
DOLAP KÖRÜK KASNAK MİLİ
(KONİK)

JD-0509



1000 SERİSİ

Z42033-CQ48466
TAMBUR MİLİ
(FREZELİ)

JD-5010



975-1075-1174-1177

Z41242-Z38444
BEŞİK MİLİ
(Ø 35mm) - (149cm)

JD-5011



1170-1174

BİÇAKKOLU MİLİ
(140cm)

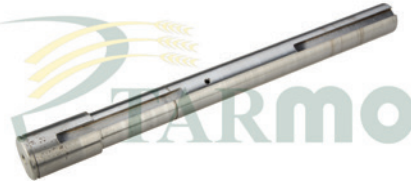
JD-5012



1000-2000 SERİSİ

Z45322-Z54071
DOLAP KASNAK MİLİ

JD-5013



1165-1170-1450-7700

CQ05891
BEŞKASNAK MİLİ



TARMO A.Ş.

JOHN DEERE

www.tarmo.com.tr

JD-5014



PAMUK TOPL. MAK.

PAMUK TOPLAMA MAKİNASI MİLİ
(ŞAPKALI) - (ALTİKÖŞELİ)

JD-5015



PAMUK TOPL. MAK.

PAMUK TOPLAMA MAKİNASI MİLİ
(Z-21) - (477mm)

JD-5016



PAMUK TOPL. MAK.

PAMUK TOPLAMA MAKİNASI MİLİ
(Z-26 / 19) - (319mm)

JD-5017



PAMUK TOPL. MAK.

PAMUK TOPLAMA MAKİNASI
MAHRUTİ DİŞLİ - (Z-40 / 21)

JD-5018



PAMUK TOPL. MAK.

PAMUK TOPLAMA MAKİNASI DÜZ
DİŞLİSİ - (Z-31 / 26)

JD-5019



900-1000 SERİSİ

Z20162
KÖRÜK MİLİ
(1305mm)

JD-5020



900 SERİSİ

Z26815
DEPO BOŞALTMA MİLİ
(UZUN)

JD-5021



900 SERİSİ

Z20734
ÜST KESMİK ELEVATÖR MİLİ
(KONİK)

JD-5022



900-1000 SERİSİ

Z20696
ÜST ELEVATÖR MİLİ

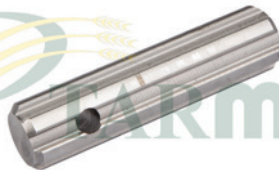
JD-5023



900-1000 SERİSİ

Z40190
RÜZGARLIK MİLİ

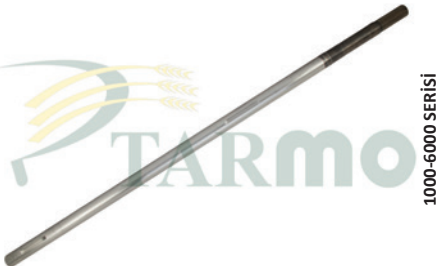
JD-5024



1000 SERİSİ

Z42970
HELEZON BOŞALTICI MİLİ

JD-5027



1000-6000 SERİSİ

CQ14623
BATÖR MİLİ
(171,50cm)



TARMO A.Ş.

JOHN DEERE

www.tarmo.com.tr

JD-5028



1000-5000 SERİSİ

AZ42085
HİDROSTATİK MİLİ
(ALT)

JD-5030



1450-1550

CQ45455-CQ63459
BOĞAZ MİLİ
(176,80cm)

JD-5031



900-1000 SERİSİ

Z30137
BOĞAZ GÖTÜRÜCÜ MİLİ
(ÖN)

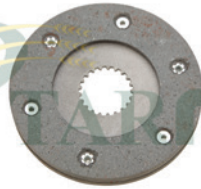
JD-5032



1000 SERİSİ

Z53258
BOĞAZ MİLİ
(178cm)

JD-0510



630-955

AZ28508-AH21835
EL FREN BALATASI

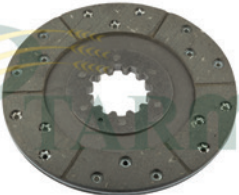
JD-0511



630-955

AZ20844
AYAK FREN BALATASI

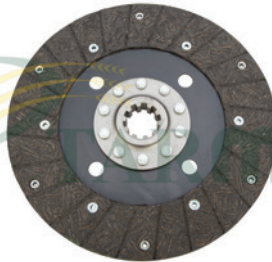
JD-0512



1170-1174-1177

AZ42254
AYAK FREN BALATASI

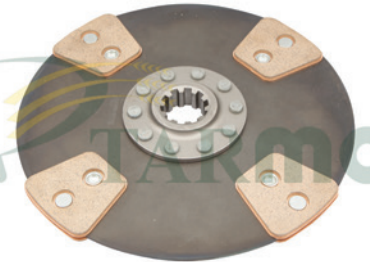
JD-0513



630-955

AH12305
DEBRİYAJ BALATASI
(TRAKPAR)

JD-0514



630-955

AH65439
DEBRİYAJ BALATASI
(BRONZ) - (TRAKPAR)

JD-0515



955 SÜPER

AZ40096
DEBRİYAJ BALATASI
(TRAKPAR)

JD-0516



630-955

T11701
DEBRİYAJ BASKI AYAĞI

JD-0517



955 SÜPER

AH86586
DEBRİYAJ BASKI AYAĞI



TARMO A.Ş.

JOHN DEERE

www.tarmo.com.tr

JD-0518



630-955

T11700
DEBRİYAJ BASKI AYAĞI PİMİ

JD-0519



T17911
DEBRİYAJ BASKI AYAĞI YAYI

JD-0520



630-955

T13267
DEBRİYAJ BASKI AYAĞI
(TIRNAĞI SULU) - (SAC)

JD-0521



955 SÜPER

AH86586
DEBRİYAJ BASKI AYAĞI PİMİ

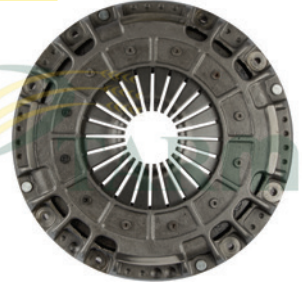
JD-0522



630-955

AH65440
DEBRİYAJ BASKISI
(KOMPLE)

JD-0523



1174-1170-8080

AZ36712
DEBRİYAJ BASKISI
(ŞEMSIYELİ) - (KOMPLE)

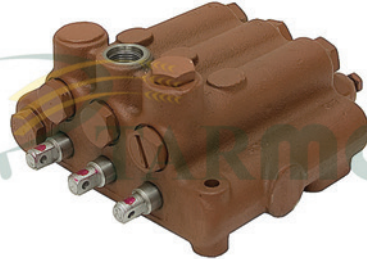
JD-0524



BÜTÜN MODELLER

AM3983T
DEBRİYAJ RULMANI
(2256-31)

JD-0530



630-955

AZ33489
ANA MERKEZ
(OEM) - (KOMPLE)

JD-0531



630-955

AZ19692-AZ62124
HİDROLİK POMPA
(CESSNA TİPİ)

JD-0532



630-955

AZ19692-AZ62124
HİDROLİK POMPA
(CESSNA TİPİ) - (TAKVİYELİ)

JD-0533



1174

AZ36555
HİDROLİK POMPA
(KOMPLE) - (İTHAL)

JD-0534



1155-1157-1158

AZ32157
HİDROLİK POMPA
(TEKLİ) - (BOSCH REXROTH)



JD-0535



1155-1157-1158

AZ32157
HİDROLİK POMPA
(TEKLİ) - (İTHAL)

JD-0538



1174-1177

AZ36555
HİDROLİK POMPA
(İKİLİ) - (İTHAL)

JD-0539



630-955-1075-1085

AZ25773
DİREKSİYON BEYİNİ
(DANFOSS)

JD-5390



630-955

AZ22843
TABLA TÜPÜ
(55 BAR) - (BOSCH REXROTH)

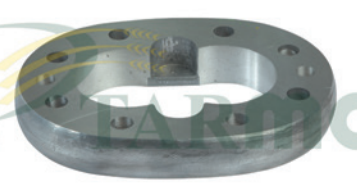
JD-5391



630-955

AZ22843
TABLA TÜPÜ
(75 BAR) - (BOSCH REXROTH)

JD-5392



955

Z31040
HİDROLİK POMPA ARA BLOK

JD-5393



955

AZ17510-AT12109
HİDROLİK POMPA DİŞLİSİ
(UZUN) - (TAKIM)

JD-5394



630

AZ12904-AZ12905
HİDROLİK POMPA DİŞLİSİ
(KISA) - (TAKIM)

JD-0540



630-955

Z32540
RADYATÖR HORTUMU
(ALT)

JD-0541



630-955

Z35156
RADYATÖR HORTUMU
(ÜST)

JD-0542



630-955

Z28156
HİDROLİK DOLDURMA HORTUMU

JD-0543



630-955

Z36936
HAVA HORTUMU
(KONİK) - (BÜYÜK)



TARMO A.Ş.

JOHN DEERE

www.tarmo.com.tr

JD-0544



630

Z32509
HAVA HORTUMU
(KONİK) - (KÜÇÜK)

JD-0545



630-955

Z32506
HAVA HORTUMU
(DÜZ) - (BÜYÜK)

JD-0546



955

Z32740
HAVA HORTUMU
(DİRSEKLİ) - (BÜYÜK)

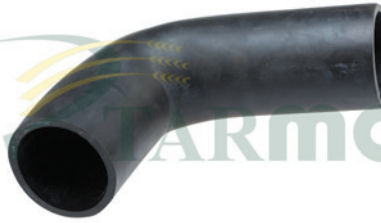
JD-0547



955

Z33077
HAVA HORTUMU
(YASSI DİRSEK) - (BÜYÜK)

JD-0548



955

Z32741
HAVA HORTUMU
(DİRSEKLİ) - (OVAL)

JD-0549



630

Z23900
PERKİNS RADYATÖR HORTUMU
(ALT)

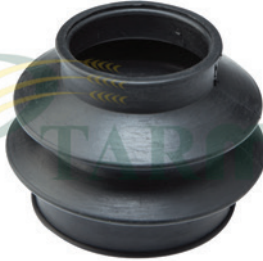
JD-0550



630-955

T22942
MOTOR YAĞ SOĞUTUCU L
HORTUMU

JD-0551



630

Z27776
BATÖR KASNAK TOZ KÖRÜĞÜ

JD-0552



955

Z31034
BATÖR KASNAK TOZ KÖRÜĞÜ

JD-0553



630-955

AZ16272
HİDROLİK POMPA HORTUMU
(SİRAL)

JD-0554



630-955

AZ16228
HİDROLİK DİREKSİYON HORTUMU
(SİRAL)

JD-0555



630-955

AZ15362
HİDROLİK TABLA HORTUMU
(SİRAL)



TARMO A.Ş.

JOHN DEERE

www.tarmo.com.tr

JD-0556



630

AZ12913
HİDROLİK TIRMIK HORTUMU
(SİRAL)

JD-0557



630

AZ13632
HİDROLİK ŞIK ŞIK HORTUMU

JD-0558



630

AZ17901
HİDROLİK MERKEZ SİRAL
HORTUMU

JD-0559



630

AZ22062-AZ22063
HİDROLİK HIZ PİSTON HORTUMU
(193cm)

JD-0560



630-955

AZ16885-RE16668
KARTER BOŞALTIM HORTUMU

JD-0561



955

AZ23782-AZ23783
HİDROLİK HIZ PİSTON HORTUMU
(193cm)

JD-0562



955

AZ22243
HİDROLİK TIRMIK HORTUMU
(82cm)

JD-0563



955

AZ22244
HİDROLİK TIRMIK HORTUMU
(62cm)

JD-0564



900-1000 SERİSİ

Z34788-Z37188
RADYATÖR HORTUMU
(ALT)

JD-0565



900-1000 SERİSİ

Z37638
HAVA HORTUMU
(KONİK)

JD-0570



630-955

03M7085
ZIPKA CİVATASI
(KISA)

JD-0571



630-955

03M7087
ZIPKA CİVATASI
(UZUN)



JD-0572



630-955

09M7003
ÖN BOĞAZ CİVATASI

JD-0573



630

Z40205
SARSAK KRANK YATAĞI CİVATASI

JD-0574



630-955

19M7555
BEŞ KASNAK DİŞLİ CİVATASI
(İNBUS)

JD-0575



630

Z34488
ÖN BİJON
(BÜYÜK SOMUNLU)

JD-0576



955

Z36742
ÖN BİJON
(BÜYÜK SOMUNLU)

JD-0577



630-955

H20336
ARKA TEKER BİJONU

JD-0578



630-955

Z30687
YAY GERDİRME CİVATASI
(İNCE)

JD-0579



630-955

Z26264
YAY GERDİRME CİVATASI
(KALIN)

JD-0580



630-955

19M7162
HELEZON SAC CİVATASI
(M8x16mm)

JD-0581



630-900 SERİSİ

37M7015
HELEZON SAC CİVATASI
(M8x20mm)

JD-0582



630-955

03M7093
HELEZON SAC CİVATASI
(M8x25mm)

JD-0583



630-955

19M7288
HELEZON SAC CİVATASI
(M8x30mm)



TARMO A.Ş.

JOHN DEERE

www.tarmo.com.tr

JD-0584



630-955

03M7071
HELEZON SAC CİVATASI
(M8x45mm)

JD-0585



630-955

16M2524
BIÇAK PERÇİNİ
(6x15mm) - (KISA) - (1 kg)

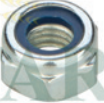
JD-0586



630-900 SERİSİ

16M4666
BIÇAK PERÇİNİ
(6x24mm) - (UZUN) - (1 kg)

JD-0587



630-955

14M7140
CİVATA SOMUNU
(KONTRALI)

JD-0588



BÜTÜN MODELLER

H158341-14M7303
BIÇAK CİVATASI
(M6x16) - (ORİJİNAL SOMUNLU)

JD-0600



630-955

TURBO TOZ FİLTRESİ KOMPLE
(BİÇER)

JD-0601



2030-2130-2040

TURBO TOZ FİLTRESİ KOMPLE
(TRAKTÖR)

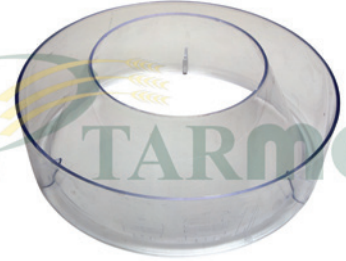
JD-0602



630-955

AH85336
HAVA FİLTRE BACASI
(SAC)

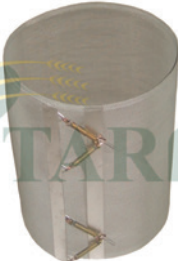
JD-0603



630-955

L28519
HAVA FİLTRE TOZ TASI

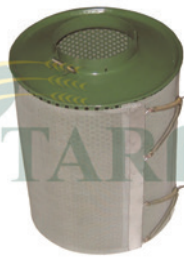
JD-0604



630-955

AR27808
HAVA FİLTRE KAFES TELİ

JD-0605



630-955

AR46067
HAVA FİLTRE KAFES SACI
(TELİ İLE KOMPLE)

JD-0606



630-955

AH21283
HAVA FİLTRE KAZANI
(KOMPLE)



JD-0607



630-955

AR50041
CAMLI MAZOT FİLTRESİ
(ORİJİNAL - USA)

JD-0608



630-955

AZ15812
HİDROLİK DEPO FİLTRESİ

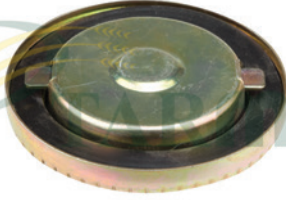
JD-0609



630-955

AZ32294
MAZOT DEPO SÜZGEÇİ

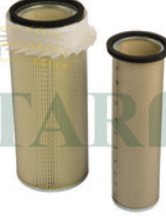
JD-0610



BÜTÜN MODELLER

99M7013
MAZOT DEPO KAPAĞI

JD-0611



955-965-1055-1155

AZ20625-AZ25867
HAVA FİLTRESİ
(İÇ VE DIŞ ÜNİTE)

JD-0612



630-950

AR36044
HAVA FİLTRESİ

JD-0613



975

AZ26091-AZ26007
HAVA FİLTRESİ
(İÇ VE DIŞ ÜNİTE)

JD-0614



975

AZ23642
HAVA FİLTRESİ

JD-0615



955

AH85336
HAVA FİLTRE BACASI
(ALÜMİNYUM)

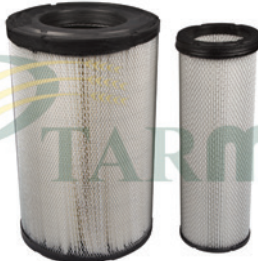
JD-0616



955

Z29121
RADYATÖR KAPAĞI

JD-0618



1450-1550

DQ64432-DQ64433
HAVA FİLTRESİ
(İÇ VE DIŞ ÜNİTE)

JD-0619



TRAKTÖR

AR58956
YAĞ FİLTRESİ
(ZP 503 A)



TARMO A.Ş.

JOHN DEERE

www.tarmo.com.tr

JD-0635



955-975-1174-7700

AZ18762
FREN MERKEZİ
(SOL) - (AZ30204)

JD-0636



955-975-1174-7700

AZ18763
FREN MERKEZİ
(SAĞ) - (AZ30204)

JD-0637



BÜTÜN MODELLER

Z30219
FREN MERKEZ KÖRÜĞÜ

JD-0638



BÜTÜN MODELLER

L31793
ISTAVROZ PULU

JD-0639



630-955

Z53354
AKS DİŞLİ PULU
(GENİŞ DELİK)

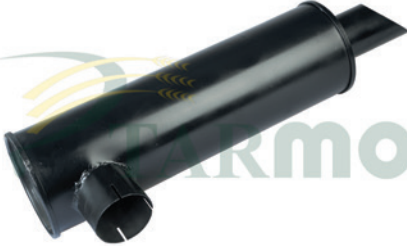
JD-0640



630-955

L31792
AKS DİŞLİ PULU
(DAR DELİK)

JD-0641



630

AZ15680
EGZOZ
(EMAYE)

JD-0642



955

AZ20007
EGZOZ
(EMAYE)

JD-0643



955 SÜPER

AZ30385
EGZOZ
(EMAYE)

JD-0644



900-1000 SERİSİ

Z12103
HELEZON SİGORTA YATAĞI

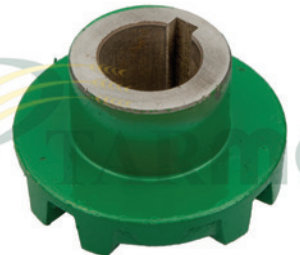
JD-0645



BÜTÜN MODELLER

Z10037
HELEZON KAVRAMA YATAĞI
(İKİ UCU YARIKLI)

JD-0646

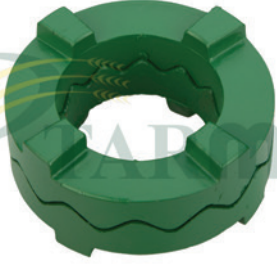


900-1000 SERİSİ

Z10033-Z10797
HELEZON KAVRAMA GÖBEĞİ
(ORTASI YUVARLAK)



JD-0647



900-1000 SERİSİ

Z699H

HELEZON KAVRAMA SİGORTASI
(KÜÇÜK) - (TAKIM)

JD-0648

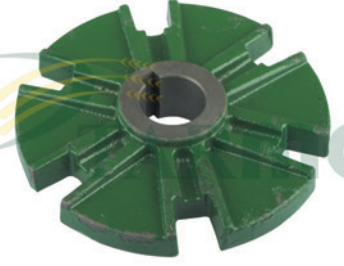


900 SERİSİ

Z10847

HELEZON KAVRAMA SİGORTASI
(BÜYÜK) - (TEK) - (SFERO)

JD-0649



900 SERİSİ

Z10889

HELEZON KAVRAMA GÖBEĞİ
(Ø 30mm) - (3 KANAT)

JD-0650



900 SERİSİ

Z10846

HELEZON KAVRAMA GÖBEĞİ
(Ø 30mm) - (6 KANAT)

JD-0651



900-1000 SERİSİ

Z11509

HELEZON KAVRAMA GÖBEĞİ
(3 KANAT)

JD-0652



1174-1450

HELEZON KAVRAMA GÖBEĞİ
(Ø 35mm) - (6 KANAT)

JD-0653

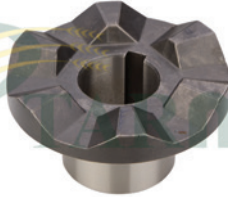


1000-2000 SERİSİ

Z11338

HELEZON SİGORTA YATAĞI
(GÖBEKLİ TARAF)

JD-0654



1000-2000 SERİSİ

Z11337

HELEZON SİGORTA YATAĞI
(UZUN - GÖBEKLİ)

JD-0655



1000-2000 SERİSİ

Z11687-Z11437

HELEZON SİGORTA YATAĞI
(ÇENELİ TARAF)

JD-0656

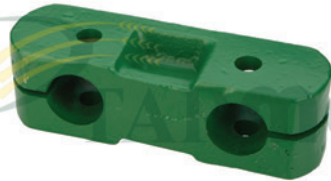


1000-2000 SERİSİ

Z11435

HELEZON SİGORTA TOPLAMA YATAĞI
(DIŞLILI)

JD-0657



900-1000 SERİSİ

Z10114-Z10579

HELEZONUN İÇİNDEKİ 2 DELİKLİ
YATAK

JD-0658



900-1000 SERİSİ

Z10904

MOTORBAŞI KOVANI
(MEKANİK MAKİNALARA)



JD-0659



900-1000 SERİSİ

Z11174
MOTORBAŞI KOVANI
(HİDROSTATİK MAKİNALARA)

JD-0660



630-955

AZ10539
BOŞALTICI HELEZON MERKEZİ
KAVİSLİ YATAĞI

JD-0662



630-955

Z11376-Z10010
BEŞİK EKSANTRİĞİ
(Ø 25mm)

JD-0663



1174-1166-1188

Z11696
BEŞİK EKSANTRİĞİ
(Ø 30mm)

JD-0664



900 SERİSİ

Z10857
BEŞ KASNAK LEVYE ÇATALI
(KISA)

JD-0665



900 SERİSİ

Z10150
DOLAP KASNAK LEVYE ÇATALI
(UZUN)

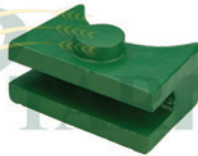
JD-0666



1000-2000 SERİSİ

Z11358
DOLAP KASNAK LEVYE ÇATALI

JD-0667



900-1000 SERİSİ

H10835
BOĞAZ BAĞLANTI YATAĞI PABUCU
(SFERO)

JD-0668



900-1000 SERİSİ

Z20916
BOĞAZ BAĞLANTI KAMASI - L

JD-0669



900-1000-7000-SERİSİ

AZ19242
BEŞİK LASTİK YATAĞI
(4 DELİKLİ) - (ÇELİK)

JD-0670



900-1000 SERİSİ

AZ17705
BEŞİĞİ SALLAYAN KOL
(TEK TARAF) - (SOL)

JD-0671



900-1000 SERİSİ

AZ17704
BEŞİĞİ SALLAYAN KOL
(ÇİFT TARAF) - (SAĞ)



JD-0672



630-955

PK1043H
SAĞIR ELEK KEPİ
(ÇİFT TARAF)

JD-0673



630-955

PK1103H
SAĞIR ELEK KEPİ
(TEK TARAF)

JD-0674



630-955

PK1931H
SAĞIR ELEK KEPİ
(SIRTI DÜZ)

JD-0675



630-955

Z10418
SAĞIR ELEK KEPİ
(YÜKSEK)

JD-0676



955-965-975-985-1174

Z10634
SAĞIR ELEK KEPİ
(KÜÇÜK)

JD-0677



955-965-975-985-1174

Z10639
SAĞIR ELEK KEPİ
(BÜYÜK)

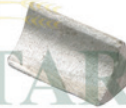
JD-0678



1000-6000 SERİSİ

Z11374
SAĞIR ELEK KEPİ
(4 DELİKLİ)

JD-0679



900-1000 SERİSİ

H10613
SAĞIR ELEK KEP TIRNAĞI

JD-0680



900-1000 SERİSİ

H11443-Z11486
BIÇAKKOLU SIKTIRMA PABUCU
(TAKIM)

JD-0681



900-1000 SERİSİ

H10032
DEBRİYAJ AYNASI
(DİSK)

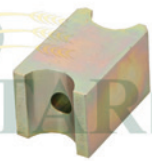
JD-0682



900-1000 SERİSİ

Z11015
DEBRİYAJ ARKA PLAKASI
(3 KULAKLI)

JD-0683



1000 SERİSİ

Z39484
HELEZON KRANK YATAĞI
(DÖRTKÖŞE)



TARMO A.Ş.

JOHN DEERE

www.tarmo.com.tr

JD-0684



955

Z30245
GÖTÜRÜCÜ ZİNCİR YATAĞI
(AHŞAP)

JD-0685



900-1000 SERİSİ

Z21392
MOTORBAŞI SACLI DİSK PERNOSU

JD-0686



630-955

Z20073
BATÖR ŞİŞİ

JD-0687



630-955

Z20478
TIRMIK YAYI

JD-0688



1450-6000 SERİSİ

Z56957-CQ27647
TIRMIK YAYI

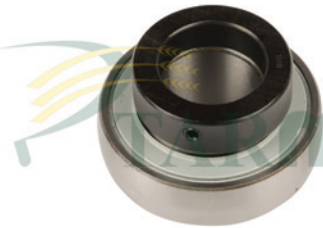
JD-0689



1450-6000 SERİSİ

Z56958-CQ27648
TIRMIK YAYI

JD-0690



955

AZ19432
BATÖR RULMANI

JD-0691



630-955

AZ30319
ANA MERKEZ KUMANDA MİLİ

JD-0692



900-1000 SERİSİ

Z10714
DEBRİYAJ FÖTR KOVANI

JD-0693



900-1000 SERİSİ

Z10104
MOTOR KUYRUK MİLİ FÖTRÜ

JD-0696



BÜTÜN MODELLER

AS01197
ÇELTİK PALET MAKARASI
(D4) - (KOMPLE)

JD-0697



BÜTÜN MODELLER

AS01197
ÇELTİK PALET YÜRÜTÜCÜ MAKARA
YATAK BURCU

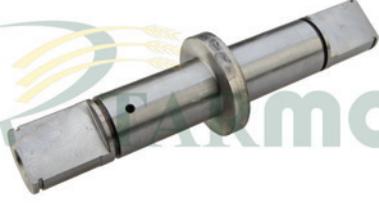


TARMO A.Ş.

JOHN DEERE

www.tarmo.com.tr

JD-0702



BÜTÜN MODELLER

CQ26471

ÇELTİK PALET YÜRÜTÜCÜ MAKARA
MİLİ - (FLANŞLI)

JD-0703

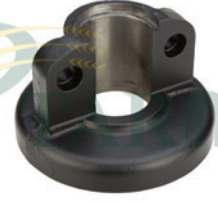


BÜTÜN MODELLER

S01193

ÇELTİK PALET YÜRÜTÜCÜ MAKARA
MİL YATAĞI - (BURÇLU)

JD-0704



BÜTÜN MODELLER

S01349

ÇELTİK PALET YÜRÜTÜCÜ MAKARA
YATAK KEPİ

JD-0705



630-955

AZ20246

DOLAP YILDIZI
(YENİ MODEL)

JD-0706



630-930-940

AZ12676

DOLAP YILDIZI
(BURÇLU) - (ESKİ MODEL)

JD-0707



630-955

AZ10328

BOĞAZ KASNAĞI
(YEŞİL BOYALI) - (SAC)

JD-0708



630-955

AZ10163

KELEBEK KASNAK
(SARI BOYALI) - (SAC)

JD-0709

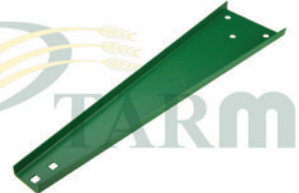


630-955

Z20474

DOLAP U SACI

JD-0710



900-1000 SERİSİ

Z22124

DOLAP DİREK SACI

JD-0711

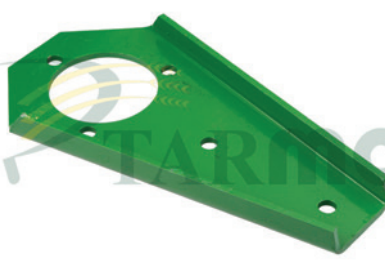


900-1000 SERİSİ

AZ25769-Z36806

BEŞİĞİ SALLAYAN ÇATAL
(PERÇİNLİ)

JD-0712



900-1000 SERİSİ

Z29076

BEŞİĞİ SALLAYAN SAC
(PERÇİNLİ)

JD-0713



900-1000 SERİSİ

Z20171

BEŞİĞİ SALLAYAN LAMA



TARMO A.Ş.

JOHN DEERE

www.tarmo.com.tr

JD-0714



900-1000 SERİSİ

AZ17693
BEŞİĞİ SALLAYAN LAMA
(SAC) - (KOMPLE)

JD-0715



1000 SERİSİ

Z38442-Z38443
BEŞİĞİ SALLAYAN ÇATAL VE PİM
(TAKIM)

JD-0717



BÜTÜN MODELLER

AZ34208-AZ59818
SAP KALDIRICI

JD-0718



2000 SERİSİ

Z64658
TABLA SENSÖR BANT

JD-0719



BÜTÜN MODELLER

H171395
TABLA SAC BANT

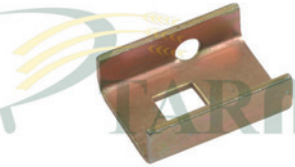
JD-0721



900-1000 SERİSİ

Z32191
TIRMIK FİBER KORUYUCU SACI

JD-0722



900-1000 SERİSİ

Z20480
TIRMIK YAYI TUTUCU SACI

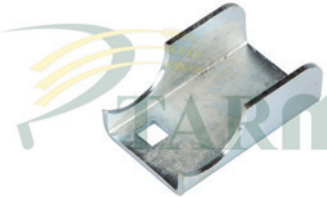
JD-0723



1170-1174-1450-1550

CQ30987
TIRMIK YAYI TUTUCU SACI
(SAĞ)

JD-0724



1170-1174-1450-1550

CQ30988
TIRMIK YAYI TUTUCU SACI
(SOL)

JD-0725



630-900 SERİSİ

Z32690
BIÇAK ÜST BASKISI

JD-0726



630-955

Z32049
BIÇAK ALT BASKISI

JD-0727



630-955

Z25258
BIÇAK ALT ŞİMİ



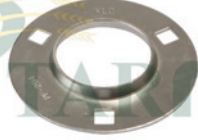
JD-0728



630-955

AZ10248-DQ57927
YAYLI KUTU
(DOLU)

JD-0729



630-955

Z31371
RULMAN SAC KAPAĞI
(YUVARLAK) - (20'LİK) - PF204

JD-0730



630-955

P47232
RULMAN SAC KAPAĞI
(YUVARLAK) - (25'LİK) - PF205

JD-0731



630-955

Z34740-P44439
RULMAN SAC KAPAĞI
(YUVARLAK) - (30'LUK) - PF206

JD-0732



630-955

Z30769
RULMAN SAC KAPAĞI
(YUVARLAK) - (35'LİK) - PF207

JD-0733



630-955

Z44269
RULMAN SAC KAPAĞI
(YUVARLAK) - (40'LİK) - PF208

JD-0734



630-955

Z31372
RULMAN SAC KAPAĞI - (OVAL)
(2 DELİKLİ) - (20'LİK) - PFL204

JD-0735



630-955

Z30957
RULMAN SAC KAPAĞI - (OVAL)
(2 DELİKLİ) - (25'LİK) - PFL205

JD-0736



630-955

Z30026
RULMAN SAC KAPAĞI - (OVAL)
(2 DELİKLİ) - (30'LUK) - PFL206

JD-0737



630-955

RULMAN SAC KAPAĞI - (OVAL)
(2 DELİKLİ) - (35'LİK) - PFL207

JD-0738



630-955

E10018
RULMAN SAC KAPAĞI - (ÜÇGEN)
(3 DELİKLİ) - (30'LUK) - PFT206

JD-0739



630-955

E10018
RULMAN SAC KAPAĞI - (ÜÇGEN)
(3 DELİKLİ) - (35'LİK) - PFT207



TARMO A.Ş.

JOHN DEERE

www.tarmo.com.tr

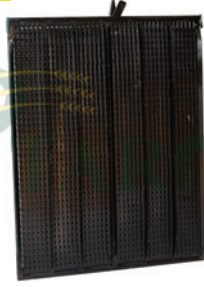
JD-0740



955

AZ10142
ÜST ELEK
(970x1230mm)

JD-0741



955

AZ12449-AZ10143
ALT ELEK
(970x1230mm)

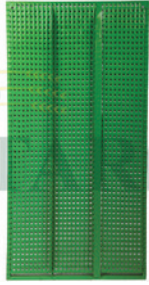
JD-0744



975-1075

AZ23544-AZ22798
ÜST ELEK
(1230x1522mm)

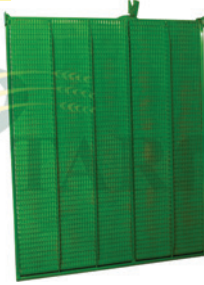
JD-0745



975-1075

AZ22799
ALT ELEK
(1230x1522mm)

JD-0750



1170

DQ12662-DQ12663
ÜST ELEK
(1232x1515mm)

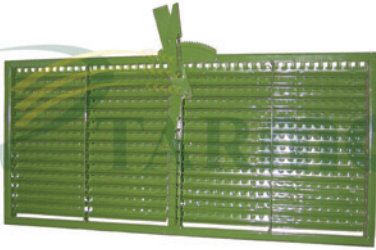
JD-0751



1170

DQ27617
ALT ELEK
(1232x1545mm)

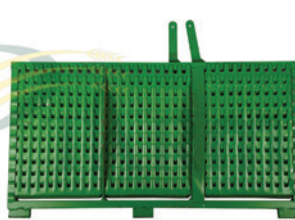
JD-0764



955

AZ13656-AZ10144
İLAVE ELEK
(970x460mm)

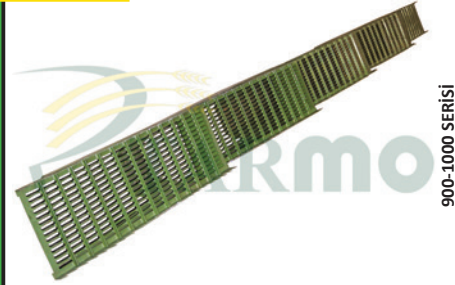
JD-0766



975-1075

AZ44101-AZ12620
İLAVE ELEK
(1230x460mm)

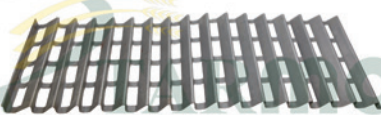
JD-0782



900-1000 SERİSİ

AZ27828-AZ27890
SARSAK

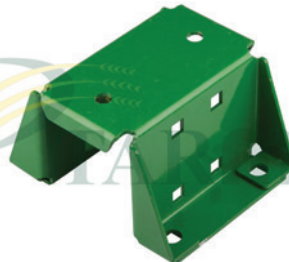
JD-0790



900-1000 SERİSİ

Z38552
SARSAK SACI
(BUĞDAY İÇİN)

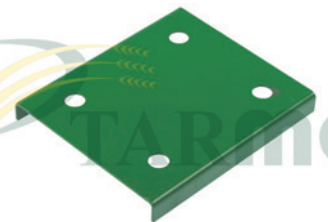
JD-0794



1000-2000 SERİSİ

Z56208
SARSAK TAKOZ SACI

JD-0795



630-955

Z37922-Z20040
SARSAK KRANKI YATAK SACI



TARMO A.Ş.

JOHN DEERE

www.tarmo.com.tr

JD-0799



1000-7000 SERİSİ

AZ10348
ELEVATÖR BAŞLIĞI
(DEPO İÇİ)

JD-0803



950-955-968-1068

Z33620
GÖTÜRÜCÜ T-PALET
(54cm) - (4mm)

JD-0804



975-1075-1174-1450

Z33621
GÖTÜRÜCÜ T-PALET
(67cm) - (4mm)

JD-0806



1174-1170-1450

Z38440
GÖTÜRÜCÜ T-PALET
(98cm) - (4mm - GALVANİZ - EZME)

JD-0807



630-955

Z30160
GÖTÜRÜCÜ U-PALET
(4mm - GALVANİZ - EZME)

JD-0808



955-965

GÖTÜR. U-PALET
(4mm - GALVANİZ - 3 SIRA ZİNCİRE)

JD-0809



1170

GÖTÜRÜCÜ U-PALET
(64cm) - (4mm - EZME)