



MT-0001



FANTINI

**12727**  
HOUSING - LH

MT-0002



FANTINI

**12728**  
HOUSING - RH

MT-0003



FANTINI

**12130**  
HOUSING - RH

MT-0004



FANTINI

**12131**  
HOUSING - LH

MT-0005



FANTINI

**3464**  
PINION

MT-0006



FANTINI

**14819**  
PINION  
(Z-13 / 16) - (LONG)

MT-0007



FANTINI

**14818**  
PINION  
(Z-13 / 15) - (SHORT)

MT-0008



FANTINI

**13755**  
SPLINED SHAFT  
(Z-14 / 16)

MT-0009



FANTINI

**17033**  
GEAR  
(Z-16 / 28)

MT-0010



FANTINI

**17032**  
GEAR  
(Z-12 / 14) - (SMALL)

MT-0011



FANTINI

**3465**  
BEVEL GEAR

MT-0012



FANTINI

**14817**  
BEVEL GEAR



MT-0013



**12129**  
HEADED HOUSING  
(SHORT)

FANTINI

MT-0014



**23848**  
CROWN WHEEL

FANTINI

MT-0015



**13478**  
SQUARE SHAFT

FANTINI

MT-0016



**13763**  
GEAR  
(Z-23)

FANTINI

MT-0017



**13762**  
SHAFT  
(Z-20) - (SPLINED)

FANTINI

MT-0018



**BEVEL GEAR**  
(Z13 / 16)

FANTINI

MT-0019



**14808**  
HUB

FANTINI

MT-0020



**14458**  
SHAFT  
(581mm) - LH

FANTINI

MT-0021



**14814**  
SHAFT  
(533mm) - RH

FANTINI

MT-0022



**13083**  
SPROCKET  
(Z-18)

FANTINI

MT-0023



**14556**  
GEAR  
(Z-9) - (FRONT)

FANTINI

MT-0024



**3429**  
HOUSING  
(SPHERO) - RH

FANTINI



MT-0025



**3430**  
HOUSING  
(SPHERO) - LH

FANTINI

MT-0026



**7772**  
END FITTING

FANTINI

MT-0027



**20774**  
TENSION GEAR  
(Z-15) - (REAR)

FANTINI

MT-0028



**20625**  
TENSION GEAR  
(Z-14) - (REAR)

FANTINI

MT-0029



CLUTCH  
(M30) - (SPLINED)

FANTINI

MT-0030



**19900**  
GEARBOX  
(COMPLETE)

FANTINI

MT-0032



**13739**  
KNIFE  
(LARGE)

ALL MODELS

MT-0033



**03959**  
CEMENTED SPACER

ALL MODELS

MT-0034



**20807**  
SPRING  
(KIT)

ALL MODELS

MT-0035



**12918**  
COUPLING  
(SMALL)

ALL MODELS

MT-0036



**12917**  
TELESCOPIC COUPLING

ALL MODELS

MT-0037



**12133**  
BLADE

ALL MODELS



MT-0038



ALL MODELS

**3475**  
BEARING  
(DHK 3038)

MT-0039



ALL MODELS

**16405**  
BUSHING  
(25x30x18mm)

MT-0040



ALL MODELS

**13624**  
SHAFT

MT-0041



ALL MODELS

**13648**  
SHAFT

MT-0042



ALL MODELS

**9793**  
SEAL

MT-0043



ALL MODELS

**13635**  
SEAL

MT-0044



ALL MODELS

**1332**  
SEAL

MT-0046



ALL MODELS

**15540**  
HOUSING  
(LARGE)

MT-0047



ALL MODELS

**14869**  
HOUSING  
(SMALL)

MT-0048



ALL MODELS

**13774**  
BEVEL GEAR  
(Z-15 / 24) - (SET)

MT-0049



ALL MODELS

**13776**  
BEVEL GEAR  
(Z-17 / 24) - (SET)

MT-0050



ALL MODELS

**13773**  
BEVEL GEAR  
(Z-16 / 24) - (SET)





MT-0051



ALL MODELS

**11423**  
DISK  
(COMPLETE)

MT-0052



ALL MODELS

**23383**  
TENSION GEAR  
(Z-9)

MT-0053



ALL MODELS

**14457**  
SHAFT  
(581mm) - RH

MT-0054



ALL MODELS

**20773**  
FORK

MT-0055



ALL MODELS

**10672**  
PIN

MT-0056



ALL MODELS

**16408**  
WASHER

MT-0057



ALL MODELS

**3358**  
RING

MT-0058



FANTINI

**13777**  
GEAR  
(Z-15 / 25)

MT-0059



FANTINI

**GEAR**  
(Z-15 / 29) - (SET)

MT-0060



FANTINI

**12760**  
TIP  
(PLASTIC)

MT-0061



FANTINI

**13914**  
BONNET  
(PLASTIC)

MT-0063



FANTINI

**10671**  
PIN  
(HEADED)



MT-0064



FANTINI

**10515**  
SPRING

MT-0067



FANTINI

**13756**  
SPRING

MT-0068



FANTINI

**19874**  
KEY

MT-0069



FANTINI

**14813**  
KEY

MT-0070



GERINGHOFF

**GEAR**  
(Z-17) - (WITH KEY)

MT-0265



FANTINI

**3071**  
CHAIN

MT-0266



FANTINI

**6943**  
CHAIN

MT-0267



CRESSONI

**CHAIN**

MT-0268



GERINGHOFF

**CHAIN**

MT-0269



FANTINI

**3119**  
CHAIN LINK

MT-0270



FANTINI

**3130**  
CHAIN LINK

MT-0271



FANTINI

**CHAIN LINK**



MT-0272



GERINGHOFF

CHAIN LINK

MT-0273



FANTINI

OFFSET LINK

MT-0300



AKTURK

GEAR  
(Z-16 / 28)

MT-0301



AKTURK

SHAFT  
(SPLINED)

MT-0302



AKTURK

BUSHING

MT-0303



AKTURK

BEVEL GEAR  
(Z-16 / 14)

MT-0304



AKTURK

GEAR  
(Z-14 / 12)

MT-0305



AKTURK

GEAR  
(Z-14)

MT-0306



AKTURK

GEAR  
(Z-23)

MT-0307



TC50 SERIES-LAVERDA

BEVEL GEAR AND PINION  
(Z-15 / 33) - (SET)

MT-0308



TC50 SERIES

BEVEL GEAR AND PINION  
(Z-15 / 27) - (SET)

MT-0309



LAVERDA-TC50-CS SERIES

BEVEL GEAR AND PINION  
(Z-10 / 24) - (SET)



MT-0310



TC50 SERIES

BEVEL GEAR AND PINION  
(Z-10 / 24) - (SET)

MT-0311



CLAA5

BEVEL GEAR AND PINION  
(Z-18 / 30) - (SET)

MT-0312



CLAA5

BEVEL GEAR AND PINION  
(Z-21 / 28) - (SET)

MT-0313



AKTURK

PINION  
(Z-27)

MT-0314



AKTURK

SPROCKET  
(Z-15)

MT-0315



AKTURK

GEAR  
(Z-16) - (CONICAL)

MT-0316



AKTURK

SPROCKET  
(Z-15) - (WITH BEARING)

MT-0317



AKTURK

SHAFT  
(Z-14 / 16) - (SPLINED)

MT-0318



AKTURK

SHAFT  
(Z-6) - (SPLINED)

MT-0319



AKTURK

SHAFT  
(Z-23)

MT-0320



AKTURK

CONNECTING PART  
(CONICAL)

MT-0321



AKTURK

SHAFT  
(Z-23) - (SPLINED)





MT-0322



AKTURK

SHAFT  
(WITH KEY)

MT-0323



AKTURK

HOUSING  
(WITH KEY)

MT-0324



AKTURK

FORK

MT-0325



AKTURK

WEDGE

MT-0326



AKTURK

HOUSING - RH

MT-0327



AKTURK

HOUSING - LH

MT-0328



AKTURK

HUB - RH

MT-0329



AKTURK

HUB - LH

MT-0330



AKTURK

ADJUSTMENT LEVER

MT-0331



AKTURK

WASHER

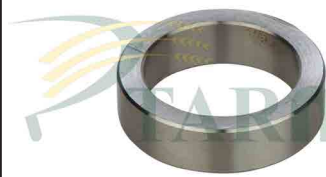
MT-0332



AKTURK

PIN

MT-0334



AKTURK

RING



MT-0335



AKTÜRK

DIVIDER AND DIVIDER POINT  
RH

MT-0336



AKTÜRK

DIVIDER AND DIVIDER POINT  
LH

MT-0364



AKTÜRK

KNIFE

MT-0365



AKTÜRK

KNIFE - (LARGE)

MT-0366



AKTÜRK

BLADE



BL-0001



GALLIGNANI

BEVEL GEAR AND PINION  
(Z-7 / 47) - (SET)

BL-0002



GALLIGNANI

BEVEL GEAR AND PINION  
(Z-8 / 47) - (SET)

BL-0025



GALLIGNANI

CLUTCH  
(LARGE)

BL-0026



GALLIGNANI

CLUTCH  
(SMALL)

BL-0027



5000-5100

8857035  
STEEL ROPE

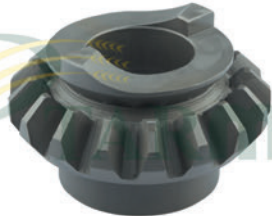
BL-0036



CLAAS BALER

980326.0  
CONICAL PINION  
(Z-19 / 21)

BL-0037



CLAAS BALER

980327.1  
BEVEL GEAR  
(Z-17)

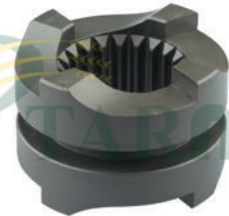
BL-0038



CLAAS BALER

980393.1  
WHEEL SET  
(Z-17 / 17)

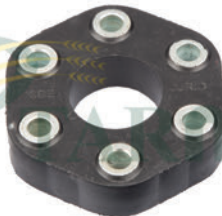
BL-0039



CLAAS BALER

980335.1  
CONTROL SLEEVE

BL-0040



MERCATOR

788557.0  
COUPLING DISC

BL-0041



JAGUAR-QUANTUM-SPRINT

918238  
SPRING TINE



BL-0001



GALLIGNANI

BEVEL GEAR AND PINION  
(Z-7 / 47) - (SET)

BL-0002



GALLIGNANI

BEVEL GEAR AND PINION  
(Z-8 / 47) - (SET)

BL-0025



GALLIGNANI

CLUTCH  
(LARGE)

BL-0026



GALLIGNANI

CLUTCH  
(SMALL)

BL-0027



5000-5100

8857035  
STEEL ROPE

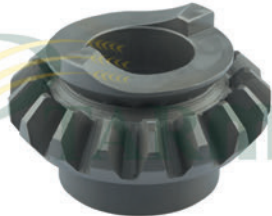
BL-0036



CLAAS BALER

980326.0  
CONICAL PINION  
(Z-19 / 21)

BL-0037



CLAAS BALER

980327.1  
BEVEL GEAR  
(Z-17)

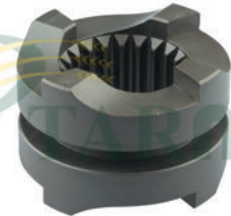
BL-0038



CLAAS BALER

980393.1  
WHEEL SET  
(Z-17 / 17)

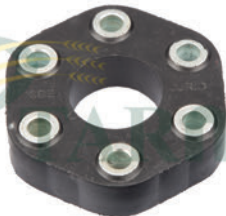
BL-0039



CLAAS BALER

980335.1  
CONTROL SLEEVE

BL-0040



MERCATOR

788557.0  
COUPLING DISC

BL-0041



JAGUAR-QUANTUM-SPRINT

918238  
SPRING TINE





F-0001



DEXTA

957E7100C  
1-3 GEAR  
(Z-49)

F-0002



DEXTA

957E7101E  
2-5 GEAR  
(Z-41)

F-0003



DEXTA

957E7017C  
INPUT SHAFT  
(Z-17)

F-0004



DEXTA

957E7061E  
MAIN SHAFT  
(Z-28 / 17)

F-0005



DEXTA

957E7111D  
COUNTERSHAFT  
(Z-16)

F-0006



DEXTA

C5NN7113G  
GEAR  
(Z-57)

F-0007



DEXTA

E418GA9  
COUNTERSHAFT GEAR

F-0011



2000

C5NN7100A  
1st GEAR  
(Z-49)

F-0012



2000

957E7101E  
2-5 GEAR  
(Z-41)

F-0013



2000

960E7061A-81804670  
MAIN SHAFT  
(Z-28 / 17)

F-0014



2000

C5NN7017H  
INPUT SHAFT  
(Z-17)

F-0015



2000

C5NN7113G/1  
GEAR  
(Z-57)



F-0016



C5NN7113A  
COUNTERSHAFT GEAR

2000

F-0017



957E7111E  
COUNTERSHAFT  
(Z16)

2000

F-0019



349GA9  
GEAR

2000

F-0026



C5NN7100F-81813565  
1st GEAR  
(Z-46)

3000-3600-3610

F-0027



C5NN7102F-81813567  
2nd GEAR  
(Z-43)

3000-3600-3610

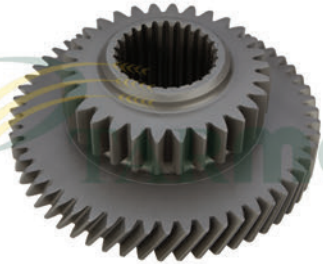
F-0029



C5NN7K013E-81813564  
REVERSE GEAR  
(Z-32)

3000-3600-3610

F-0034



C5NN7113D-81804754  
GEAR  
(Z-56)

3000-3600-3610

F-0036



C5NN7111M-81813568  
COUNTERSHAFT  
(Z-18)

3000-3600-3610

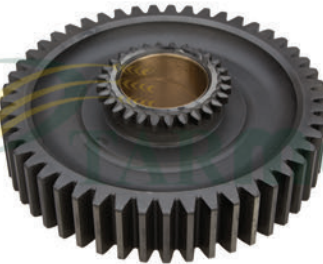
F-0037



C5NN7113B-81804753  
COUNTERSHAFT  
(Z-35 / 16)

3000-3600-5000

F-0038



C5NN7145A-81804812  
GEAR  
(Z-49)

3000-3600-5000

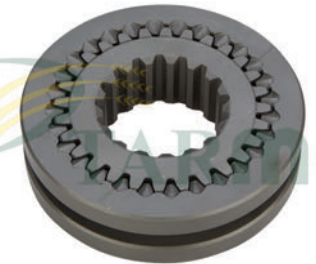
F-0039



C5NN7106D-83924545  
4/8 COUPLING  
(Z-21)

3000-3600-5000

F-0040

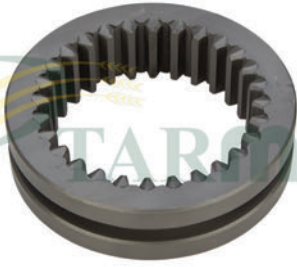


E344GA9-D6NN7N072C  
COUPLING & CONNECTOR  
(SET)

3000-3600-3610



F-0041



3000-3600-5000-6600

957E7106  
COUPLING

F-0045



3000-3600

C5NN702A-81801786  
PTO SHAFT

F-0055



5000-6600

C5NN7N100A-E6NN7N100BA  
1st GEAR  
(Z-49)

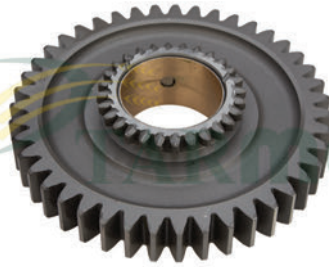
F-0056



3610-5000-6600

C5NN7N100C-81813521  
1st GEAR  
(Z-46)

F-0057



5000-6600

C5NN7N101D-81813520  
2nd GEAR  
(Z-43)

F-0058



5000-6600

C5NN7N339D-81805076  
3rd GEAR  
(Z-35)

F-0060



5000-6600

C5NN7N012A  
REVERSE GEAR  
(Z-30)

F-0061



5000-6600-6610-7610

C5NN7N012B-E6NN7N012AA  
REVERSE GEAR  
(Z-32)

F-0064



5000-6600

C5NN7C094B  
MAIN SHAFT  
(Z-30 / 18)

F-0065



5000-6600

C5NN7C094A  
MAIN SHAFT  
(Z-30 / 16)

F-0066



5000-6600

C5NN7111G  
COUNTERSHAFT  
(Z-30)

F-0067



5000-6600

C5NN7A684A  
PTO SHAFT  
(Z-15 / 25)



**F-0069**

5000

**E0NN7106BA-81813478**  
**COUPLING GEAR**  
**(Z-21)**

**F-0073**

5000-6600

**D2NNN752C-81801921**  
**PTO SHAFT**

**F-0074**

5000-6600

**D2NNN752B-81826817**  
**PTO SHAFT**  
**(30,68cm)**

**F-0075**

5000-6600-6610

**C5NNA726A-81801857**  
**PTO GEAR**  
**(Z-81)**

**F-0076**

5000-6600-6610

**C5NN745B-D1NN745B**  
**PTO GEAR DRIVER**  
**(Z-23)**

**F-0077**

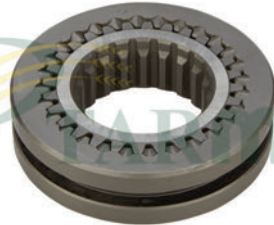
5000-6600

**D2NNN883A-C7NNN883A**  
**GEAR**  
**(FORGED)**

**F-0078**

5000-6600

**D6NN7N072A**  
**COUPLING**  
**(SET)**

**F-0079**

5000-6600

**D6NN7N072B-81804695**  
**COUPLING**  
**(SET)**

**F-0081**

5000-6600

**C9NN7C094B-81822959**  
**MAIN SHAFT**  
**(Z-30 / 18)**

**F-0083**

5000-6600

**C9NN7113B**  
**COUNTERSHAFT GEAR**

**F-0084**

5000-6600-6610

**C5NNA701A-81801779**  
**SHAFT**

**F-0086**

5000-6600-6610

**C5NN4044A-PB302.24**  
**GEAR**  
**(Z-20)**





# TARMO A.Ş.

FORD

[www.tarmo.com.tr](http://www.tarmo.com.tr)

F-0087



5000-6600-6610

**C7NNA726C-81817322**  
PTO GEAR  
(Z-79)

F-0088



5000-6600-6610

**C7NN745B-D1NN745C**  
PTO GEAR DRIVER  
(Z-25)

F-0089



5000

**C5NN4049A-PB302.25**  
PLANET SUN GEAR

F-0100



6610-6610S-7740

**E0NN7017HA-83926238**  
INPUT SHAFT

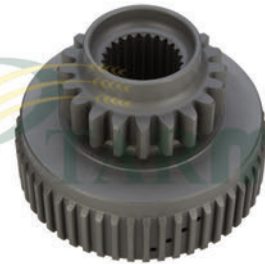
F-0101



6610-6610S-6610S-7740-7840-8240-TS

**D2NN7017EA-83946987**  
INPUT SHAFT

F-0102



6610-6610S

**E0NNN750AA-81879096**  
HUB PTO CLUTCH

F-0103



6610-6610S

**E6NN7111AA-81822960**  
COUNTERSHAFT  
(Z-30)

F-0104



6610-6610S

**C9NNN883AA-D9NNN883AA**  
GEAR

F-0106



5000-6610

**E4NN7A684AA-83948847**  
PTO SHAFT  
(Z-20 / 25)

F-0108



6640-7740

**E9NN7A684AA-81862903**  
PTO SHAFT  
(Z-20) - (1020mm)

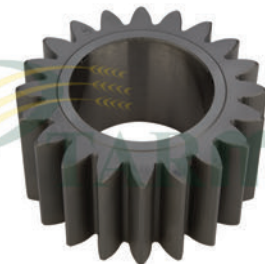
F-0111



6610-6610S

**D0NN4049A-81823522**  
PLANET SUN GEAR

F-0112



6610-6610S

**D6NN3N175A**  
GEAR



F-0129



3000-3600

**C5NNN705A**  
PTO SLEEVE

F-0131



3860-4000

**C5NN4044B**  
PLANET GEAR

F-0132



4000

**C5NN4049B**  
PLANET SUN GEAR

F-0135



3000-3600

**C5NN717A**  
PTO SLEEVE

F-0136



MAJOR

**INPUT SHAFT**