

**KL-0001**

DOM 68-78-88

677488.0
1.VİTES DİŞLİSİ
(Z-48)

KL-0002

DOM-JAG-MEGA

609402.0
2-3 VİTES DİŞLİSİ
(Z-26 / 38)

KL-0003

MEDION-MEGA

637724.0
2-3 VİTES DİŞLİSİ
(Z-23 / 35)

KL-0004

DOM-LEX-MEGA-TUCANO

669746.1
2-3 VİTES DİŞLİSİ
(Z-21 / 33) - (HİLAL DİPTE)

KL-0005

DOM 78-88-98-MEGA 202

063158.0
2-3 VİTES DİŞLİSİ
(Z-21 / 33) - (HİLAL ÜSTTE)

KL-0006

DOM-JAG

685641.0
2-3 VİTES DİŞLİSİ
(Z-24 / 34) - (HİLAL ÜSTTE)

KL-0007

DOM 68-78-130-JAG 800

643570.0
KAMALI MİL
(Z-11) - (UZUN)

KL-0008

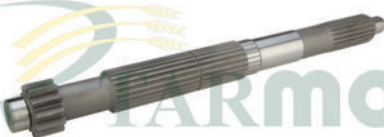
DOM-JAG-MEGA

643466.0
KAMALI MİL
(Z-12)

KL-0010

DOM 68

649971.0
KAMALI MİL PRİZDİREK
(532,5mm)

KL-0011

DOM-JAG

649967.0
KAMALI MİL PRİZDİREK

KL-0012

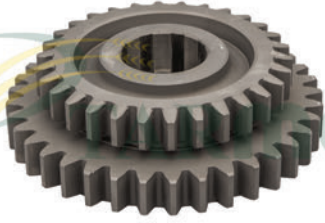
MEDION-MEGA-LEX

669549.0
KAMALI MİL PRİZDİREK

KL-0013

DOM 78-88-98-108-MEGA

649972.0
KAMALI MİL PRİZDİREK
(Z-15) - (355mm) - (ÜST)

**KL-0014**

DOM 68-75-88

677491.0
KAMALI MİL DİŞLİSİ
(Z-30 / 37)

KL-0015

DOM-LEX-MEGA-TUCANO

669748.0
KAMALI MİL DİŞLİSİ
(Z-20 / 44)

KL-0016

JAG

980336.1
KAMALI MİL DİŞLİSİ
(Z-22 / 25)

KL-0017

JAG

980333.2
KAMALI MİL DİŞLİSİ
(Z-24) - (GÖBEKLİ)

KL-0018

JAG

980334.2
KAMALI MİL DİŞLİSİ
(Z-26) - (GÖBEKLİ) - (BÜYÜK)

KL-0019

DOM 68-76-130-140-150

635033.2
KAMALI MİL KARŞILIĞI
(Z-16)

KL-0021

DOM 88-98-MEDION-LEX

679243.0
CER DİŞLİSİ
(Z-98 / 36) - (PROFİL TAŞLAMALI)

KL-0022

DOM-JAG-MEGA

606946.1
CER PİNYONU
(Z-12 / 22)

KL-0023

DOM 76-86-96

679242.0
CER PİNYONU
(Z-12 / 22)

KL-0024

DOM

674753.1
CER DİŞLİ PİNYONU
(Z-13) - (FREZELİ)

KL-0025

LEX 460-440

669331.1
DİFERANSİYEL DİŞLİSİ
(Z-27)

KL-0026

DOM 78-88-98

657356.0
MOTORBAŞI KUYRUK MİLİ

**KL-0027**

MEDION-MEGA

545621.0
MOTORBAŞI KUYRUK MİLİ

KL-0028

DOM 48-68

723511.0
MOTORBAŞI KUYRUK MİLİ

KL-0029

JAG

070251.5
MOTORBAŞI KUYRUK MİLİ

KL-0030

DOM-JAG

609404.0
2-3 VİTES DİŞLİSİ
(Z-33 / 21)

KL-0031

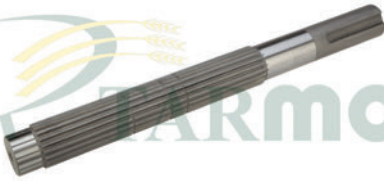
DOM 108-LEX-MEGA-TUCANO

669747.1
2-3 VİTES DİŞLİSİ

KL-0032

TUCANO

775726.0
2-3 VİTES KAMALI MİLİ

KL-0033

LEX

260687.0
KAMALI MİL

KL-0034

DOM 108-MEDION 310-340

637829.0
KAMALI MİL - (UCU KAMALI)

KL-0035

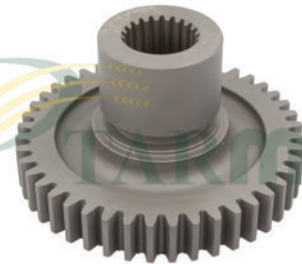
DOM-JAG

631634.2
GERİ VİTES DİŞLİSİ
(Z-17)

KL-0036

DOM-MEDION-LEX

669818.1
GERİ VİTES DİŞLİSİ

KL-0037

TUCANO

775735.0
1. VİTES DİŞLİSİ
(Z-44)

KL-0038

MEGA-MEDION

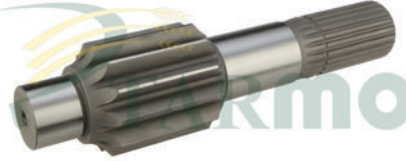
1 VE GERİ VİTES DİŞLİSİ
(Z-24 / 36)

**KL-0039**

LEX

669434.1**CER DİŞLİSİ****(ø 293,8mm) - (110mm) - (BÜYÜK)****KL-0041**

DOM-JAG

685526.0**CER DİŞLİSİ****(Z-78) - (PROFİL TAŞLAMALI)****KL-0042**

DOM 106-118-MEDION-MEGA

602109.0**CER PİNYONU****KL-0043**

LEX

669437.2**CER PİNYONU****(Z-13) - (ÇİFT FREZELİ)****KL-0044**

LEX-MEDION-MEGA

669439.1**CER PİNYONU****(Z-12 / 21)****KL-0045**

LEX

769786.0**KAMALI MİL****(Z-21) - (444,50mm)****KL-0046**

LEX

769784.0**KAMALI MİL PRİZDİREK****(Z-23 / 15 / 24) - (363,10mm)****KL-0054**

TUCANO

549048.0**MOTORBAŞI MİLİ****(KISA)****KL-0055**

TUCANO

545039.1**MOTORBAŞI MİLİ****(UZUN)****KL-2061**

LEX 440-460

669327.0**DİFERANSİYEL DİŞLİSİ****(Z-33 / 28)****KL-2062**

LEX

637505.0**DİFERANSİYEL DİŞLİSİ****(Z-60)****KL-2063**

LEX

669328.0**DİFERANSİYEL DİŞLİSİ****(Z-43)**

**KL-2064**

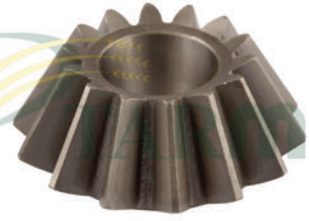
LEX

637503.0
DİFERANSİYEL DİŞLİSİ
(Z-52) - (HELİS)

KL-2065

LEX

637507.0
DİFERANSİYEL DİŞLİSİ
(Z-43) - (HELİS)

KL-2067

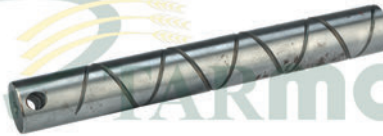
BÜTÜN MODELLER

635881.0
İSTAVROZ DİŞLİSİ
(KÜÇÜK)

KL-2068

BÜTÜN MODELLER

677489.1
İSTAVROZ DİŞLİSİ
(BÜYÜK)

KL-2069

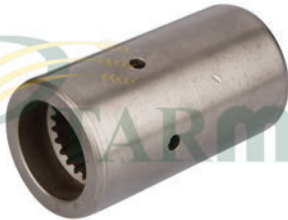
BÜTÜN MODELLER

631630.2
İSTAVROZ MİLİ
(UZUN)

KL-2140

LEX

669548.0
HİDROSTATİK MOTOR KAPLİNİ
(ALT)

KL-2141

DOM76-78-88-98

685162.1
HİDROSTATİK MİL KAPLİNİ
(Z-23)

KL-2143

HİDROSTATİK ÜST MİLİ
(UZUN) - (SAUER)

KL-2144

HİDROSTATİK ALT MİLİ
(KISA) - (SAUER)

KL-2146

HİDROSTATİK ALT MİLİ
(KISA) - (LİNDE)

KL-2149

TUCANO

564196.0
HİDROSTATİK TELİ
(SİRAL) - (ORİJİNAL MALZEME)

KL-2154

DOM-MEGA-MED-TUCANO

628691.0
DEVİR DÜŞÜRÜCÜ REDÜKTÖR DİŞLİ
(Z-29 / 17)

**KL-2155**

DOM-MEGA-MED-TUCANO

628692.2**DEVİR DÜŞÜRÜCÜ REDÜKTÖR DİŞLİ
(İÇİ FREZELİ)****KL-2156**

DOM-MEGA-MED-TUCANO

628693.0**DEVİR DÜŞÜRÜCÜ REDÜKTÖR DİŞLİ
(Z-27)****KL-2159**

LEX

694826.0-694828.0**ROTOR ŞANZIMAN AYNA MAHRUTİ
DİŞLİ SETİ - (SOL)****KL-2161**

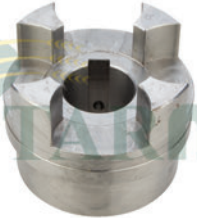
LEX

694831.0**ROTOR ŞANZIMAN MİLİ
(SOL)****KL-2162**

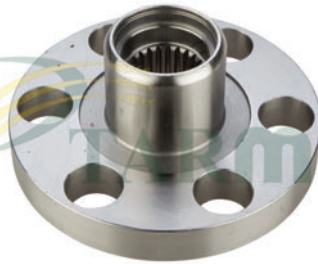
LEX

694827.0**ROTOR ŞANZIMAN MAHRUTİ DİŞLİ
(BÜYÜK) - (SAĞ)****KL-2163**

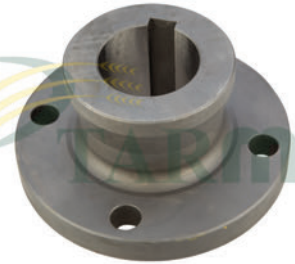
LEX

694825.0**ROTOR ŞANZIMAN MAHRUTİ DİŞLİ
(KÜÇÜK) - (SAĞ)****KL-2165**

LEX

771337.1**ROTOR ŞANZIMAN BAĞLANTI YATAĞI
(4 ÇENELİ)****KL-2166**

LEX

736602.1**ROTOR ŞANZIMAN KAPLIN YATAĞI
(Ø 200mm) x (85mm)****KL-2167**

LEX

627809.0**BATÖR ŞANZIMAN BAĞLANTI YATAĞI****KL-2168**

LEX

644975.0-744832.0**BATÖR KASNAK ŞAPKALI MİLİ****KL-0061A**

BÜTÜN MODELLER

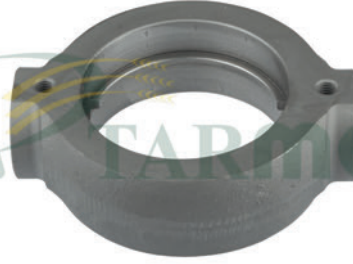
643686.1**BIÇAKKOLU ŞANZMANI****KL-0061**

BÜTÜN MODELLER

643686.1**BIÇAKKOLU ŞANZMANI
KOMPLE**

**KL-0062**

BÜTÜN MODELLER

643682.0**BIÇAKKOLU ŞANZIMAN ÇATALI****KL-0063**

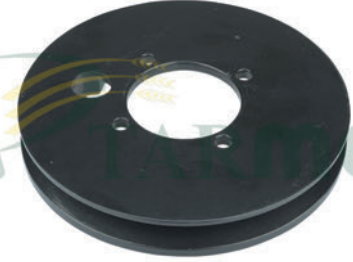
BÜTÜN MODELLER

643683.0**BIÇAKKOLU ŞANZIMAN İÇ YATAĞI****KL-0064**

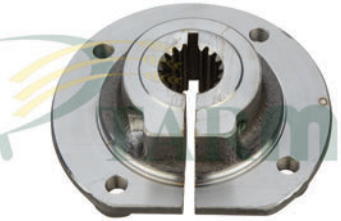
BÜTÜN MODELLER

648116.2**BIÇAKKOLU ŞANZIMAN SALLAMA KOLU****KL-0065**

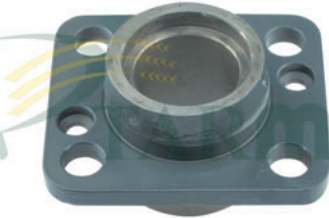
BÜTÜN MODELLER

643685.1-649945.0**BIÇAKKOLU ŞANZIMAN EKSANTRİĞİ (FREZELİ)****KL-0066**

BÜTÜN MODELLER

670402.0**BIÇAKKOLU ŞANZIMAN KASNAĞI****KL-0067**

BÜTÜN MODELLER

670401.1**BIÇAKKOLU ŞANZIMAN KASNAK YATAĞI - (DÖVME)****KL-0068**

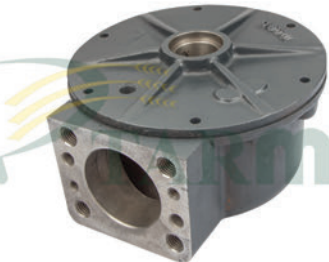
BÜTÜN MODELLER

643659.0**BIÇAKKOLU ŞANZIMAN DIŞ YATAĞI****KL-0069**

BÜTÜN MODELLER

643404.0**BIÇAKKOLU ŞANZIMAN ÇATAL PİMİ****KL-0070**

BÜTÜN MODELLER

643628.0**BIÇAKKOLU ŞANZIMAN ÇATAL BURCU****KL-0071**

BÜTÜN MODELLER

643660.1**BIÇAKKOLU ŞANZIMAN KUTUSU (KAPAKLI) - (BOŞ)****KL-0072**

BÜTÜN MODELLER

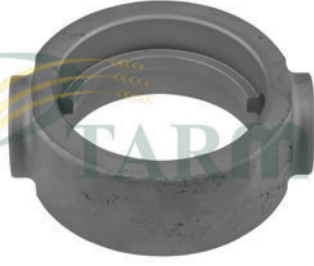
649990.0**BIÇAKKOLU ŞANZIMAN EKSANTRİK MİL SOMUNU****KL-0073**

BÜTÜN MODELLER

637998.0-643403.1**BIÇAKKOLU ŞANZIMAN ÇATALI (ŞAPKALI BURÇLU)**

**KL-0074**

DOM-MEGA

649989.0**BIÇAKKOLU ŞANZIMAN EKSANTRİK
MİLİ - (KALIN)****KL-0075**

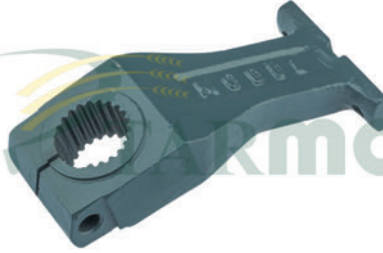
DOM-MEGA

637999.1-643402.0**BIÇAKKOLU ŞANZIMAN İÇ YATAĞI
(BÜYÜK)****KL-0076**

DOM-LEX-MEGA

637991.0**BIÇAKKOLU ŞANZIMAN ÇATAL PİMİ****KL-0077**

LEX-MEGA

637779.0**BIÇAKKOLU ŞANZIMAN ÇATAL BURCU****KL-0078**

DOM-LEX-MEGA

670392.3**BIÇAKKOLU ŞANZIMAN SALLAMA
KOLU - (PARÇALI)****KL-0079**

DOM-LEX-MEGA

670395.2**BIÇAKKOLU ŞANZ. SALLAMA KOLU
UÇ PARÇASI****KL-0080A**

DOM-LEX-MEGA

643656.1**BIÇAKKOLU ŞANZMANI
(TAKVİYELİ)****KL-0080**

DOM-LEX-MEGA

643656.1**BIÇAKKOLU ŞANZMANI
(TAKVİYELİ) - (KOMPLE)****KL-0081A**

BÜYÜK TABLA

637534.1**BIÇAKKOLU ŞANZMANI****KL-0081**

BÜYÜK TABLA

637534.1**BIÇAKKOLU ŞANZMANI
(KOMPLE)****KL-0082**

BÜYÜK TABLA

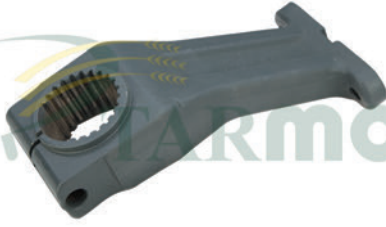
669915.1**BIÇAKKOLU ŞANZIMAN ÇATALI****KL-0083**

BÜYÜK TABLA

669914.1**BIÇAKKOLU ŞANZIMAN İÇ YATAĞI**



KL-0084



BÜYÜK TABLA

626931.0

BIÇAKKOLU ŞANZIMAN SALLAMASI

KL-0085



BÜYÜK TABLA

669913.1

BIÇAKKOLU ŞANZIMAN EKSANTRİĞİ
(FREZELİ)

KL-0086



BÜYÜK TABLA

626619.0

BIÇAKKOLU ŞANZIMAN KASNAĞI

KL-0087



BÜYÜK TABLA

669925.1

BIÇAKKOLU ŞANZIMAN KASNAK
YATAĞI - (DÖVME)

KL-0088



BÜYÜK TABLA

669916.0

BIÇAKKOLU ŞANZIMAN ÇATAL PİMİ

KL-0089

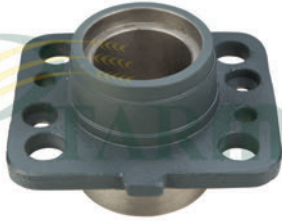


BÜYÜK TABLA

669917.0

BIÇAKKOLU ŞANZIMAN ÇATAL BURCU

KL-0090

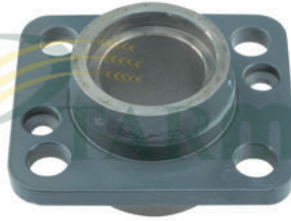


BÜYÜK TABLA

669921.1

BIÇAKKOLU ŞANZIMAN DIŞ YATAĞI

KL-2075



BÜYÜK TABLA

643659.0-643659.1

BIÇAKKOLU ŞANZIMAN DIŞ YATAĞI

KL-2077



BÜTÜN MODELLER

649944.0

BIÇAKKOLU ŞANZIMAN EKSANTRİK
PULU - (TIRTIRLI)

KL-2078



BÜTÜN MODELLER

BIÇAKKOLU ŞANZIMAN RANYEL
PULU

KL-0091



DOM 68-78-76-130-JAG 682

643531.0
ŞAPKALI AKS
(Z-36) - (DÖVME)

KL-0093



DOM-LEX-MEDION-MEGA

694208.1
ARKA TEKER AKSI
(TEK KULAK - SAĞ)

**KL-0094**

DOM-LEX-MEDION-MEGA

694207.1
ARKA TEKER AKSI
(ÇİFT KULAK - SOL)

KL-0095

LEX

669424.1
ARKA TEKER AKSI
(SAĞ - SOL)

KL-0096

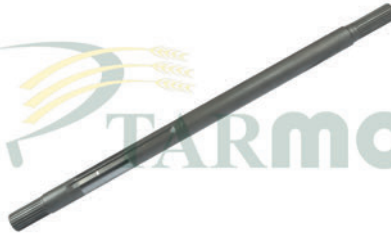
DOM-MEGA-MEDION-JAG

673412.0
ARKA TEKER AKSI
(TEK DELİK) - (SAĞ)

KL-0097

DOM-MEGA-MEDION-JAG

673417.0-685698.1
ARKA TEKER AKSI
(ÇİFT DELİK) - (SOL)

KL-0098

DOM-MEGA

602009.1
AKS MİLİ
(907mm) - (SAĞ)

KL-0099

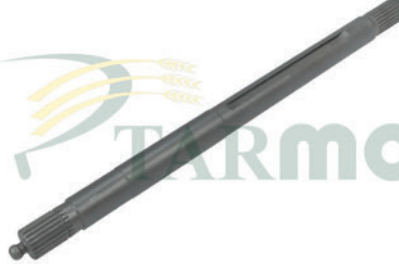
DOM-MEGA

602007.1
AKS MİLİ
(974mm) - (SOL)

KL-0100

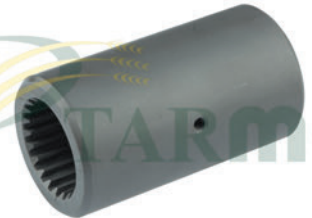
DOM

606872.1-609436.1
AKS MİLİ
(Ø 50mm) - (789mm) - (KISA) - (SOL)

KL-0101

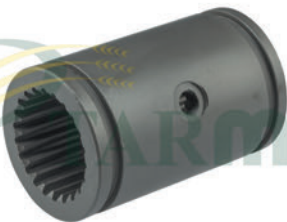
DOM-MEGA-MEDION

643016.1
AKS MİLİ
(943mm) - (UZUN) - (SAĞ)

KL-0102

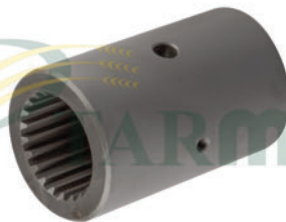
DOM-JAG-MEGA

649934.0
AKS FREZESİ KAPLIN
(Z-22) - (PİMLİ)

KL-0103

DOM-JAG-MEDION 340

679550.2
AKS FREZESİ KAPLIN
(Z-22) - (SEGMANLI)

KL-0104

LEX-TUCANO

769621.0
AKS FREZESİ KAPLIN
(Z-21)

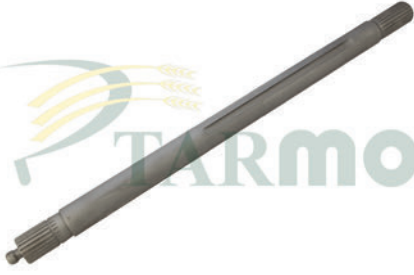
KL-0105

MEDION 310-320

637837.0
AKS MİLİ
(837mm) - (SAĞ - SOL)



KL-0106



DOM 106-108-118

602148.3
AKS MİLİ
(841mm)

KL-0110



DOM

BIÇAK MASTAR ŞERİDİ
(57,5 BIÇAK)

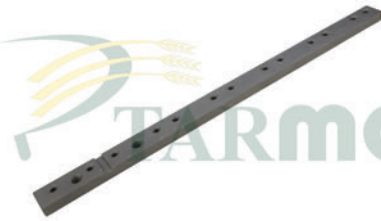
KL-0111



DOM 68

611213.0
BIÇAK MASTAR ŞERİDİ
(65 BIÇAK)

KL-0112



BÜTÜN MODELLER

626755.0
MASTARBAŞI LAMASI
(CİVATALI MASTARLAR İÇİN)

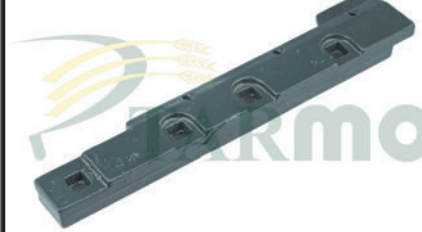
KL-0113



DOM 68-108-118-MEGA

676231.0
MASTARBAŞI LAMASI
(PERÇİNLİ MASTARLAR İÇİN)

KL-0114



DOM

611220.1
MASTARBAŞI LAMASI
DÖKÜM

KL-0115



DOM 68-76

603872.0
MASTARBAŞI LAMASI
(TOPUZLU)

KL-0116



DOM 68

676236.0
BIÇAK ÜST BASKISI
(PERÇİNLİ MASTARLAR İÇİN)

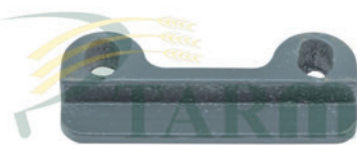
KL-0117



YENİ MODELLERE

626749.1
BIÇAK ÜST BASKISI
(CİVATALI MASTARLAR İÇİN)

KL-0118



DOM-MEGA

626748.0
BIÇAK MASTAR BAŞ BASKISI

KL-0119



DOM-MEGA

613017.2
BIÇAK MASTAR BAŞ BASKISI

KL-0121



BÜTÜN MODELLER

670120.1-100144.0
BIÇAK MASTAR ROTU
(ÇELİK YUVA VE GÖVDE SULU)



KL-0122



TUCANO-LEX

626411.0
BİÇAK MASTAR ROTU
(UZUN)

KL-0123



LEX

688030.0
BİÇAK MASTAR ROTU
(ÇELTİK MASTARI İÇİN)

KL-0124



BÜTÜN MODELLER

670098.0
BİÇAKKOLU ROTU

KL-0125



BÜTÜN MODELLER

643046.0
DİREKSİYON ROTU
(Dişi)

KL-0126



DOM 68-78-88

656113.1-177091.0
ARKA DİREKSİYON ROTU
(ERKEK)

KL-0127



DOM-JAG

570591.5
ARKA DİREKSİYON ROTU
(Dişi)

KL-0128



BÜTÜN MODELLER

670120.1-100144.0
BİÇAK MASTAR ROTU
(POLİAMİT YATAKLI)

KL-2085



LEX-JAG

668997.0
DİREKSİYON ROTU
(ERKEK)

KL-2086



LEX-JAG

668998.0
DİREKSİYON ROTU
(Dişi)

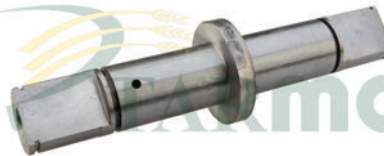
KL-2094



BÜTÜN MODELLER

ÇELTİK PALET MAKARASI - (D4)
(KOMPLE)

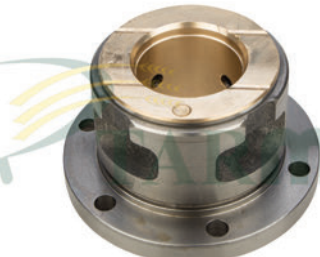
KL-2095



BÜTÜN MODELLER

ÇELTİK PALET YÜRÜTÜCÜ MAKARA
MİLİ - (FLANŞLI)

KL-2096



BÜTÜN MODELLER

ÇELTİK PALET YÜRÜTÜCÜ MAKARA
MİL YATAĞI - (BURÇLU)



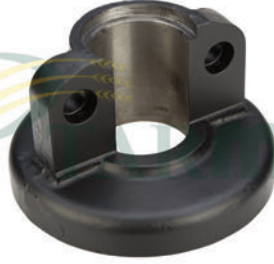
KL-2097



BÜTÜN MODELLER

ÇELTİK PALET YÜRÜTÜCÜ MAKARA
YATAK BURCU

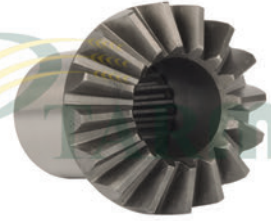
KL-2098



BÜTÜN MODELLER

ÇELTİK PALET YÜRÜTÜCÜ MAKARA
YATAK KEPİ

KL-0130



DOM

608528.0
ELEVATOR ŞANZIMAN DİŞLİSİ - (Z-16)
(UZUN) - (1 ADET)

KL-0131



MEDION-MEGA

683056.0
BOĞAZ KUSTURUCU DİŞLİ

KL-0132



LEX

668822.0
KUSTURUCU DİŞLİ
(BOĞAZIN) - (KÜÇÜK)

KL-0133



LEX

668823.0
KUSTURUCU DİŞLİ
(BOĞAZIN) - (BÜYÜK)

KL-0134



DOM-MEDION-MEGA-LEX

639593.0
KESMİK ELEVATOR BOŞALTICI
ŞANZIMANI - (KOMPLE)

KL-0135



DOM-MEDION-MEGA-LEX

605164.3
KES. ELEVATOR BOŞALTICI
ŞANZIMANI - (DİRSEKLİ) - (KOMP.)

KL-0136



DOM 88-98-108

603839.1
BUĞDAY ELEVATOR ŞANZIMANI
(KOMPLE)

KL-0137



DOM 88-98-108

608931.3
BUĞDAY ELEVATOR ŞANZIMANI
DİRSEKLİ - (KOMPLE)

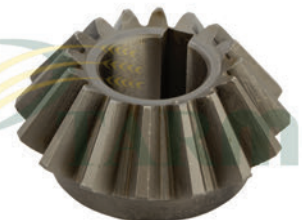
KL-0138



DOM-MEDION-LEX

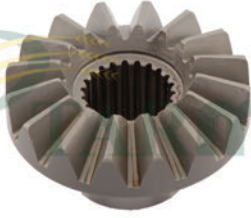
605587.1
DEPO BOŞALTICI DİŞLİ
(Z-23)

KL-0139



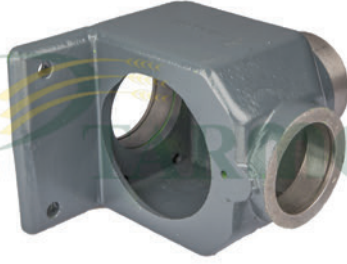
DOM-MEDION-LEX

605588.1
DEPO BOŞALTICI DİŞLİ
(Z-16)

**KL-0140**

MEGA 208-218

639590.0
DEPO BOŞALTICI DİŞLİ
(Z-16) - (FREZELİ) - (1 ADET)

KL-0141

DOM 88-98-108

603839.1
ELEVATÖR ŞANZIMAN BOŞ KUTU
(KÖŞELİ)

KL-0142

DOM 88-98-108

608931.3
ELEVATÖR ŞANZIMAN BOŞ KUTU
(DİRSEKLİ)

KL-0143

DOM 88-98-108

608527.1
ELEVATÖR ŞANZIMAN MİLİ
(Z-16 KARŞILIĞI)

KL-0144

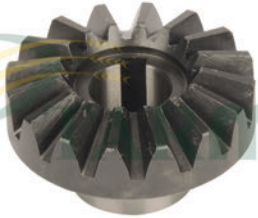
DOM 88-98-108

608523.0
ELEVATÖR ŞANZIMAN MİLİ
(Z-23 KARŞILIĞI)

KL-0145

DOM 88-98-108

608541.1
ELEVATÖR ŞANZIMANI KAPAK SACI

KL-0146

DOM-MEGA-MEDION

605791.1
KESMİK ELEVATÖR DİŞLİSİ
(Z-16) - (KONİK) - (KAMALI)

KL-0147

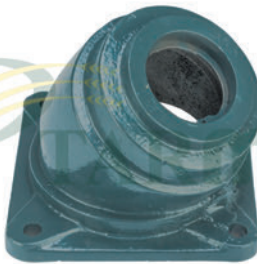
DOM-MEGA-MEDION

605729.0
KESMİK BOŞALTICI DİŞLİ MİLİ

KL-0148

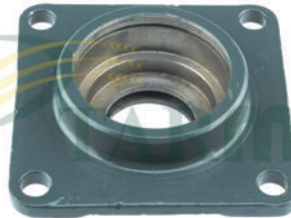
MEGA 208-218

639591.1
BOŞALTICI HELEZON DİŞLİ MİLİ
(FREZELİ)

KL-0149

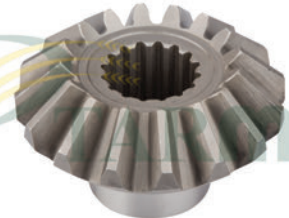
DOM-MEGA-MEDION

605164.3
KESMİK ELEVATÖR BOŞALTICI
ŞANZIMAN BOŞ KUTU - (DİRSEKLİ)

KL-0150

DOM-LEX-MEDION-MEGA

647510.1
KESMİK ELEVATÖR BOŞ KUTU YATAĞI

KL-1500

LEX

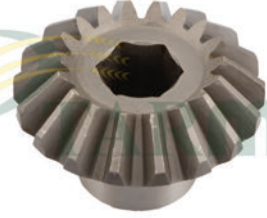
755203.1
DEPO BOŞALTICI KONİK DİŞLİ
(Z-16)

**KL-1501**

LEX

618946.3**DEPO BOŞALTICI KONİK DİŞLİ
(Z-16) - (SAPLI)****KL-1503**

DOM-MEGA

603837.0**BUĞDAY ELEVATÖR ŞANZIMAN MİLİ
(FREZELİ)****KL-1504**

JAG

911838.0**ELEVATÖR ŞANZIMAN DİŞLİSİ
(Z-18) - (ALTİKÖŞE)****KL-1505**

JAG

910314.1**ELEVATÖR ŞANZIMAN DİŞLİSİ
(Z-18)****KL-1506**

LEX-TUCANO

735887.0**KESMİK ELEVATÖR ŞANZIMANI
(KOMPLE)****KL-1507**

LEX-TUCANO

735888.0**KESMİK ELEVATÖR ŞANZIMAN DİŞLİSİ
(Z-16)****KL-1508**

LEX-TUCANO

735898.0**KESMİK ELEVATÖR ŞANZIMAN DİŞLİ
MİLİ - (Z-16)****KL-1509**

TUCANO

555542.0**KESMİK ELEVATÖR DİŞLİSİ
(Z-16)****KL-1510**

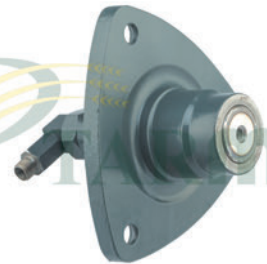
LEX

755202.1**BOŞALTICI HELEZON DİŞLİ MİLİ
(FREZELİ)****KL-1511**

LEX-TUCANO

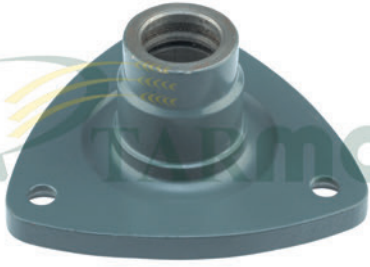
507015.0**KESMİK ELEVATÖR DİŞLİSİ
(Z-16) - (SAPLI)****KL-1512**

JAG

911834.0-912551.0**TANE ELAVATÖR ADAPTÖR DİŞLİSİ
(Z-24)****KL-0151**

DOM-MEGA-JAG

602560.2**BATÖR DEVİR YATAĞI
(3 KULAKLI) - (TAM TAKIM)**

**KL-0152**

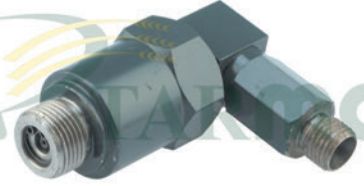
DOM-MEGA-JAG

629690.0
BATÖR DEVİR YATAĞI
(3 KULAKLI) - (BOŞ)

KL-0153

BÜTÜN MODELLER

655417.0
BATÖR DEVİR YATAK PİSTONU

KL-0154

DOM-MEGA-JAG

602561.2
BATÖR DEVİR YATAK HİDROLİK DEVİR
ADAPTÖRÜ

KL-0155

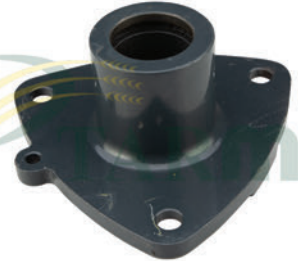
DOM-MEGA-JAG

630203.0
BATÖR YATAK SAPLAMASI

KL-0156

MEGA-MEDION-LEX

089810.0
BATÖR YATAK HİDROLİK DEVİR
ADAPTÖRÜ

KL-0157

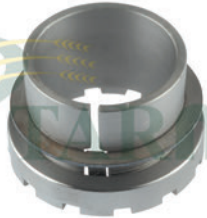
MEGA-LEX

089615.0
BATÖR DEVİR YATAĞI
(3 KULAKLI) - (BOŞ)

KL-0159

MEGA-MEDION

215493.0-642366.1
BATÖR RULMAN YATAK MANŞONU
(YARIKLI) - (TAKIM)

KL-0160

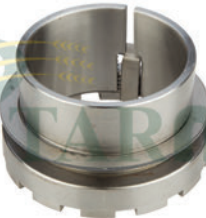
BÜTÜN MODELLER

610359.1-235882.0
BATÖR RULMAN YATAK MANŞONU
(YARIKLI) - (TAKIM)

KL-0161

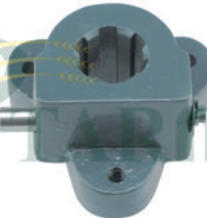
BÜTÜN MODELLER

726982.0-752212.1
SARSAK MANŞONU
(30'LUK SOMUNLU) - (TAKIM)

KL-0162

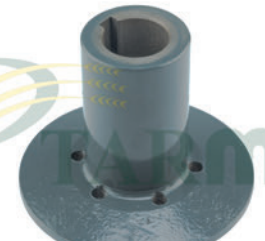
LEX

213055.0-669639.0
BATÖR RULMAN YATAK MANŞON
SOMUNU - (YARIKLI)

KL-0163

DOM-MAISPFL

608007.0
TABLA YATAĞI
(3 DELİKLİ) - (FREZELİ) - (TAKIM)

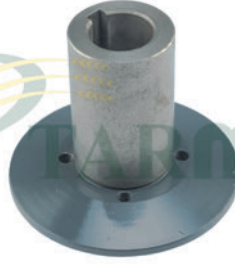
KL-0164

DOM-MEDION-MEGA

644327.0
BOĞAZ KASNAK POYRASI
(6 DELİKLİ) - (KISA) - (SFERO)

**KL-0165**

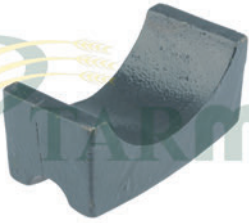
DOM

644318.0**BOĞAZ KASNAK POYRASI
(6 DELİKLİ) - (UZUN) - (SFERO)****KL-0166**

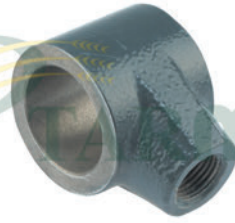
DOM-COM

670584.0**BOĞAZ KASNAK POYRASI
(4 DELİKLİ) - (SFERO)****KL-0167**

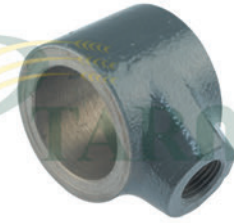
LEX-TUCANO

667303.2**BOĞAZ KASNAK POYRASI
(6 DELİKLİ) - (SFERO)****KL-0169**

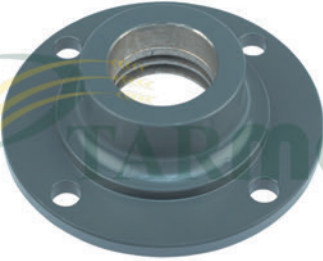
DOM

670466.1**BOĞAZ AY KEPİ****KL-0170**

DOM-LEX-MEGA

645830.1**HELEZON PARMAK T-YATAĞI
(Ø 30mm) - (PLASTİK TAKILI)****KL-0171**

BÜTÜN MODELLER

670199.0**HELEZON PARMAK T-YATAĞI
(Ø 25mm) - (PLASTİK TAKILI)****KL-0172**

MEGA-LEX

628736.0**BATÖR RULMAN YATAĞI
(SOL)****KL-0173**

DOM-MEGA-MEDION

061055.1**RULMAN YATAĞI
(SAP PARÇALAYICI)****KL-0174**

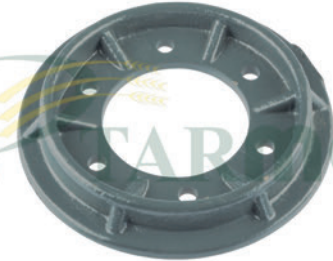
DOM-MEGA-MEDION

061410.1**RULMAN YATAĞI
(SAP PARÇALAYICI)****KL-0175**

DOM-JAG-LEX

671082.0**BATÖR DEVİR YATAK PİSTONU****KL-0176**

MEGA-MEDION

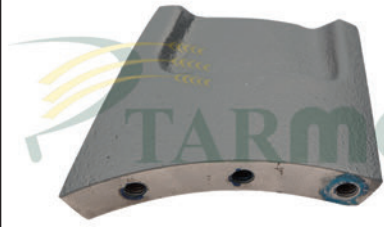
753841.0**HELEZON SİGORTA YATAĞI
(FREZELİ)****KL-0177**

BÜTÜN MODELLER

645933.0**HELEZON DIŞLI YATAĞI
(BÜYÜK TİP)**



KL-0178



TUCANO 320-330

603022.1

BATÖR KASNAK ÜÇGEN ROZETİ

KL-0179

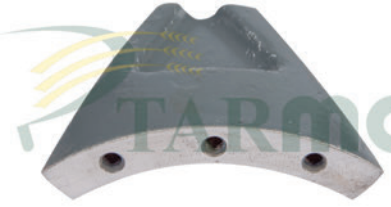


LEX

645931.2

HELEZON SİGORTA YATAĞI
(SİGORTALI)

KL-0180



TUCANO

667532.0

BATÖR KASNAK ÜÇGEN ROZETİ

KL-0181



BÜTÜN MODELLER

662624.2

BEŞİK MİLİ RULMAN YATAĞI
(GRESÖRLÜKLÜ)

KL-0182

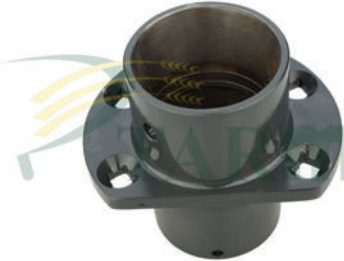


BÜTÜN MODELLER

603144.0

BEŞİK MİLİ RULMAN YATAĞI

KL-0183

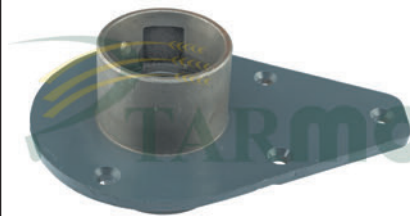


DOM-MEDION-MEGA

645007.0

BOĞAZ RULMAN YATAĞI

KL-0184

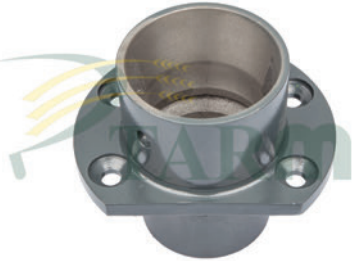


DOM

603502.0

BOĞAZ RULMAN YATAĞI
(ÜÇGEN) - (KULAKLI)

KL-0185

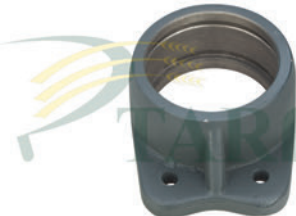


LEX

630350.2

BOĞAZ RULMAN YATAĞI

KL-0186



LEX

630357.1

BOĞAZ RULMAN ORTA YATAĞI

KL-0187

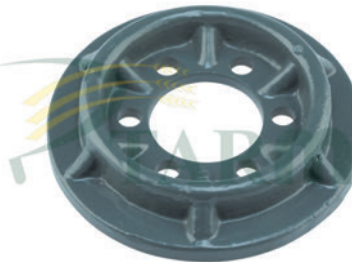


DOM 68-78-88-98

670126.2

TABLA HELEZON DİŞLİ BALATA
GÖBEĞİ

KL-0188

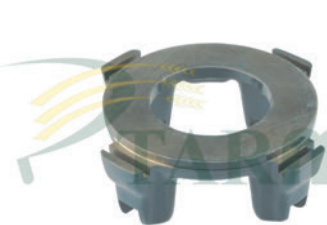


BÜTÜN MODELLER

670128.0

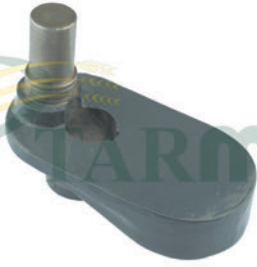
TABLA HELEZON BALATA DİSKİ

KL-0189



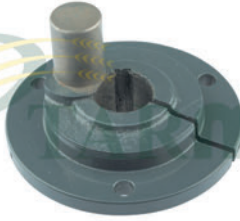
DOM

DEBRİYAJ KÖMÜR YATAĞI
(4 AYAK)

**KL-0190**

DOM 68-86-96-106

676289.0
BİÇAK KOLU EKSANTRİĞİ
(ESKİ MODEL)

KL-0191

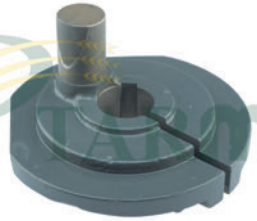
DOM-MEDION-MEGA

600790.1
BEŞİK EKSANTRİK YATAĞI
(SAĞ)

KL-0192

DOM-MEDION-MEGA

600791.1
BEŞİK EKSANTRİK YATAĞI
(SOL)

KL-0193

LEX

751859.1
BEŞİK EKSANTRİK YATAĞI
(SAĞ)

KL-0194

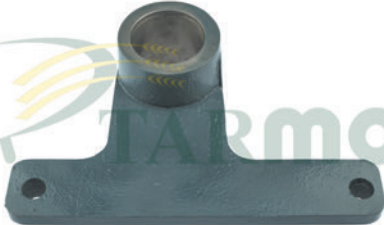
DOM 38-48-58-68-130

725012.0
BEŞİK EKSANTRİK YATAĞI
(SOL)

KL-0195

DOM 38-48-58-68-130

725013.0
BEŞİK EKSANTRİK YATAĞI
(SAĞ)

KL-0196

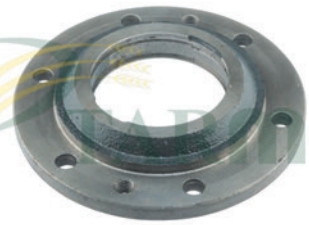
DOM 68-76-86-96-106

673347.0
BİÇAK KOLU VALS YATAĞI

KL-0197

MEDION

544116.0
TAMBUR RULMAN YATAĞI
(SAĞ)

KL-0198

MEDION

544149.0
TAMBUR RULMAN YATAĞI
(SOL)

KL-0199

DOM 68-78-88-98-JAG

687349.0
TAMBUR RULMAN YATAĞI
(SAĞ)

KL-0200

DOM 78-88-98-106

687301.1
TAMBUR RULMAN YATAĞI
(SOL)

KL-0201

DOM 68-88-MEGA-MEDION

687307.0
BATÖR RULMAN YATAĞI
(GRESÖRLÜKLÜ)

**KL-0202**

DOM 78-88-98

629485.0
BATÖR RULMAN YATAĞI
(GRESÖRLÜKLÜ) - (SAĞ)

KL-0203

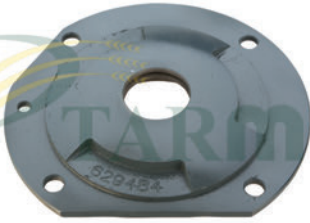
DOM 88-108-MEGA-MEDION

628725.0
BATÖR RULMAN YATAĞI
(SAĞ)

KL-0204

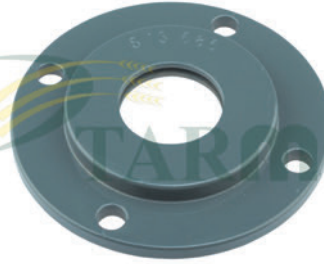
DOM 88-108-MEGA-MEDION

628726.0
BATÖR RULMAN YATAĞI
(SOL)

KL-0205

DOM78-88-98

629484.0
BATÖR RULMAN YATAĞI
(SOL)

KL-0206

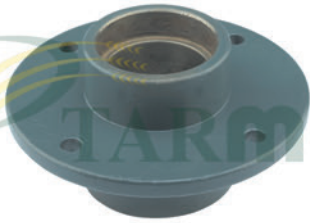
BÜTÜN MODELLER

673685.0
BATÖR RULMAN YATAĞI
(SAĞ)

KL-0207

BÜTÜN MODELLER

673686.0
BATÖR RULMAN YATAĞI
(SOL)

KL-0208

TUCANO-320-330-430-440

549743.0
RÜZGARLIK RULMAN YATAĞI

KL-0209

LEX

642495.0
TAMBUR RULMAN YATAĞI
(Ø 50mm)

KL-2210

LEX

644700.1
TAMBUR RULMAN YATAĞI
(Ø 60mm)

KL-2211

DOM

680794.0
BIÇAKKOLU BORULU RULMAN
YATAĞI - (UZUN)

KL-2213

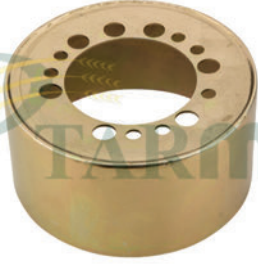
BÜTÜN MODELLER

673082.2
SARSAK ÜÇGEN YATAK

KL-2214

COM-MEGA-DOM

674497.0
ÖN BOĞAZ MİL YATAĞI
(SOL)

**KL-2215**

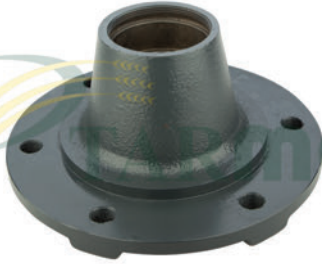
DOM-MEDION-MEGA-LEX

603059.1**BATÖR KASNAK YAY TOPLAMA
YATAĞI****KL-2216**

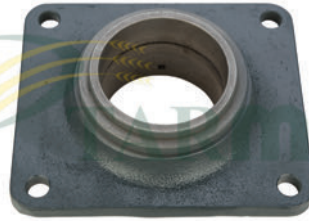
DOM-MEDION-MEGA-LEX

603397.1**HİDROLİK KASNAK YATAĞI****KL-2217**

DOM

647393.0**BEŞİK RULMAN YATAĞI
(Ø 30mm) - (4 DELİKLİ)****KL-2218**

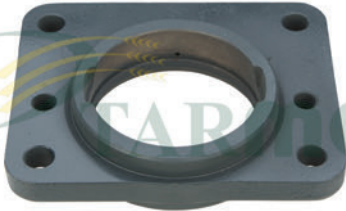
DOM-MEDION-MEGA-LEX

649959.0**ARKA TEKER POYRASI****KL-2219**

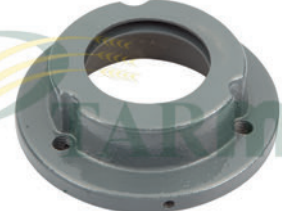
DOM-MEGA-MEDION

661193.2**BATÖR KASNAK BAĞLANTI YATAĞI
(DÖRTKÖŞE)****KL-2220**

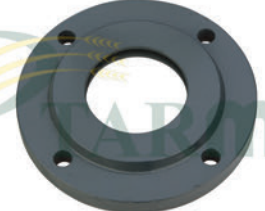
LEX

667404.2**TAMBUR RULMAN YATAĞI****KL-2221**

LEX

667618.0**TAMBUR RULMAN YATAĞI
(DÖRTKÖŞE)****KL-2222**

DOM-MEGA

674498.0**ÖN BOĞAZ MİL YATAĞI
(SAĞ)****KL-2224**

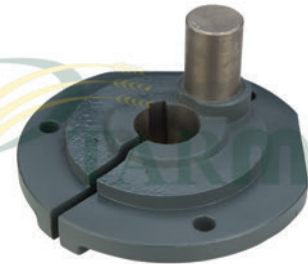
DOM

680795.0**BEŞİKKOLU RULMAN YATAĞI
(4 DELİKLİ)****KL-2225**

DOM

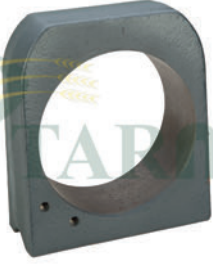
688482.0**TAMBUR RULMAN YATAĞI
(TEK SEGMANLI)****KL-2226**

LEX

736873.1**SAP KIRICI ROTÖR YATAĞI****KL-2227**

LEX

751858.1**BEŞİK EKSANTRİĞİ
(SOL)**

**KL-2228**

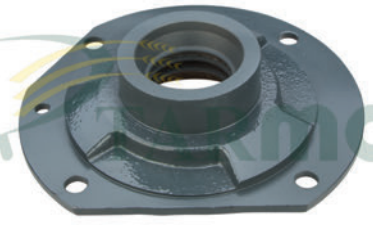
LEX

518047.0
BOĞAZ RULMAN YATAĞI

KL-2229

DOM-MEGA

626000.1
HELEZON DIŞLI YATAĞI

KL-2230

MEGA-TUCANO

628737.0
BATÖR RULMAN YATAĞI
(SOL)

KL-2231

DOM

629193.2
TAMBUR RULMAN YATAĞI

KL-2233

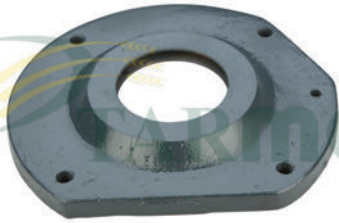
DOM-MEDION-MEGA

629423.0
TAMBUR RULMAN YATAĞI
(SAĞ)

KL-2234

DOM-MEDION-MEGA-LEX

644415.0
BATÖR RULMAN YATAĞI

KL-2235

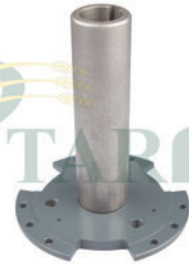
DOM-MEDION-MEGA-LEX

644416.0
BATÖR RULMAN YATAĞI
(GRESÖRLÜKLÜ)

KL-2236

MEGA-LEX

646554.0
TAMBUR RULMAN YATAĞI

KL-2238

TUCANO 320-330

603065.1
BATÖR KASNAK ROZET POYRASI

KL-2239

LEX

667532.0
BATÖR KASNAK ROZET POYRASI

KL-2240

LEX

670807.1-744969.1
BATÖR DEVİR YATAĞI
(3 KULAKLI) - (TAKIM)

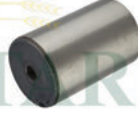
KL-2242

LEX

087652.0
BATÖR DEVİR YATAK PİMİ

**KL-2243**

744966.1
BATÖR DEVİR YATAĞI
(ÜÇGEN) - (BOŞ)

KL-2245

670809.0
BATÖR DEVİR YATAK PİSTON MİLİ

KL-2246

629883.0
BATÖR KASNAK ROZET POYRASI
(SADECE POYRA VE ROZETLER)

KL-2247

749911.1
BATÖR KASNAK YAYI

KL-2248

629828.0
BATÖR KASNAK YAYLI YATAK
(ROTÖRÜN)

KL-2250

610463.0
TABLA HELEZON BALATA DİSKİ
(YILDIZ)

KL-2251

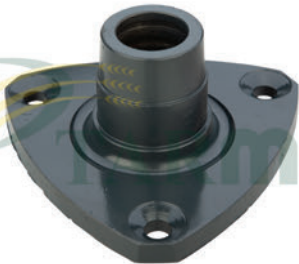
604269.0-610464.0
TABLA HELEZON BALATA YATAĞI

KL-2252

670218.2
DOLAP KASNAK MİL YATAĞI

KL-2253

735436.0
TABLA HELEZON MİL YATAĞI

KL-2255

649666.0
BATÖR DEVİR YATAĞI
(3 KULAKLI) - (BOŞ)

KL-2256

688954.0-626782.1
BİÇAK ÜST BASKISI
(ÇELTİK İÇİN) - (688955.0)

KL-2257

766961.0
BİÇAK BASKISI
(ÜÇ BURUNLU) - (ÇELTİK İÇİN)

**KL-2262**

DOM-LEX-MEDION-MEGA

649960.0
ARKA TEKER POYRA KAPAĞI

KL-2263

LEX-TUCANO

630555.1
BOĞAZ BAĞLANTI YATAĞI
(SOL)

KL-2264

LEX-TUCANO

630556.1
BOĞAZ BAĞLANTI YATAĞI
(SAĞ)

KL-2265

DOM-LEX-TUCANO-MEDION

642366.0
BATÖR RULMAN YATAK MAŞON
SOMUNU

KL-2266

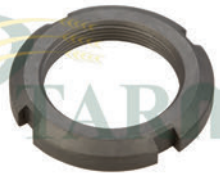
LEX

669639.0
BATÖR RULMAN YATAK MAŞON
SOMUNU

KL-2267

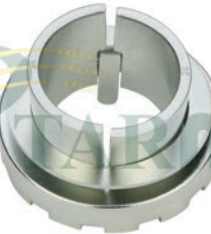
DOM-LEX-TUC-MED

610359.1
BATÖR RULMAN YATAK MAŞON
SOMUNU

KL-2268

DOM-LEX-TUC-MED

752212.1
SARSAK KRANK MAŞON SOMUNU

KL-2269

DOM-TUCANO-MEDION

735013.0
SARSAK KRANK MAŞONU
(35'LİK)

KL-2271

DOM-TUCANO-MEGA

752138.1
SARSAK KRANK MAŞON PULU
(TIRTIRLI)

KL-2272

DOM-LEX-TUC-MED

610338.0
BATÖR MAŞON PULU
(TIRTIRLI)

KL-2273

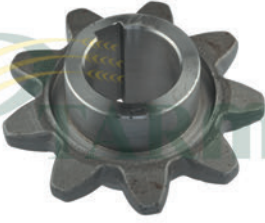
LEX

669640.0
BATÖR MAŞON PULU
(TIRTIRLI)

KL-0210

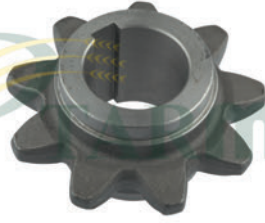
DOM-68-78-88-98-108

670489.1
BOĞAZ GÖTÜRÜCÜ DİŞLİ
(Z-9) - (Ø 40mm) - (DÖVME)

**KL-0211**

DOM-68-78-88-98-108

680582.3
BOĞAZ GÖTÜRÜCÜ DİŞLİ
(Z-9) - (Ø 45mm) - (DÖVME)

KL-0212

BÜTÜN MODELLER

650869.0
BOĞAZ GÖTÜRÜCÜ DİŞLİ
(Z-9) - (Ø 50mm) - (DÖVME)

KL-0213

DOM-MEGA-MEDIAN

650787.0
BOĞAZ GÖTÜRÜCÜ DİŞLİ
(Z-9) - (FREZELİ) - (DÖVME)

KL-0214

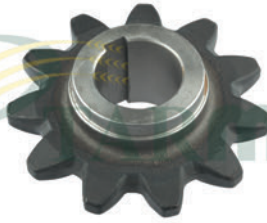
DOM-76-86-96-106

603507.0
BOĞAZ GÖTÜRÜCÜ DİŞLİ
(Z-11) - (Ø 40mm) - (DÖVME)

KL-0215

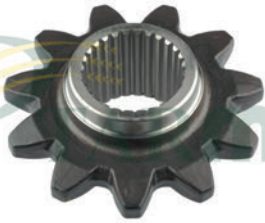
DOM-76-86-96-106

603508.0
BOĞAZ GÖTÜRÜCÜ DİŞLİ
(Z-11) - (Ø 45mm) - (DÖVME)

KL-0216

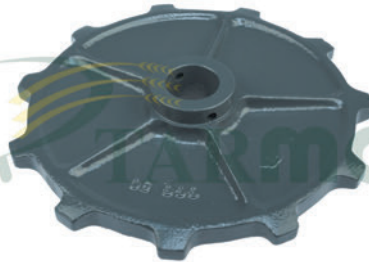
LEX-TUCANO

630351.0
BOĞAZ GÖTÜRÜCÜ DİŞLİ
(Z-11) - (Ø 50mm) - (DÖVME)

KL-0217

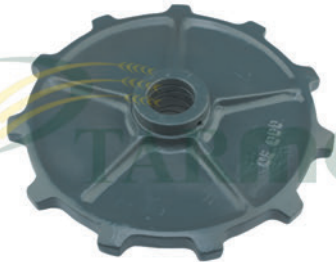
LEX

630635.0
BOĞAZ GÖTÜRÜCÜ DİŞLİ
(Z-11) - (FREZELİ) - (DÖVME)

KL-0218

DOM-68-78-88-98-108

603513.0
BOĞAZ GÖTÜRÜCÜ DİŞLİ
(Z-11) - (DELİKLİ) - (SAĞ)

KL-0219

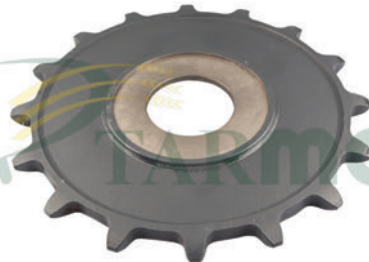
DOM-68-78-88-98-108

603514.1
BOĞAZ GÖTÜRÜCÜ DİŞLİ
(Z-11) - (DELİKSİZ) - (SOL)

KL-0220

LEX

755482.0
TABLA HELEZON DİŞLİSİ
(Z-29)

KL-0221

DOM-MERKANT

651024.2
TABLA HELEZON DİŞLİSİ
(Z-16)

KL-0222

DOM-MEGA

753534.0
TABLA HELEZON DİŞLİSİ
(ASA50) - (GÖBEĞİ DELİKLİ)

**KL-0223**

DOMI-MEGA-MEDION

503814.2
TABLA HELEZON DIŞLİSİ
(Z-14) - (ASA 60) - (GÖBEKLİ)

KL-0224

503995.1
ZİNCİR GERĞİ DIŞLİSİ
(Z-14) - (ASA 60) - (TAKIM)

KL-0225

DOMI-MEDION-MEGA

503937.2
ZİNCİR GERĞİ DIŞLİSİ
(Z-14) - (HELEZONDA) - (ASA 60)

KL-0226

DOM-MEGA

673309.1
ZİNCİR GERĞİ DIŞLİSİ
(Z-15) - (HELEZONDA) - (ASA 50)

KL-0227

DOM-MEGA

673329.1
ZİNCİR GERĞİ DIŞLİSİ
(Z-15) - (HELEZONDA) - (TAKIM)

KL-0228

DOMI-MEDION-MEGA

670145.3
TABLA HELEZON DIŞLİSİ
(Z-56) - (ASA 60) - (ÇELİK)

KL-0229

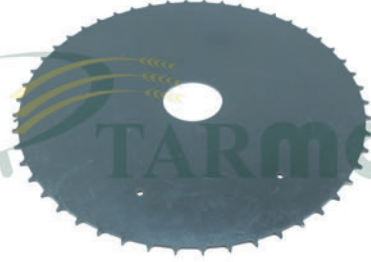
DOM-MEGA

645932.1
TABLA HELEZON DIŞLİSİ
(Z-56) - (ASA 60) - (ÇELİK)

KL-0230

DOMI-LEX-MEGA

665155.0
TABLA HELEZON DIŞLİSİ
(Z-60) - (ASA 60) - (ÇELİK)

KL-0231

DOMI-LEX-MEDION-MEGA

645992.0
DOLAP TIRMIK DIŞLİSİ
(Z-50) - (ASA 50)

KL-0232

DOMI-LEX-MEGA

673327.1
DOLAP TIRMIK ÇİFTLİ DIŞLİ
(Z-58 / 14) - (ASA 50)

KL-0233

DOMI

629670.0
BOŞALTICI HELEZON DIŞLİSİ
(Z-50) - (ASA 60)

KL-0234

DOMI-LEX-MEGA

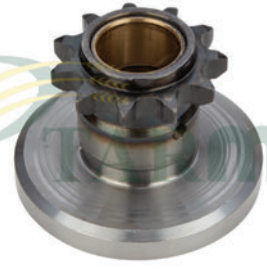
670203.0
TABLA KAŞNAK DIŞLİSİ
(Z-24) - (ASA 50)

**KL-0235**

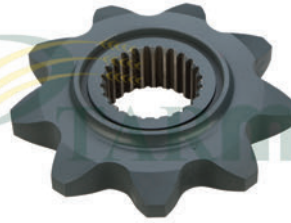
DOM-LEX-MEGA

629982.1**TABLA KASNAK DİŞLİSİ**
(Z-19) - (ASA 50)**KL-0236**

LEX-TUCANO

666911.0**TABLA HELEZON DİŞLİSİ**
(Z-50) - (ASA 60H)**KL-0237**

LEX

735433.2**TABLA HELEZON DİŞLİSİ**
(Z-11) - (ASA 60)**KL-0238****TABLA HELEZON DİŞLİSİ**
(Z-56)**KL-0239**

JAG

912185.0**BOĞAZ DİŞLİSİ**
(Z-9)**KL-0240**

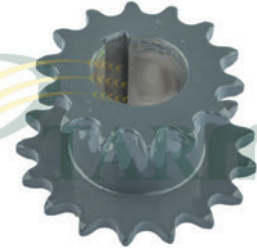
BÜTÜN MODELLER

809053.0**ELEVATÖR ÇANAK DİŞLİ**
(Z-16) - (BOŞ)**KL-0241**

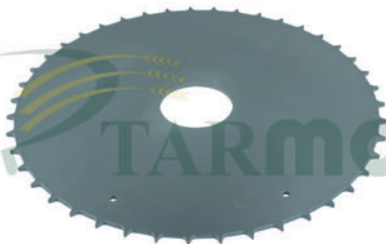
BÜTÜN MODELLER

809052.1**ELEVATÖR ÇANAK DİŞLİ**
(Z-16) - (SEGMANLI) - (TAKIM)**KL-0242**

DOM

670219.0**DOLAP KASNAK ÜST DİŞLİSİ**
(Z-22)**KL-0243**

DOM-MEGA

648119.0**BOĞAZ ŞAFT MİLİ DİŞLİSİ**
(Z-14 / 17) - (SAĞ)**KL-0244**

DOM-MEGA

614992.0**KELEBEK DİŞLİSİ**
(Z-43)**KL-0245**

BÜTÜN MODELLER

645333.1**ÇİFT SIRA ZİNCİR DİŞLİ**
(Z-13 / 14) - (HELEZONUN)**KL-0246**

BÜTÜN MODELLER

678856.2**ELEVATÖR DİŞLİSİ**
(Z-7) - (Ø 26mm) - (DÖVME)

**KL-0247**

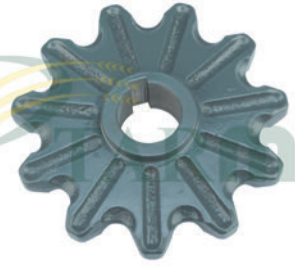
BÜTÜN MODELLER

674143.4
ELEVATÖR DİŞLİSİ
(Z-7) - (Ø 30mm) - (DÖVME)

KL-0248

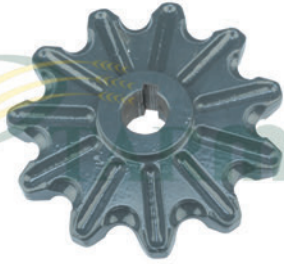
BÜTÜN MODELLER

674406.1
ELEVATÖR DİŞLİSİ
(Z-7) - (Ø 35mm) - (DÖVME)

KL-0249

LEX

735895.0
ELEVATÖR KOVA DİŞLİSİ
(Z-11) - (Ø 35mm) - (SFERO)

KL-0250

LEX

735896.0
ELEVATÖR KOVA DİŞLİSİ
(Z-11) - (Ø 26mm) - (SFERO)

KL-0251

LEX

735949.2
ELEVATÖR DİŞLİSİ
(Z-17)

KL-0252

LEX

757271.0
ELEVATÖR DİŞLİSİ
(Z-24)

KL-0253

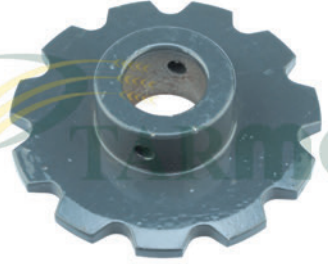
LEX

735355.0
ELEVATÖR DİŞLİSİ
(Z-11)

KL-0254

MEGA

639595.1
ELEVATÖR DİŞLİSİ
(Z-23)

KL-0255

DOM

600967.1
ELEVATÖR DİŞLİSİ
(Z-11)

KL-0256

DOM

605134.1
DEPO BOŞALTICI HELEZON DİŞLİSİ
(Z-17)

KL-0257

DOM

605421.1
DEPO BOŞALTICI DİŞLİ
(Z-20)

KL-0258

DOM

605481.0
DEPO BOŞALTICI HELEZON DİŞLİSİ
(Z-23)

**KL-0259**

DOM

605484.0**DEPO BOŞALTICI HELEZON DİŞLİSİ
(Z-17) - (KÜÇÜK)****KL-0260**

LEX

748596.0**BOŞALTICI ELEVATÖR DİŞLİSİ
(Z-23)****KL-0261**

LEX

748595.0**BOŞALTICI ELEVATÖR DİŞLİSİ
(Z-20) - (ALT)****KL-0262**

DOM

673330.1**TABLA KELEBEK DİŞLİSİ****KL-0263**

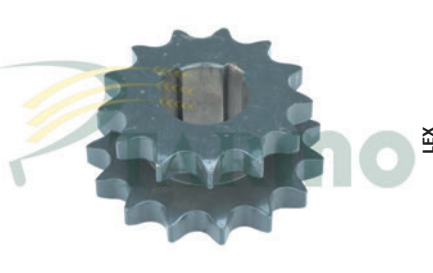
DOM-MEGA-MEDION

642485.0**TABLA HELEZON ÜST DİŞLİ
(Z-14 / 14)****KL-0264**

LEX-MEDION

608985.0**BOŞALTICI HELEZON DİŞLİSİ
(Z-50) - (GÖBEKLİ)****KL-0265**

LEX

818767.0**TABLA HELEZON DİŞLİSİ
(Z-14) - (KÜÇÜK)****KL-0266**

LEX

754009.0**TABLA HELEZON ÇİFT DİŞLİ
(Z-13 / 15)****KL-0267**

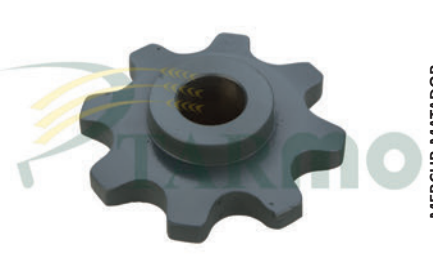
DOM-MEGA

753533.0**TABLA HELEZON ÜST DİŞLİSİ
(Z-58)****KL-0268**

DOM 96-98-108

682993.1**BOŞALTICI HELEZON DİŞLİSİ
(Z-50) - (ASA 60) - (GÖBEKLİ)****KL-0269**

LEX

176932.0**TABLA HELEZON DİŞLİSİ
(Z-68) - (ÇELTİK İÇİN)****KL-0270**

MERCUR-MATADOR

610688.0**ELEVATÖR DİŞLİSİ
(Z-8) - (Ø 30mm)**

**KL-0271**

DOM-MERCUR-MERCATOR

503030.0
ELEVATÖR DİŞLİSİ
(Z-7) - (Ø 26mm)

KL-0272

MERCUR-MERCATOR

503027.1
ELEVATÖR DİŞLİSİ
(Z-7) - (Ø 30mm)

KL-0273

DOM

626798.0
DOLAP TIRMIK DİŞLİSİ
(Z-50) - (ASA 2050)

KL-0274

LEX

795449.0
ELEVATÖR DİŞLİSİ
(Z-11) - (Ø 39mm)

KL-0275

DOM

619272.1
ELEVATÖR DİŞLİSİ
(Z-14) - (Ø 30mm)

KL-0276

TUCANO

646126.1
ELEVATÖR DİŞLİSİ
(Z-19) - (TANE)

KL-0277

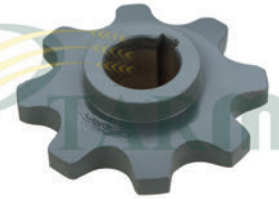
LEX

734986.1
BOŞALTICI DİŞLİ
(Z-15)

KL-0278

LEX

755422.0
BOŞALTICI DİŞLİ
(Z-40)

KL-0279

DOM 38-48-58

610199.0
ELEVATÖR DİŞLİSİ
(Z-8) - (Ø 35mm)

KL-0282

BÜTÜN MODELLER

676235.3-626295.1
ZİPKA İKİLİ
(DÖVME) - (648406.0)

KL-0283

BÜTÜN MODELLER

676249.1-626294.0
ZİPKA İKİLİ
(BAŞ KISMA TAKILAN) - (DÖVME)

KL-0284

BÜTÜN MODELLER

676241.4-626296.1
TEKLİ ZİPKA
(MASTAR TAMAMLAYICI)

**KL-0285**

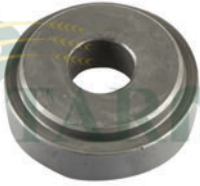
BÜTÜN MODELLER

611203.1
BIÇAK**KL-0290**

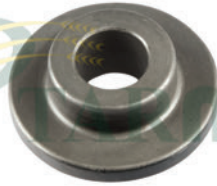
LEX

736872.0
SAP KİYICI BIÇAK
(Ø 20mm) - (173x52x4mm)**KL-0291**

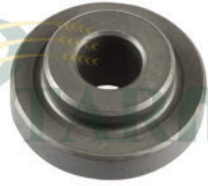
BÜTÜN MODELLER

060017.2
SAP KİYICI BIÇAK
(Ø 18mm) - (173x50x3mm)**KL-0293**

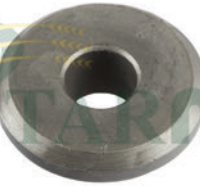
BÜTÜN MODELLER

060015.0
SAP KİYICI BIÇAK İÇ YÜKSÜĞÜ
(DIŞ Ø 25mm) - (İÇ Ø 10,50mm)**KL-0294**

BÜTÜN MODELLER

060016.2
SAP KİY. BIÇAK DIŞ YÜKSÜĞÜ
(DIŞ Ø 18mm) - (İÇ Ø 10,50mm)**KL-0295**

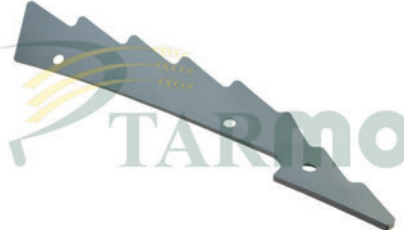
LEX-TUCANO

736871.2
SAP KİY. BIÇAK İÇ YÜKSÜĞÜ
(DIŞ Ø 20mm) - (İÇ Ø 10,50mm)**KL-0296**

LEX-TUCANO

736922.0
SAP KİY. BIÇAK DIŞ PULU
(DIŞ Ø 30mm) - (İÇ Ø 10,50mm)**KL-2993**

LEX

782505.1
ROTOR LAMASI
(TIRTIRLI) - (UZUN) - (460x135x6mm)**KL-2994**

LEX

782530.1
ROTOR LAMASI
(TIRTIRLI) - (UZUN) - (460x135x6mm)**KL-2995**

LEX

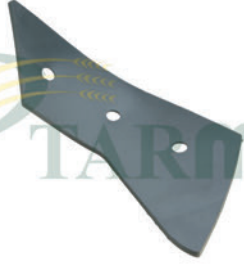
782531.0
ROTOR LAMASI
(DÜZ) - (UZUN) - (490x120x6mm)**KL-2996**

LEX

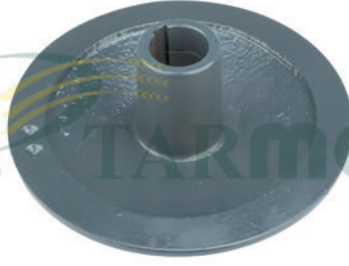
782510.0
ROTOR LAMASI
(DÜZ) - (UZUN) - (490x120x6mm)**KL-2997**

LEX

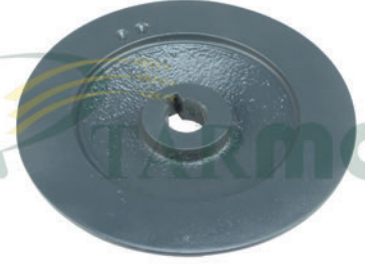
782507.0
ROTOR LAMASI
(DÜZ) - (KISA) - (229x175x6mm)

**KL-2998**

LEX

782528.0**ROTOR LAMASI
(DÜZ) - (KISA) - (229x175x6mm)****KL-0300**

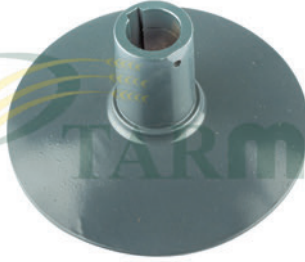
DOM-LEX-MEGA

670287.0**DOLAP ÜST KASNAĞI
(POYRALI TARAF)****KL-0301**

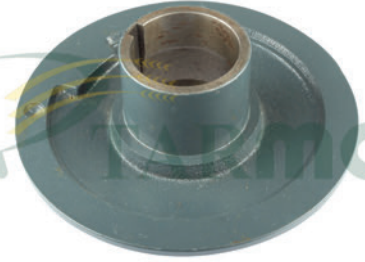
DOM-LEX-MEGA

670215.1**DOLAP ÜST KASNAĞI
(KAMALI TARAF)****KL-0302**

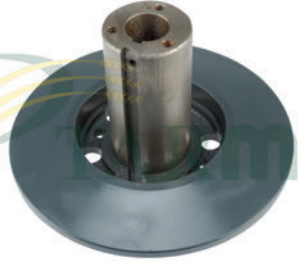
DOM-LEX-MEGA

670202.1**DOLAP ALT KASNAĞI
(DİŞLİLİ TARAF)****KL-0303**

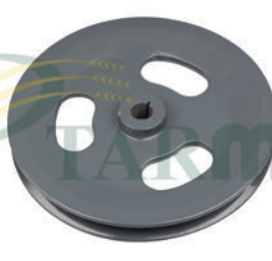
DOM-LEX-MEGA

670288.1**DOLAP ALT KASNAĞI
(POYRALI TARAF)****KL-0304**

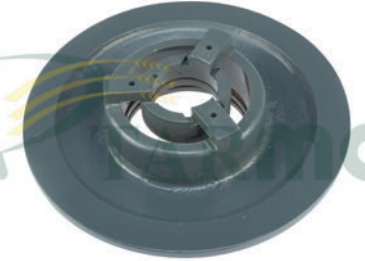
DOM-LEX-MEGA

629654.0**RÜZGARLIK KASNAĞI
(TEK TARAF)****KL-0305**

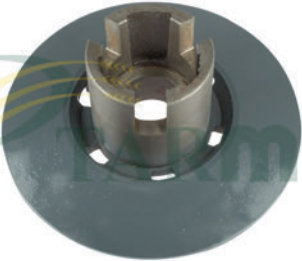
DOM-LEX-MEGA

629653.1**RÜZGARLIK KASNAĞI
(BOĞAZLI TARAF)****KL-0306**

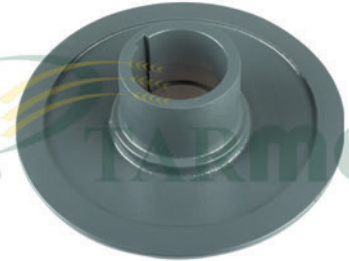
BÜTÜN MODELLER

683303.2**HİDROLİK POMPA KASNAĞI****KL-0307**

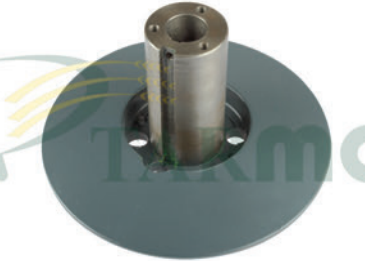
DOM-MEDION-MEGA

629267.0**KÖRÜK KASNAĞI
(DİSK TARAFI)****KL-0308**

DOM-MEDION-MEGA

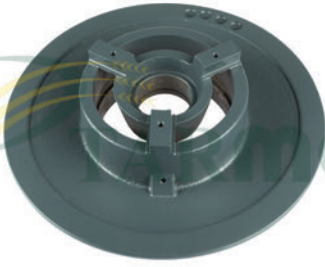
629268.0**KÖRÜK KASNAĞI
(POYRALI TARAF)****KL-0309**

DOM-LEX-MEGA

603408.0**KÖRÜK KASNAĞI ÜST
(DİSK TARAFI)****KL-0310**

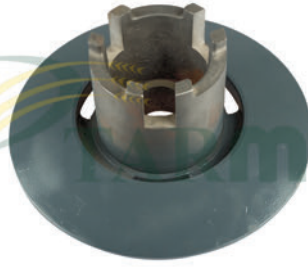
DOM-LEX-MEGA

**603406.0-603407.1
KÖRÜK KASNAĞI ÜST
(POYRALI TARAF)**

**KL-0311**

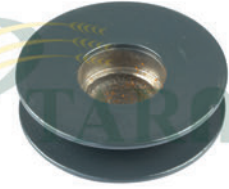
DOM-LEX-MEGA

603403.0-749999.0
KÖRÜK KASNAĞI ALT
(BURÇLU TARAF)

KL-0312

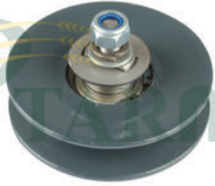
DOM-LEX-MEGA

603402.0-749997.0
KÖRÜK KASNAĞI ALT
(POYRALI TARAF)

KL-0313

DOM-MEDION-MEGA

773231.1
SARSAK GERĞİ KASNAĞI
(AVARA)

KL-0314

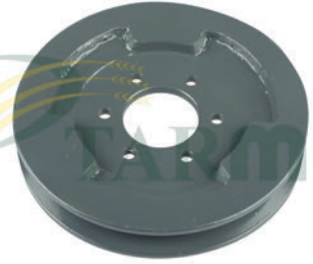
DOM-MEDION-MEGA

773232.0
SARSAK GERĞİ KASNAĞI
(AVARA) - (RULMANLI)

KL-0316

DOM

724128.3
RÜZGARLIK KASNAĞI
(KANALLI)

KL-0318

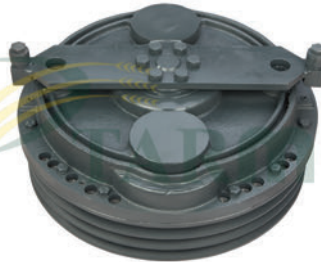
DOM

673715.1
TIRMIK GERĞİ KASNAĞI

KL-0319

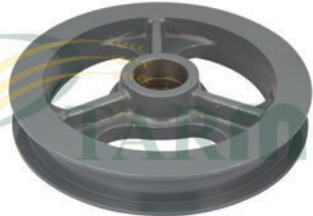
DOM-MED-MEGA-TUC

772169.1
SARSAK AVARA KASNAK

KL-0320

DOM-MED-MEGA-TUC

628724.1
DEVİR DÜŞÜRÜCÜ REDÜKTÖR
KASNAK - (KOMPLE)

KL-0321

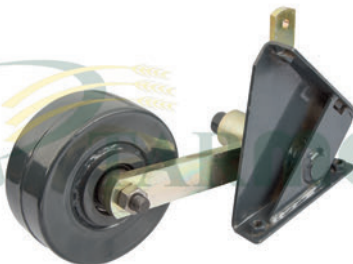
BÜTÜN MODELLER

720792.1
BEŞİK AVARA KASNAK
(Ø 220mm)

KL-0322

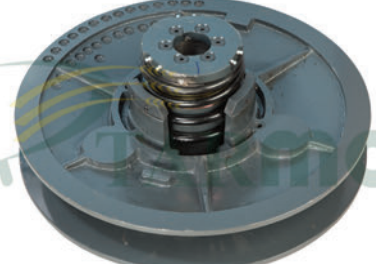
DOM-MEDION-MEGA

661194.0
BATÖR AVARA KASNAĞI

KL-0323

BÜTÜN MODELLER

644467.0
PATOZ AVARA KASNAK
(KOLU İLE KOMPLE)

KL-0324

LEX

667418.1
BATÖR KASNAĞI
(KOMPLE)

**KL-0325**

LEX

355752.0
BATÖR KASNAĞI
(KOMPLE) - (YAYLI)

KL-0326

LEX

660917.2
BATÖR KASNAĞI
(KOMPLE) - (KALIN PİMLİ)

KL-0327

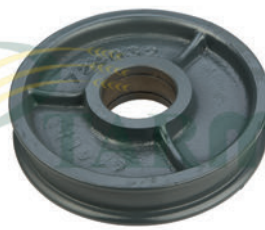
LEX

660922.2
ROTOR KASNAĞI
(HİDROLİK SİSTEM) - (KOMPLE)

KL-0328

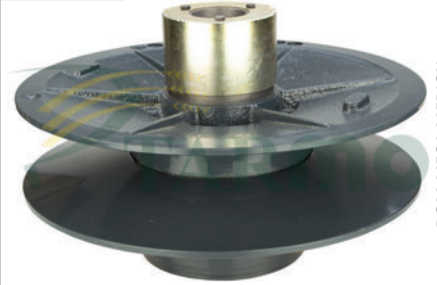
DOM-MEDION-MEGA

724375.0
TABLA AVARA KASNAK

KL-0329

DOM-LEX-MEGA-JAG

724032.1
TABLA AVARA KASNAK

KL-3291

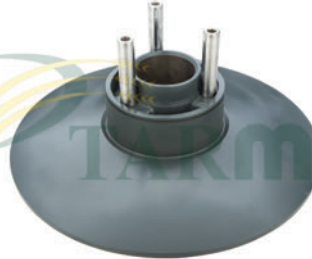
DOM-MEGA-MEDION

661228.0
BATÖR DEVİR DÜŞÜRÜCÜ KASNAĞI
(KOMPLE)

KL-3292

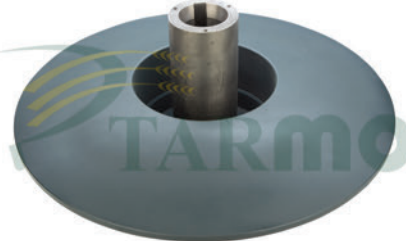
TUCANO 320-330

603313.2
BATÖR KASNAĞI
(YAYLI TARAF)

KL-3295

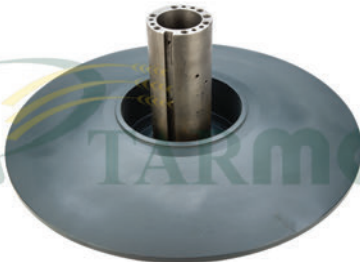
LEX

667418A
BATÖR KASNAĞI
(POYRALI TARAF)

KL-3296

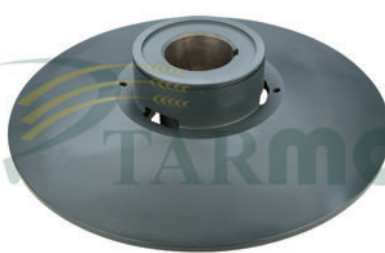
LEX

667418B
BATÖR KASNAĞI
(DAMAKLI TARAF)

KL-3297

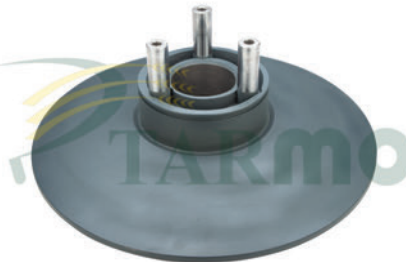
LEX

660922A
ROTOR KASNAĞI
(PİMLİ TARAF) - (İNCE PİM)

KL-3298

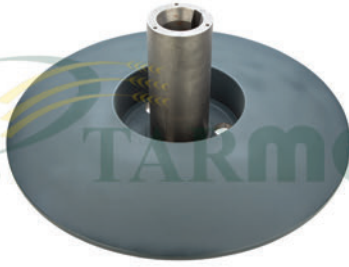
LEX

660922B
ROTOR KASNAĞI
(POYRALI TARAF)

KL-3299

LEX

660917A
ROTOR KASNAĞI
(PİMLİ TARAF) - (KALIN PİM)

**KL-3300**

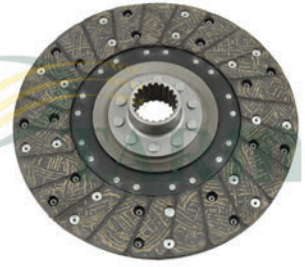
LEX

660917B
ROTOR KASNAĞI
(POYRALI TARAF)

KL-0330

DOM 68

679995.1-643605.1
DEBRİYAJ BASKISI
(KOMPLE)

KL-0331

DOM 68-78-88-JAG 800

679996.1-694083.0
DEBRİYAJ BALATASI
(TRAKPAR)

KL-0332

DOM-MEDION-MEGA

619510.1-610330.1
TABLA HELEZON KAVRAMA BALATASI
(KÜÇÜK)

KL-0333

DOM-LEX-MED-MEGA-JAG

648507.1
TABLA HELEZON BALATASI
(BÜYÜK)

KL-0334

DOM-JAG

631663.0
DEBRİYAJ KÖMÜRÜ

KL-0339

DOM

DEVİRDAlM

KL-0340

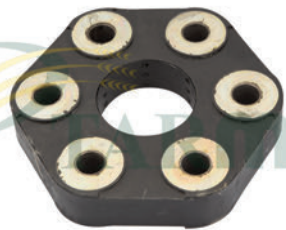
DOMINATOR

655340.0
FREN MERKEZİ
(ÜST)

KL-0341

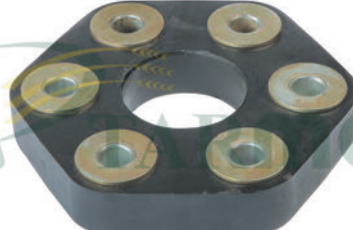
DOM 48-58-68-78-88-98

655339.1
FREN MERKEZİ
(ALT)

KL-0342

DOM-MEGA-JAG

679892.0-657556.0
VOLANT KAVRAMA TAKOZU
(798397.0-798398.0)

KL-0343

BÜTÜN MODELLER

624545.1-796144.0
VOLANT KAVRAMA TAKOZU

KL-0344

BÜTÜN MODELLER

679476.1
HİDROLİK POMPA HORTUMU

**KL-0345**

DOM

729445.0
KUMANDA KOL LASTİĞİ

KL-0346

BÜTÜN MODELLER

654587.0-941495.0
MAFSAL ISTAVROZU

KL-0347

BÜTÜN MODELLER

972580.0
MAFSAL ISTAVROZU

KL-0348

DOM-MEGA

650170.0
TABLO HELEZON HAREKET ŞAFTI

KL-0349

MEGA-MEDION

648159.0
TABLO HELEZON HAREKET ŞAFTI

KL-0350

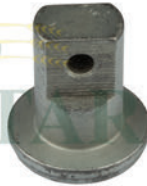
DOM-LEX-MEGA

648068.3
HELEZON PARMAĞI
(245mm - GALVANİZ - SULU - UZUN)

KL-0351

DOM-MEGA

603759.1
HELEZON PARMAĞI - (Ø16mm)
(205mm - GALVANİZ - SULU - KISA)

KL-0352

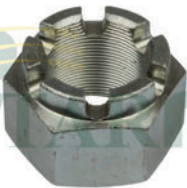
LEX

626963.1-626627.0
TIRMIK TAPASI
(UZUN) - (SAĞ)

KL-0353

LEX

626628.0-626964.1
TIRMIK TAPASI
(KISA) - (SOL)

KL-0354

BÜTÜN MODELLER

624157.0
MOTORBAŞI KUYRUK MİLİ SOMUNU

KL-0355

DOM-LEX-JAG-MEGA

609752.0
TABLA HELEZON KUSTURUCU
MANDALI - (DÖVME)

KL-0356

TUCANO-LEX

HELEZON PARMAĞI
(270mm) - (SULU - GALVANİZ)



TARMO A.Ş.

CLAAS

www.tarmo.com.tr

KL-0357



DOM-LEX-MEDION-MEGA

643756.1

TABLA PİSTON ESNETME YAYI

KL-0358



LEX

626987.0

TIRMIK YAYI

KL-0359

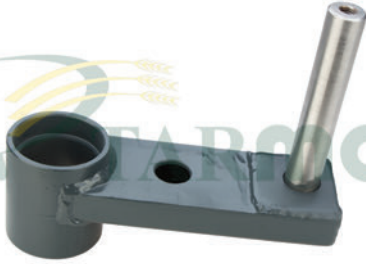


BÜTÜN MODELLER

800021.0

TIRMIK YAYI

KL-3590



DOM-MEGA-COM

670210.2

DOLAP AYAR KOLU

KL-0360



TUCANO

520902.0-520903.0

BOĞAZ GÖTÜRÜCÜ ZİNCİR
(3'LÜ TAKIM) - (TAKVİYELİ) - İTHAL

KL-0361



DOM78-88-98-108-MEDION

540033.0-540034.0

BOĞAZ GÖTÜRÜCÜ ZİNCİR
(3'LÜ TAKIM) - (TAKVİYELİ) - İTHAL

KL-0362



MEDION 340

540034.0

BOĞAZ GÖTÜRÜCÜ ZİNCİR
(4'LÜ TAKIM) - (TAKVİYELİ) - İTHAL

KL-0363



LEX

630567.2-630643.2

BOĞAZ GÖTÜRÜCÜ ZİNCİR
(4'LÜ TAKIM) - (TAKVİYELİ) - İTHAL

KL-0365



DOM78-88-98-108-MEDION

605456.2

ELEVATÖR ZİNCİRİ
(TANE) - İTHAL

KL-0366



DOM78-88-98-108-MEDION

678448.0

ELEVATÖR ZİNCİRİ
(KESMİK) - İTHAL

KL-0367



DOM78-88-98-108-MEDION

680494.0-680493.1

BOĞAZ GÖTÜRÜCÜ ZİNCİR KULAKLI
KİLİDİ - İTHAL

KL-0368



DOM78-88-98-108-MEDION

002860.0

BOĞAZ GÖTÜRÜCÜ ZİNCİR KİLİDİ
İTHAL



KL-0369



DOM75-88-98-108-MEDION

002861.0

BOĞAZ GÖTÜRÜCÜ ZİNCİR YARIM
EKİ - İTHAL

KL-0370



DOM75-88-98-108-MEDION

687545.0-639688.0

ELEVATÖR ZİNCİRİ KULAKLI KİLİDİ
İTHAL

KL-0371



BÜTÜN MODELLER

650191.2

ZİNCİR
(ASA 50-1)

KL-0372



BÜTÜN MODELLER

650174.0

ZİNCİR
(ASA 60-1)

KL-0373



BÜTÜN MODELLER

ZİNCİR
(ASA 80-1)

KL-0374



BÜTÜN MODELLER

002858.0

ZİNCİR KİLİDİ
(ASA 50-1)

KL-0375



BÜTÜN MODELLER

670251.0

ZİNCİR KİLİDİ
(ASA 60-1)

KL-0376



BÜTÜN MODELLER

ZİNCİR KİLİDİ
(ASA 80-1)

KL-0377



LEX

795362.1-553403.0

ELEVATÖR ZİNCİRİ
(TANE)

KL-0378



MEGA-TUCANO

549541.0

ELEVATÖR ZİNCİRİ
(TANE)

KL-0379



MEDION-MEGA-TUCANO

553463.0

ELEVATÖR ZİNCİRİ
(TANE)

KL-0380



LEX

735367.0-601819.0

ELEVATÖR ZİNCİRİ
(KESMİK)

**KL-0381**

LEX

ZİNCİR
(ASA 60H-1) - (TAKVİYELİ)

KL-0382

BÜTÜN MODELLER

002859.0
ZİNCİR YARIM EKİ
(ASA 50-1)

KL-0383

BÜTÜN MODELLER

ZİNCİR KİLİDİ
(ASA 60H-1)

KL-0384

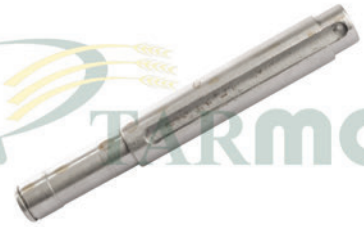
BÜTÜN MODELLER

ZİNCİR YARIM EKİ
(ASA 60H-1)

KL-0391

DOM 48-58-68-130-140

646734.0
BATÖR ÇELTİK MİLİ

KL-0392

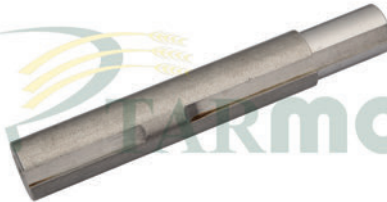
DOM-LEX-MEGA

670214.1
KÖRÜK KASNAK MİLİ

KL-0393

DOM-LEX-MEGA

670201.2
DOLAP ALT KASNAK MİLİ

KL-0394

DOM

676298.0
BIÇAKKOLU BORULU YATAK MİLİ

KL-0395

DOM

673746.0
BIÇAKKOLU VALS YATAK MİLİ

KL-0396

DOM

600410.2
BATÖR FLANŞLI MİL
(23,50cm) - (DÖVME) - (SAĞ)

KL-0397

DOM

600988.0
BATÖR FLANŞLI MİL
(21cm) - (DÖVME) - (SOL)

KL-0398

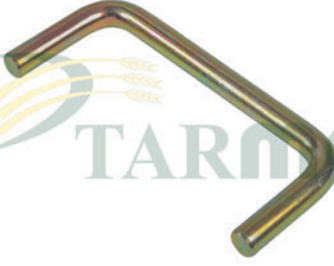
DOM 108-118

600410.3
BATÖR FLANŞLI MİL
(24cm) - (DÖVME) - (SAĞ)

**KL-0399**

DOM-MEDION

647858.1
BATÖR FLANŞLI MİL
(23cm) - (DÖVME) - (SOL)

KL-0400

DOM-LEX-MEDION-MEGA

673081.1
BEŞİK ASKI DEMİRİ

KL-0401

DOM-MEDION-MEGA-COM

600641.0
KESMİK ELEVATÖR MİLİ
(Ø 26mm) - (297mm)

KL-0402

DOM-MEDION-MEGA

600414.0
BATÖR MİLİ

KL-0403

LEX-MEGA

759641.2
ÇELTİK BALABAN MİLİ

KL-0404

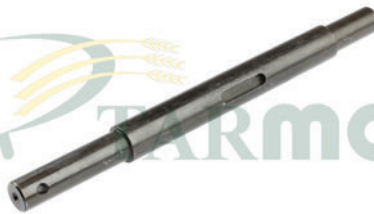
LEX

353284.0
TABLA HELEZON MİLİ
(FREZELİ)

KL-0406

BÜTÜN MODELLER

772620.0
SARSAK GERĞİ KASNAK VİDASI

KL-0407

DOM-MEDION-MEGA

678846.0
KESMİK ELEVATÖR MİLİ
(Ø 26mm) - (290,50mm)

KL-0408

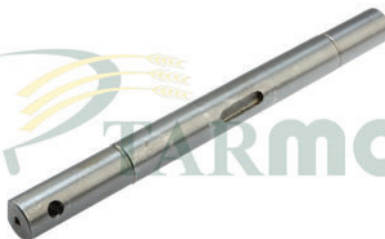
DOM-MEDION-MEGA

645006.3
ÖN BOĞAZ MİLİ
(Ø 40mm) - (1933mm)

KL-0409

DOM-MEDION-MEGA

650896.1
TABLA SENSÖR MİLİ
(Ø 20mm) - (688mm) - (SOL)

KL-0410

TUCANO-LEX

725458.0
KESMİK ELEVATÖR MİLİ
(Ø 26mm) - (261mm)

KL-0411

LEX

757105.0
KESMİK ELEVATÖR MİLİ
(Ø 35mm) - (300mm)

**KL-0412**

LEX

736056.1
BEŞİK MİLİ
(Ø 55mm) - (1881mm)

KL-0413

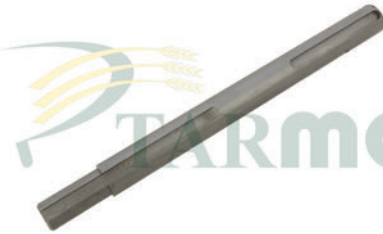
LEX

736135.0
BEŞİK MİLİ
(Ø 48mm) - (1601mm)

KL-0414

DOM-MEGA

661200.1
DEVİR DÜŞÜRÜCÜ REDÜKTÖR
ŞAPKALI MİL - (DÖVME)

KL-0415

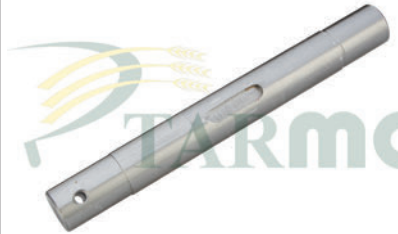
DOM 68-78-MEGA-MEDION

645342.0
TABLA HELEZON MİLİ
(Ø 30mm) - (363mm)

KL-0416

LEX-TUCANO

626308.2-626383.0
TABLA HELEZON ŞAFTI

KL-0417

MEGA-MEDION-LEX-TUCANO

735331.1
KESMİK ELEVATÖR MİLİ
(Ø 26mm) - (216mm)

KL-0421

DOM

647454.2
BEŞİKKOLU FLANŞLI MİL

KL-0422

DOM-MEGA

648164.0
ÖN BOĞAZ GÖTÜRÜCÜ MİLİ
(992mm)

KL-0423

DOM-MEGA

648179.0
ÖN BOĞAZ GÖTÜRÜCÜ MİLİ
(1446mm)

KL-0424

DOM 68-78

650835.0
ÖN BOĞAZ GÖTÜRÜCÜ MİLİ
(1284mm)

KL-0425

DOM48-58-68-130-140-150

725537.1
TAMBUR MİLİ
(1484mm)

KL-0426

LEX

667903.1
TAMBUR MİLİ
(2255,50mm)



TARMO A.Ş.

CLAAS

www.tarmo.com.tr

KL-0427



667671.0
TAMBUR MİLİ
(1975,50mm)

KL-0428



644167.2
TAMBUR MİLİ
(1898mm)

KL-0429



644517.0
TAMBUR MİLİ
(1898mm)

KL-0430



600378.2
TAMBUR MİLİ
(1619mm)

KL-0431



629692.2
TAMBUR MİLİ
(2203mm)

KL-0432



646249.3
TAMBUR MİLİ
(1638mm)

KL-0433



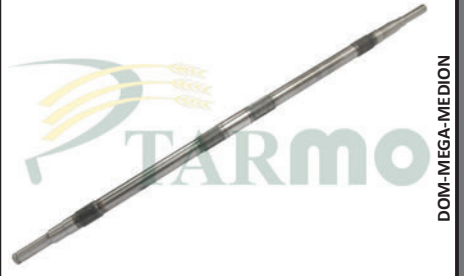
603525.4
BOĞAZ GÖTÜRÜCÜ MİLİ
(1291mm)

KL-0434



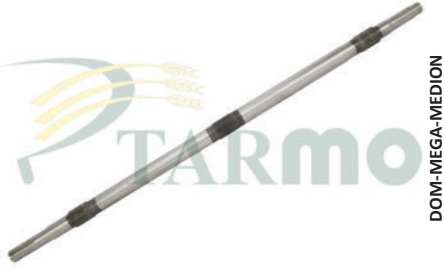
650689.0
BOĞAZ GÖTÜRÜCÜ MİLİ
(1544mm)

KL-0435



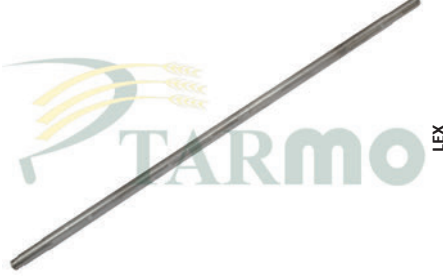
650792.1
BOĞAZ GÖTÜRÜCÜ MİLİ
(1807mm)

KL-0436



630656.0
BOĞAZ GÖTÜRÜCÜ MİLİ
(1650mm)

KL-0437



630379.0
BOĞAZ GÖTÜRÜCÜ MİLİ
(1930mm)

KL-0438

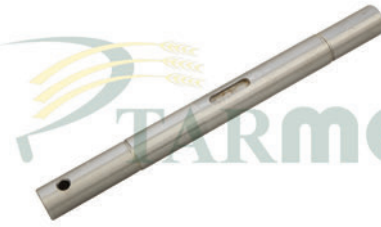


630637.1
BOĞAZ GÖTÜRÜCÜ MİLİ
(1807mm)

**KL-0439**

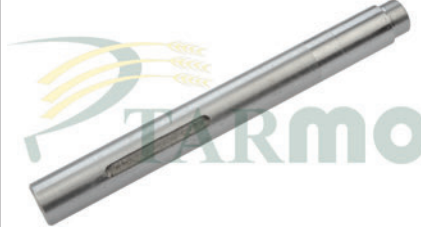
LEX

630408.1
BOĞAZ GÖTÜRÜCÜ MİLİ
(2039mm)

KL-0444

DOM

605127.3
ELEVATÖR MİLİ
(293mm)

KL-0445

TUCANO

644384.0
RÜZGARLIK MİLİ
(275mm) - (Ø 30mm)

KL-0447

COM DOM

603733.5
BOĞAZ ARKA MİLİ
(1550mm) - (Ø 45mm)

KL-0448

COM-MEGA-DOM

648184.0
BOĞAZ ÖN MİLİ
(2212mm)

KL-0449

DOM-MEGA-TUCANO

600415.0
BATÖR MİLİ
(1384mm)

KL-0450

DOM 68-78

703856.1-729488.0
SARSAK KRANKI - (Ø 31mm)
(4 SARSAK) - (KISA) - (ÖN)

KL-0451

DOM 68-78

600091.2-729490.0
SARSAK KRANKI - (Ø 31mm)
(4 SARSAK) - (UZUN) - (ARKA)

KL-0452

DOM 78-88-98

670945.2
SARSAK KRANKI - (Ø 31mm)
(5 SARSAK) - (KISA)

KL-0453

DOM 78-88-98

684021.1
SARSAK KRANKI - (Ø 31mm)
(5 SARSAK) - (UZUN)

KL-0454

DOM 98-MEDION

670945.4
SARSAK KRANKI - (Ø 35mm)
(5 SARSAK) - (KISA)

KL-0455

DOM 98-MEDION

605668.2
SAR. KRANKI - (Ø 35mm)
(5 SARSAK) - (UZUN) - (735012.0)

**KL-0456**

DOM 105-106-108

176968.0-678500.3
SARSAK KRANKI
(Ø 35mm) - (6 SARSAK)

KL-0457

DOM 105-106-108

678513.3
SARSAK KRANKI
(Ø 40mm) - (6 SARSAK)

KL-0458

DOM 68-78

726985.0
SARSAK KRANKI
(Ø 31mm) - (4 SARSAK)

KL-0459

DOM 68-78

726986.0
SARSAK KRANKI
(Ø 31mm) - (4 SARSAK)

KL-0460

DOM 68-78

726985.0
SARSAK KRANKI
(Ø 31mm) - (4 SARSAK) - (KOMPLE)

KL-0461

DOM 68-78

726986.0
SARSAK KRANKI
(Ø 31mm) - (4 SARSAK) - (KOMPLE)

KL-0462

DOM 98-MEDION

755554.0
SARSAK KRANKI - (Ø 35mm)
(5 SARSAK) - (KISA)

KL-0463

DOM 98-MEDION

735011.1
SAR. KRANKI - (Ø 35mm)
(5 SARSAK) - (UZUN) - (735012.0)

KL-0464

DOM 78-88-98

735008.0
SARSAK KRANKI - (Ø 31mm)
(5 SARSAK) - (KISA)

KL-0465

DOM 78-88-98

735012.0
SARSAK KRANKI - (Ø 31mm)
(5 SARSAK) - (UZUN)

KL-0466

DOM 105-106-108

735032.0-735034.1
SARSAK KRANKI - (Ø 35mm)
(6 SARSAK)

KL-0467

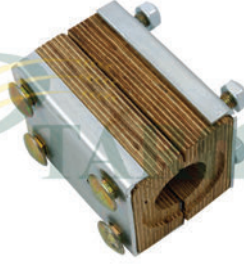
DOM 105-106-108

735033.0
SARSAK KRANKI - (Ø 40mm)
(6 SARSAK)

**KL-0469**

DOMI-MEGA-MEDION

678258.2
SARSAK TAKOZU
(Ø 35mm)

KL-0470

DOM78-88-98-108-MEDION

678258.2
SARSAK TAKOZU
(SACI, CİVATASI , ŞİMİ DAHİL)

KL-0471

DOMI-MEGA-MEDION

678522.0
SARSAK TAKOZU
(Ø 40mm)

KL-0472

DOM 68-76-78

618186.2
SARSAK TAKOZU
(Ø 31mm)

KL-0473

DOM-MEGA

618254.2
SARSAK TAKOZU
(Ø 31mm)

KL-0474

DOM-MEGA

648876.0
SARSAK KRANK DENGİ ÇUBUĞU
(İKİ UCU PLASTİK)

KL-0476

DOM 68

661667.0-600048.0
SARSAK TAKOZU
(Ø 31mm) - (DÖRTKÖŞE)

KL-0477

DOM-MEGA

661711.0-687106.0
SARSAK TAKOZU
(Ø 36mm) - (DÖRTKÖŞE)

KL-0478

DOM-MEGA

650867.0
GÖTÜRÜCÜ ZİNCİR YATAĞI
(AHŞAP)

KL-0480

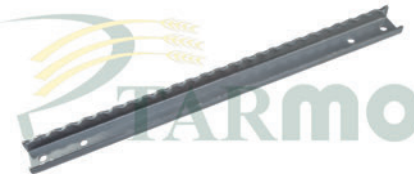
BÜTÜN MODELLER

650863.1
GÖTÜRÜCÜ PALETİ - (60,5cm)
(4mm-U-GALVANİZLİ-EZME-SAĞ)

KL-0481

BÜTÜN MODELLER

650864.1
GÖTÜRÜCÜ PALETİ - (60,5cm)
(4mm-U-GALVANİZLİ-EZME-SOL)

KL-0482

LEX

517935.0
GÖTÜRÜCÜ PALETİ
(56cm-4mm-U-GALVANİZLİ-EZME)



TARMO A.Ş.

CLAAS

www.tarmo.com.tr

KL-0483



DOM 68-78

645232.2
GÖTÜRÜCÜ PALETİ
(86cm-4mm-U-GALVANİZLİ-EZME)

KL-0484



TUCANO

520163.0
GÖTÜRÜCÜ PALETİ
(60,5cm-4mm-U-GALVANİZLİ-EZME)

KL-0485



DOM 68-76-78

603506.1
GÖTÜRÜCÜ PALETİ
(96,2cm-4mm-U-GALVANİZLİ-EZME)

KL-0486



LEX

630565.1
GÖTÜRÜCÜ PALETİ - (74cm)
(4mm-U-GALVANİZLİ-EZME-SAĞ)

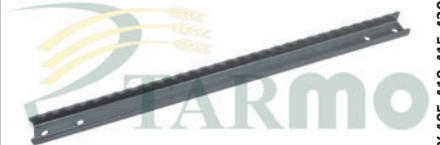
KL-0487



LEX

630566.1
GÖTÜRÜCÜ PALETİ - (74cm)
(4mm-U-GALVANİZLİ-EZME-SOL)

KL-0488



LEX 405-410-415-430

630642.1
GÖTÜRÜCÜ PALETİ
(65cm-4mm-U-GALVANİZLİ-EZME)

KL-0489



DOM 106-108-118

603679.1
GÖTÜRÜCÜ PALETİ - (76cm)
(4mm-U-GALVANİZLİ-EZME-SOL)

KL-0490



DOM 106-108-118

603681.1
GÖTÜRÜCÜ PALETİ - (76cm)
(4mm-U-GALVANİZLİ-EZME-SAĞ)

KL-0491



DOM

603742.1
GÖTÜRÜCÜ PALETİ - (65cm)
(4mm-U-GALVANİZLİ-EZME-SOL)

KL-0492



DOM

603743.1
GÖTÜRÜCÜ PALETİ - (65cm)
(4mm-U-GALVANİZLİ-EZME-SAĞ)

KL-0493



DOM 108-118-COM 228

645083.1
GÖTÜRÜCÜ PALETİ - (71cm)
(4mm-U-GALVANİZLİ-EZME-SOL)

KL-0494



DOM 108-118-COM 228

645081.1
GÖTÜRÜCÜ PALETİ - (71cm)
(4mm-U-GALVANİZLİ-EZME-SAĞ)

**KL-0495**

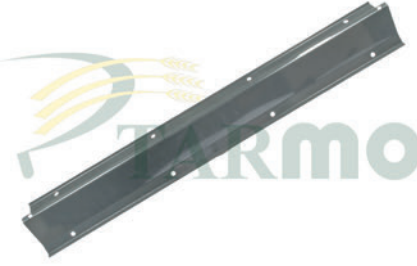
DOM 108-118-MEGA 208

650713.1
GÖTÜRÜCÜ PALETİ
(68cm-4mm-U-GALVANİZLİ-EZME)

KL-0496

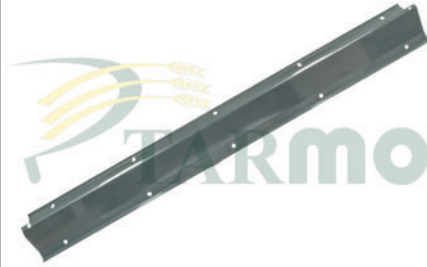
TUCANO

518241.1
GÖTÜRÜCÜ PALETİ
(47cm-4mm-EZME) - (ÇELTİK İÇİN)

KL-0501

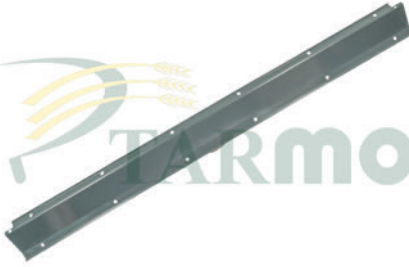
DOM

608548.1
TAMBUR V SACI
(1060x207x2mm)

KL-0502

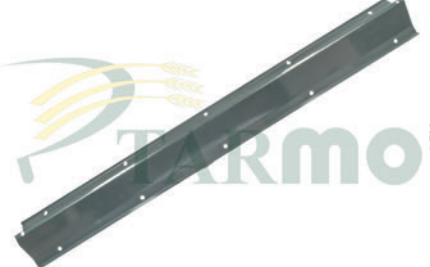
DOM-MEGA-MEDION

608549.1-555768.0
TAMBUR V SACI
(1320x207x2mm)

KL-0503

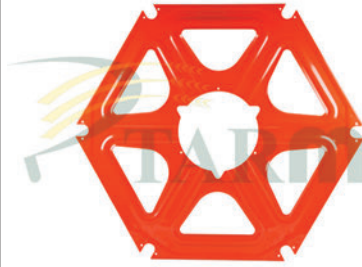
DOM-MEGA-MEDION

634981.1
TAMBUR V SACI
(1580x207x2mm)

KL-0504

LEX

508043.0-777064.0
TAMBUR V SACI
(1410x211x2mm)

KL-0505

LEX-TUCANO

626466.0
DOLAP SACI
(Ø 220mm) - (İÇİ ÜÇGEN) - (ORTA)

KL-0506

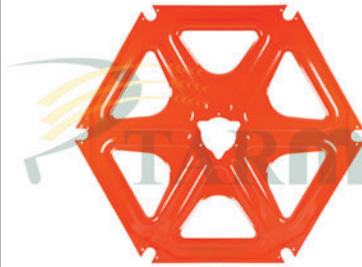
DOM-MEGA-MEDION

677474.1
DOLAP SACI
(Ø 134mm) - (İÇİ ÜÇGEN) - (SAĞ)

KL-0507

DOM-MEGA-MEDION

677070.1
DOLAP SACI
(Ø 188mm) - (İÇİ YUVARLAK) - (SOL)

KL-0508

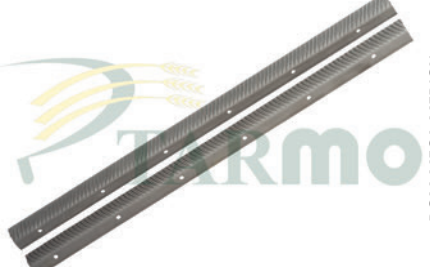
DOM-MEGA-MEDION

677318.1
DOLAP SACI
(Ø 134mm) - (İÇİ ÜÇGEN) - (ORTA)

KL-0510

DOM

177531.0
BATÖR LAMASI
(104 cm) - (6 ADET)

KL-0511

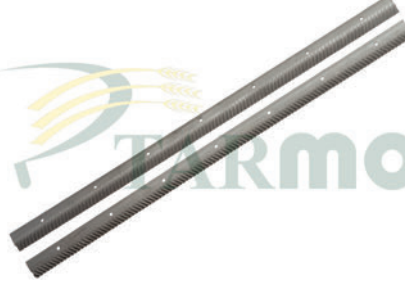
DOM-MEGA-MEDION

177532.0
BATÖR LAMASI
(130 cm) - (6 ADET)

**KL-0512**

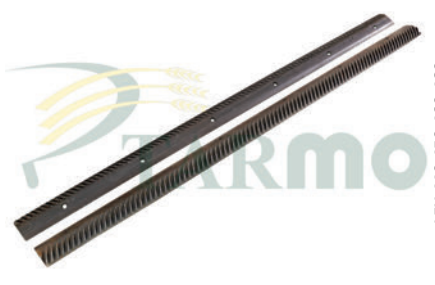
LEX

181741.0-181742.0
BATÖR LAMASI
(140 cm) - (8 ADET)

KL-0513

DOM 106-108-118-MEDION 340

177533.0
BATÖR LAMASI
(156,50 cm) - (6 ADET)

KL-0514

LEX 440-450-460-480

181743.0-181744.0
BATÖR LAMASI
(168 cm) - (8 ADET)

KL-0517

DOM-MEGA-MEDION

600735.3
BATÖR
(KOMPLE)

KL-0522

DOM-MEGA-MEDION

600471.1
BATÖR LAMA ROZETİ
(DİSK) - (KAMALI) - (SOL-SAĞ)

KL-0523

DOM-MEGA-MEDION

600104.0
BATÖR LAMA ROZETİ
(DİSK) - (KAMASIZ) - (ORTA)

KL-0524

DOM-MEGA-MEDION

618522.0
BATÖR LAMA ROZETİ
(KAMALI) - (SAĞ)

KL-0525

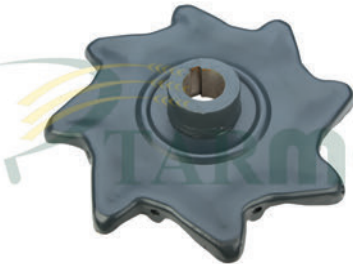
BÜTÜN MODELLER

628050.1
BATÖR ÇELTİK DİŞİ

KL-0526

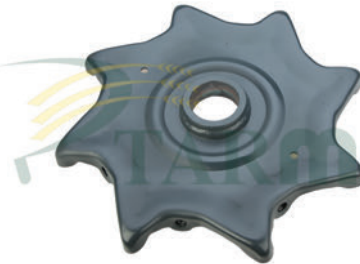
DOM

617865.0-674478.1
TAMBUR LAMA ROZETİ
(KAMALI) - (ORTA)

KL-0527

MEGA-MEDION-LEX

634977.0
TAMBUR LAMA ROZETİ
(KAMALI) - (ORTA)

KL-0528

MEGA-MEDION-LEX

634974.0
TAMBUR LAMA ROZETİ
(KAMASIZ) - (SAĞ-SOL)

KL-0529

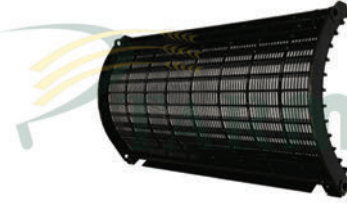
MEGA-MEDION-LEX

674479.0-617601.0
TAMBUR LAMA ROZETİ
(KAMASIZ) - (SAĞ-SOL)

**KL-0530**

DOM 68-78

601750.1-726973.0
KONTRBATÖR
(4 SARSAK) - (617714.0)

KL-0531

DOM 86-88-96-98

601754.1
KONTRBATÖR
(5 SARSAK)

KL-0534

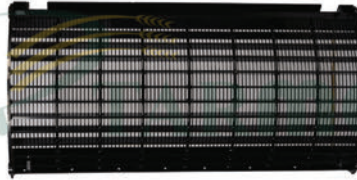
LEX 540-560-580

777249.1
KONTRBATÖR
(3 PARÇA)

KL-0535

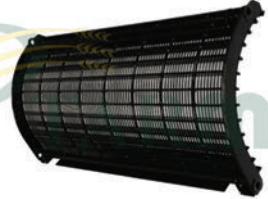
DOM 88-98-108-MED 310

756070.0-662815.0
KONTRBATÖR
(3 PARÇA)

KL-0536

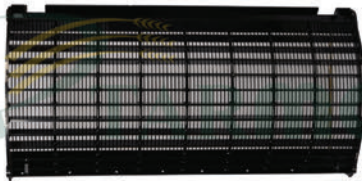
DOM 108-118

600230.3
KONTRBATÖR
(MISIR İÇİN) - (6 SARSAK)

KL-0537

DOM 106-108-118

601753.1
KONTRBATÖR
(BUĞDAY İÇİN) - (6 SARSAK)

KL-0538

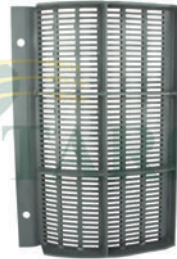
DOM 88-98-TUCANO 320

662817.0
KONTRBATÖR
(MISIR İÇİN) - (3 PARÇA)

KL-0539

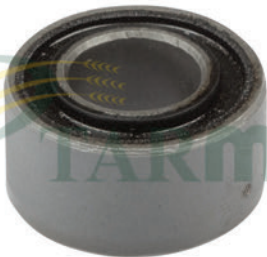
DOM 108-118-MED 340

662808.0
KONTRBATÖR
(BUĞDAY İÇİN)

KL-5390

DOM 108-118-MED 340

662811.0
KONTRBATÖR
(MISIR İÇİN)

KL-0540

BÜTÜN MODELLER

647464.0
BEŞİK TAKOZU
(16x32x17mm)

KL-0541

BÜTÜN MODELLER

647465.0
BEŞİK TAKOZU
(18x34x42mm)

KL-0542

BÜTÜN MODELLER

647467.0
BEŞİK TAKOZU
(25x40x40mm)

**KL-0543**

BÜTÜN MODELLER

647429.0
BEŞİK TAKOZU
(25x50x50mm)

KL-0544

BÜTÜN MODELLER

647431.0
BEŞİK TAKOZU
(36x70x90mm)

KL-0545

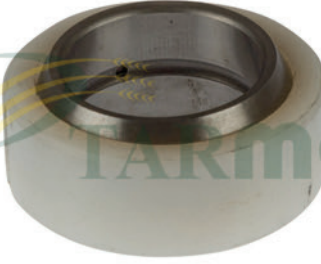
LEX

687355.0
BEŞİK TAKOZU
(55x25x60mm)

KL-0546

BÜTÜN MODELLER

647430.0
BEŞİK TAKOZU
(70x36x65mm)

KL-0547

DOM-MEGA-MEDION-LEX

647466.0
BEŞİK TAKOZU
(14x35x32mm)

KL-0548

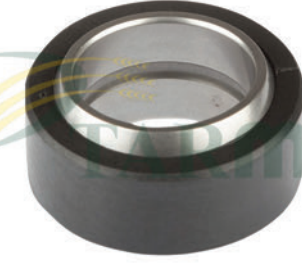
LEX

751251.0
BEŞİK TAKOZU
(18x40x25mm)

KL-0549

LEX

751252.0
BEŞİK TAKOZU
(18x40x50mm)

KL-0550

DOM-MEGA-MEDION-LEX

647468.0
BEŞİK TAKOZU
(20x45x30mm)

KL-0551

LEX

751254.0
BEŞİK TAKOZU
(20x60x50mm)

KL-0552

LEX

751335.0
BEŞİK TAKOZU
(21x41x50mm)

KL-0553

LEX

751253.0
BEŞİK TAKOZU
(25x50x56mm)

KL-0554

DOM-MEGA-MEDION-JAG

072744.0
BEŞİK TAKOZU
(30x65x70 / 40mm)

**KL-0555**

DOM-MEGA-LEX

657940.0
BEŞİK TAKOZU
(30x65x70 / 60mm)

KL-0557

DOM

605244.1
BEŞİK TAKOZU

KL-0560

DOM-MEDION

673081.1
BEŞİK ASKI KOLU

KL-0561

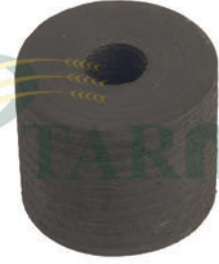
DOM-MEDION-TUCANO

678638.0
BEŞİK ASKI KOL SETİ

KL-0562

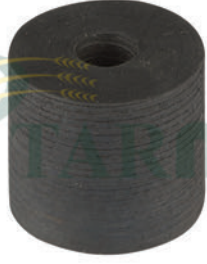
DOM

619342.0
ELEK LASTİK TAKOZU
(PRES)

KL-0563

DOM-LEX-MEGA

619342.1
ELEK LASTİK TAKOZU
(44x13x33,5mm) - (KESME)

KL-0564

DOM-LEX-MEDION-MEGA

619342.0
ELEK LASTİK TAKOZU
(44x13x35mm) - (KESME)

KL-0565

DOM-LEX-MEDION-MEGA

619298.3
ELEVATÖR ZİNCİR TAŞIYICI GETİ
(KESMİK)

KL-0566

DOM-MEGA

672630.2
ELEVATÖR ZİNCİR TAŞIYICI GETİ
(154x78x9mm) - (TANE)

KL-0567

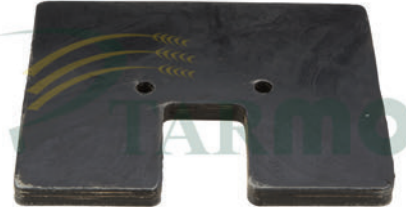
DOM-MEDION-MEGA

605450.1
ELEVATÖR ZİNCİR TAŞIYICI GETİ
(KESMİK)

KL-0568

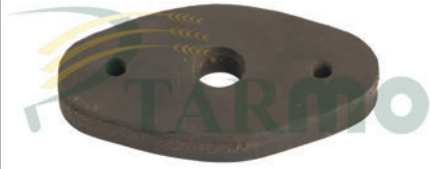
YENİ MODELLERE

642644.2
ELEVATÖR ZİNCİR TAŞIYICI GETİ
(TANE)

KL-0569

LEX

735935.2
ELEVATÖR ZİNCİR TAŞIYICI GETİ
(TANE)

**KL-5690**

BÜTÜN MODELLER

**HELEZON PARMAK GETİ
(16'LİK)**

KL-5691

DOM

**726378.0
BEŞİK ASKI KOLU**

KL-5692

DOM-LEX-MEDION-MEGA

**678637.0
BEŞİK ASKI KOLU**

KL-0570

BÜTÜN MODELLER

**628601.0
BATÖR KASNAK YATAĞI
(YARIKLI) - (BÜYÜK) - (PLASTİK)**

KL-0571

BÜTÜN MODELLER

**617323.0
BATÖR KASNAK YATAĞI
(YARIKLI) - (KÜÇÜK) - (PLASTİK)**

KL-0572

DOM-LEX

**629854.0
BATÖR KASNAK YATAĞI
(YARIKLI) - (PLASTİK)**

KL-0573

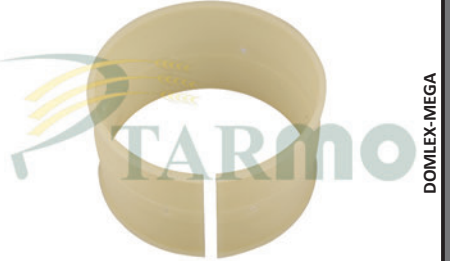
DOM-MEGA-LEX

**629865.0
BATÖR KASNAK YATAĞI
(YARIKLI) - (PLASTİK)**

KL-0574

DOM-LEX-JAG

**629841.0
BATÖR KASNAK YATAĞI
(YARIKLI) - (PLASTİK)**

KL-0575

DOM-LEX-MEGA

**630149.0
BATÖR KASNAK YATAĞI
(YARIKLI) - (PLASTİK)**

KL-0576

DOM-MEGA-LEX

**628602.0
BATÖR KASNAK YATAĞI
(YARIKLI) - (PLASTİK)**

KL-0577

BÜTÜN MODELLER

**603271.0
DOLAP BURCU
(62x58x40mm) - (YARIKLI) - (PLASTİK)**

KL-0578

DOM-MEGA

**670277.0
DOLAP ALT KASNAK BURCU
(DIŞ TARAF) - (PLASTİK)**

**KL-0579**

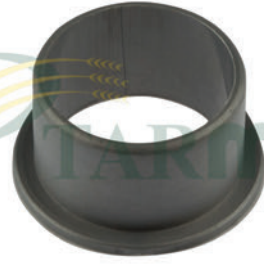
DOM-MEGA

670278.0
DOLAP ALT KASNAK BURCU
(ORTADAKİ) - (PLASTİK)

KL-0580

DOM-MEGA

670279.0
DOLAP ÜST KASNAK BURCU
(ORTADAKİ) - (PLASTİK)

KL-0581

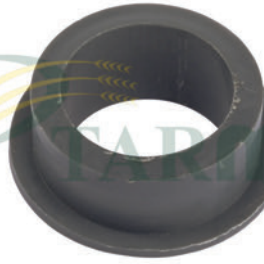
BÜTÜN MODELLER

008550.0
DOLAP TIRMIK BURCU
(PLASTİK)

KL-0582

YENİ MODELLER

626510.0
TIRMIK FİBERİ
(YARIKLI)

KL-0583

BÜTÜN MODELLER

677876.0
TIRMIK FİBERİ
(ŞAPKALI)

KL-0584

LEX

630354.0
GÖTÜRÜCÜ YATAK KELEPÇESİ
(95x110x80mm) - (PLASTİK)

KL-0585

DOM 68-78-88

603612.2
GÖTÜRÜCÜ ZİNCİR YATAĞI
(60x7x730mm) - (PLASTİK)

KL-0586

DOM 68-78-88

650686.0
GÖTÜRÜCÜ ZİNCİR YATAĞI
(60x7x670mm) - (PLASTİK)

KL-0587

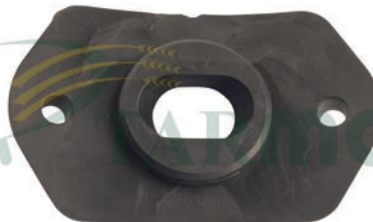
DOM 68-88-118-MED

630570.0
GÖTÜRÜCÜ ZİNCİR YATAĞI
(52x8x444mm) - (PLASTİK)

KL-0588

BÜTÜN MODELLER

603754.2-777199.0
HELEZON PARMAS NAYLONU
(KÜÇÜK)

KL-0589

BÜTÜN MODELLER

603754.2-777199.0
HELEZON PARMAS NAYLONU
(TAKVİYELİ)

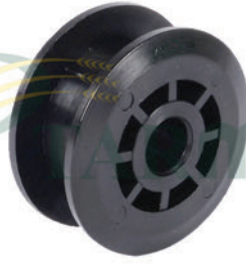
KL-0590

BÜTÜN MODELLER

008543.0
HELEZON PARMAS T-YATAK PLASTİĞİ
(Ø 25mm)

**KL-0591**

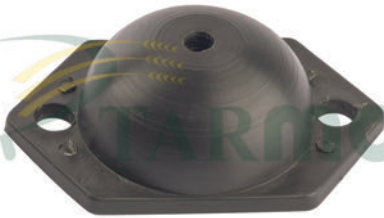
BÜTÜN MODELLER

008553.0**HELEZON PARMAK T-YATAK PLASTİĞİ**
(Ø 30mm)**KL-0592**

BÜTÜN MODELLER

609935.1**ZİNCİR GERİ MAKARASI****KL-0593**

BÜTÜN MODELLER

726981.0**SARSAK RULMAN YATAĞI**
(Ø 80mm) - (PLASTİK)**KL-0594**

DOM 68

603864.0**DOLAP TIRMIK KAPAĞI**
(GRESÖRLÜKLÜ) - (PLASTİK)**KL-0595**

DOM-MEGA-MEDION-JAG

624546.1**MOTORBAŞI MİLİ BURCU****KL-0596**

BÜTÜN MODELLER

660503.0-749996.0**RÜZGARLIK KASNAK FİBERİ**
(U KLİPS) - (28'LİK)**KL-0599**

DOM

653906.0**SARSAK TAPASI**
(PLASTİK)**KL-0600**

BÜTÜN MODELLER

628893.0**DEVİR DÜŞÜRÜCÜ GERİ TAKOZU**
(PLASTİK)**KL-0601**

LEX

519985.1**HELEZON PARMAK FİBERİ****KL-0602**

DOM-MEGA-MEDION

629265.0**RÜZGARLIK KASNAK FİBERİ**
(U KLİPS) - (20'LİK)**KL-0603**

COMMANDER-DOM-JAG

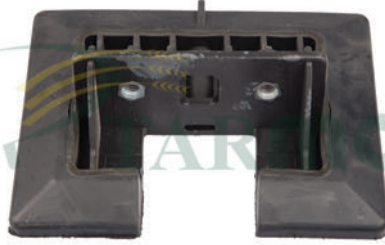
628676.0**BATÖR KASNAK DAMAK FİBERİ****KL-0604**

DOM-JAG-LEX-COM

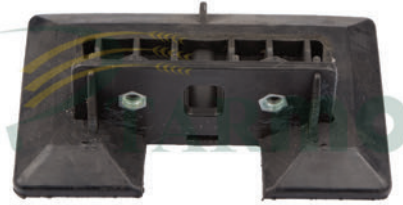
603016.0**BATÖR KASNAK DAMAK FİBERİ**

**KL-0605**

DOM-JAG-LEX-COM

603309.0**BATÖR KASNAK DAMAK FİBERİ****KL-0606**

LEX-MEGA-TUCANO

757219.1**TANE ELEVATÖR ZİNCİR TAŞIYICI GETİ
(SOMUNLU) - (PLASTİK)****KL-0607**

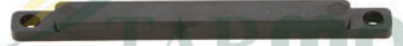
MEDION-MEGA-TUCANO

553462.0**TANE ELEVATÖR ZİNCİR TAŞIYICI GETİ
(SOMUNLU) - (PLASTİK)****KL-0608**

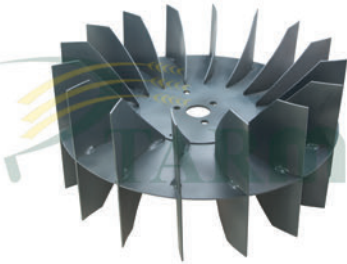
DOM-LEX-JAG-MEGA-MED

630427.0**BOĞAZ ÜST KONTROL KAPAĞI
(PLASTİK)****KL-0609**

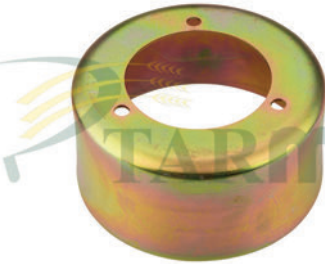
DOM-LEX-MEGA-MED-TUCANO

734784.0**SARSAK RULMAN YATAĞI
(Ø 80mm) - (PLASTİK)****KL-6090**

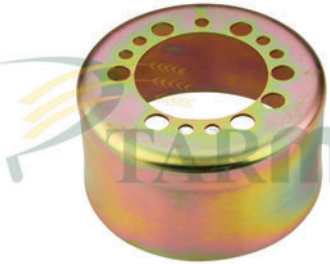
DOM-LEX-MEDION-MEGA

629656.0**KÖRÜK KASNAK KAMASI
(PLASTİK)****KL-0610**

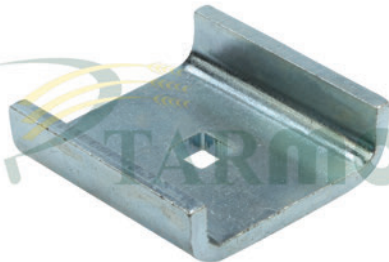
DOM-LEX-MEDION-MEGA

605059.3**RÜZGARLIK FANI
(ROTOR)****KL-0612**

LEX

667412.1**ROTOR KASNAK YAY KAPAĞI
(Ø 120,50mm) x (60,5mm)****KL-0613**

LEX

667531.0**BATÖR KASNAK YAY KAPAĞI
(Ø 122,50mm) x (66mm)****KL-0614**

BÜTÜN MODELLER

617630.0-663157.0**TAMBUR U SACI
(UCU DÖRTKÖŞELİ) - (SULU)****KL-0615**

BÜTÜN MODELLER

617631.0**TAMBUR U SACI
(UCU SİVRİ OLAN)****KL-0616**

LEX

735596.0**TAMBUR U KEPİ
(DÖVME)**

**KL-0617**

LEX

792229.1
TAMBUR EZİCİ YATAK
(YENİ MODEL)

KL-0618

DOM 68-MEDION

683513.1
HİDROLİK POMPA SACI
(6 DELİKLİ)

KL-0619

BÜTÜN MODELLER

673753.1
BIÇAK ÜST BASKI ŞİMİ

KL-0620

DOM-MEGA

672631.1
ELEVATÖR GETİ ÜST DESTEK SACI

KL-0621

DOM-MEGA-MEDION

605449.1
ELEVATÖR GETİ ÜST DESTEK SACI
(TANE) - (BÜYÜK)

KL-0622

DOM-MEGA-MEDION

676770.0
ELEVATÖR GETİ ÜST DESTEK SACI
(TANE) - (KÜÇÜK)

KL-0623

DOM-MEGA-MEDION

636208.2
ELEVATÖR GETİ ÜST DESTEK SACI
(KESMİK)

KL-0624

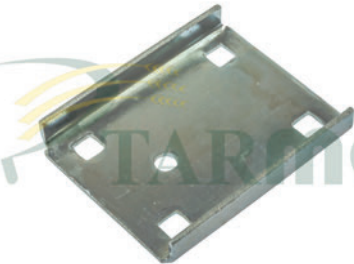
LEX

642658.1
ELEVATÖR GETİ ÜST DESTEK SACI
(TANE)

KL-0625

DOM-LEX-MEDION-MEGA

726980.1
SARSAK RULMAN YATAK SACI

KL-0626

BÜTÜN MODELLER

618139.1
SARSAK TAKOZ SACI

KL-0627

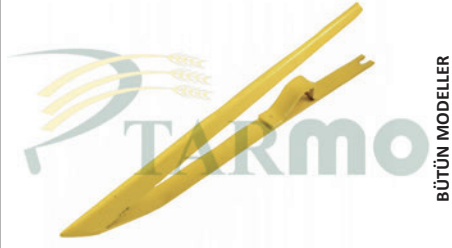
DOM-MEGA-MEDION

670949.2
SARSAK TAKOZ ARA ŞİMİ

KL-0628

BÜTÜN MODELLER

648868.0
SARSAK SAP KARIŞTIRICISI

**KL-0629**

BÜTÜN MODELLER

610272.3-610294.3
SAP KALDIRICI

KL-6290

LEX

626511.0
TIRMİK FİBERİ KORUYUCU SACI

KL-6291

BÜTÜN MODELLER

677883.0
TIRMİK FİBERİ KORUYUCU SACI

KL-6292

BÜTÜN MODELLER

233131.0
TIRMİK FİBER PULU

KL-6295

DOM-MEGA

650900.0
OTOMATİK PİLOT SENSÖR BANTİ
(SAC)

KL-6296

DOM-MEGA

661712.1
SARSAK TAKOZ YATAK SACI
(ALTİGEN)

KL-6297

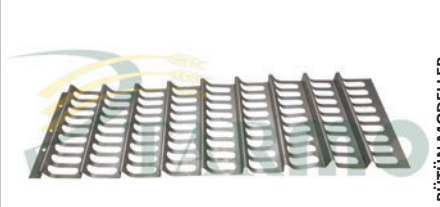
LEX-MEGA-MEDİON

669923.0
BIÇAKKOLU HD ŞANZİMAN ÇATAL
PULU - (TIRNAKLI)

KL-6298

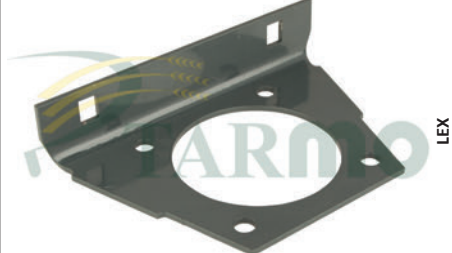
DOM-MEGA-MED-TUCANO

176951.0
SARSAK SACI
(BALIK SIRTİ)

KL-6299

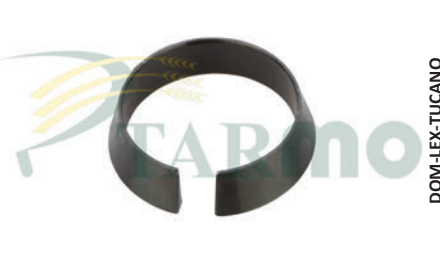
BÜTÜN MODELLER

670936.3-673913.2
SARSAK SACI
(ÜST) - (684996.2)

KL-6300

LEX

792704.0
SARSAK RULMAN YATAK SACI
(3x128x155mm)

KL-6301

DOM-LEX-TUCANO

629047.2
TAMBUR KASNAK SIKTIRMASI
(Ø 45x13mm)

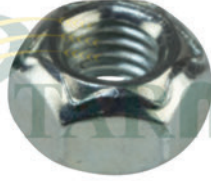
KL-0630

BÜTÜN MODELLER

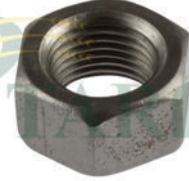
602116.1-239367.0
ÖN TEKER BİJONU
(SOMUNLU)

**KL-0632**

BÜTÜN MODELLER

237561.0**SARSAK TAKOZ CİVATASI****KL-0633**

BÜTÜN MODELLER

237947.0**SARSAK TAKOZ CİVATASI SOMUNU****KL-0634**

BÜTÜN MODELLER

237519.0**HELEZON PARMAK SOMUNU****KL-0635**

LEX

753800.2**BOĞAZ KOL SABİTLEME CİVATASI****KL-0636**

BÜTÜN MODELLER

235534.1**ZIPKA CİVATASI
(M10x50) - (KISA)****KL-0637**

BÜTÜN MODELLER

236462.0**ZIPKA CİVATASI
(M10x60) - (UZUN)****KL-0638**

BÜTÜN MODELLER

236460.0**ZIPKA CİVATASI
(M10x50) - (BAŞ BASKI)****KL-0639**

MEDION 340

626407.0-626408.0**BIÇAK CİVATASI
(M6x17mm) - (ORİJİNAL SOMUNLU)****KL-0640**

MEDION 340

626406.0-626408.0**BIÇAK CİVATASI
(M6x28mm) - (ORİJİNAL SOMUNLU)****KL-0641**

BÜTÜN MODELLER

237663.0**BIÇAK PERÇİNİ
(6x17mm - KISA) - (1 ADET)****KL-0642**

BÜTÜN MODELLER

237054.0**BIÇAK PERÇİNİ
(6x30mm - UZUN) - (1 ADET)****KL-0643**

BÜTÜN MODELLER

237663.0**BIÇAK PERÇİNİ
(6x17mm - KISA) - (1Kg)**

**KL-0644**

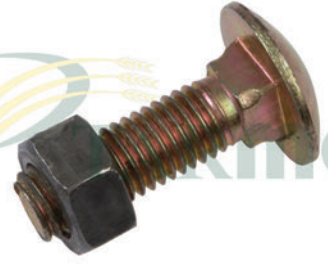
BÜTÜN MODELLER

237054.0
BIÇAK PERÇİNİ
(6x30mm - UZUN) - (1Kg)

KL-0645

BÜTÜN MODELLER

211175.0
ÖN BOĞAZ RULMAN YATAK CİVATASI
(SOMUNLU)

KL-0646

BÜTÜN MODELLER

237461.0
BATÖR LAMA CİVATASI
(M12x30mm)

KL-0647

BÜTÜN MODELLER

238904.0
BIÇAKKOLU ŞANZİMAN KUTU
CİVATASI - (M18x2x45mm)

KL-0648

BÜTÜN MODELLER

502511.0
TAMBUR CİVATASI
(M10x25mm)

KL-0649

DOM

670750.2
BOĞAZ KURT AĞZI SAPLAMASI

KL-0650

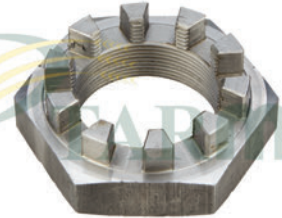
DOM-MEGA-MEDION

649835.0
ARKA DİNGİL PİMİ

KL-0651

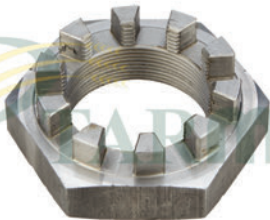
DOM-MEGA

235806.0
ARKA DİNGİL PİM SOMUNU

KL-0652

DOM-LEX-MEDION-MEGA

685364.1
ŞAPKALI AKS SOMUNU

KL-0653

DOM-LEX-MEGA

211053.1
ARKA TEKER AKS SOMUNU

KL-0654

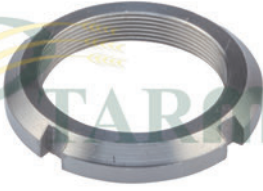
DOM-LEX-MEDION-MEGA

642366.0
BATÖR ŞAPKALI MİL SOMUNU

KL-0655

BÜYÜK TABLA

669922.0
BIÇAKKOLU ŞANZİMAN EKSANTRİK
MİL SOMUNU

**KL-0656**

DOM-MEGA

649943.0**BIÇAKKOLU ŞANZIMANI EKSANTRİK
MİLİ SOMUNU - (KÜÇÜK)****KL-0660**

DOM 68-78-88-98

649266.0**TIRMIK PİSTONU
(SAĞ) - (YENİ MODEL)****KL-0661**

DOM 68-78-88-98-MEGA

649267.0**TIRMIK PİSTONU
(SOL) - (YENİ MODEL)****KL-0662**

DOM 68-76-86-96-106

672550.3**TIRMIK PİSTONU
(SAĞ)****KL-0663**

DOM 48-68-78-88-98-76

672540.4**TIRMIK PİSTONU
(SOL)****KL-0664**

DOM 48-68-78-88-98-JAG

685577.1**DİREKSİYON PİSTONU****KL-0666**

DOM-LEX-MEDION-MEGA

643748.0**TABLA PİSTON MİL YATAĞI****KL-0667**

DOM 88-98-86-96

607035.0**BOŞALTICI PİSTONU****KL-0668**

DOM 68-78-88-98-76

602566.1**TABLA PİSTONU
(KOMPLE)****KL-0669**

DOM-JAG

683261.2**DİREKSİYON PİSTON BAŞLIĞI****KL-0672**

DOM-MEGA-JAG

656860.1**HİDROLİK POMPA****KL-0673**

MEDION

633995.0**HİDROLİK POMPA
(BOSCH REXROTH)**

**KL-6740**

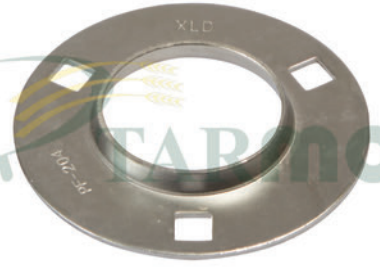
BÜTÜN MODELLER

055619.0
TABLA TÜPÜ
(100 BAR) - (BOSCH REXROTH)

KL-6741

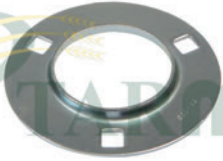
BÜTÜN MODELLER

TABLA TÜPÜ RAKORU

KL-0675

BÜTÜN MODELLER

619288.0
RULMAN SAC KAPAĞI
(YUVARLAK) - (20'LİK) - PF204

KL-0676

BÜTÜN MODELLER

636343.0
RULMAN SAC KAPAĞI
(YUVARLAK) - (25'LİK) - PF205

KL-0677

BÜTÜN MODELLER

610446.0-239321.0
RULMAN SAC KAPAĞI
(YUVARLAK) - (30'LUK) - PF206

KL-0678

BÜTÜN MODELLER

616068.0
RULMAN SAC KAPAĞI
(YUVARLAK) - (35'LİK) - PF207

KL-0679

BÜTÜN MODELLER

560214.0
RULMAN SAC KAPAĞI
(YUVARLAK) - (40'LİK) - PF208

KL-0680

BÜTÜN MODELLER

619285.0
RULMAN SAC KAPAĞI
(20'LİK) - (RULMANLI - INA) - PF204

KL-0681

BÜTÜN MODELLER

636340.0
RULMAN SAC KAPAĞI
(25'LİK) - (RULMANLI - INA) - PF205

KL-0682

BÜTÜN MODELLER

610449.0
RULMAN SAC KAPAĞI
(30'LUK) - (RULMANLI - INA) - PF206

KL-0683

BÜTÜN MODELLER

616065.0
RULMAN SAC KAPAĞI
(35'LİK) - (RULMANLI - INA) - PF207

KL-0684

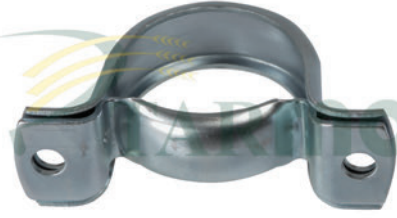
BÜTÜN MODELLER

560210.0
RULMAN SAC KAPAĞI
(40'LİK) - (RULMANLI - INA) - PF208

**KL-0685**

BÜTÜN MODELLER

RULMAN SAC KAPAĞI
(45'LİK) - (RULMANLI - INA) - PF209

KL-0686

BÜTÜN MODELLER

216397.0
ELEVATÖR ASKI SACI
(35'LİK)

KL-0687

BÜTÜN MODELLER

RULMAN SAC KAPAĞI
(45'LİK) - (4 DELİKLİ) - PF209

KL-0690

LEX

775950.0
ARKA AKS BURCU
(70x64x40mm)

KL-0691

JAG-MEDION-LEX

669487.0
ARKA AKS BURCU
(65x60x40mm)

KL-0692

DOM-MEDION-MEGA-JAG

655144.1
ARKA AKS BURCU
(47x45x40mm)

KL-0693

LEX-JAG

637714.0
ARKA DİNGİL BURCU

KL-0694

DOM

819809.3
TABLA HELEZON DİŞLİ BURCU
(125,5x129,5x12mm)

KL-0695

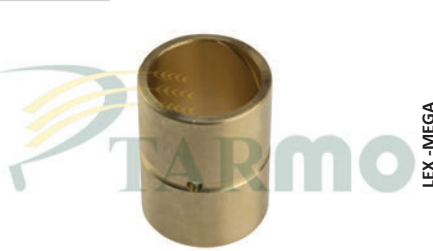
DOM-MED-MEGA-JAG

649431.0
ARKA AKS BURCU
(50x53x40mm)

KL-0696

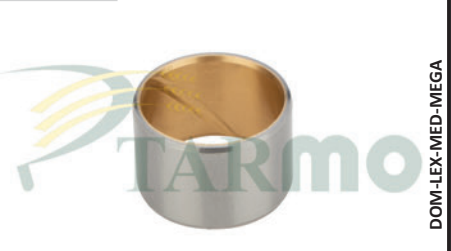
DOM-LEX-MED-MEGA

683371.0
TABLA PİSTON YATAKLAMA BURCU

KL-0697

LEX-MEGA

759642.1
ÇELTİK BALABAN BURCU

KL-0698

DOM-LEX-MED-MEGA

678783.2
TABLA HELEZON BURCU
(35x40x26mm)

**KL-0706**

BÜTÜN MODELLER

008515.0**DİREKSİYON YATAKLAMA BURCU
(PLASTİK)****KL-0707**

BÜTÜN MODELLER

008523.0**TABLA HELEZON YATAK BURCU
(PLASTİK)****KL-0708**

BÜTÜN MODELLER

008560.0**TABLA HELEZON YATAK BURCU
(PLASTİK)****KL-0720**

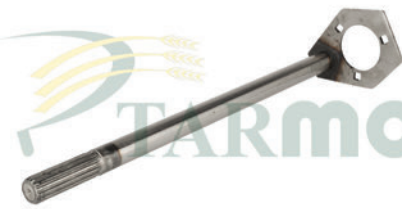
LEX

626057.1**TABLA HELEZON KRANK BAŞ MİLİ
(180mm)****KL-0721**

DOM-MEGA

616200.0**TABLA HELEZON KRANK BAŞ MİLİ
(612mm)****KL-0723**

DOM

**TABLA HELEZON KRANK MİLİ
(Z-16) - (1145mm) - (Ø 30mm)****KL-0724**

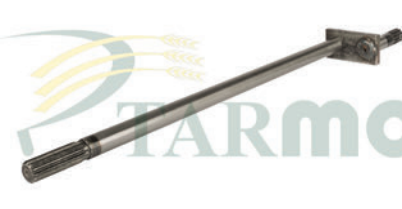
DOM

**TABLA HELEZON KRANK MİLİ
(650mm)-(Ø 30mm)-(SAC KAYNAKLI)****KL-0725**

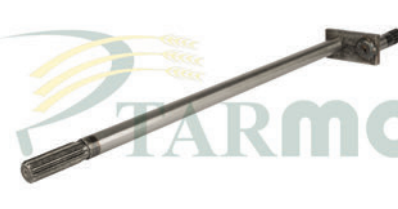
DOM

**TABLA HELEZON KRANK MİLİ -
(555mm) - (Ø 30mm)****KL-0726**

DOM

**645945.1
TABLA HELEZON KRANK MİLİ
(365mm) - (Ø 30mm)****KL-0727**

MEDION

**TABLA HELEZON KRANK MİLİ
(Z-13) - (114,5cm) - (Ø 30mm)****KL-0728**

MEDION

**626710.0
TABLA HELEZON KRANK MİLİ
(720mm) - (Ø 30mm)****KL-0729**

MEDION

**626073.0
TABLA HELEZON KRANK MİLİ
SIKTIRMASI - (Z-13)**

**KL-0730**

DOM-MEGA

645816.1**TABLA HELEZON KRANK MİLİ
SIKTIRMASI - (Z-16)****KL-0731**

DOM

670478.3**TABLA HELEZON KRANK MİLİ
(937mm) - (Ø 25mm)****KL-0732**

DOM

604357.0**TABLA HELEZON KRANK MİLİ
(1010mm) - (Ø 25mm)****KL-0733**

MEGA-MEDION-LEX

753843.1**TABLA HELEZON KRANK BAŞ MİLİ
(ŞAPKALI) - (FREZELİ)****KL-0734**

DOM

626007.1**TABLA HELEZON KRANK BAŞ MİLİ
(ŞAPKALI) - (KAMALI)****KL-0735**

DOM

TABLA HELEZON KRANK MİLİ**KL-0736**

MEDION

**TABLA HELEZON KRANK MİLİ
(560mm) - (FREZELİ)****KL-0737**

DOM

676144.0**TABLA HELEZON KRANK YATAĞI
(KAMASIZ) - (SAĞ)****KL-0738**

DOM

676145.0**TABLA HELEZON KRANK YATAĞI
(KAMALI) - (SOL)****KL-0739**

BÜTÜN MODELLER

626074.3**TABLA HELEZON KRANK MİLİ
(1280mm) - (FREZELİ)****KL-0740**

BÜTÜN MODELLER

626050.1**TABLA HELEZON KRANK MİLİ
(1090mm) - (FREZELİ)****KL-0741**

LEX-TUCANO

519159.0**TABLA HELEZON KRANK MİLİ
(821mm)**

**KL-0742**

DOM-LEX-MEGA

616203.0

TABLA HELEZON KRANK MİLİ

KL-0743

LEX-TUCANO

626672.0TABLA HELEZON KRANK MİLİ
(877mm)**KL-0744**

LEX-TUCANO

626674.0TABLA HELEZON KRANK MİLİ
(930mm)**KL-0755**

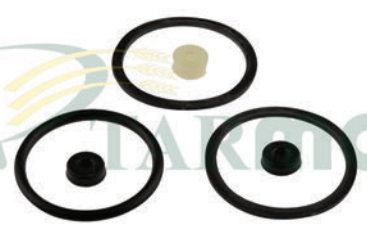
BÜTÜN MODELLER

672584.1-672589.2

ANA MERKEZ TAMİR TAKIMI

KL-0756

BÜTÜN MODELLER

DİREKSİYON BEYNİ TAMİR TAKIMI
(DANFOSS)**KL-0757**

BÜTÜN MODELLER

DİREKSİYON BEYNİ TAMİR TAKIMI

KL-0758

BÜTÜN MODELLER

HİDROLİK PİSTON TAMİR TAKIMI -
(1+1 O-RING)**KL-0759**

BÜTÜN MODELLER

HİDROLİK TAMİR TAKIMI - (BÜYÜK
KEÇELİ)**KL-0768**

BÜTÜN MODELLER

215338.0-218236.0
BIÇAKKOLU ŞANZİMAN ÇATAL KEÇESİ**KL-0769**

BÜTÜN MODELLER

238348.0
BIÇAKKOLU ŞANZİMAN KAPAK
KEÇESİ**KL-0770**

BÜYÜK TABLALAR

213307.0
BIÇAKKOLU ŞANZİMAN ÇATAL KEÇESİ
HD**KL-0771**

BÜYÜK TABLALAR

237891.0
BIÇAKKOLU ŞANZİMAN KAPAK
KEÇESİ - HD

**KL-0772**

DOM-MEGA-MEDION

215372.0**KESMİK ELEVATÖR KİL KEÇESİ****KL-0810**

BÜTÜN MODELLER

007615.0**TABLA HELEZON MİLİ KAMASI
(10x8x50mm) - (BURUNLU)****KL-0811**

BÜTÜN MODELLER

007617.0**TABLA HELEZON MİLİ KAMASI
(10x8x63mm) - (BURUNLU)****KL-0812**

BÜTÜN MODELLER

238458.0**TABLA HELEZON DİŞLİ KAMASI
(10x8x90mm) - (BURUNLU)****KL-0813**

BÜTÜN MODELLER

007614.0**TABLA KASNAK KAMASI
(10x8x45mm) - (BURUNLU)****KL-0814**

BÜTÜN MODELLER

244802.0**TABLA KASNAK KAMASI
(10x8x56mm) - (BURUNLU)****KL-0815**

DOM

007618.0**BOĞAZ KASNAK KAMASI
(10x8x70mm) - (BURUNLU)****KL-0816**

BÜTÜN MODELLER

244810.0**BOĞAZ GÖTÜRÜCÜ DİŞLİ KAMASI
(14x9x63mm)****KL-0817**

BÜTÜN MODELLER

007634.0**AKS MİLİ KAMASI
(14x9x75mm) - (BURUNLU)****KL-0818**

MEGA-LEX

007633.0**BATÖR MİLİ KAMASI
(14x9x56mm) - (BURUNLU)****KL-0819**

BÜTÜN MODELLER

KAMA**(8x7x30mm) - (BURUNLU)****KL-0821**

BÜTÜN MODELLER

007605.0**DOLAP KASNAK KAMASI
(8x7x36mm) - (BURUNLU)**

**KL-0822**

BÜTÜN MODELLER

007612.0
TABLA DİŞLİ KAMASI
(10x8x40mm) - (BURUNLU)

KL-0823

BÜTÜN MODELLER

244806.0
TABLA KASNAK KAMASI
(12x8x45mm) - (BURUNLU)

KL-0824

BÜTÜN MODELLER

630283.1
TABLA KASNAK KAMASI
(12x8x63mm) - (BURUNLU)

KL-0825

DOM

244809.0
BEŞİK KASNAK KAMASI
(12x8x70mm) - (BURUNLU)

KL-0826

LEX

216157.1
BATÖR MİLİ KAMASI
(16x10x70mm) - (BURUNLU)

KL-0827

LEX

216368.0
ELEVATÖR MİLİ KAMASI
(8x7x30mm) - (BURUNLU)

KL-0828

BÜTÜN MODELLER

244799.0
AKS MİLİ KAMASI
(7x8x50mm) - (BURUNLU)

KL-0829

BÜTÜN MODELLER

216279.0
KAMA
(18x11x90mm) - (BURUNLU)

KL-0830

BÜTÜN MODELLER

KAMA
(16x16x85mm) - (BURUNLU)

KL-0831

LEX

215272.1
TAMBUR KASNAK KAMASI
(16x10x80mm) - (BURUNLU)

KL-0832

BÜTÜN MODELLER

244798.0
ELEVATÖR ŞANZIMAN MİLİ KAMASI -
(7x8x45mm) - (BURUNLU)

KL-0833

JAG-LINER

904217.0
KAMA
(7x8x45mm)

**KL-0840**

BÜTÜN MODELLER

629863.0
TABLA KASNAK KAMASI
(12x14x160mm)

KL-0841

BÜTÜN MODELLER

239337.0
TABLA KASNAK KAMASI
(12x8x110mm)

KL-0842

DOM-JAG

629829.0
TABLA KASNAK MİLİ KAMASI
(12x14x208mm)

KL-0843

BÜTÜN MODELLER

670264.0
DOLAP KASNAK MİLİ KAMASI
(9x10x100mm)

KL-0844

BÜTÜN MODELLER

670265.0
DOLAP KASNAK MİLİ KAMASI
(9x10x135mm)

KL-0845

BÜTÜN MODELLER

670975.0
HELEZON YATAK KAMASI
(14x9x50mm)

KL-0846

DOM-MEGA-MEDION

624054.0
MOTORBAŞI MİLİ KAMASI
(13x9x65mm)

KL-0847

DOM-MEGA-MEDION

238212.0
BEŞİK MİLİ KAMASI
(10x8x45mm)

KL-0848

DOM-MEGA

665260.0
ELEVATÖR DİŞLİ KAMASI
(10x8x30mm)

KL-0849

LEX

215538.0
TAMBUR MİLİ KAMASI
(16x10x50mm)

KL-0850

LEX

215815.0
BATÖR KASNAK KAMASI
(16x10x120mm)

KL-0851

LEX

667419.0
BATÖR KASNAK KAMASI
(12x14x221mm)

**KL-0852**

LEX

233099.0
BOĞAZ KASNAK KAMASI
(14x9x56mm)

KL-0853

LEX

239348.0
BOĞAZ KASNAK KAMASI
(8x11x40mm)

KL-0854

BÜTÜN MODELLER

633020.0
BATÖR KASNAK KAMASI
(8x7x30mm)

KL-0855

DOM-MEDION

779054.0
BOĞAZ KASNAK KAMASI
(10x8x100mm)

KL-0856

DOM-MEGA

712420.0
DOLAP KASNAK MİLİ KAMASI
(10x8x110mm)

KL-0857

DOM-MEDION-JAG

238391.0
TAMBUR MİLİ KAMASI
(10x8x65mm)

KL-0858

DOM-MEGA-MEDION

661213.0
TABLA KASNAK POYRA KAMASI
(12x14x150mm)

KL-0859

BÜTÜN MODELLER

105235.0
PATOZ KASNAK KAMASI
(12x8x45mm)

KL-0860

DOM-MEGA-MEDION

244785.0
PATOZ KASNAK KAMASI
(14x9x70mm)

KL-0861

BÜTÜN MODELLER

951003.4
PANJUR MİLİ KAMASI
(6x6x32mm)

KL-0862

DOM-MEGA-MEDION

234900.0
KONİK DİŞLİ KAMASI
(8x7x28mm)

KL-0864

BÜTÜN MODELLER

766546.0
TABLA HELEZON MİLİ KAMASI
(8x7x32mm)

**KL-0865**

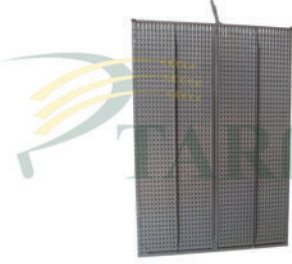
DOM-MEDION-JAG

238210.0
KONİK DİŞLİ KAMASI
(8x7x36mm)

KL-0866

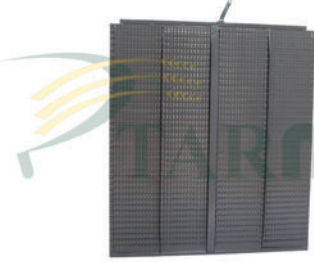
BÜTÜN MODELLER

244784.0
2.BATÖR MİLİ KAMASI
(14x9x40mm)

KL-0875

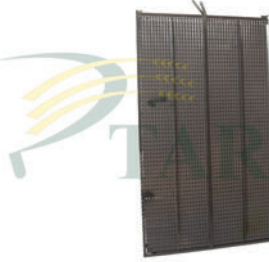
DOM 48-58-68-130-140

725139.1
ÜST ELEK
(1443x1010mm)

KL-0876

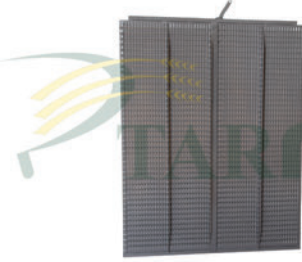
DOM 48-58-68-130-140

725140.1
ALT ELEK
(1130x1010mm)

KL-0877

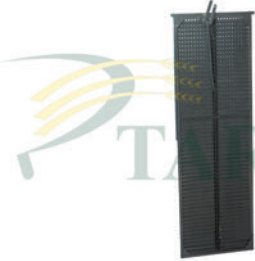
DOM 56-66-76-78-150

600112.1
ÜST ELEK
(1735x1010mm)

KL-0878

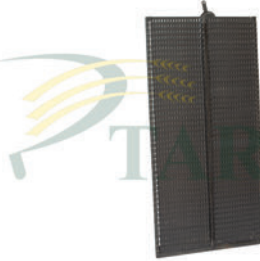
DOM 56-66-76-78-150

600111.4
ALT ELEK
(1275x1010mm)

KL-0880

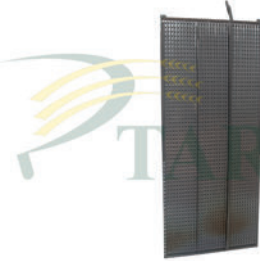
DOM-MEGA-MEDION-COM

647126.1
ÜST ELEK
(1755x560mm)

KL-0882

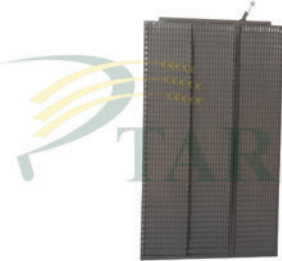
DOM-MEGA-MEDION-COM

646098.2-600114.1
ALT ELEK
(1275x632mm)

KL-0883

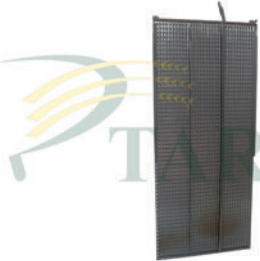
DOM-MEGA-MEDION-COM

600118.1
ÜST ELEK
(1739x760mm)

KL-0884

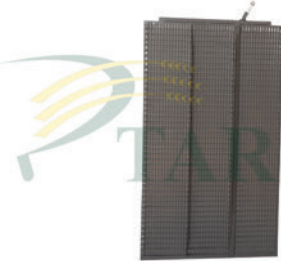
DOM-MEGA-MEDION-COM

600117.4
ALT ELEK
(1275x760mm)

KL-0885

DOM-MEGA-MEDION-COM

647127.1
ÜST ELEK
(1755x690mm)

KL-0886

DOM-MEGA-MEDION-COM

600117.4
ALT ELEK
(1275x760mm)

**KL-0887**

DOM-MEGA-MEDION-COM

647674.1
ÜST ELEK
(1739x561mm)

KL-0888

TUCANO

553541.1-552583.0
ÜST ELEK
(1739x685mm)

KL-0889

TUCANO

553540.0-554901.0
ALT ELEK
(1275x630mm)

KL-0892

LEX

736060.2
ÜST ELEK
(1739x752mm)

KL-0893

LEX

736061.2
ALT ELEK
(1275x820mm)

KL-1032

DOM-LEX

147225.0
YAĞ FİLTRESİ

KL-1033

DOM-MEGA-LEX-MEDION

602390.0
MAZOT FİLTRESİ

KL-1034

DOM-MEGA-JAG

824836.0
HİDROLİK FİLTRESİ

KL-1035

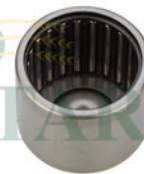
BÜTÜN MODELLER

766538.0
HİDROLİK FİLTRESİ

KL-1050

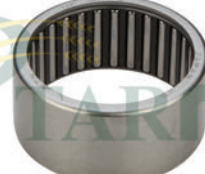
BÜTÜN MODELLER

215381.0-215382.0
BIÇAKKOLU ŞANZIMAN İÇ YATAK
RULMANI

KL-1051

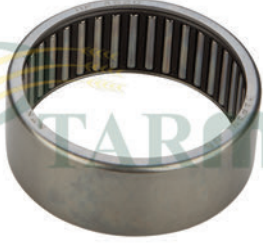
BÜTÜN MODELLER

234491.0
BIÇAKKOLU ŞANZIMAN DİP
RULMANI

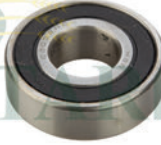
KL-1052

BÜTÜN MODELLER

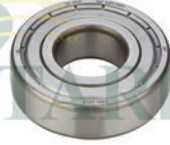
238624.0
BIÇAKKOLU ŞANZIMAN ÜST KASNAK
RULMANI

**KL-1053**

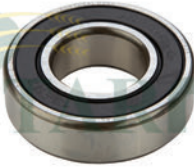
BÜTÜN MODELLER

215337.0**BIÇAKKOLU ŞANZIMAN ÇATAL SAP
RULMANI****KL-1057**

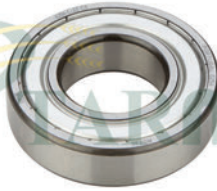
BÜTÜN MODELLER

239463.0**RULMAN
6203 2RS****KL-1058**

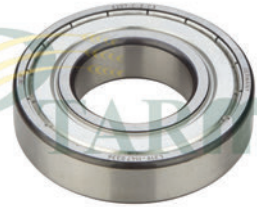
BÜTÜN MODELLER

236752.0**RULMAN
6204 2RS****KL-1059**

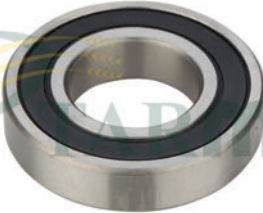
BÜTÜN MODELLER

215517.0**RULMAN
6205 2RS****KL-1060**

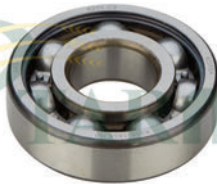
BÜTÜN MODELLER

235830.0**RULMAN
6206 2RS****KL-1061**

BÜTÜN MODELLER

244267.0**RULMAN
6207 2RS****KL-1062**

BÜTÜN MODELLER

237833.0**RULMAN
6208 K2RS C3****KL-1064**

BÜTÜN MODELLER

215536.0**RULMAN
6305 2RS****KL-1080**

BÜTÜN MODELLER

238640.0**RULMAN
32011****KL-1081**

BÜTÜN MODELLER

212210.0**RULMAN
32012****KL-1082**

BÜTÜN MODELLER

213304.0**RULMAN
BA 3416**