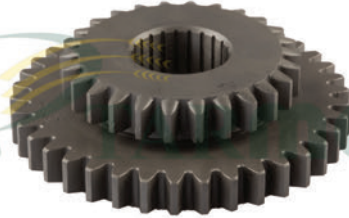


**KL-0001**

DOM 68-78-88

677488.0
1st GEAR - (Z-48)

KL-0002

DOM-JAG-MEGA

609402.0
DOUBLE GEAR WHEEL - (Z-26 / 38)

KL-0003

MEDION-MEGA

637724.0
DOUBLE SLIDING GEAR - (Z-23 / 35)

KL-0004

DOM-LEX-MEGA-TUCANO

669746.1
DOUBLE SLIDING GEAR
(Z-21 / 33)

KL-0005

DOM 78-88-98-MEGA 202

063158.0
DOUBLE SLIDING GEAR
(Z-21 / 33)

KL-0006

DOM-JAG

685641.0
DOUBLE SLIDING GEAR
(Z-24 / 34)

KL-0007

DOM 68-78-130-JAG 800

643570.0
MAIN SHAFT
(Z-11) - (LONG)

KL-0008

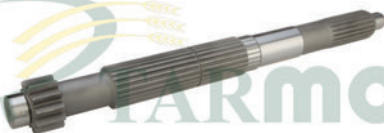
DOM-JAG-MEGA

643466.0
MAIN SHAFT

KL-0010

DOM 68

649971.0
DRIVE SHAFT
(532,5mm)

KL-0011

DOM-JAG

649967.0
DRIVE SHAFT

KL-0012

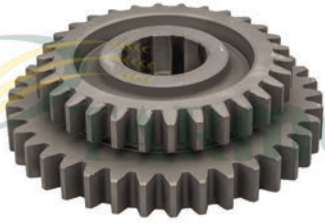
MEDION-MEGA-LEX

669549.0
DRIVE SHAFT

KL-0013

DOM 78-88-98-108-MEGA

649972.0
DRIVE SHAFT
(Z-15) - (355mm) - (UPPER)

**KL-0014**

DOM 68-75-88

677491.0
SLIDING WHEEL
(Z-30 / 37)

KL-0015

DOM-LEX-MEGA-TUCANO

669748.0
SLIDING WHEEL
(Z-20 / 44)

KL-0016

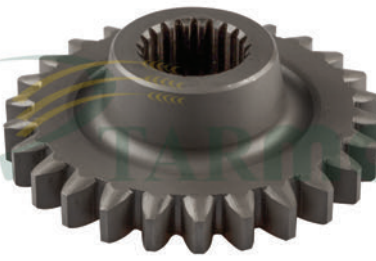
JAG

980336.1
DOUBLE GEAR
(Z-22 / 25)

KL-0017

JAG

980333.2
TOOTH WHEEL
(Z-24)

KL-0018

JAG

980334.2
TOOTH WHEEL
(Z-26)

KL-0019

DOM 68-76-130-140-150

635033.2
REVERSE IDLER
(Z-16)

KL-0021

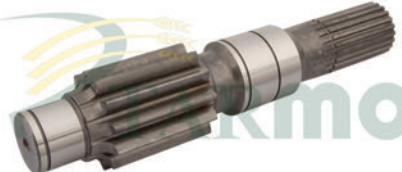
DOM 88-98-MEDION-LEX

679243.0
GEAR
(Z-98 / 36)

KL-0022

DOM-JAG-MEGA

606946.1
PINION SHAFT
(Z-12)

KL-0023

DOM 76-86-96

679242.0
PINION SHAFT
(Z-12 / 22)

KL-0024

DOM

674753.1
PINION

KL-0025

LEX 460-440

669331.1
SPUR GEAR
(Z-27)

KL-0026

DOM 78-88-98

657356.0
DRIVEN SHAFT

**KL-0027**

MEDION-MEGA

545621.0
DRIVEN SHAFT**KL-0028**

DOM 48-68

723511.0
DRIVEN SHAFT**KL-0029**

JAG

070251.5
DRIVEN SHAFT**KL-0030**

DOM-JAG

609404.0
SLIDING GEAR
(Z-33 / 21)**KL-0031**

DOM 108-LEX-MEGA-TUCANO

669747.1
DOUBLE GEAR WHEEL**KL-0032**

TUCANO

775726.0
DRIVE SHAFT**KL-0033**

LEX

260687.0
MAIN SHAFT**KL-0034**

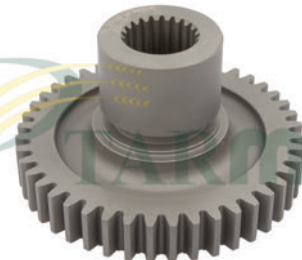
DOM 108-MEDION 310-340

637829.0
MAIN SHAFT
(WITH KEY)**KL-0035**

DOM-JAG

631634.2
REVERSE IDLER
(Z-17)**KL-0036**

DOM-MEDION-LEX

669818.1
PINION**KL-0037**

TUCANO

775735.0
SLIDING GEAR
(Z-44)**KL-0038**

MEGA-MEDION

FIRST AND REVERSE GEAR
(Z-24 / 36)

**KL-0039**

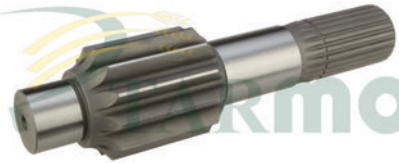
LEX

669434.1
SPUR GEAR
(Ø 293,8mm) - (110mm)

KL-0041

DOM-JAG

685526.0
TOOTH WHEEL
(Z-78)

KL-0042

DOM 106-118-MEDION-MEGA

602109.0
PINION SHAFT

KL-0043

LEX

669437.2
INTERMED SHAFT
(Z-13)

KL-0044

LEX-MEDION-MEGA

669439.1
PINION SHAFT
(Z-12 / 21)

KL-0045

LEX

769786.0
MAIN SHAFT
(Z-21) - (444,50mm)

KL-0046

LEX

769784.0
DRIVE SHAFT
(Z-23 / 15 / 24) - (363,10mm)

KL-0054

TUCANO

549048.0
SHAFT
(Ø 70x426,1mm)

KL-0055

TUCANO

545039.1
SHAFT
(Ø 70x453mm)

KL-2061

LEX 440-460

669327.0
SPUR GEAR
(Z-33 / 28)

KL-2062

LEX

637505.0
INTERM. GEAR WHEEL
(Z-60)

KL-2063

LEX

669328.0
INTERM. GEAR WHEEL
(Z-43)

**KL-2064**

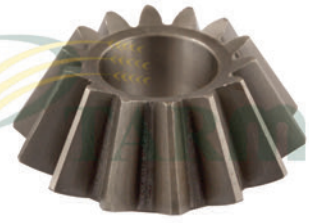
LEX

637503.0
SPUR GEAR
(Z-52)

KL-2065

LEX

637507.0
SPUR GEAR
(Z-43)

KL-2067

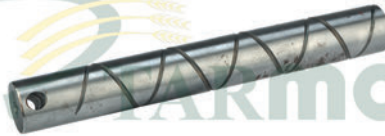
ALL MODELS

635881.0
BEVEL GEAR

KL-2068

ALL MODELS

677489.1
WHEEL PLATE

KL-2069

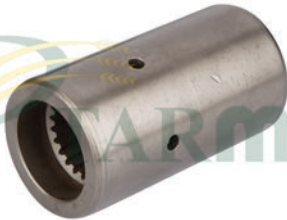
ALL MODELS

631630.2
DIFFERENTIAL SHAFT

KL-2140

LEX

669548.0
PROFILE BUSHING

KL-2141

DOM76-78-88-98

685162.1
PROFILE BUSHING

KL-2143

DRIVE SHAFT
LONG - SAUER

KL-2144

DRIVE SHAFT
SHORT - SAUER

KL-2146

DRIVE SHAFT
SHORT - LINDE

KL-2149

TUCANO

564196.0
CABLE

KL-2154

DOM-MEGA-MED-TUCANO

628691.0
STEP PLANET
(Z-29 / 17)

**KL-2155**

DOM-MEGA-MED-TUCANO

628692.2
SUN GEAR**KL-2156**

DOM-MEGA-MED-TUCANO

628693.0
SUN GEAR
(Z-27)**KL-2159**

LEX

694826.0-694828.0
BEVEL GEAR AND BEVEL SHAFT
(SET)**KL-2161**

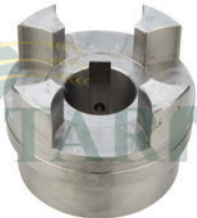
LEX

694831.0
DRIVE SHAFT
(ROTOR GEAR) - LH**KL-2162**

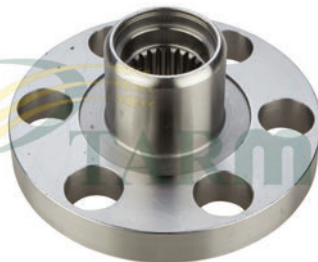
LEX

694827.0-694825.0
BEVEL GEAR AND BEVEL SHAFT
(GEARBOX) - RH**KL-2163**

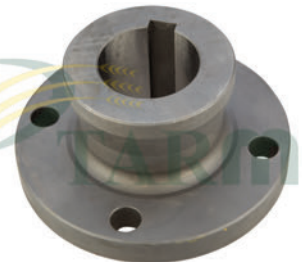
LEX

694825.0
BEVEL GEAR
(GEARBOX) - RH**KL-2165**

LEX

771337.1
TOOTHED RIM**KL-2166**

LEX

736602.1
PROFILE HUB
(Ø 200mm) x (85mm)**KL-2167**

LEX

627809.0
HUB**KL-2168**

LEX

644975.0-744832.0
FLANGE SHAFT**KL-0061A**

ALL MODELS

643686.1
WOBBLE BOX**KL-0061**

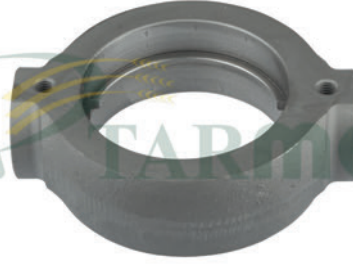
ALL MODELS

643686.1
WOBBLE BOX
(COMPLETE WITH ARM & PULLEY)

**KL-0062**

ALL MODELS

643682.0
SWING FORKE

KL-0063

ALL MODELS

643683.0
WOBBLE HOUSING

KL-0064

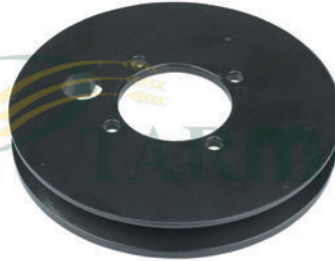
ALL MODELS

648116.2
SWING LEVER

KL-0065

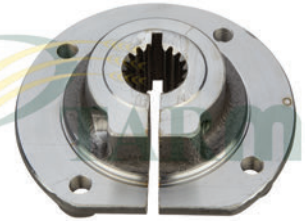
ALL MODELS

643685.1-649945.0
ECCENTRIC SHAFT
(SPLINED)

KL-0066

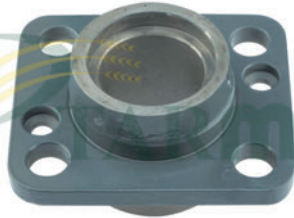
ALL MODELS

670402.0
PULLEY

KL-0067

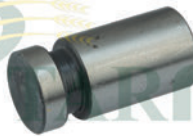
ALL MODELS

670401.1
HUB
(FORGED)

KL-0068

ALL MODELS

643659.0
BEARING HOUSING

KL-0069

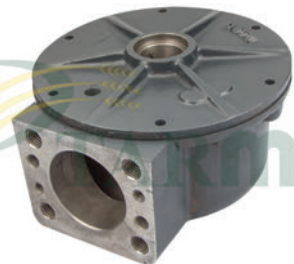
ALL MODELS

643404.0
BEARING PIN

KL-0070

ALL MODELS

643628.0
BEARING BUSH

KL-0071

ALL MODELS

643660.1
GEARBOX HOUSING WITH COVER

KL-0072

ALL MODELS

649990.0
SLOTTED NUT

KL-0073

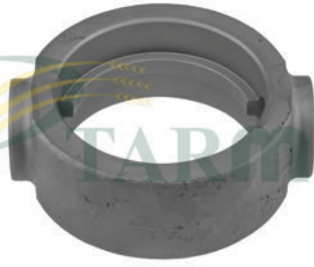
ALL MODELS

637998.0-643403.1
SWING FORKE

**KL-0074**

DOM-MEGA

649989.0
ECCENTRIC SHAFT

KL-0075

DOM-MEGA

637999.1-643402.0
WOBBLE HOUSING

KL-0076

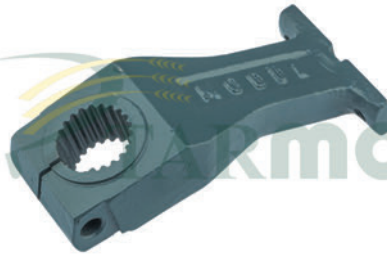
DOM-LEX-MEGA

637991.0
BEARING PIN

KL-0077

LEX-MEGA

637779.0
BEARING BUSH

KL-0078

DOM-LEX-MEGA

670392.3
SWING LEVER

KL-0079

DOM-LEX-MEGA

670395.2
FLANGE

KL-0080A

DOM-LEX-MEGA

643656.1
WOBBLE BOX

KL-0080

DOM-LEX-MEGA

643656.1
WOBBLE BOX
(COMPLETE WITH ARM & PULLEY)

KL-0081A

LARGE PLATFORM

637534.1
WOBBLE BOX
(HD DESIGN)

KL-0081

LARGE PLATFORM

637534.1
WOBBLE BOX
(HD DESIGN) - (COMPLETE)

KL-0082

LARGE PLATFORM

669915.1
SWING FORKE

KL-0083

LARGE PLATFORM

669914.1
WOBBLE HOUSING

**KL-0084**

LARGE PLATFORM

626931.0
SWING LEVER**KL-0085**

LARGE PLATFORM

669913.1
WOBBLE SHAFT**KL-0086**

LARGE PLATFORM

626619.0
V-BELT PULLEY**KL-0087**

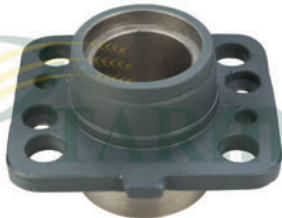
LARGE PLATFORM

669925.1
HUB
(FORGED)**KL-0088**

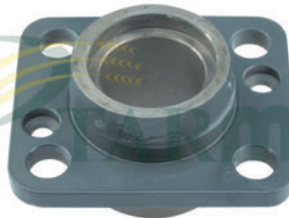
LARGE PLATFORM

669916.0
BEARING PIN**KL-0089**

LARGE PLATFORM

669917.0
BEARING BUSH**KL-0090**

LARGE PLATFORM

669921.1
BEARING HOUSING**KL-2075**

LARGE PLATFORM

643659.0-643659.1
BEARING HOUSING**KL-2077**

ALL MODELS

649944.0
BACKUP WASHER**KL-2078**

ALL MODELS

WASHER**KL-0091**

DOM 68-78-76-130-JAG 682

643531.0
WHEEL SHAFT
(Z-36) - (FORGED)**KL-0093**

DOM-LEX-MEDION-MEGA

694208.1
AXLE SPINDLE
RH

**KL-0094**

DOM-LEX-MEDION-MEGA

694207.1
AXLE SPINDLE
LH

KL-0095

LEX

669424.1
AXLE SPINDLE
(LH - RH)

KL-0096

DOM-MEGA-MEDION-JAG

673412.0
AXLE SPINDLE
RH

KL-0097

DOM-MEGA-MEDION-JAG

673417.0-685698.1
AXLE SPINDLE
LH

KL-0098

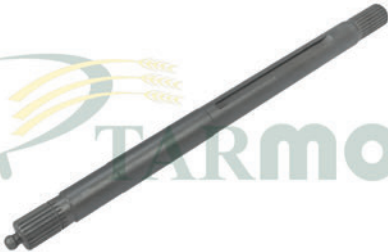
DOM-MEGA

602009.1
COUNTERSHAFT
(907mm) - RH

KL-0099

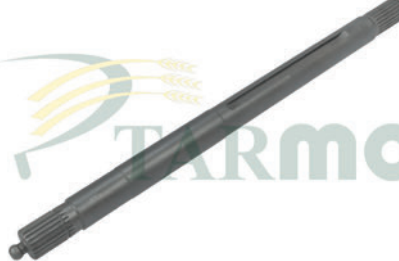
DOM-MEGA

602007.1
COUNTERSHAFT
(974mm) - LH

KL-0100

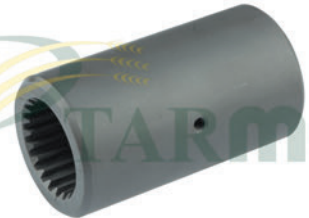
DOM

606872.1-609436.1
COUNTERSHAFT
(Ø 50mm) - (789mm) - LH

KL-0101

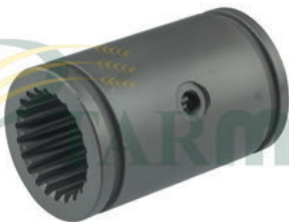
DOM-MEGA-MEDION

643016.1
COUNTERSHAFT
(943mm) - RH

KL-0102

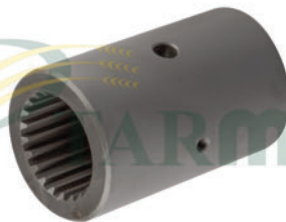
DOM-JAG-MEGA

649934.0
PROFILE BUSHING
(Z-22)

KL-0103

DOM-JAG-MEDION 340

679550.2
PROFILE BUSHING
(Z-21)

KL-0104

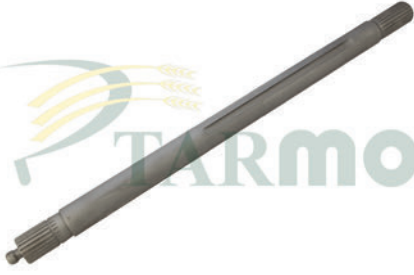
LEX-TUCANO

769621.0
PROFILE BUSHING
(Z-21)

KL-0105

MEDION 310-320

637837.0
COUNTERSHAFT
(837mm)

**KL-0106**

DOM 106-108-118

602148.3
COUNTERSHAFT
(841mm)

KL-0110

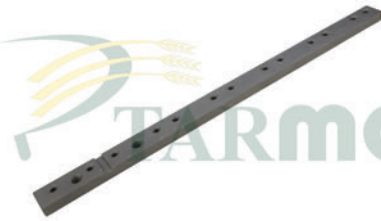
DOM

KNIFE BACK
(FOR 57,5 KNIFES)

KL-0111

DOM 68

611213.0
KNIFE BACK
(FOR 65 KNIFES)

KL-0112

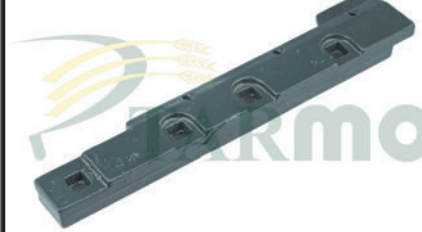
ALL MODELS

626755.0
CONNECTION-STEEL

KL-0113

DOM 68-108-118-MEGA

676231.0
CONNECTION-STEEL

KL-0114

DOM

611220.1
KNIFE GUIDE

KL-0115

DOM 68-76

603872.0
KNIFE HEAD

KL-0116

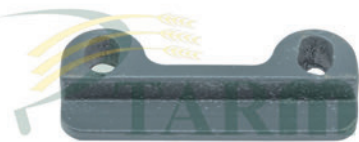
DOM 68

676236.0
KNIFE THUMB
(FOR RIVETS)

KL-0117

YENI MODELLERE

626749.1
KNIFE THUMB
(FOR BOLTS)

KL-0118

DOM-MEGA

626748.0
KNIFE THUMB

KL-0119

DOM-MEGA

613017.2
KNIFE THUMB

KL-0121

ALL MODELS

670120.1-100144.0
KNIFE HEAD



KL-0122



TUCANO-LEX

626411.0
KNIFE HEAD
(LONG) - (BOLT TYPE)

KL-0123



LEX

688030.0
KNIFE HEAD

KL-0124



ALL MODELS

670098.0
BALL JOINT

KL-0125



ALL MODELS

643046.0
BALL JOINT
(FEMALE THREADED)

KL-0126



DOM 68-78-88

656113.1-177091.0
BALL JOINT
(MALE THREADED)

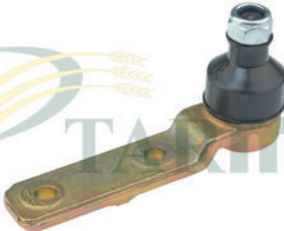
KL-0127



DOM-JAG

570591.5
BALL JOINT
(FEMALE THREADED)

KL-0128



ALL MODELS

670120.1-100144.0
KNIFE HEAD

KL-2085



LEX-JAG

668997.0
BALL JOINT

KL-2086



LEX-JAG

668998.0
BALL JOINT

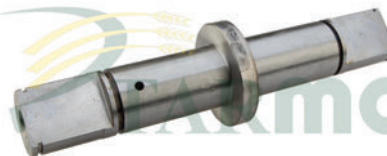
KL-2094



ALL MODELS

TRACK ROLLER - (D4)
(COMPLETE)

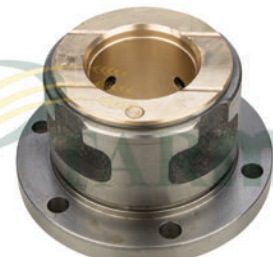
KL-2095



ALL MODELS

ROLLER SHAFT

KL-2096

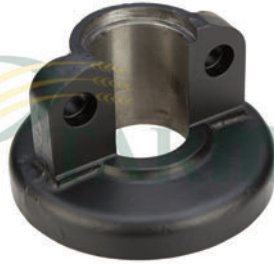


ALL MODELS

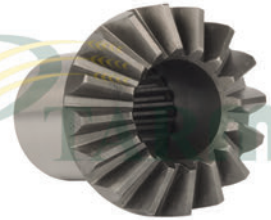
HUB

**KL-2097**

ALL MODELS

BUSHING**KL-2098**

ALL MODELS

SUPPORT**KL-0130**

DOM

**608528.0
ELEVATOR GEAR
(Z-16)****KL-0131**

MEDION-MEGA

**683056.0
TOOTH WHEEL****KL-0132**

LEX

**668822.0
TOOTH WHEEL****KL-0133**

LEX

**668823.0
TOOTH WHEEL****KL-0134**

DOM-MEDION-MEGA-LEX

**639593.0
ELEVATOR GEARBOX****KL-0135**

DOM-MEDION-MEGA-LEX

**605164.3
ELEVATOR GEARBOX****KL-0136**

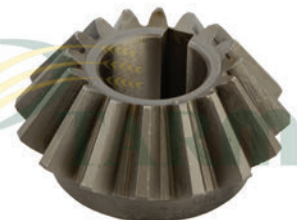
DOM 88-98-108

**603839.1
ELEVATOR GEARBOX****KL-0137**

DOM 88-98-108

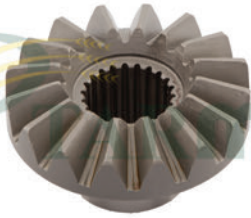
**608931.3
ELEVATOR GEARBOX****KL-0138**

DOM-MEDION-LEX

**605587.1
BEVEL GEAR
(Z-23)****KL-0139**

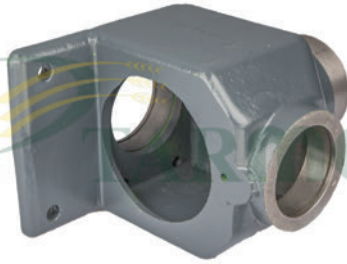
DOM-MEDION-LEX

**605588.1
BEVEL GEAR
(Z-16)**

**KL-0140**

MEGA 208-218

639590.0
BEVEL GEAR
(Z-16) - (SPLINED)

KL-0141

DOM 88-98-108

603839.1
ELEVATOR GEARBOX
(EMPTY)

KL-0142

DOM 88-98-108

608931.3
ELEVATOR GEARBOX
(EMPTY)

KL-0143

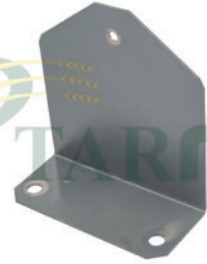
DOM 88-98-108

608527.1
SHAFT

KL-0144

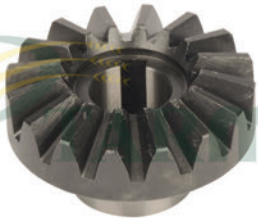
DOM 88-98-108

608523.0
SHAFT

KL-0145

DOM 88-98-108

608541.1
GEARBOX COVER

KL-0146

DOM-MEGA-MEDION

605791.1
BEVEL GEAR
(Z-16)

KL-0147

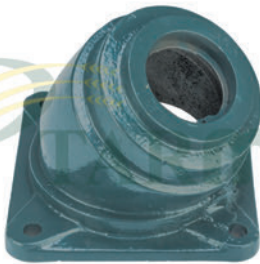
DOM-MEGA-MEDION

605729.0
SHAFT

KL-0148

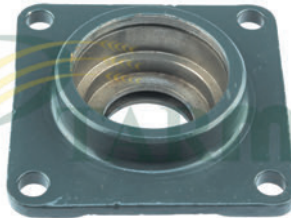
MEGA 208-218

639591.1
TOOTH SHAFT
(SPLINED)

KL-0149

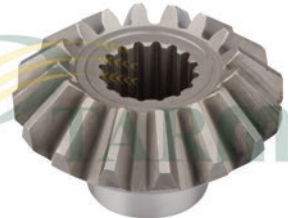
DOM-MEGA-MEDION

605164.3
HOUSING

KL-0150

DOM-LEX-MEDION-MEGA

647510.1
FLANGE

KL-1500

LEX

755203.1
BEVEL GEAR
(Z-16)

**KL-1501**

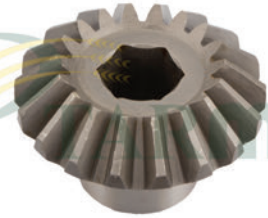
LEX

618946.3
BEVEL GEAR
(Z-16)

KL-1503

DOM-MEGA

603837.0
TOOTH SHAFT
(SPLINED)

KL-1504

JAG

911838.0
BEVEL GEAR
(Z-18)

KL-1505

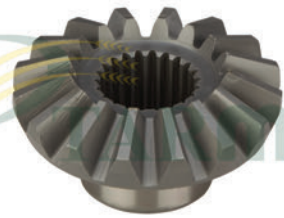
JAG

910314.1
BEVEL GEAR
(Z-18)

KL-1506

LEX-TUCANO

735887.0
HOUSING
(COMPLETE)

KL-1507

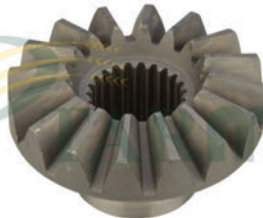
LEX-TUCANO

735888.0
BEVEL GEAR
(Z-16)

KL-1508

LEX-TUCANO

735898.0
SHAFT
(Z-16)

KL-1509

TUCANO

555542.0
BEVEL GEAR
(Z-16)

KL-1510

LEX

755202.1
SHAFT

KL-1511

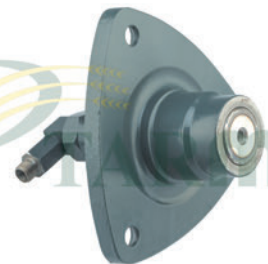
LEX-TUCANO

507015.0
BEVEL GEAR
(Z-16)

KL-1512

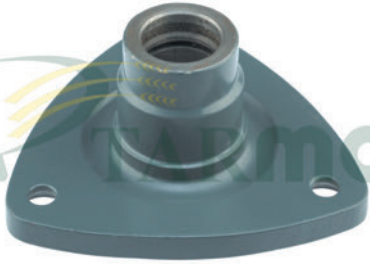
JAG

911834.0-912551.0
COUPLER
(Z-24)

KL-0151

DOM-MEGA-JAG

602560.2
OIL INTAKE
(COMPLETE)

**KL-0152**

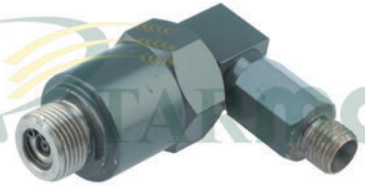
DOM-MEGA-JAG

629690.0
PRESSURE FLANGE

KL-0153

ALL MODELS

655417.0
HYDRAULIC PISTON

KL-0154

DOM-MEGA-JAG

602561.2
CONTROL CYLINDER

KL-0155

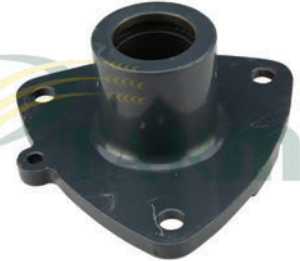
DOM-MEGA-JAG

630203.0
TRUNNION

KL-0156

MEGA-MEDION-LEX

089810.0
ROTARY CONNECTION

KL-0157

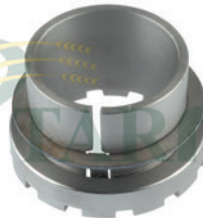
MEGA-LEX

089615.0
PRESSURE FLANGE

KL-0159

MEGA-MEDION

215493.0-642366.1
TAPER LOCK SLEEVE
(SET)

KL-0160

ALL MODELS

610359.1-235882.0
TAPER LOCK SLEEVE
(SET)

KL-0161

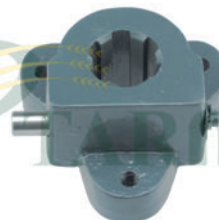
ALL MODELS

726982.0-752212.1
TAPER LOCK SLEEVE

KL-0162

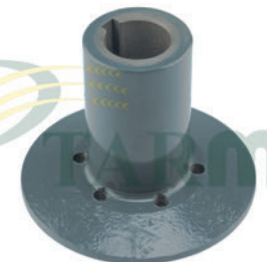
LEX

213055.0-669639.0
SLOTTED NUT

KL-0163

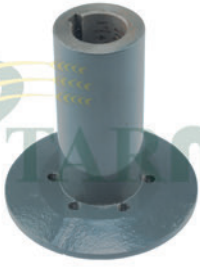
DOM-MAISPPL

608007.0
SPLINED COUPLING

KL-0164

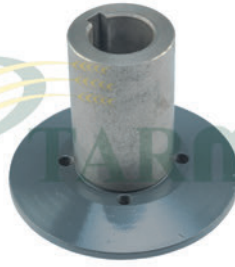
DOM-MEDION-MEGA

644327.0
CLUTCH HUB
(SPHERO)

**KL-0165**

DOM

644318.0
CLUTCH HUB
(SPHERO)

KL-0166

DOM-COM

670584.0
CLUTCH HUB
(SPHERO)

KL-0167

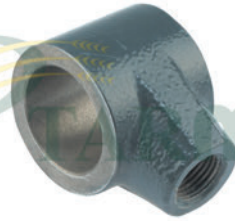
LEX-TUCANO

667303.2
CLUTCH HUB
(SPHERO)

KL-0169

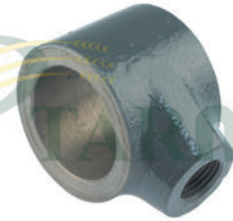
DOM

670466.1
BEARING PIECE

KL-0170

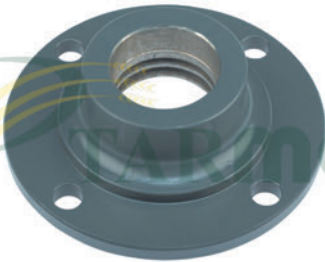
DOM-LEX-MEGA

645830.1
FINGER HOUSING
(ø 30mm) - (SPHERO)

KL-0171

ALL MODELS

670199.0
SWING BEARING
(ø 25mm) - (SPHERO)

KL-0172

MEGA-LEX

628736.0
BEARING SHELL

KL-0173

DOM-MEGA-MEDION

061055.1
BEARING SHELL

KL-0174

DOM-MEGA-MEDION

061410.1
BEARING SHELL

KL-0175

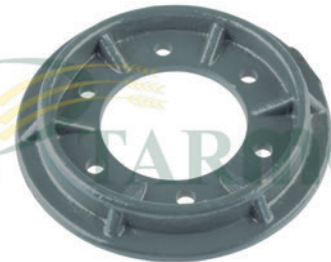
DOM-JAG-LEX

671082.0
HYDRAULIC PISTON

KL-0176

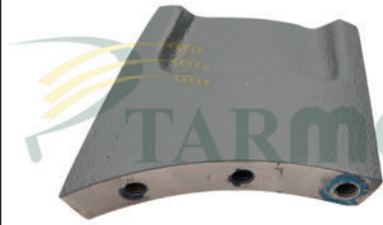
MEGA-MEDION

753841.0
HUB
(SPLINED)

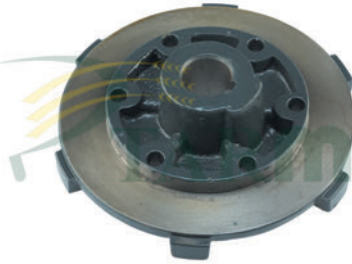
KL-0177

ALL MODELS

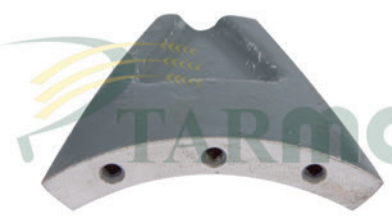
645933.0
COVER

**KL-0178**

TUCANO 320-330

603022.1
CAM SECTION**KL-0179**

LEX

645931.2
HUB**KL-0180**

TUCANO

667532.0
CAM SECTION**KL-0181**

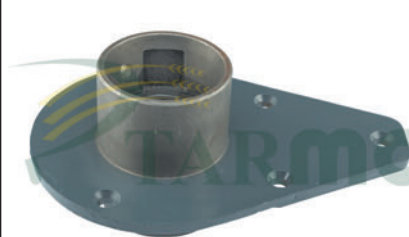
ALL MODELS

662624.2
BEARING UNIT**KL-0182**

ALL MODELS

603144.0
BEARING UNIT**KL-0183**

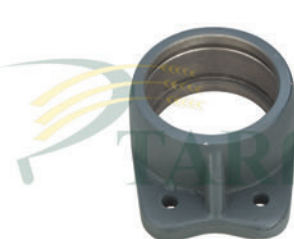
DOM-MEDION-MEGA

645007.0
BEARING HOUSING**KL-0184**

DOM

603502.0
BEARING HOUSING**KL-0185**

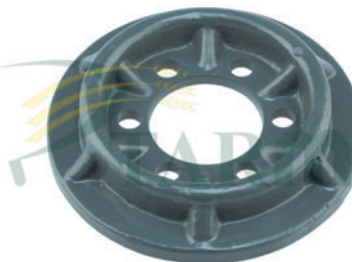
LEX

630350.2
BEARING UNIT**KL-0186**

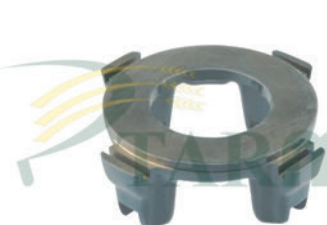
LEX

630357.1
BEARING UNIT**KL-0187**

DOM 68-78-88-98

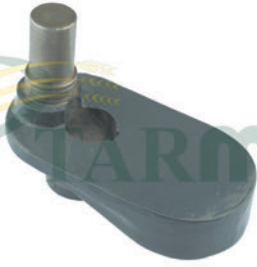
670126.2
CLUTCH HUB**KL-0188**

ALL MODELS

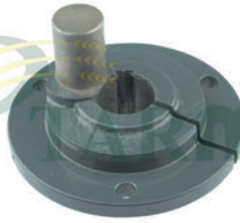
670128.0
COVER**KL-0189**

DOM

CLUTCH HOUSING

**KL-0190**

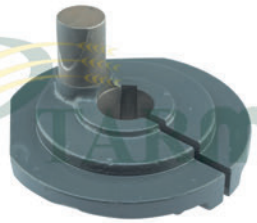
DOM 68-86-96-106

676289.0
CRANK**KL-0191**

DOM-MEDION-MEGA

600790.1
ECCENTRIC HUB
RH**KL-0192**

DOM-MEDION-MEGA

600791.1
ECCENTRIC HUB
LH**KL-0193**

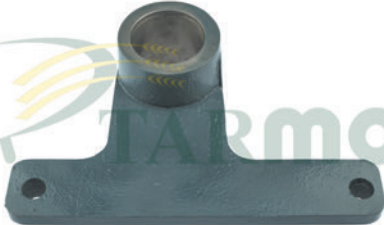
LEX

751859.1
ECCENTRIC HUB
RH**KL-0194**

DOM 38-48-58-68-130

725012.0
ECCENTRIC HUB
LH**KL-0195**

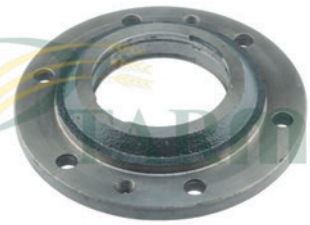
DOM 38-48-58-68-130

725013.0
ECCENTRIC HUB
RH**KL-0196**

DOM 68-76-86-96-106

673347.0
ANGLE LEVER**KL-0197**

MEDION

544116.0
BEARING SHELL
RIGHT**KL-0198**

MEDION

544149.0
BEARING SHELL
LEFT**KL-0199**

DOM 68-78-88-98-JAG

687349.0
BEARING HOUSING
RH**KL-0200**

DOM 78-88-98-106

687301.1
BEARING HOUSING
LH**KL-0201**

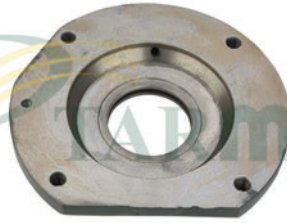
DOM 68-88-MEGA-MEDION

687307.0
BEARING HOUSING

**KL-0202**

DOM 78-88-98

629485.0
BEARING HOUSING
LH

KL-0203

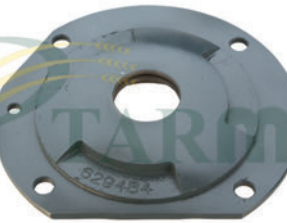
DOM 88-108-MEGA-MEDION

628725.0
BEARING HOUSING
RH

KL-0204

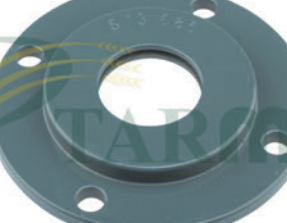
DOM 88-108-MEGA-MEDION

628726.0
BEARING HOUSING
LH

KL-0205

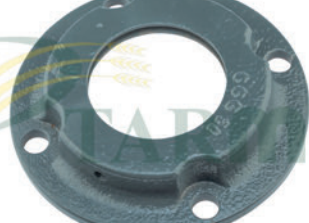
DOM78-88-98

629484.0
BEARING HOUSING
RH

KL-0206

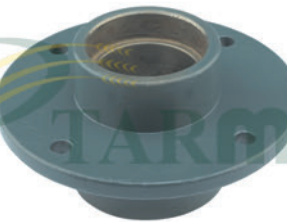
ALL MODELS

673685.0
CENTERING SHELL

KL-0207

ALL MODELS

673686.0
BEARING SHELL

KL-0208

TUCANO-320-330-430-440

549743.0
HOUSING

KL-0209

LEX

642495.0
BEARING UNIT
(Ø 50mm)

KL-2210

LEX

644700.1
BEARING UNIT
(Ø 60mm)

KL-2211

DOM

680794.0
CRANK ROD
(LONG)

KL-2213

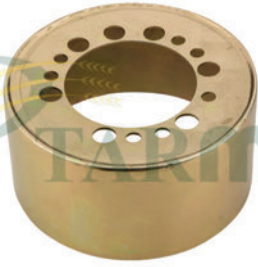
ALL MODELS

673082.2
HOUSING

KL-2214

COM-MEGA-DOM

674497.0
BEARING COVER

**KL-2215**

DOM-MEDION-MEGA-LEX

603059.1
COVER

KL-2216

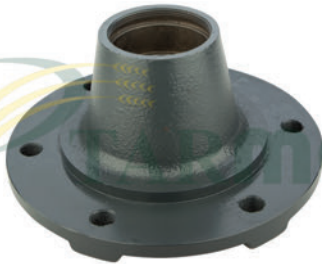
DOM-MEDION-MEGA-LEX

603397.1
COVER

KL-2217

DOM

647393.0
BEARING UNIT
(Ø 30mm) - (4 HOLES)

KL-2218

DOM-MEDION-MEGA-LEX

649959.0
WHEEL HUB

KL-2219

DOM-MEGA-MEDION

661193.2
HOUSING

KL-2220

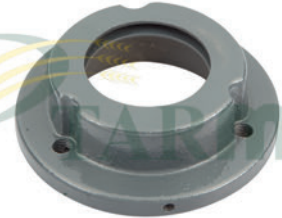
LEX

667404.2
BEARING UNIT

KL-2221

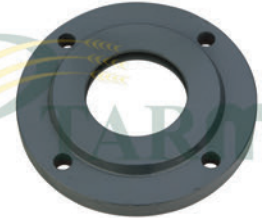
LEX

667618.0
BEARING UNIT

KL-2222

DOM-MEGA

674498.0
BEARING SHELL

KL-2224

DOM

680795.0
COVER

KL-2225

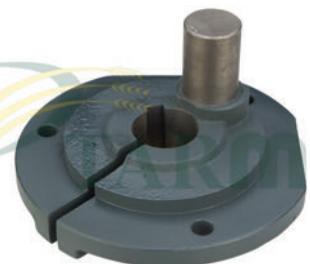
DOM

688482.0
BEARING UNIT

KL-2226

LEX

736873.1
BEARING SHELL

KL-2227

LEX

751858.1
ECCENTRIC HUB
LH

**KL-2228**

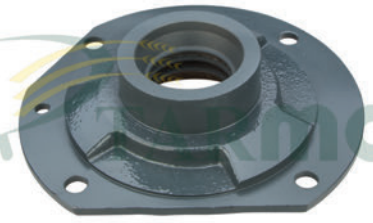
LEX

518047.0
BEARING SHELL

KL-2229

DOM-MEGA

626000.1
HUB

KL-2230

MEGA-TUCANO

628737.0
BEARING SHELL

KL-2231

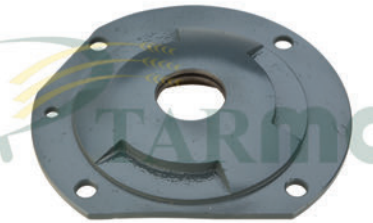
DOM

629193.2
BEARING UNIT

KL-2233

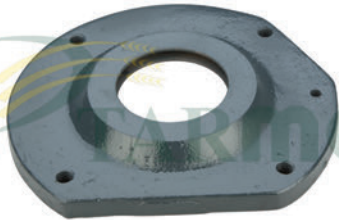
DOM-MEDION-MEGA

629423.0
BEARING UNIT

KL-2234

DOM-MEDION-MEGA-LEX

644415.0
BEARING SHELL

KL-2235

DOM-MEDION-MEGA-LEX

644416.0
BEARING SHELL

KL-2236

MEGA-LEX

646554.0
BEARING COVER

KL-2238

TUCANO 320-330

603065.1
THRUST PLATE

KL-2239

LEX

667532.0
THRUST PLATE
(ONLY PLATE)

KL-2240

LEX

670807.1-744969.1
CONTROL CYLINDER
(SET)

KL-2242

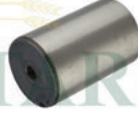
LEX

087652.0
HYDRAULIC PISTON

**KL-2243**

LEX

744966.1
PRESSURE FLANGE

KL-2245

LEX

670809.0
PLUNGER

KL-2246

LEX

629883.0
HUB
(INCL. CAM SECTION - W/O CAP)

KL-2247

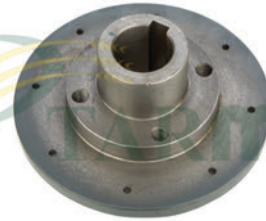
LEX

749911.1
COMPRESS. SPRING

KL-2248

DOM-MEDION-MEGA-LEX

629828.0
SCREW-ON PLATE

KL-2250

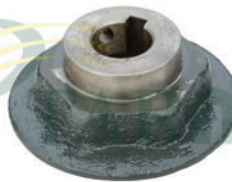
LEX

610463.0
COVER WITH LINING

KL-2251

LEX

604269.0-610464.0
HUB WITH LINING

KL-2252

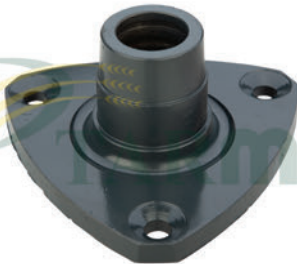
DOM

670218.2
CENTERING HUB

KL-2253

LEX

735436.0
HUB

KL-2255

DOM-MEGA-JAG

649666.0
PRESSURE FLANGE

KL-2256

ALL MODELS

688954.0-626782.1
KNIFE SUPPORT
(688955.0)

KL-2257

ALL MODELS

766961.0
BEAM BACK PART

**KL-2262**

DOM-LEX-MEDION-MEGA

649960.0
CAP**KL-2263**

LEX-TUCANO

630555.1
BEARING SHELL
LH**KL-2264**

LEX-TUCANO

630556.1
BEARING SHELL
RH**KL-2265**

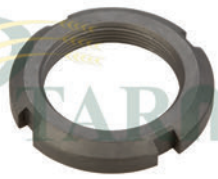
DOM-LEX-TUCANO-MEDION

642366.0
SLOTTED NUT
(M55x2mm)**KL-2266**

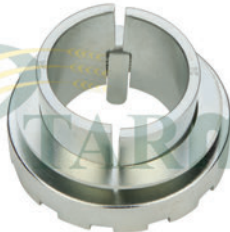
LEX

669639.0
SLOTTED NUT
(M65x2mm)**KL-2267**

DOM-LEX-TUC-MED

610359.1
SLOTTED NUT
(M50x1,5mm)**KL-2268**

DOM-LEX-TUC-MED

752212.1
SLOTTED NUT
(M40x1,5mm)**KL-2269**

DOM-TUCANO-MEDION

735013.0
TAPER LOCK SLEEVE
(H208)**KL-2271**

DOM-TUCANO-MEGA

752138.1
WASHER
(Ø 40mm)**KL-2272**

DOM-LEX-TUC-MED

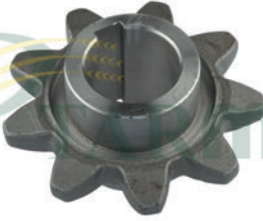
610338.0
LOCKING PLATE**KL-2273**

LEX

669640.0
LOCKING PLATE
(Ø 65mm)**KL-0210**

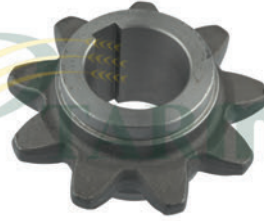
DOM-68-78-88-98-108

670489.1
SPROCKET
(Z-9) - (Ø 40mm) - (FORGED)

**KL-0211**

DOM-68-78-88-98-108

680582.3
SPROCKET
(Z-9) - (Ø 45mm) - (FORGED)

KL-0212

ALL MODELS

650869.0
SPROCKET
(Z-9) - (Ø 50mm) - (FORGED)

KL-0213

DOM-MEGA-MEDIAN

650787.0
SPROCKET
(Z-9) - (SPLINED) - (FORGED)

KL-0214

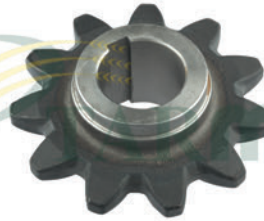
DOM-76-86-96-106

603507.0
SPROCKET
(Z-11) - (Ø 40mm) - (FORGED)

KL-0215

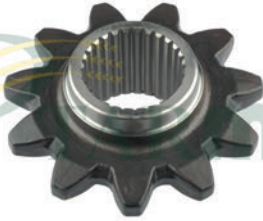
DOM-76-86-96-106

603508.0
SPROCKET
(Z-11) - (Ø 45mm) - (FORGED)

KL-0216

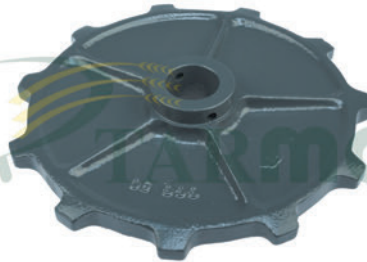
LEX-TUCANO

630351.0
SPROCKET
(Z-11) - (Ø 50mm) - (FORGED)

KL-0217

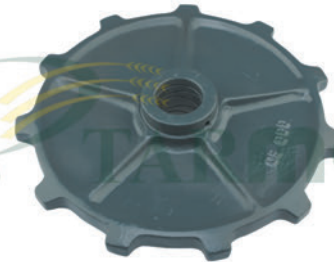
LEX

630635.0
SPROCKET
(Z-11) - (SPLINED) - (FORGED)

KL-0218

DOM-68-78-88-98-108

603513.0
SPROCKET
(Z-11) - RH

KL-0219

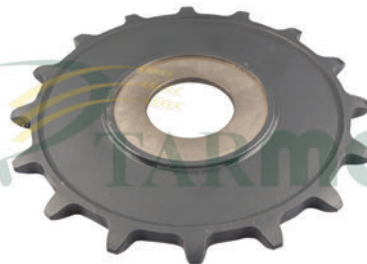
DOM-68-78-88-98-108

603514.1
SPROCKET
(Z-11) - LH

KL-0220

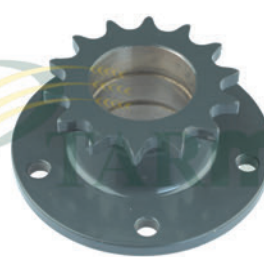
LEX

755482.0
SPROCKET
(Z-29)

KL-0221

DOM-MERKANT

651024.2
SPROCKET
(Z-16)

KL-0222

DOM-MEGA

753534.0
CHAIN PINION

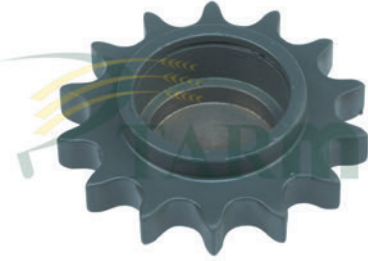
**KL-0223**

DOMI-MEGA-MEDION

503814.2
SPROCKET
(Z-14)

KL-0224

503995.1
TENSION PINION
(Z-14 - SET)

KL-0225

DOMI-MEDION-MEGA

503937.2
TENSION PINION
(Z-14)

KL-0226

DOMI-MEGA

673309.1
TENSION PINION
(Z-15)

KL-0227

DOMI-MEGA

673329.1
TENSION PINION
(Z-15) - (COMPLETE SET)

KL-0228

DOMI-MEDION-MEGA

670145.3
SPROCKET
(Z-56) - (ASA 60) - (STEEL)

KL-0229

DOMI-MEGA

645932.1
SPROCKET
(Z-56) - (ASA 60) - (STEEL)

KL-0230

DOMI-LEX-MEGA

665155.0
SPROCKET
(Z-60) - (ASA 60) - (STEEL)

KL-0231

DOMI-LEX-MEDION-MEGA

645992.0
REEL SPROCKET
(Z-50) - (ASA 50)

KL-0232

DOMI-LEX-MEGA

673327.1
DOUBLE SPROCKET
(Z-58 / 14) - (ASA 50)

KL-0233

DOMI

629670.0
SPROCKET
(Z-50) - (ASA 60)

KL-0234

DOMI-LEX-MEGA

670203.0
SPROCKET
(Z-24) - (ASA 50)

**KL-0235**

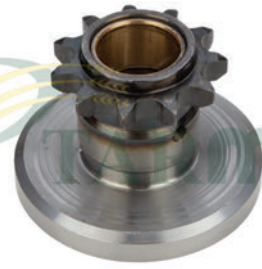
DOM-LEX-MEGA

629982.1
SPROCKET
(Z-19) - (ASA 50)

KL-0236

LEX-TUCANO

666911.0
SPROCKET
(Z-50) - (ASA 60H)

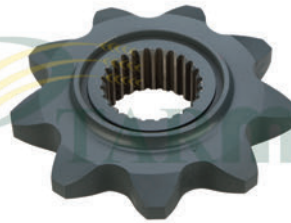
KL-0237

LEX

735433.2
SPROCKET
(Z-11) - (ASA 60)

KL-0238

SPROCKET
(Z-56)

KL-0239

JAG

912185.0
SPROCKET
(Z-9)

KL-0240

ALL MODELS

809053.0
CHAIN PINION
(Z-16)

KL-0241

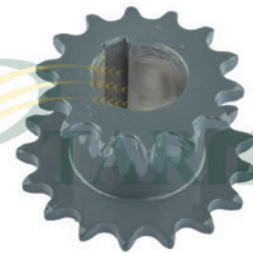
ALL MODELS

809052.1
CHAIN PINION
(Z-16) - (COMPLETE)

KL-0242

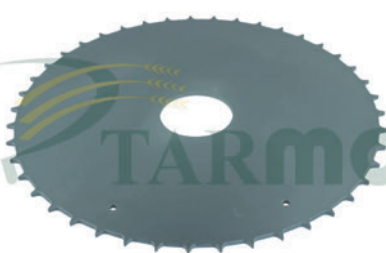
DOM

670219.0
SPROCKET
(Z-22)

KL-0243

DOM-MEGA

648119.0
DOUBLE SPROCKET
(Z-14 / 17) - RH

KL-0244

DOM-MEGA

614992.0
REEL SPROCKET
(Z-43)

KL-0245

ALL MODELS

645333.1
DOUBLE SPROCKET
(Z-13 / 14)

KL-0246

ALL MODELS

678856.2
SPROCKET
(Z-7) - (Ø 26mm) - (FORGED)

**KL-0247**

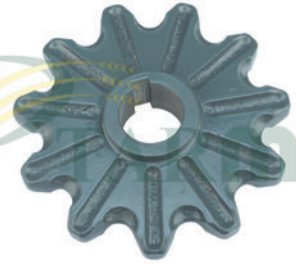
ALL MODELS

674143.4
SPROCKET
(Z-7) - (Ø 30mm) - (FORGED)

KL-0248

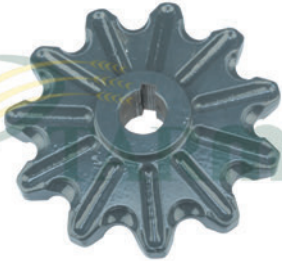
ALL MODELS

674406.1
SPROCKET
(Z-7) - (Ø 35mm) - (FORGED)

KL-0249

LEX

735895.0
SPROCKET
(Z-11) - (Ø 35mm) - (SPHERO)

KL-0250

LEX

735896.0
SPROCKET
(Z-11) - (Ø 26mm) - (SPHERO)

KL-0251

LEX

735949.2
SPROCKET
(Z-17)

KL-0252

LEX

757271.0
SPROCKET
(Z-24)

KL-0253

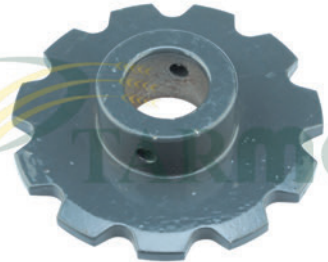
LEX

735355.0
SPROCKET
(Z-11)

KL-0254

MEGA

639595.1
SPROCKET
(Z-23)

KL-0255

DOM

600967.1
SPROCKET
(Z-11)

KL-0256

DOM

605134.1
SPROCKET
(Z-17)

KL-0257

DOM

605421.1
SPROCKET
(Z-20)

KL-0258

DOM

605481.0
SPROCKET
(Z-23)

**KL-0259**

605484.0
SPROCKET
(Z-17)

KL-0260

748596.0
SPROCKET
(Z-23)

KL-0261

748595.0
SPROCKET
(Z-20)

KL-0262

673330.1
DRIVING HUB

KL-0263

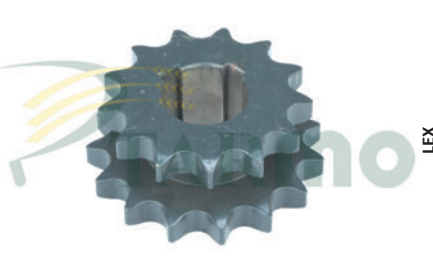
642485.0
SPROCKET
(Z-14 / 14)

KL-0264

608985.0
SPROCKET
(Z-50)

KL-0265

818767.0
TENSION PINION
(Z-14)

KL-0266

754009.0
DOUBLE SPROCKET
(Z-13 / 15)

KL-0267

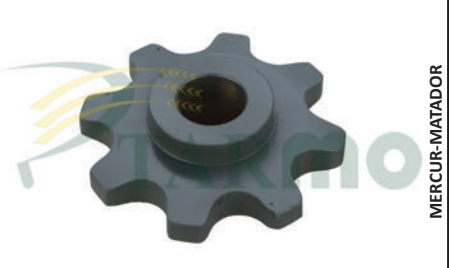
753533.0
REEL SPROCKET
(Z-58)

KL-0268

682993.1
SPROCKET

KL-0269

176932.0
SPROCKET
(Z-68)

KL-0270

610688.0
SPROCKET
(Z-8) - (Ø 30mm)

**KL-0271**

DOM-MERCUR-MERCATOR

503030.0
SPROCKET
(Z-7) - (Ø 26mm)

KL-0272

MERCUR-MERCATOR

503027.1
SPROCKET
(Z-7) - (Ø 30mm)

KL-0273

DOM

626798.0
SPROCKET
(Z-50) - (ASA 2050)

KL-0274

LEX

795449.0
SPROCKET
(Z-11) - (Ø 39mm)

KL-0275

DOM

619272.1
SPROCKET
(Z-14) - (Ø 30mm)

KL-0276

TUCANO

646126.1
SPROCKET
(Z-19) - (GRAIN)

KL-0277

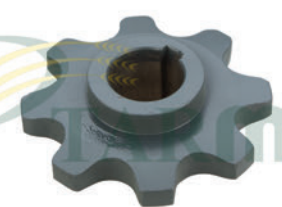
LEX

734986.1
SPROCKET
(Z-15)

KL-0278

LEX

755422.0
SPROCKET
(Z-40)

KL-0279

DOM 38-48-58

610199.0
SPROCKET
(Z-8) - (Ø 35mm)

KL-0282

ALL MODELS

676235.3-626295.1
DOUBLE FINGER
(FORGED) - (648406.0)

KL-0283

ALL MODELS

676249.1-626294.0
DOUBLE FINGER
(FORGED)

KL-0284

ALL MODELS

676241.4-626296.1
END FINGER

**KL-0285**

ALL MODELS

611203.1
KNIFE
(Z-20)

KL-0290

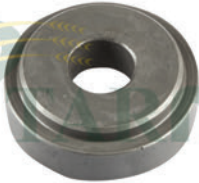
LEX

736872.0
REVOLVING KNIFE
(Ø 20mm) - (173x52x4mm)

KL-0291

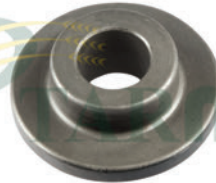
ALL MODELS

060017.2
REVOLVING KNIFE
(Ø 18mm) - (173x50x3mm)

KL-0293

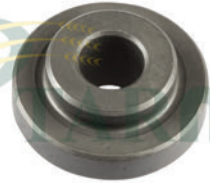
ALL MODELS

060015.0
BUSHING - (OUTER Ø 25mm)
(INNER Ø 10,50mm)

KL-0294

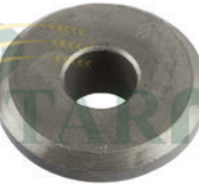
ALL MODELS

060016.2
BUSHING - (OUTER Ø 18mm)
(INNER Ø 10,50mm)

KL-0295

LEX-TUCANO

736871.2
BUSHING - (OUTER Ø 20mm)
(INNER Ø 10,50mm)

KL-0296

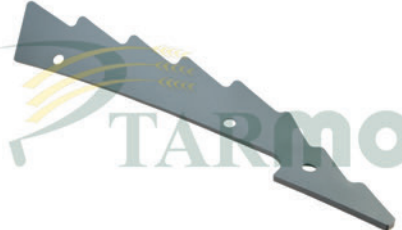
LEX-TUCANO

736922.0
WASHER - (OUTER Ø 30mm)
(INNER Ø 10,50mm)

KL-2993

LEX

782505.1
TOOTHED BAR
(460x135x6mm)

KL-2994

LEX

782530.1
TOOTHED BAR
(460x135x6mm)

KL-2995

LEX

782531.0
STRIPPER PLATE
(490x120x6mm)

KL-2996

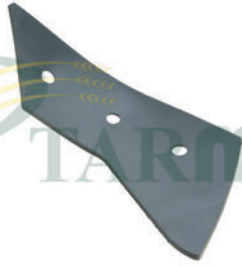
LEX

782510.0
STRIPPER PLATE
(490x120x6mm)

KL-2997

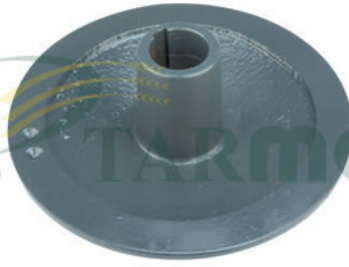
LEX

782507.0
STRIPPER PLATE
(229x175x6mm)

**KL-2998**

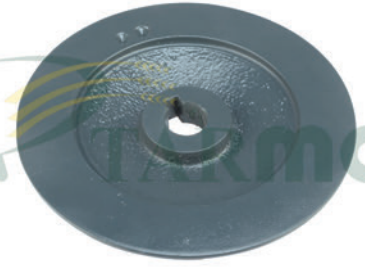
LEX

782528.0
STRIPPER PLATE
(229x175x6mm)

KL-0300

DOM-LEX-MEGA

670287.0
VARIATOR PULLEY

KL-0301

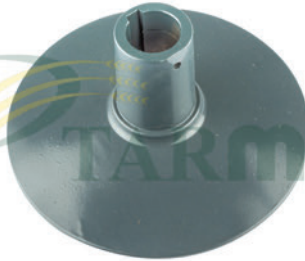
DOM-LEX-MEGA

670215.1
VARIATOR PULLEY

KL-0302

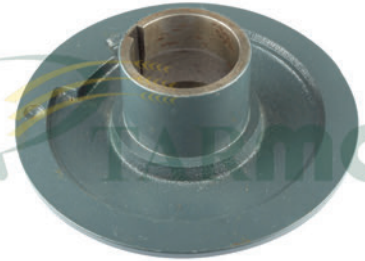
DOM-LEX-MEGA

670202.1
VARIATOR PULLEY

KL-0303

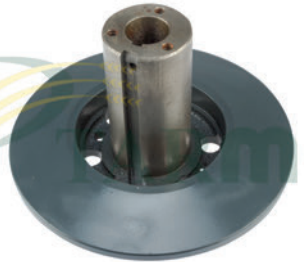
DOM-LEX-MEGA

670288.1
VARIATOR PULLEY

KL-0304

DOM-LEX-MEGA

629654.0
CONTROL DISC

KL-0305

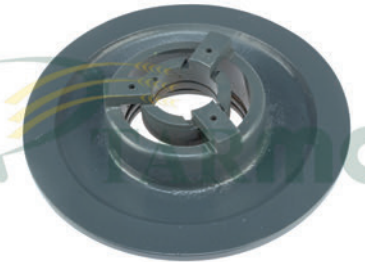
DOM-LEX-MEGA

629653.1
CONTROL DISC

KL-0306

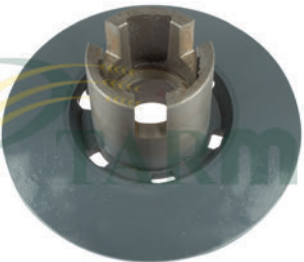
ALL MODELS

683303.2
V-BELT PULLEY

KL-0307

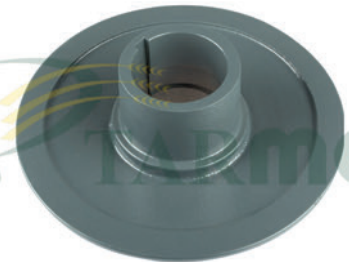
DOM-MEDION-MEGA

629267.0
CONTROL DISC LOOSE

KL-0308

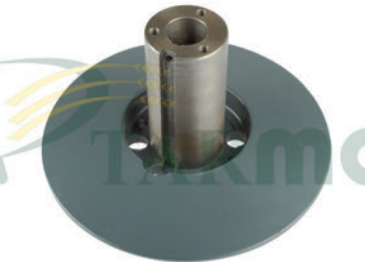
DOM-MEDION-MEGA

629268.0
CONTROL DISC

KL-0309

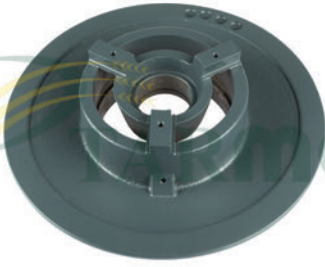
DOM-LEX-MEGA

603408.0
VARIATOR PULLEY

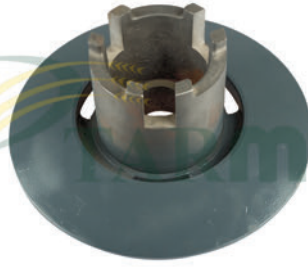
KL-0310

DOM-LEX-MEGA

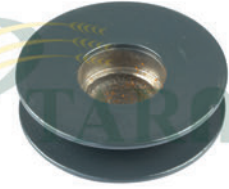
603406.0-603407.1
VARIATOR PULLEY

**KL-0311**

DOM-LEX-MEGA

603403.0-749999.0
VARIATOR PULLEY**KL-0312**

DOM-LEX-MEGA

603402.0-749997.0
VARIATOR PULLEY**KL-0313**

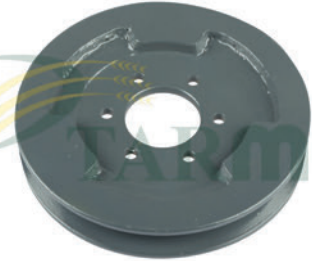
DOM-MEDION-MEGA

773231.1
TENSION PULLEY**KL-0314**

DOM-MEDION-MEGA

773232.0
TENSION PULLEY
(WITH BEARING)**KL-0316**

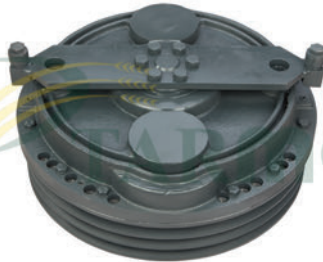
DOM

724128.3
V-BELT PULLEY**KL-0318**

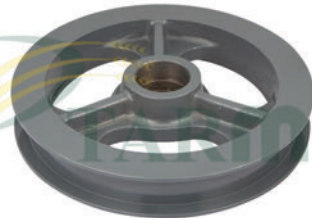
DOM

673715.1
V-BELT PULLEY**KL-0319**

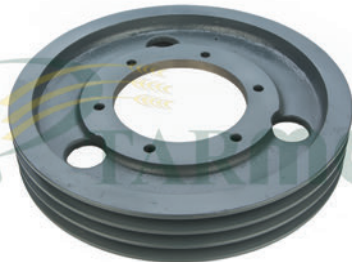
DOM-MED-MEGA-TUC

772169.1
TENSION ROLL**KL-0320**

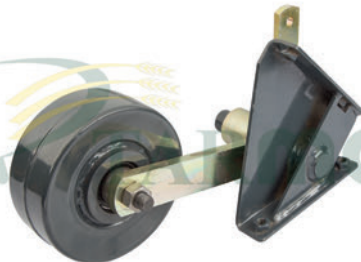
DOM-MED-MEGA-TUC

628724.1
PLANETARY GEAR**KL-0321**

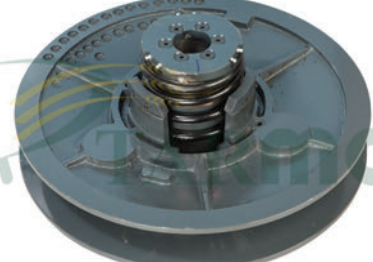
ALL MODELS

720792.1
TENSION ROLL
(Ø 220mm)**KL-0322**

DOM-MEDION-MEGA

661194.0
V-BELT PULLEY**KL-0323**

ALL MODELS

644467.0
TENSION ROLL ASS.**KL-0324**

LEX

667418.1
DRIVEN PULLEY UNIT
(COMPLETE)

**KL-0325**

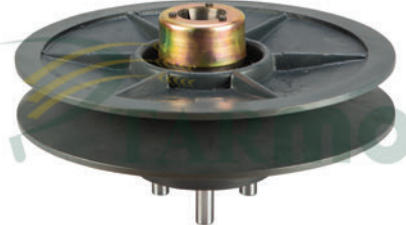
LEX

355752.0
DRIVEN PULLEY UNIT
(COMPLETE)

KL-0326

LEX

660917.2
DRIVE ASSEMBLY

KL-0327

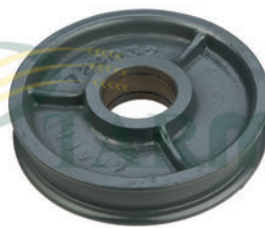
LEX

660922.2
DRIVE ASSEMBLY

KL-0328

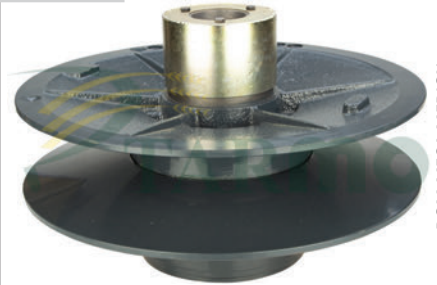
DOM-MEDION-MEGA

724375.0
RETURN GUIDE ROLL

KL-0329

DOM-LEX-MEGA-JAG

724032.1
TENSION ROLL

KL-3291

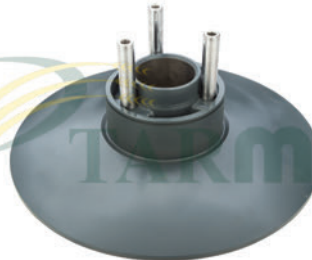
DOM-MEGA-MEDION

661228.0
DRIVE ASSEMBLY

KL-3292

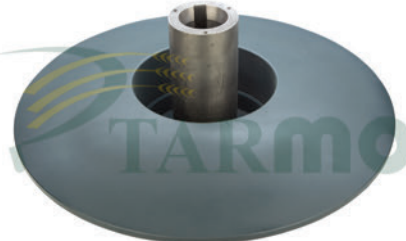
TUCANO 320-330

603313.2
DRIVEN PULLEY UNIT
(COMPLETE)

KL-3295

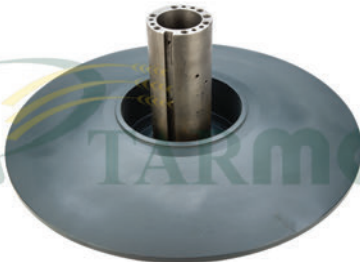
LEX

667418A
HALF PULLEY

KL-3296

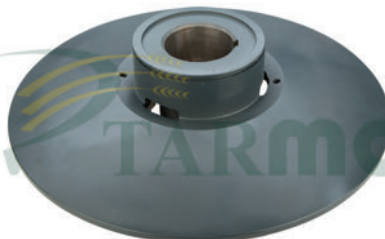
LEX

667418B
HALF PULLEY

KL-3297

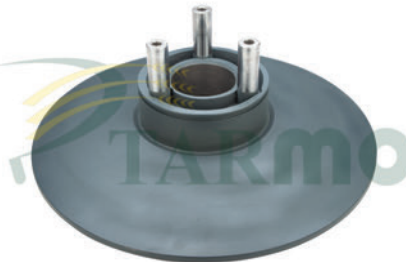
LEX

660922A
HALF PULLEY

KL-3298

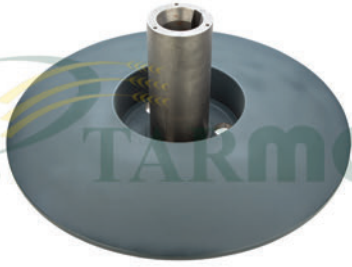
LEX

660922B
HALF PULLEY

KL-3299

LEX

660917A
HALF PULLEY

**KL-3300**

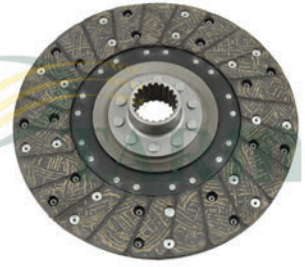
LEX

660917B
HALF PULLEY

KL-0330

DOM 68

679995.1-643605.1
PRESSURE PLATE

KL-0331

DOM 68-78-88-JAG 800

679996.1-694083.0
CLUTCH PLATE

KL-0332

DOM-MEDION-MEGA

619510.1-610330.1
BRAKE LINING

KL-0333

DOM-LEX-MED-MEGA-JAG

648507.1
CLUTCH LINING

KL-0334

DOM-JAG

631663.0
FILE RING

KL-0339

DOM

WATER PUMP

KL-0340

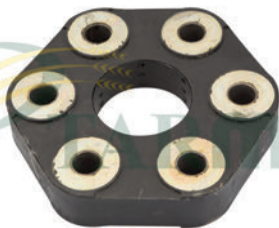
DOMINATOR

655340.0
MASTER CYLINDER

KL-0341

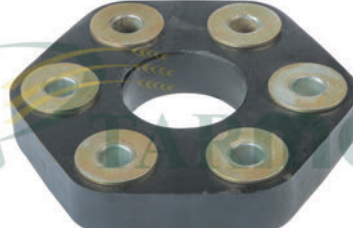
DOM 48-58-68-78-88-98

655339.1
BRAKE CYLINDER

KL-0342

DOM-MEGA-JAG

679892.0-657556.0
COUPLING DISK

KL-0343

ALL MODELS

624545.1-796144.0
COUPLING DISK

KL-0344

ALL MODELS

679476.1
HYDRAULIC PIPE

**KL-0345**

DOM

729445.0
STOP PAWL**KL-0346**

ALL MODELS

654587.0-941495.0
CENTRE CROSS ASSY.**KL-0347**

ALL MODELS

972580.0
CENTRE CROSS ASSY.**KL-0348**

DOM-MEGA

650170.0
DRIVE SHAFT**KL-0349**

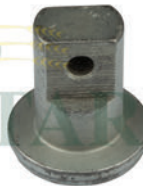
MEGA-MEDION

648159.0
DRIVE SHAFT**KL-0350**

DOM-LEX-MEGA

648068.3
FINGER
(Ø 16mm) x (245mm)**KL-0351**

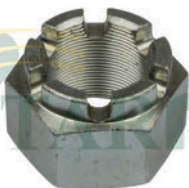
DOM-MEGA

603759.1
FINGER
(Ø 16mm) x (205mm)**KL-0352**

LEX

626963.1-626627.0
PLUG**KL-0353**

LEX

626628.0-626964.1
END PIECE**KL-0354**

ALL MODELS

624157.0
CASTELLATED NUT
(DRIVE SHAFT)**KL-0355**

DOM-LEX-JAG-MEGA

609752.0
PAWL**KL-0356**

TUCANO-LEX

FINGER
(270mm)



TARMO A.Ş.

CLAAS

www.tarmo.com.tr

KL-0357



DOM-LEX-MEDION-MEGA

643756.1
COMPRESS. SPRING

KL-0358



LEX

626987.0
SPRING TIME

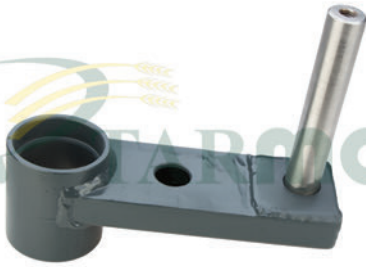
KL-0359



ALL MODELS

800021.0
SPRING TIME

KL-3590



DOM-MEGA-COM

670210.2
TENSIONING ARM

KL-0360



TUCANO

520902.0-520903.0
CONVEYOR CHAIN SET - (3 PCS SET)
(119 LINKS) - (REINFORCED)

KL-0361



DOM78-88-98-108-MEDION

540033.0-540034.0
CONVEYOR CHAIN SET - (3 PCS SET)
(107 LINKS) - (REINFORCED)

KL-0362



MEDION 340

540034.0
CONVEYOR CHAIN SET - (4 PCS SET)
(107 LINKS) - (REINFORCED)

KL-0363



LEX

630567.2-630643.2
CONVEYOR CHAIN SET
(4 PCS SET) - (REINFORCED)

KL-0365



DOM78-88-98-108-MEDION

605456.2
ELEVATOR CHAIN
(GRAIN)

KL-0366



DOM78-88-98-108-MEDION

678448.0
ELEVATOR CHAIN
(TAILINGS)

KL-0367



DOM78-88-98-108-MEDION

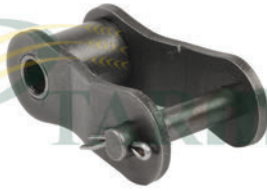
680494.0-680493.1
CHAIN LOCK

KL-0368



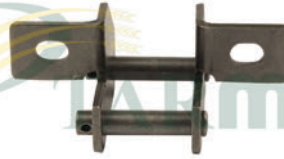
DOM78-88-98-108-MEDION

002860.0
LOCKING LINK

**KL-0369**

DOM75-88-98-108-MEDION

002861.0
CHAIN LOCK BEND.

KL-0370

DOM75-88-98-108-MEDION

687545.0-639688.0
ANGULAR STRAP

KL-0371

ALL MODELS

650191.2
ROLLER CHAIN
(ASA 50-1)

KL-0372

ALL MODELS

650174.0
ROLLER CHAIN
(ASA 60-1)

KL-0373

ALL MODELS

ROLLER CHAIN
(ASA 80-1)

KL-0374

ALL MODELS

002858.0
CONNECTION LINK FOR ROLLER
CHAIN - (ASA 50-1)

KL-0375

ALL MODELS

670251.0
CONNECTION LINK FOR ROLLER
CHAIN - (ASA 60-1)

KL-0376

ALL MODELS

CONNECTION LINK FOR ROLLER
CHAIN - (ASA 80-1)

KL-0377

LEX

795362.1-553403.0
ELEVATOR CHAIN
(GRAIN) - (REINFORCED)

KL-0378

MEGA-TUCANO

549541.0
ELEVATOR CHAIN
(GRAIN) - (REINFORCED)

KL-0379

MEDION-MEGA-TUCANO

553463.0
ELEVATOR CHAIN
(GRAIN) - (REINFORCED)

KL-0380

LEX

735367.0-601819.0
ELEVATOR CHAIN
(TAILINGS) - (REINFORCED)

**KL-0381**

LEX

**ROLLER CHAIN
(ASA 60H-1) - (REINFORCED)**

KL-0382

ALL MODELS

**002859.0
CHAIN LOCK BEND.
(FOR ASA 50-1)**

KL-0383

ALL MODELS

**CONNECTION LINK
(FOR ASA 60H-1)**

KL-0384

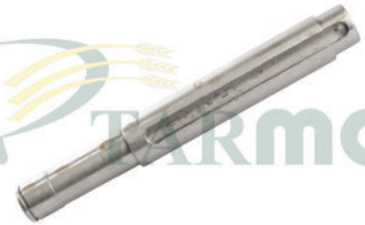
ALL MODELS

**CHAIN LOCK BEND.
(ASA 60H-1)**

KL-0391

DOM 48-58-68-130-140

**646734.0
DRUM SHAFT**

KL-0392

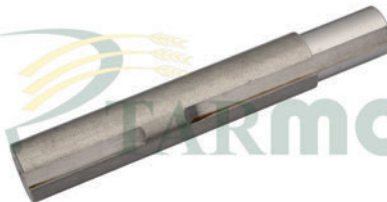
DOM-LEX-MEGA

**670214.1
DRIVE SHAFT**

KL-0393

DOM-LEX-MEGA

**670201.2
BEARING TUBE**

KL-0394

DOM

**676298.0
DRIVE SHAFT**

KL-0395

DOM

**673746.0
SHAFT**

KL-0396

DOM

**600410.2
TRUNNION
(235mm) - (FORGED) - RH**

KL-0397

DOM

**600988.0
TRUNNION
(210mm) - (FORGED) - LH**

KL-0398

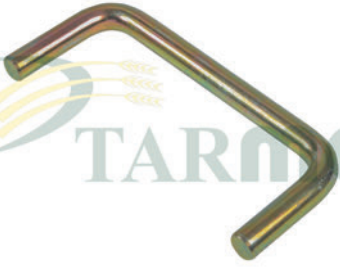
DOM 108-118

**600410.3
TRUNNION
(240mm) - (FORGED) - RH**

**KL-0399**

DOM-MEDION

647858.1
TRUNNION
(230mm) - (FORGED) - LH

KL-0400

DOM-LEX-MEDION-MEGA

673081.1
ROCKER ARM

KL-0401

DOM-MEDION-MEGA-COM

600641.0
SHAFT
(Ø 26mm) - (297mm)

KL-0402

DOM-MEDION-MEGA

600414.0
DRUM SHAFT

KL-0403

LEX-MEGA

759641.2
PIN

KL-0404

LEX

353284.0
SHAFT
(Ø 35x612,4mm)

KL-0406

ALL MODELS

772620.0
PIN

KL-0407

DOM-MEDION-MEGA

678846.0
SHAFT
(Ø 26mm) - (290,50mm)

KL-0408

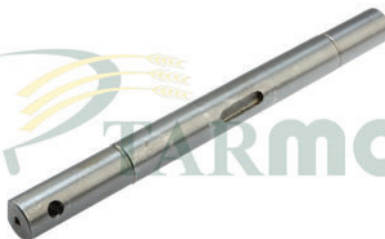
DOM-MEDION-MEGA

645006.3
COUNTER SHAFT
(Ø 40mm) x (1933mm)

KL-0409

DOM-MEDION-MEGA

650896.1
SHAFT
(Ø 20mm) - (688mm) - LH

KL-0410

TUCANO-LEX

725458.0
SHAFT
(Ø 26mm) - (261mm)

KL-0411

LEX

757105.0
SHAFT
(Ø 35mm) - (300mm)

**KL-0412**

LEX

736056.1
SHAFT
(Ø 55mm) - (1881mm)

KL-0413

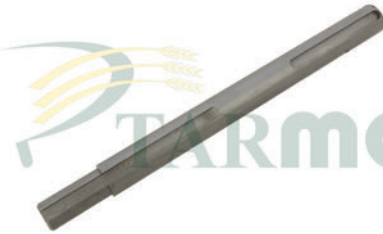
LEX

736135.0
SHAFT
(Ø 48mm) - (1601mm)

KL-0414

DOM-MEGA

661200.1
FLANGE SHAFT
(FORGED)

KL-0415

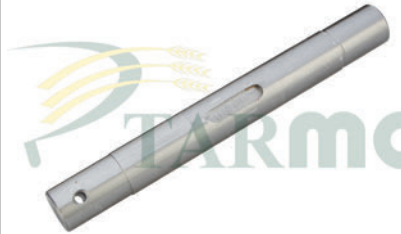
DOM 68-78-MEGA-MEDION

645342.0
DRIVE SHAFT
(Ø 30mm) - (363mm)

KL-0416

LEX-TUCANO

626308.2-626383.0
DRIVE SHAFT

KL-0417

MEGA-MEDION-LEX-TUCANO

735331.1
SHAFT
(Ø 26mm) - (216mm)

KL-0421

DOM

647454.2
BEARING SUPPORT

KL-0422

DOM-MEGA

648164.0
COUNTERSHAFT
(992mm)

KL-0423

DOM-MEGA

648179.0
COUNTERSHAFT
(1446mm)

KL-0424

DOM 68-78

650835.0
COUNTERSHAFT
(1284mm)

KL-0425

DOM 48-58-68-130-140-150

725537.1
COUNTER SHAFT
(1484mm)

KL-0426

LEX

667903.1
COUNTER SHAFT
(2255,50mm)

**KL-0427**

LEX

667671.0
COUNTER SHAFT
(1975,50mm)

KL-0428

DOM-MEGA

644167.2
COUNTER SHAFT
(1898mm)

KL-0429

MEGA-MEDION

644517.0
COUNTER SHAFT
(1898mm)

KL-0430

DOM

600378.2
COUNTER SHAFT
(1619mm)

KL-0431

DOM

629692.2
COUNTER SHAFT
(2203mm)

KL-0432

MEGA-MEDION

646249.3
COUNTER SHAFT
(1638mm)

KL-0433

DOM

603525.4
CONVEYOR SHAFT
(1291mm)

KL-0434

DOM-MEGA-MEDION

650689.0
CONVEYOR SHAFT
(1544mm)

KL-0435

DOM-MEGA-MEDION

650792.1
CONVEYOR SHAFT
(1807mm)

KL-0436

DOM-MEGA-MEDION

630656.0
CONVEYOR SHAFT
(1650mm)

KL-0437

LEX

630379.0
CONVEYOR SHAFT
(1930mm)

KL-0438

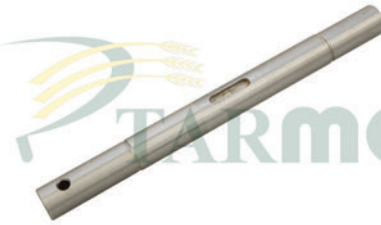
LEX

630637.1
CONVEYOR SHAFT
(1807mm)

**KL-0439**

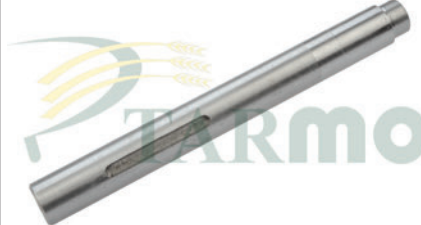
LEX

630408.1
CONVEYOR SHAFT
(2039mm)

KL-0444

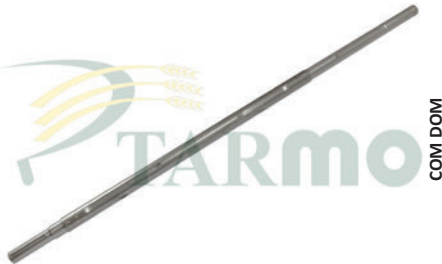
DOM

605127.3
SHAFT
(293mm)

KL-0445

TUCANO

644384.0
COUNTERSHAFT
(275mm) - (Ø 30mm)

KL-0447

COM DOM

603733.5
CONVEYOR SHAFT
(1550mm) - (Ø 45mm)

KL-0448

COM-MEGA-DOM

648184.0
COUNTERSHAFT
(2212mm)

KL-0449

DOM-MEGA-TUCANO

600415.0
DRUM SHAFT
(1384mm)

KL-0450

DOM 68-78

703856.1-729488.0
STRAW WALKER SHAFT
(Ø 31mm) - (FRONT)

KL-0451

DOM 68-78

600091.2-729490.0
STRAW WALKER SHAFT
(Ø 31mm) - (REAR)

KL-0452

DOM 78-88-98

670945.2
STRAW WALKER SHAFT
(Ø 31mm) - (FRONT)

KL-0453

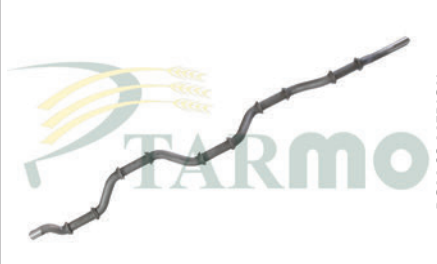
DOM 78-88-98

684021.1
STRAW WALKER SHAFT
(Ø 31mm) - (REAR)

KL-0454

DOM 98-MEDION

670945.4
STRAW WALKER SHAFT
(Ø 35mm) - (FRONT)

KL-0455

DOM 98-MEDION

605668.2
STRAW WALKER SHAFT
(Ø 35mm) - (REAR)

**KL-0456**

DOM 105-106-108

176968.0-678500.3
STRAW WALKER SHAFT
(Ø 35mm) - (FRONT)

KL-0457

DOM 105-106-108

678513.3
STRAW WALKER SHAFT
(Ø 40mm) - (REAR)

KL-0458

DOM 68-78

726985.0
STRAW WALKER SHAFT
(Ø 31mm) - (FRONT)

KL-0459

DOM 68-78

726986.0
STRAW WALKER SHAFT
(Ø 31mm) - (REAR)

KL-0460

DOM 68-78

726985.0
STRAW WALKER SHAFT
(Ø 31mm) - (FRONT)

KL-0461

DOM 68-78

726986.0
STRAW WALKER SHAFT
(Ø 31mm) - (REAR)

KL-0462

DOM 98-MEDION

755554.0
STRAW WALKER SHAFT
(Ø 35mm) - (FRONT)

KL-0463

DOM 98-MEDION

735011.1
STRAW WALKER SHAFT
(Ø 35mm) - (REAR)

KL-0464

DOM 78-88-98

735008.0
STRAW WALKER SHAFT
(Ø 31mm) - (FRONT)

KL-0465

DOM 78-88-98

735012.0
STRAW WALKER SHAFT
(Ø 31mm) - (REAR)

KL-0466

DOM 105-106-108

735032.0-735034.1
STRAW WALKER SHAFT
(Ø 35mm) - (FRONT)

KL-0467

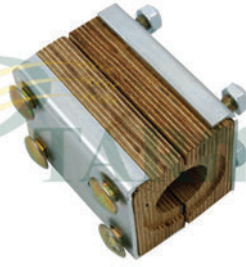
DOM 105-106-108

735033.0
STRAW WALKER SHAFT
(Ø 40mm) - (REAR)

**KL-0469**

DOMI-MEGA-MEDION

678258.2
WOODEN BEARING
(Ø 35mm)

KL-0470

DOM78-88-98-108-MEDION

678258.2
STRAW WALKER BEAR
(Ø 35mm) - (COMPLETE)

KL-0471

DOMI-MEGA-MEDION

678522.0
STRAW WALKER BEAR
(Ø 40mm)

KL-0472

DOM 68-76-78

618186.2
STRAW WALKER BEAR
(Ø 31mm)

KL-0473

DOM-MEGA

618254.2
STRAW WALKER BEAR
(Ø 31mm)

KL-0474

DOM-MEGA

648876.0
CONTROL ARM

KL-0476

DOM 68

661667.0-600048.0
WOODEN BEARING ASSY.
(Ø 31mm)

KL-0477

DOM-MEGA

661711.0-687106.0
WOODEN BEARING ASSY.
(Ø 36mm)

KL-0478

DOM-MEGA

650867.0
WOOD LATH

KL-0480

ALL MODELS

650863.1
CONVEYOR BAR - (605mm)
(4mm - U - GALVANIZED) - RH

KL-0481

ALL MODELS

650864.1
CONVEYOR BAR - (605mm)
(4mm - U - GALVANIZED) - LH

KL-0482

LEX

517935.0
CONVEYOR BAR - (560mm)
(4mm - GALVANIZED)

**KL-0483**

645232.2
CONVEYOR BAR - (860mm)
(4mm - GALVANIZED)

KL-0484

520163.0
CONVEYOR BAR - (605mm)
(4mm - GALVANIZED)

KL-0485

603506.1
CONVEYOR BAR - (9625mm)
(4mm - GALVANIZED)

KL-0486

630565.1
CONVEYOR BAR - (740mm)
(4mm - U - GALVANIZED) - RH

KL-0487

630566.1
CONVEYOR BAR - (740mm)
(4mm - U - GALVANIZED) - LH

KL-0488

630642.1
CONVEYOR BAR - (650mm)
(4mm - GALVANIZED)

KL-0489

603679.1
CONVEYOR BAR - (760mm)
(4mm - U - GALVANIZED) - LH

KL-0490

603681.1
CONVEYOR BAR - (760mm)
(4mm - U - GALVANIZED) - RH

KL-0491

603742.1
CONVEYOR BAR - (650mm)
(4mm - U - GALVANIZED) - LH

KL-0492

603743.1
CONVEYOR BAR - (650mm)
(4mm - U - GALVANIZED) - RH

KL-0493

645083.1
CONVEYOR BAR - (710mm)
(4mm - U - GALVANIZED) - LH

KL-0494

645081.1
CONVEYOR BAR - (710mm)
(4mm - U - GALVANIZED) - RH

**KL-0495**

DOM 108-118-MEGA 208

650713.1
CONVEYOR BAR - (680mm)
(4mm - GALVANIZED)

KL-0496

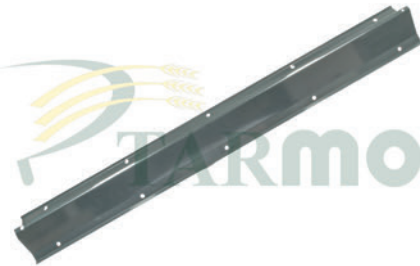
TUCANO

518241.1
CONVEYOR BAR - (470mm)
(4mm - GALVANIZED)

KL-0501

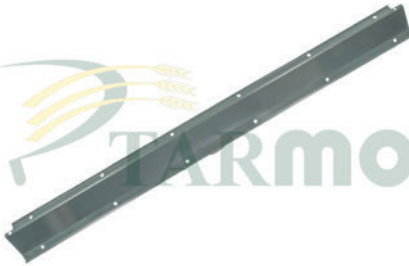
DOM

608548.1
IMPELLER PLATE
(1060x207x2mm)

KL-0502

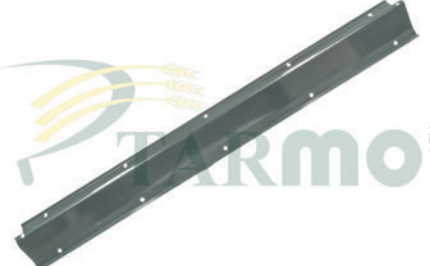
DOM-MEGA-MEDION

608549.1-555768.0
IMPELLER PLATE
(1320x207x2mm)

KL-0503

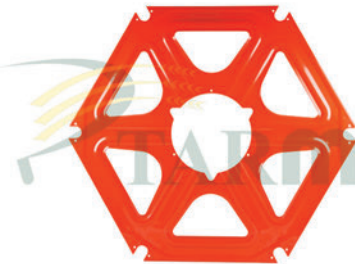
DOM-MEGA-MEDION

634981.1
IMPELLER PLATE
(1580x207x2mm)

KL-0504

LEX

508043.0-777064.0
IMPELLER PLATE
(1410x211x2mm)

KL-0505

LEX-TUCANO

626466.0
REEL SPIDER
(Ø 220mm)

KL-0506

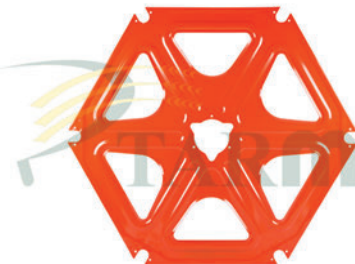
DOM-MEGA-MEDION

677474.1
REEL SPIDER
(Ø 134mm)

KL-0507

DOM-MEGA-MEDION

677070.1
STEERING STAR
(Ø 188mm)

KL-0508

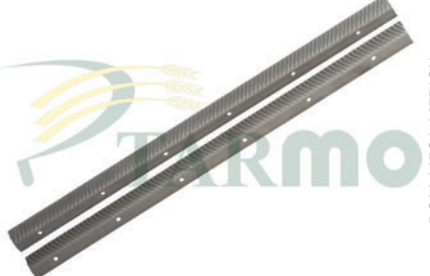
DOM-MEGA-MEDION

677318.1
REEL SPIDER
(Ø 134mm)

KL-0510

DOM

177531.0
RASP BAR
(1038mm) - (3 LH + 3 RH) - (SET)

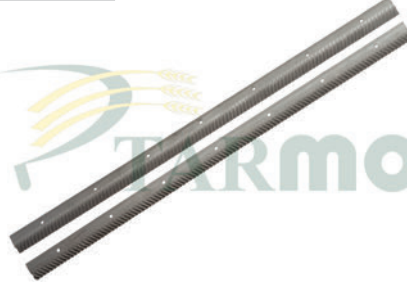
KL-0511

DOM-MEGA-MEDION

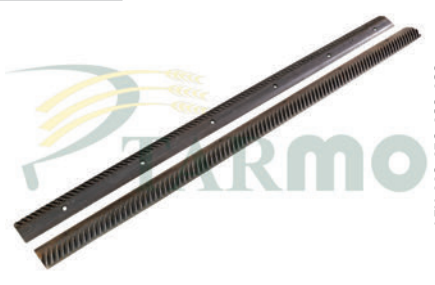
177532.0
RASP BAR
(1300mm) - (3 LH + 3 RH) - (SET)

**KL-0512**

LEX

181741.0-181742.0**RASP BAR****(1400mm) - (4 LH + 4 RH) - (SET)****KL-0513**

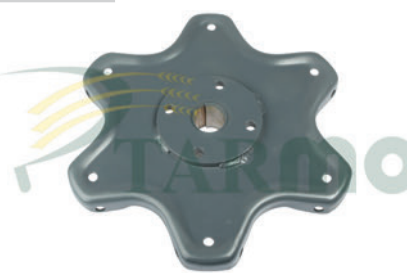
DOM 106-108-118-MEDION 340

177533.0**RASP BAR****(1565mm) - (3 LH + 3 RH) - (SET)****KL-0514**

LEX 440-450-460-480

181743.0-181744.0**RASP BAR****(1680mm) - (3 LH + 3 RH) - (SET)****KL-0517**

DOM-MEGA-MEDION

600735.3**THRESHING DRUM
(COMPLETE)****KL-0522**

DOM-MEGA-MEDION

600471.1**DRUM COVER****KL-0523**

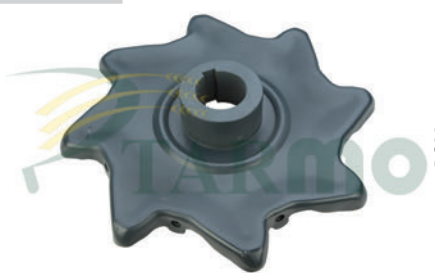
DOM-MEGA-MEDION

600104.0**DRUM COVER****KL-0524**

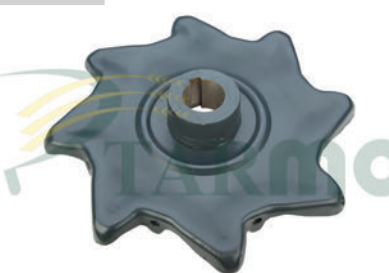
DOM-MEGA-MEDION

618522.0**DRUM BOTTOM****KL-0525**

ALL MODELS

628050.1**SPIKE TOOTH****KL-0526**

DOM

617865.0-674478.1**DRUM BOTTOM****KL-0527**

MEGA-MEDION-LEX

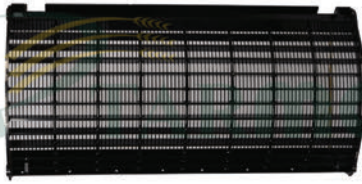
634977.0**DISC****KL-0528**

MEGA-MEDION-LEX

634974.0**DISC****KL-0529**

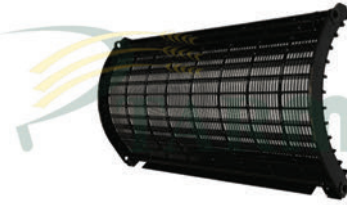
MEGA-MEDION-LEX

674479.0-617601.0**DISC**

**KL-0530**

DOM 68-78

601750.1-726973.0
CONCAVE - (617714.0)

KL-0531

DOM 86-88-96-98

601754.1
CONCAVE

KL-0534

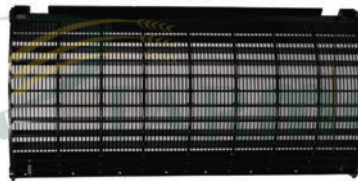
LEX 540-560-580

777249.1
CONCAVE
(3 PARTS)

KL-0535

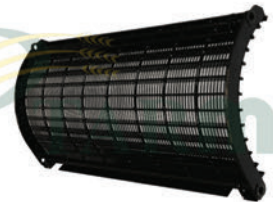
DOM 88-98-108-MED 310

756070.0-662815.0
CONCAVE
(3 PARTS)

KL-0536

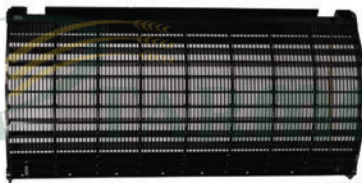
DOM 108-118

600230.3
CONCAVE
(CORN) - (6 WALKERS)

KL-0537

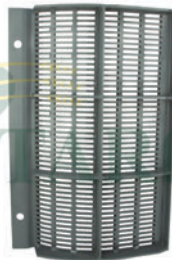
DOM 106-108-118

601753.1
CONCAVE
(GRAIN) - (6 WALKERS)

KL-0538

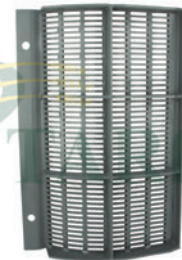
DOM 88-98-TUCANO 320

662817.0
CONCAVE
(CORN) - (3 PARTS)

KL-0539

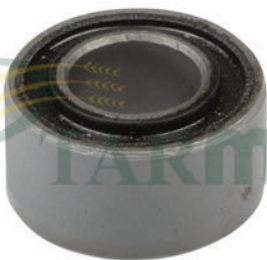
DOM 108-118-MED 340

662808.0
CONCAVE
(GRAIN)

KL-5390

DOM 108-118-MED 340

662811.0
CONCAVE
(CORN)

KL-0540

ALL MODELS

647464.0
MEGU BUSHING
(16x32x17mm)

KL-0541

ALL MODELS

647465.0
MEGU BUSHING
(18x34x42mm)

KL-0542

ALL MODELS

647467.0
MEGU BUSHING
(25x40x40mm)

**KL-0543**

ALL MODELS

647429.0
MEGU BUSHING
(25x50x50mm)

KL-0544

ALL MODELS

647431.0
MEGU BUSHING
(36x70x90mm)

KL-0545

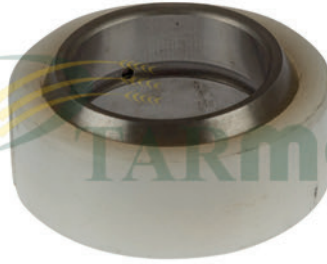
LEX

687355.0
MEGU BUSHING
(55x25x60mm)

KL-0546

ALL MODELS

647430.0
MEGU BUSHING
(70x36x65mm)

KL-0547

DOM-MEGA-MEDION-LEX

647466.0
MEGU BUSHING
(14x35x32mm)

KL-0548

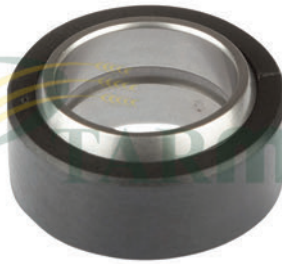
LEX

751251.0
MEGU BUSHING
(18x40x25mm)

KL-0549

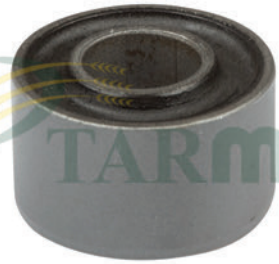
LEX

751252.0
MEGU BUSHING
(18x40x50mm)

KL-0550

DOM-MEGA-MEDION-LEX

647468.0
MEGU BUSHING
(20x45x30mm)

KL-0551

LEX

751254.0
MEGU BUSHING
(20x60x50mm)

KL-0552

LEX

751335.0
MEGU BUSHING
(21x41x50mm)

KL-0553

LEX

751253.0
MEGU BUSHING
(25x50x56mm)

KL-0554

DOM-MEGA-MEDION-JAG

072744.0
MEGU BUSHING
(30x65x70/40mm)

**KL-0555**

DOM-MEGA-LEX

657940.0
MEGU BUSHING
(30x65x70/60mm)

KL-0557

DOM

605244.1
MEGU BUSHING

KL-0560

DOM-MEDION

673081.1
SWING

KL-0561

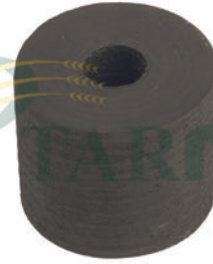
DOM-MEDION-TUCANO

678638.0
ROCK SHAFT
(SET)

KL-0562

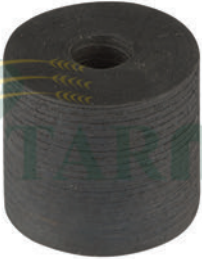
DOM

619342.0
RUBBER BUSHING

KL-0563

DOM-LEX-MEGA

619342.1
RUBBER BUSHING
(44x13x33,5mm)

KL-0564

DOM-LEX-MEDION-MEGA

619342.0
RUBBER BUSHING
(44x13x35mm)

KL-0565

DOM-LEX-MEDION-MEGA

619298.3
CONVEYOR PLATE

KL-0566

DOM-MEGA

672630.2
CONVEYOR PLATE

KL-0567

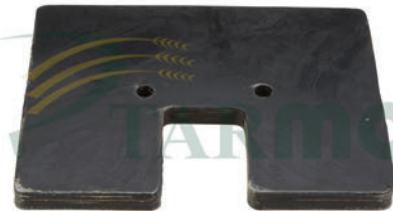
DOM-MEDION-MEGA

605450.1
CONVEYOR PLATE

KL-0568

YENİ MODELERE

642644.2
CONVEYOR PLATE

KL-0569

LEX

735935.2
CONVEYOR PLATE

**KL-5690**

ALL MODELS

**AUGER FINGER RUBBER
(16mm)**

KL-5691

DOM

**726378.0
SWING**

KL-5692

DOM-LEX-MEDION-MEGA

**678637.0
ROCKER ARM**

KL-0570

ALL MODELS

**628601.0
SLIDING BUSHING
(PLASTIC)**

KL-0571

ALL MODELS

**617323.0
SLIDING BUSHING
(PLASTIC)**

KL-0572

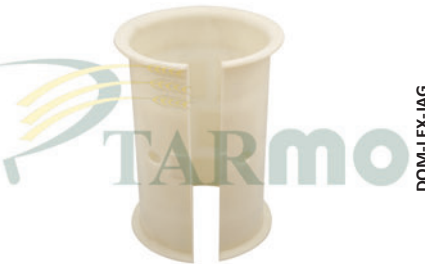
DOM-LEX

**629854.0
SLIDING BUSHING
(PLASTIC)**

KL-0573

DOM-MEGA-LEX

**629865.0
SLIDING BUSHING
(PLASTIC)**

KL-0574

DOM-LEX-JAG

**629841.0
SLIDING BUSHING
(PLASTIC)**

KL-0575

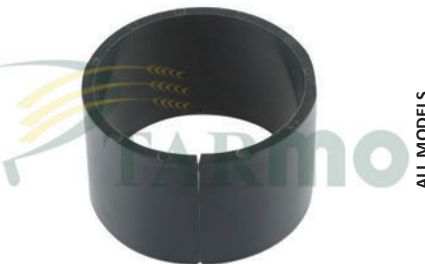
DOM-LEX-MEGA

**630149.0
SLIDING BUSHING
(PLASTIC)**

KL-0576

DOM-MEGA-LEX

**628602.0
SLIDING BUSHING
(PLASTIC)**

KL-0577

ALL MODELS

**603271.0
BEARING BUSH
(62x58x40mm)**

KL-0578

DOM-MEGA

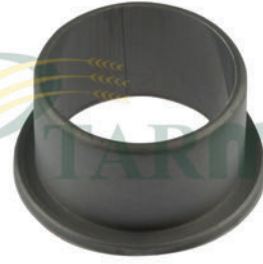
**670277.0
BUSHING
(PLASTIC)**

**KL-0579**

DOM-MEGA

670278.0
BUSHING
(PLASTIC)**KL-0580**

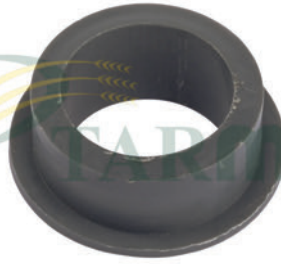
DOM-MEGA

670279.0
BUSHING
(PLASTIC)**KL-0581**

ALL MODELS

008550.0
BUSHING**KL-0582**

YENİ MODELLER

626510.0
BUSHING**KL-0583**

ALL MODELS

677876.0
BUSHING**KL-0584**

LEX

630354.0
FILLING PIECE
(95x110x80mm) - (PLASTIC)**KL-0585**

DOM 68-78-88

603612.2
GLIDE RAIL
(60x7x730mm) - (PLASTIC)**KL-0586**

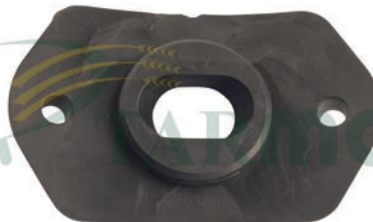
DOM 68-78-88

650686.0
GLIDE RAIL
(60x7x670mm) - (PLASTIC)**KL-0587**

DOM 68-88-118-MED

630570.0
GLIDE RAIL
(52x8x444mm) - (PLASTIC)**KL-0588**

ALL MODELS

603754.2-777199.0
AUGER FINGER GUIDE
(ORIGINAL TYPE)**KL-0589**

ALL MODELS

603754.2-777199.0
AUGER FINGER GUIDE
(REINFORCED)**KL-0590**

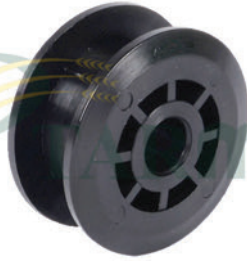
ALL MODELS

008543.0
BUSHING
(Ø 25mm)

**KL-0591**

ALL MODELS

008553.0
BUSHING
(Ø 30mm)

KL-0592

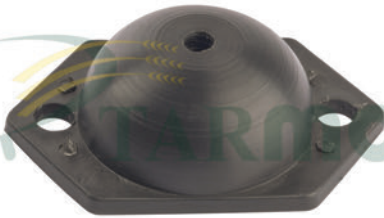
ALL MODELS

609935.1
TENSION ROLL

KL-0593

ALL MODELS

726981.0
BEARING HOUSING
(Ø 80mm) - (PLASTIC)

KL-0594

DOM 68

603864.0
CAP
(PLASTIC)

KL-0595

DOM-MEGA-MEDION-JAG

624546.1
BUSHING

KL-0596

ALL MODELS

660503.0-749996.0
FIBER GUIDE
(Ø 28mm)

KL-0599

DOM

653906.0
STOPPER
(PLASTIC)

KL-0600

ALL MODELS

628893.0
SPRING GUIDE
(PLASTIC)

KL-0601

LEX

519985.1
FINGER GUIDE

KL-0602

DOM-MEGA-MEDION

629265.0
GUIDE CLAMP
(20mm)

KL-0603

COMMANDER-DOM-JAG

628676.0
GLIDING SHOE

KL-0604

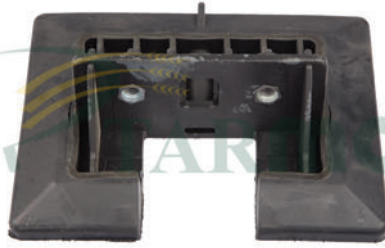
DOM-JAG-LEX-COM

603016.0
GLIDING SHOE

**KL-0605**

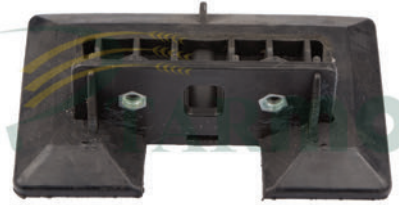
DOM-JAG-LEX-COM

603309.0
GLIDING SHOE

KL-0606

LEX-MEGA-TUCANO

757219.1
CONVEYOR PLATE

KL-0607

MEDION-MEGA-TUCANO

553462.0
CONVEYOR PLATE

KL-0608

DOM-LEX-JAG-MEGA-MED

630427.0
INSPECTION HOLE COVER

KL-0609

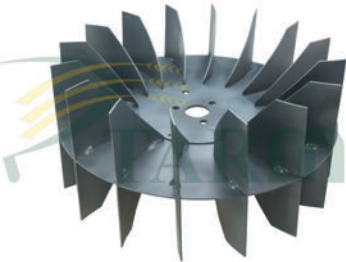
DOM-LEX-MEGA-MED-TUCANO

734784.0
RING
(Ø 80mm) - (PLASTIC)

KL-6090

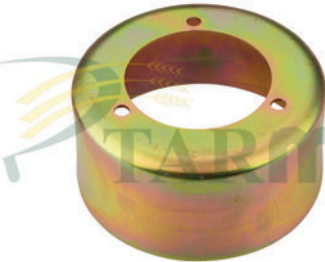
DOM-LEX-MEDION-MEGA

629656.0
PARALLEL KEY
(PLASTIC)

KL-0610

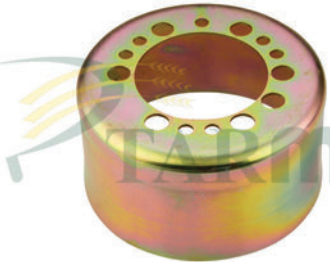
DOM-LEX-MEDION-MEGA

605059.3
FAN ROTOR

KL-0612

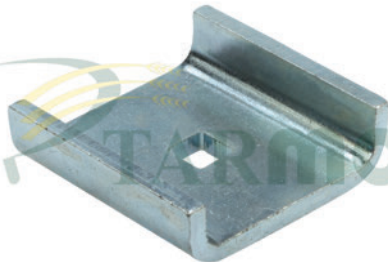
LEX

667412.1
COVER
(Ø 120,50mm) x (60,5mm)

KL-0613

LEX

667531.0
COVER
(Ø 122,50mm) x (66mm)

KL-0614

ALL MODELS

617630.0-663157.0
CAP

KL-0615

ALL MODELS

617631.0
PADDLE

KL-0616

LEX

735596.0
CAP

**KL-0617**

LEX

792229.1
WEAR CAP**KL-0618**

DOM 68-MEDION

683513.1
HYDRAULIC PUMP PLATE**KL-0619**

ALL MODELS

673753.1
SHIM**KL-0620**

DOM-MEGA

672631.1
SHIM PLATE**KL-0621**

DOM-MEGA-MEDION

605449.1
SHIM PLATE**KL-0622**

DOM-MEGA-MEDION

676770.0
SHIM PLATE**KL-0623**

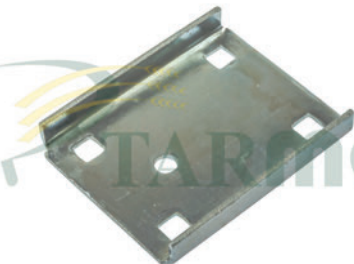
DOM-MEGA-MEDION

636208.2
SHIM PLATE**KL-0624**

LEX

642658.1
SHIM PLATE**KL-0625**

DOM-LEX-MEDION-MEGA

726980.1
BEARING FLANGE**KL-0626**

ALL MODELS

618139.1
SHIM PLATE**KL-0627**

DOM-MEGA-MEDION

670949.2
INTERMED. PLATE**KL-0628**

ALL MODELS

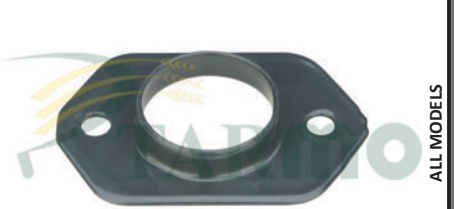
648868.0
TINE

**KL-0629**

610272.3-610294.3
CROP LIFTER

KL-6290

626511.0
STRIP

KL-6291

677883.0
STRAP

KL-6292

233131.0
WASHER

KL-6295

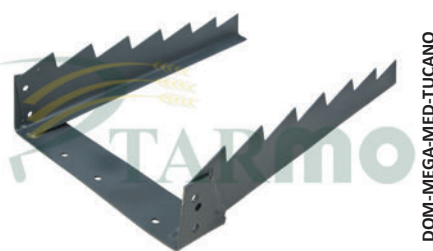
650900.0
SENSING BAND

KL-6296

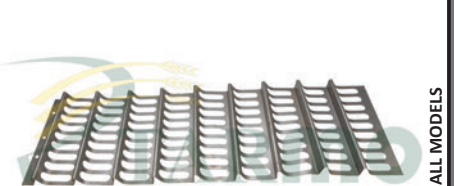
661712.1
SPRING RETAINER

KL-6297

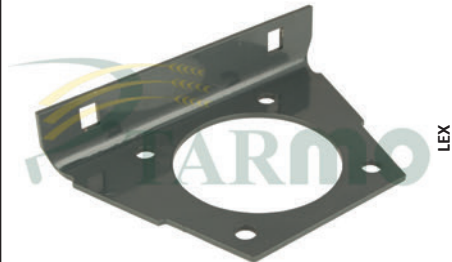
669923.0
BACKUP WASHER

KL-6298

176951.0
FISHBACK

KL-6299

670936.3-673913.2
STRAW WALKER COVER - (684996.2)

KL-6300

792704.0
BEARING FLANGE
(3x128x155mm)

KL-6301

629047.2
TAPERED RING
(Ø 45x13mm)

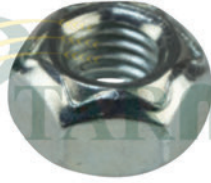
KL-0630

602116.1-239367.0
WHEEL BOLT WITH NUT

**KL-0632**

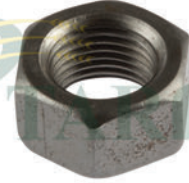
ALL MODELS

237561.0
WOODEN BEARING BOLT

KL-0633

ALL MODELS

237947.0
SECURING NUT
(M10)

KL-0634

ALL MODELS

237519.0
HEXAGONAL NUT
(M16)

KL-0635

LEX

753800.2
PIN

KL-0636

ALL MODELS

235534.1
HEXAGONAL BOLT
(M10x50)

KL-0637

ALL MODELS

236462.0
FLAT HEAD BOLT
(M10x60)

KL-0638

ALL MODELS

236460.0
FLAT HEAD BOLT
(M10x50)

KL-0639

MEDION 340

626407.0-626408.0
KNIFE BOLT WITH NUT
(6x17mm)

KL-0640

MEDION 340

626406.0-626408.0
KNIFE BOLT WITH NUT
(6x28mm)

KL-0641

ALL MODELS

237663.0
RIVET
(6x17mm)

KL-0642

ALL MODELS

237054.0
RIVET
(6x30mm)

KL-0643

ALL MODELS

237663.0
RIVET
(6x17mm) - (1Kg)

**KL-0644**

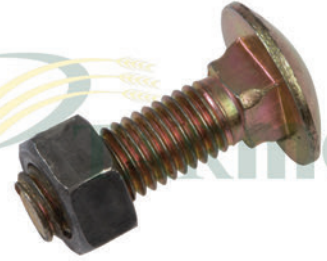
ALL MODELS

237054.0
RIVET
(6x30mm) - (1Kg)

KL-0645

ALL MODELS

211175.0
COUNTERSUNK BOLT
(WITH NUT)

KL-0646

ALL MODELS

237461.0
HEXAGONAL SCREW

KL-0647

ALL MODELS

238904.0
SOCKET HEAD SCREW
(M18x2x45mm)

KL-0648

ALL MODELS

502511.0
COACH BOLT
(M10x25mm)

KL-0649

DOM

670750.2
PIN

KL-0650

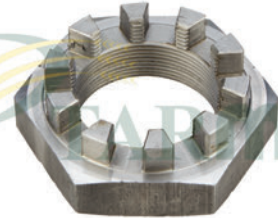
DOM-MEGA-MEDION

649835.0
SWIVEL PIN

KL-0651

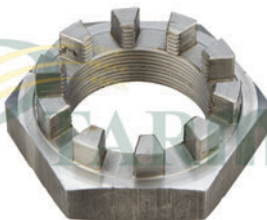
DOM-MEGA

235806.0
SLOTTED NUT

KL-0652

DOM-LEX-MEDION-MEGA

685364.1
CASTELLATED NUT

KL-0653

DOM-LEX-MEGA

211053.1
CASTELLATED NUT

KL-0654

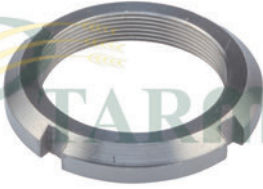
DOM-LEX-MEDION-MEGA

642366.0
SLOTTED NUT

KL-0655

LARGE PLATFORM

669922.0
SLOTTED NUT

**KL-0656**

DOM-MEGA

649943.0
SLOTTED NUT

KL-0660

DOM 68-78-88-98

649266.0
REEL CYLINDER

KL-0661

DOM 68-78-88-98-MEGA

649267.0
REEL CYLINDER

KL-0662

DOM 68-76-86-96-106

672550.3
REEL CYLINDER
RH

KL-0663

DOM 48-68-78-88-98-76

672540.4
REEL CYLINDER
LH

KL-0664

DOM 48-68-78-88-98-JAG

685577.1
STEER CYLINDER

KL-0666

DOM-LEX-MEDION-MEGA

643748.0
CYLINDER HEAD

KL-0667

DOM 88-98-86-96

607035.0
SWING RAM ASSY.

KL-0668

DOM 68-78-88-98-76

602566.1
HYDRAULIC CYLINDER

KL-0669

DOM-JAG

683261.2
CYLINDER HEAD

KL-0672

DOM-MEGA-JAG

656860.1
HYDRAULIC PUMP

KL-0673

MEDION

633995.0
HYDRAULIC PUMP
(BOSCH REXROTH)

**KL-6740**

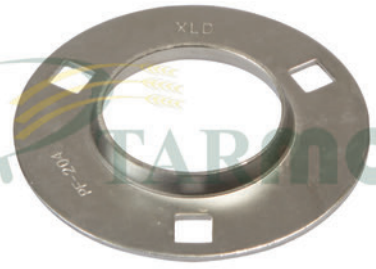
ALL MODELS

055619.0
ACCUMULATOR
(BOSCH REXROTH) - (100 BAR)

KL-6741

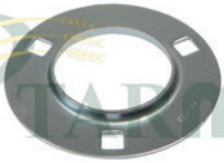
ALL MODELS

CONNECTOR OF ACCUMULATORS

KL-0675

ALL MODELS

619288.0
BEARING HOUSING
(ROUND) - PF204

KL-0676

ALL MODELS

636343.0
BEARING HOUSING
(ROUND) - PF205

KL-0677

ALL MODELS

610446.0-239321.0
BEARING HOUSING
(ROUND) - PF206

KL-0678

ALL MODELS

616068.0
BEARING HOUSING
(ROUND) - PF207

KL-0679

ALL MODELS

560214.0
BEARING HOUSING
(ROUND) - PF208

KL-0680

ALL MODELS

619285.0
BEARING HOUSING INCLUSIVE
BEARING - (INA) - PF204

KL-0681

ALL MODELS

636340.0
BEARING HOUSING INCLUSIVE
BEARING - (INA) - PF205

KL-0682

ALL MODELS

610449.0
BEARING HOUSING INCLUSIVE
BEARING - (INA) - PF206

KL-0683

ALL MODELS

616065.0
BEARING HOUSING INCLUSIVE
BEARING - (INA) - PF207

KL-0684

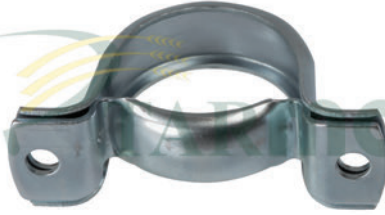
ALL MODELS

560210.0
BEARING HOUSING INCLUSIVE
BEARING - (INA) - PF208

**KL-0685**

ALL MODELS

**BEARING HOUSING INCLUSIVE
BEARING - (INA) - PF209**

KL-0686

ALL MODELS

**216397.0
BEARING HOUSING**

KL-0687

ALL MODELS

**BEARING HOUSING
(ROUND) - PF209**

KL-0690

LEX

**775950.0
BUSHING
(70x64x40mm)**

KL-0691

JAG-MEDION-LEX

**669487.0
BUSHING
(65x60x40mm)**

KL-0692

DOM-MEDION-MEGA-JAG

**655144.1
BEARING BUSHING
(47x45x40mm)**

KL-0693

LEX-JAG

**637714.0
BEARING BUSHING
(65x50x50mm)**

KL-0694

DOM

**819809.3
WEAR RING
(125,5x129,5x12mm)**

KL-0695

DOM-MED-MEGA-JAG

**649431.0
BEARING BUSHING
(55x50x40mm)**

KL-0696

DOM-LEX-MED-MEGA

**683371.0
BUSHING**

KL-0697

LEX-MEGA

**759642.1
BEARING BUSH**

KL-0698

DOM-LEX-MED-MEGA

**678783.2
BUSHING
(35x40x26mm)**

**KL-0706**

ALL MODELS

008515.0
BUSHING**KL-0707**

ALL MODELS

008523.0
BUSHING**KL-0708**

ALL MODELS

008560.0
BUSHING**KL-0720**

LEX

626057.1
ADJUSTING SHAFT
(180mm)**KL-0721**

DOM-MEGA

616200.0
DRIVE SHAFT
(612mm)**KL-0723**

DOM

AUGER CONTROL SHAFT
(Z-16) - (1145mm) - (Ø 30mm)**KL-0724**

DOM

AUGER CONTROL SHAFT
(650mm) - (Ø 30mm)**KL-0725**

DOM

AUGER CONTROL SHAFT
(555mm) - (Ø 30mm)**KL-0726**

DOM

645945.1
AUGER CONTROL SHAFT
(365mm) - (Ø 30mm)**KL-0727**

MEDION

AUGER CONTROL SHAFT
(Z-13) - (1145mm) - (Ø 30mm)**KL-0728**

MEDION

626710.0
AUGER CONTROL SHAFT
(72mm) - (Ø 30mm)**KL-0729**

MEDION

626073.0
AUGER CONTROL LEVER
(Z-13)

**KL-0730**

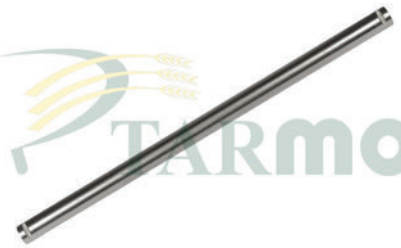
DOM-MEGA

645816.1
AUGER CONTROL LEVER
(Z-16)

KL-0731

DOM

670478.3
AUGER ADJUSTING SHAFT

KL-0732

DOM

604357.0
AUGER ADJUSTING SHAFT

KL-0733

MEGA-MEDION-LEX

753843.1
DRIVE SHAFT

KL-0734

626007.1
DRIVE SHAFT
(263mm) - (Ø 150mm)

KL-0735

AUGER CONTROL SHAFT

KL-0736

MEDION

AUGER CONTROL SHAFT
(560mm)

KL-0737

DOM

676144.0
CONTROL LEVER
RH

KL-0738

DOM

676145.0
CONTROL LEVER
LH

KL-0739

ALL MODELS

626074.3
CONTROL SHAFT
(1280mm - SPLINED)

KL-0740

ALL MODELS

626050.1
CONTROL SHAFT
(1090mm - SPLINED)

KL-0741

LEX-TUCANO

519159.0
CONTROL SHAFT
(821mm)

**KL-0742**

DOM-LEX-MEGA

616203.0
CONTROL SHAFT**KL-0743**

LEX-TUCANO

626672.0
CONTROL LEVER
(877mm) - LH**KL-0744**

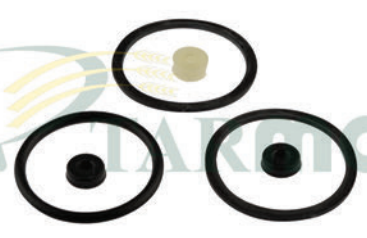
LEX-TUCANO

626674.0
CONTROL SHAFT
(930mm)**KL-0755**

ALL MODELS

672584.1-672589.2
REPAIR KIT
(CONTROL VALVE)**KL-0756**

ALL MODELS

REPAIR KIT
(DANFOSS)**KL-0757**

ALL MODELS

REPAIR KIT**KL-0758**

ALL MODELS

REPAIR KIT
(HYDRAULIC CYLINDER)**KL-0759**

ALL MODELS

REPAIR KIT**KL-0768**

ALL MODELS

215338.0-218236.0
RADIAL SEAL RING**KL-0769**

ALL MODELS

238348.0
SHAFT SEAL RING**KL-0770**

LARGE PLATFORMAR

213307.0
SHAFT SEAL RING**KL-0771**

LARGE PLATFORMAR

237891.0
SHAFT SEAL RING

**KL-0772**

DOM-MEGA-MEDION

215372.0
FELT RING**KL-0810**

ALL MODELS

007615.0
HEADED KEY
(10x8x50mm)**KL-0811**

ALL MODELS

007617.0
HEADED KEY
(10x8x63mm)**KL-0812**

ALL MODELS

238458.0
HEADED KEY
(10x8x90mm)**KL-0813**

ALL MODELS

007614.0
HEADED KEY
(10x8x45mm)**KL-0814**

ALL MODELS

244802.0
HEADED KEY
(10x8x56mm)**KL-0815**

DOM

007618.0
HEADED KEY
(10x8x70mm)**KL-0816**

ALL MODELS

244810.0
HEADED KEY
(14x9x63mm)**KL-0817**

ALL MODELS

007634.0
HEADED KEY
(14x9x75mm)**KL-0818**

MEGA-LEX

007633.0
HEADED KEY
(14x9x56mm)**KL-0819**

ALL MODELS

HEADED KEY
(8x7x30mm)**KL-0821**

ALL MODELS

007605.0
HEADED KEY
(8x7x36mm)

**KL-0822**

ALL MODELS

007612.0
HEADED KEY
(10x8x40mm)

KL-0823

ALL MODELS

244806.0
HEADED KEY
(12x8x45mm)

KL-0824

ALL MODELS

630283.1
HEADED KEY
(12x8x63mm)

KL-0825

DOM

244809.0
HEADED KEY
(12x8x70mm)

KL-0826

LEX

216157.1
HEADED KEY
(16x10x70mm)

KL-0827

LEX

216368.0
HEADED KEY
(8x7x30mm)

KL-0828

ALL MODELS

244799.0
HEADED KEY
(7x8x50mm)

KL-0829

ALL MODELS

216279.0
HEADED KEY
(18x11x90mm)

KL-0830

ALL MODELS

HEADED KEY
(16x16x85mm)

KL-0831

LEX

215272.1
HEADED KEY
(16x10x80mm)

KL-0832

ALL MODELS

244798.0
HEADED KEY
(7x8x45mm)

KL-0833

JAG-LINER

904217.0
PARALLEL
(7x8x45mm)

**KL-0840**

ALL MODELS

629863.0
PARALLEL KEY
(12x14x160mm)

KL-0841

ALL MODELS

239337.0
PARALLEL KEY
(12x8x110mm)

KL-0842

DOM-JAG

629829.0
PARALLEL KEY
(12x14x208mm)

KL-0843

ALL MODELS

670264.0
PARALLEL KEY - (9x10x100mm)

KL-0844

ALL MODELS

670265.0
PARALLEL KEY - (9x10x135mm)

KL-0845

ALL MODELS

670975.0
PARALLEL KEY - (14x9x50mm)

KL-0846

DOM-MEGA-MEDION

624054.0
PARALLEL KEY
(13x9x65mm)

KL-0847

DOM-MEGA-MEDION

238212.0
PARALLEL KEY
(10x8x45mm)

KL-0848

DOM-MEGA

665260.0
PARALLEL KEY
(10x8x30mm)

KL-0849

LEX

215538.0
PARALLEL KEY
(16x10x50mm)

KL-0850

LEX

215815.0
PARALLEL KEY
(16x10x120mm)

KL-0851

LEX

667419.0
PARALLEL KEY
(12x14x221mm)

**KL-0852**

LEX

233099.0
PARALLEL KEY
(14x9x56mm)

KL-0853

LEX

239348.0
PARALLEL KEY
(8x11x40mm)

KL-0854

ALL MODELS

633020.0
PARALLEL KEY
(8x7x30mm)

KL-0855

DOM-MEDION

779054.0
PARALLEL KEY
(10x8x100mm)

KL-0856

DOM-MEGA

712420.0
PARALLEL KEY
(10x8x110mm)

KL-0857

DOM-MEDION-JAG

238391.0
PARALLEL KEY
(10x8x65mm)

KL-0858

DOM-MEGA-MEDION

661213.0
PARALLEL KEY
(12x14x150mm)

KL-0859

ALL MODELS

105235.0
PARALLEL KEY
(12x8x45mm)

KL-0860

DOM-MEGA-MEDION

244785.0
PARALLEL KEY
(14x9x70mm)

KL-0861

ALL MODELS

951003.4
PARALLEL KEY
(6x6x32mm)

KL-0862

DOM-MEGA-MEDION

234900.0
PARALLEL KEY
(8x7x28mm)

KL-0864

ALL MODELS

766546.0
PARALLEL KEY
(8x7x32mm)

**KL-0865**

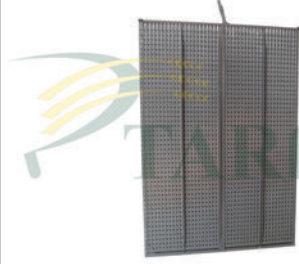
DOM-MEDION-JAG

238210.0
PARALLEL KEY
(8x7x36mm)

KL-0866

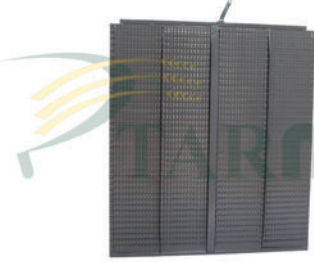
ALL MODELS

244784.0
PARALLEL KEY
(14x9x40mm)

KL-0875

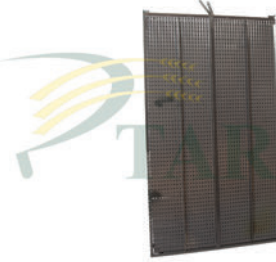
DOM 48-58-68-130-140

725139.1
SIEVE
(UPPER) - (1443x1010mm)

KL-0876

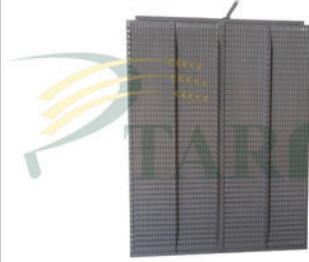
DOM 48-58-68-130-140

725140.1
SIEVE
(BOTTOM) - (1130x1010mm)

KL-0877

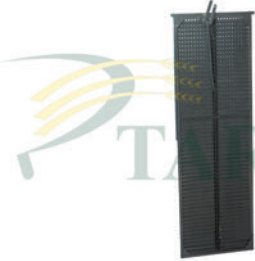
DOM 56-66-76-78-150

600112.1
SIEVE
(UPPER) - (1735x1010mm)

KL-0878

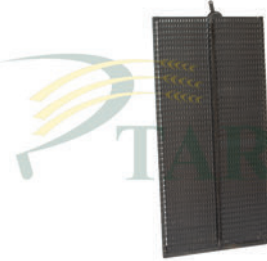
DOM 56-66-76-78-150

600111.4
SIEVE
(BOTTOM) - (1275x1010mm)

KL-0880

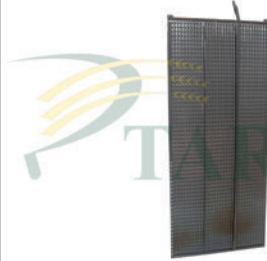
DOM-MEGA-MEDION-COM

647126.1
SIEVE
(UPPER) - (1755x560mm)

KL-0882

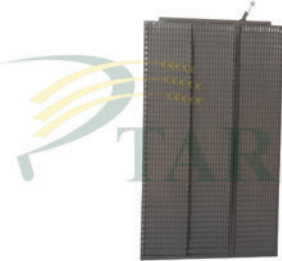
DOM-MEGA-MEDION-COM

646098.2-600114.1
SIEVE
(BOTTOM) - (1275x632mm)

KL-0883

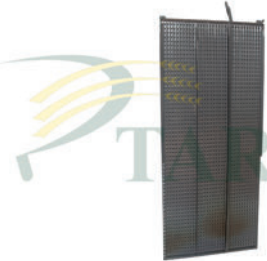
DOM-MEGA-MEDION-COM

600118.1
SIEVE
(UPPER) - (1739x760mm)

KL-0884

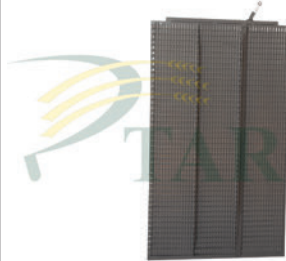
DOM-MEGA-MEDION-COM

600117.4
SIEVE
(BOTTOM) - (1275x760mm)

KL-0885

DOM-MEGA-MEDION-COM

647127.1
SIEVE
(UPPER) - (1755x690mm)

KL-0886

DOM-MEGA-MEDION-COM

600117.4
SIEVE
(BOTTOM) - (1275x760mm)

**KL-0887**

DOM-MEGA-MEDION-COM

647674.1
SIEVE
(UPPER) - (1739x561mm)

KL-0888

TUCANO

553541.1-552583.0
SIEVE
(UPPER) - (1739x555mm)

KL-0889

TUCANO

553540.0-554901.0
SIEVE
(BOTTOM) - (1275x630mm)

KL-0892

LEX

736060.2
SIEVE
(UPPER) - (1739x752mm)

KL-0893

LEX

736061.2
SIEVE
(BOTTOM) - (1275x820mm)

KL-1032

DOM-LEX

147225.0
ENGINE OIL FILTER

KL-1033

DOM-MEGA-LEX-MEDION

602390.0
FUEL FILTER

KL-1034

DOM-MEGA-JAG

824836.0
FILTER ELEMENT

KL-1035

ALL MODELS

766538.0
FILTER ELEMENT

KL-1050

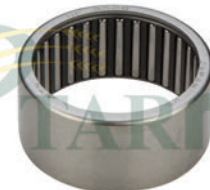
ALL MODELS

215381.0-215382.0
BEARING
(COMPLETE)

KL-1051

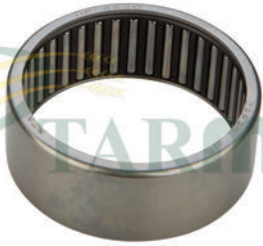
ALL MODELS

234491.0
NEEDLE BEARING

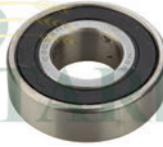
KL-1052

ALL MODELS

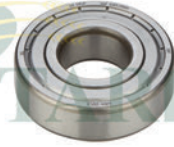
238624.0
NEEDLE SLEEVE

**KL-1053**

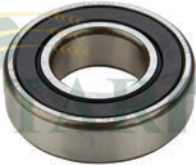
ALL MODELS

215337.0
NEEDLE SLEEVE**KL-1057**

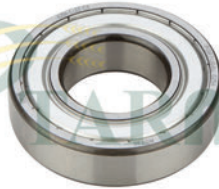
ALL MODELS

239463.0
BEARING
6203 2RS**KL-1058**

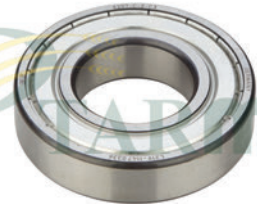
ALL MODELS

236752.0
BEARING
6204 2RS**KL-1059**

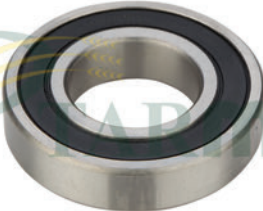
ALL MODELS

215517.0
BEARING
6205 2RS**KL-1060**

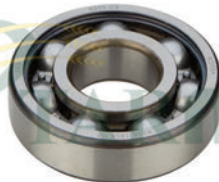
ALL MODELS

235830.0
BEARING
6206 2RS**KL-1061**

ALL MODELS

244267.0
BEARING
6207 2RS**KL-1062**

ALL MODELS

237833.0
BEARING
6208 K2RS C3**KL-1064**

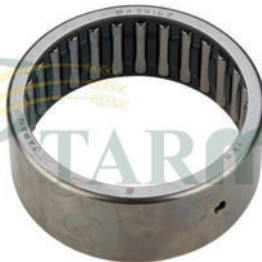
ALL MODELS

215536.0
BEARING
6305 2RS**KL-1080**

ALL MODELS

238640.0
BEARING
32011**KL-1081**

ALL MODELS

212210.0
BEARING
32012**KL-1082**

ALL MODELS

213304.0
BEARING
BA 3416